

# Washington State Broadband Office

## State Broadband Update

Broadband Advisory Workgroup  
City of Bellingham

---

**Russ Elliott**

DIRECTOR, WASHINGTON STATE BROADBAND OFFICE

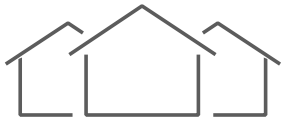
JULY 5, 2021



Washington State  
Department of  
**Commerce**

# We strengthen communities

---



**HOUSING  
HOMELESSNESS**



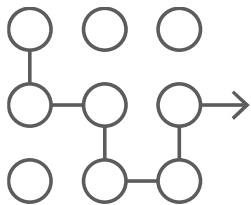
**INFRASTRUCTURE**



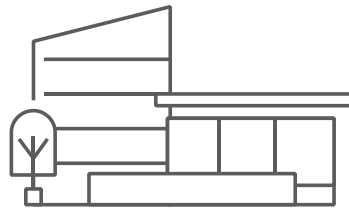
**BUSINESS  
ASSISTANCE**



**ENERGY**



**PLANNING**



**COMMUNITY FACILITIES**

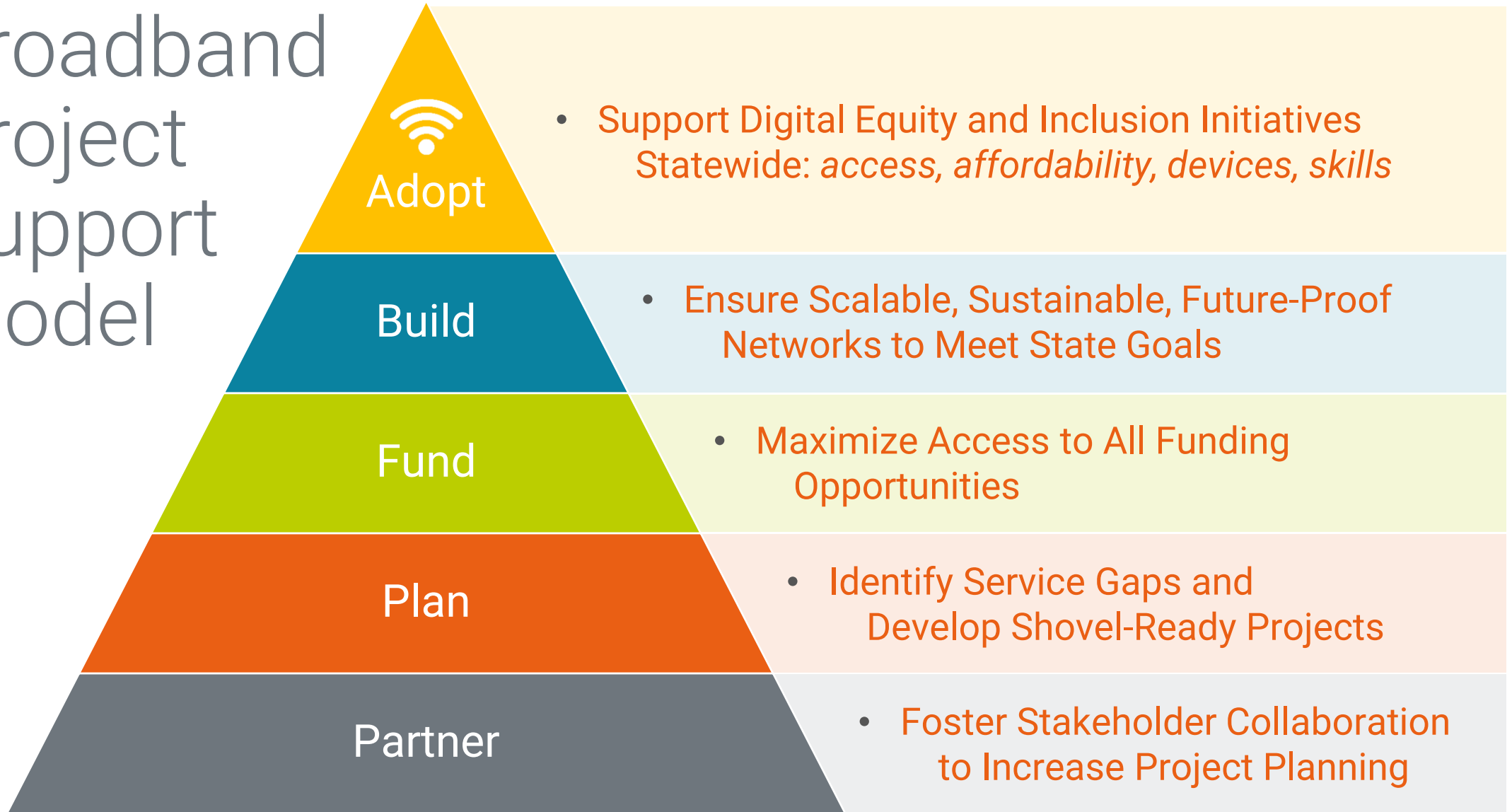


**CRIME VICTIMS &  
PUBLIC SAFETY**



**COMMUNITY  
SERVICES**

# Broadband Project Support Model



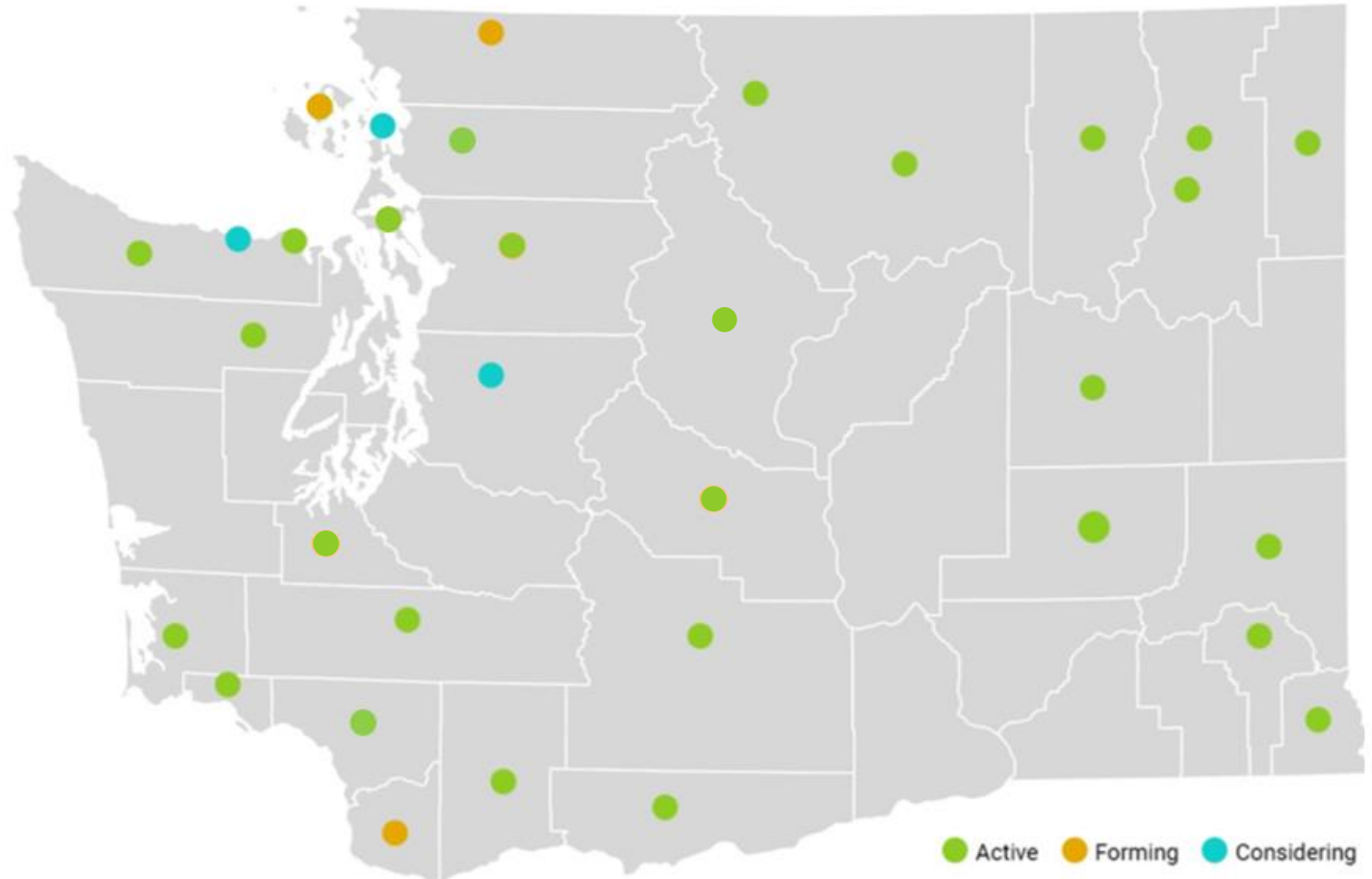


# Partner

Foster Stakeholder Collaboration to Increase Project Planning

## Broadband Action Teams

- Currently 33 Teams
- Promote **participation** in State Broadband Survey
- Identify **public-private** partnerships
- Identify **shovel-ready** projects
- Connect projects to **funding** opportunities





# Plan

Identify Service Gaps and Develop Shovel-Ready Projects

## Broadband State and County Dashboards

### Download

• No Service	5.9%
• 0-10 Mbps	39.8%
• 10-25 Mbps	18.6%
• 25-150 Mbps	29.7%
• 150+ Mbps	6.0%

### Upload

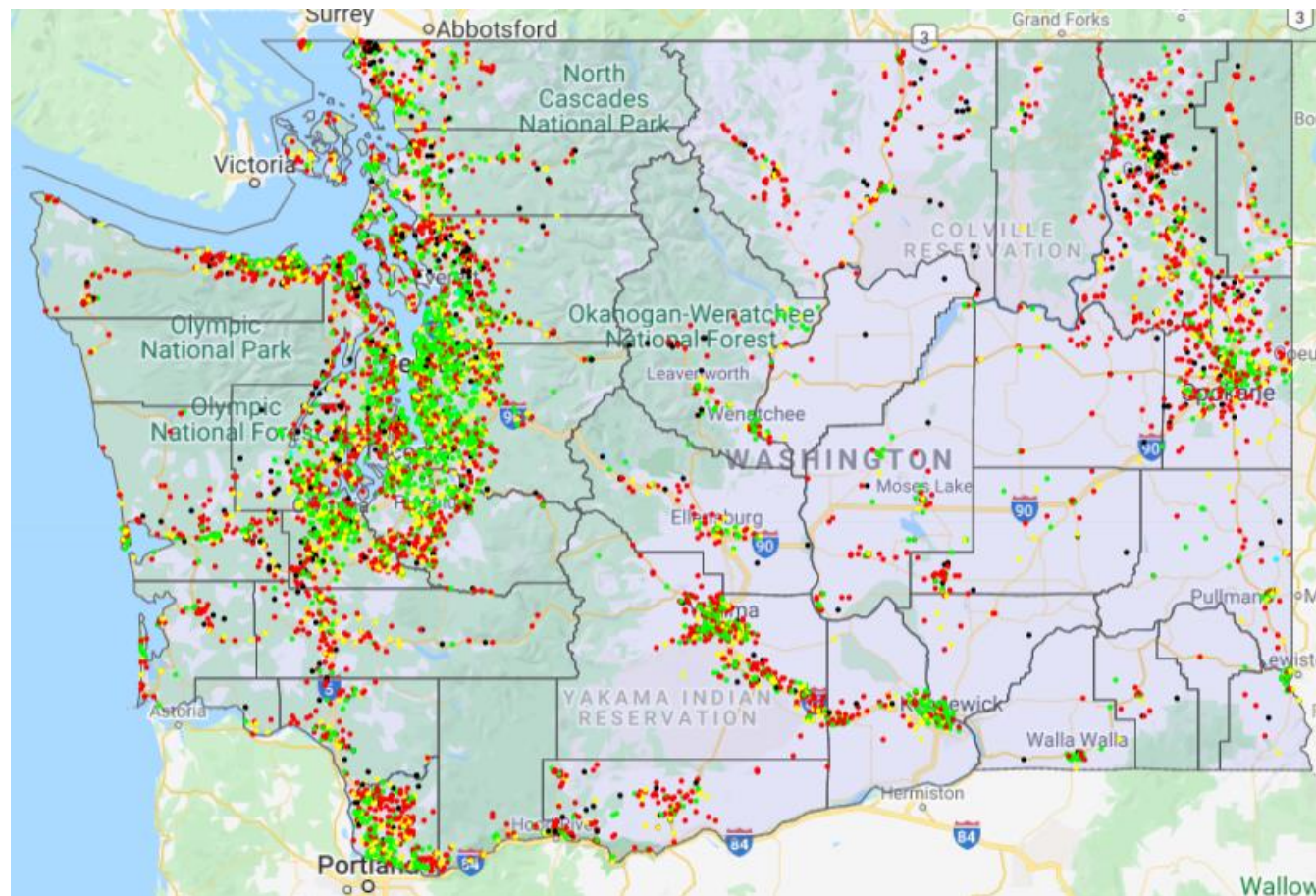
No Service	5.9%
<3 Mbps	42.3%
3-10 Mbps	30.1%
10-25 Mbps	15.7%
25-150 Mbps	5.1%
> 150 Mbps	0.9%

<b>Households</b>	2,885,677
<b>Population</b>	6,724,540
<b>Test locations</b>	38,145
<b>Total Tests</b>	49,719

### Reasons for No Service

*Respondents can select all that apply*

Too Expensive	17.17%
Not Available	91.02%
Use Public	0.16%
No Computer	1.64%
Don't Know How Internet	1.56%
Don't Know How Computer	0.47%
Don't Need	0.23%
Privacy	0.16%
Physical Issues	0.08%





# Fund

State Funding FY 21-23

	Coronavirus Capital Projects Account Grant	Coronavirus Fiscal Recovery Account Grant	State Building Construction Account Grant	State Broadband Account (PWAA) Loan
State Broadband Office	\$16M	\$260M	\$50M (Fed. Match)	
Public Works Board	\$46M			\$14M
Community Economic Revitalization Board	\$25M			

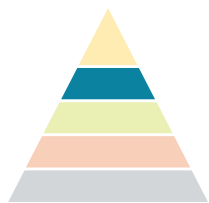


# Fund

Maximize Access to All Funding Opportunities

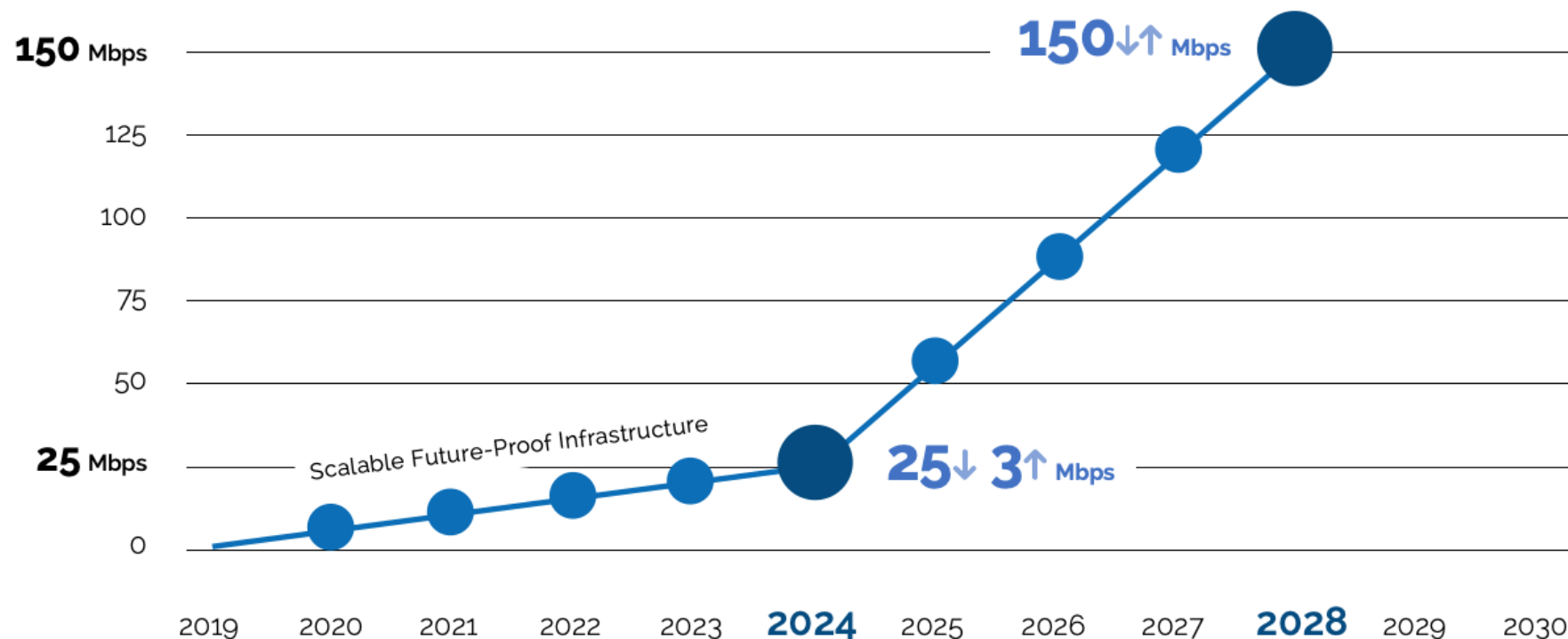
---

- **USDA**
  - **ReConnect \$600M**
  - USDA Community Connect \$35M
  - USDA Distance Learning and Telemedicine Grants \$43M
  - USDA Rural Broadband Program \$29M
  - USDA Rural Telecommunications Infrastructure Loans \$690M
- **NTIA \$300M** WSBO RFI due 7/7/21
- **NTIA Tribal Broadband \$1B**
- **American Rescue Plan Act (ARPA) WA \$7.1B** (Not broadband specific)
- **FCC**
  - FCC Rural Digital Opportunity Fund \$20B
  - FCC Connected Care \$100M
  - FCC COVID Telehealth \$200M
  - FCC E-Rate \$4B
  - FCC Connect America Fund \$1B
  - FCC Rural Healthcare Program \$571M
  - FCC Lifeline Program \$2B
- **Coronavirus Capital Projects Fund** Proposed \$10B
- **USDOT BUILD Grant \$1B**
- **Institute of Museum and Library Services Library and Tribal Grants**
- **Department of Interior National Tribal Broadband Grant (NTBG) \$1M**
- **Economic Development Administration \$1B**
- **Accessible Affordable Internet for All Act**  
Proposed \$94B, \$6B enhances EBB Program

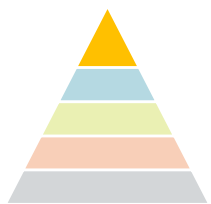


# Build

Ensure Scalable, Sustainable, Future-Proof Networks to Meet State Goals



- 884,000 homes without fiber  
Est. \$2.5+B
- Anchor Institutions 1/1 Gbps by 2026



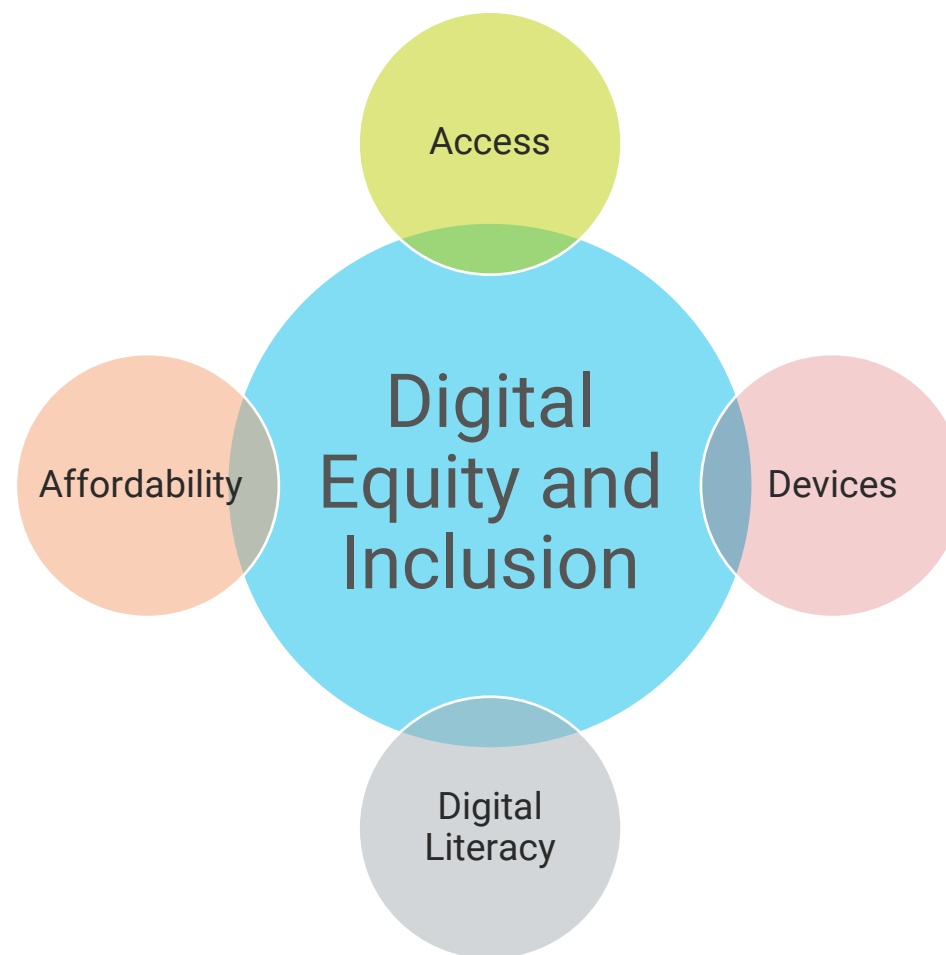
# Adopt

## Support Digital Equity and Inclusion Initiatives Statewide

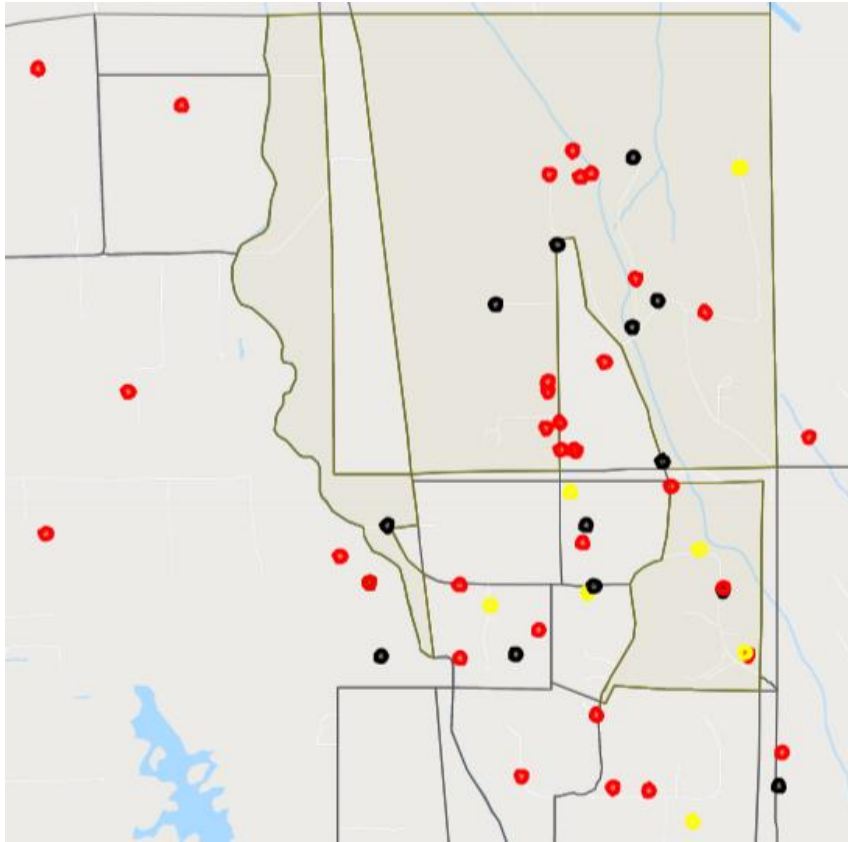
- **Policy guidance and centralized coordination with statewide DEI initiatives**

*Equity in Education Coalition, Human Centered Design Committee, DSHS, DOH, ESD, DCYF, State Board of Community and Technical Colleges, Health Care Authority, Digital Equity Taskforce, Poverty Reduction Work Group, Native Digital Equity Coalition, Remote Learning Taskforce, OSPI, Seattle Digital Equity, All In Washington, Washington State University, Washington State Library | SOS, Digital Navigators*

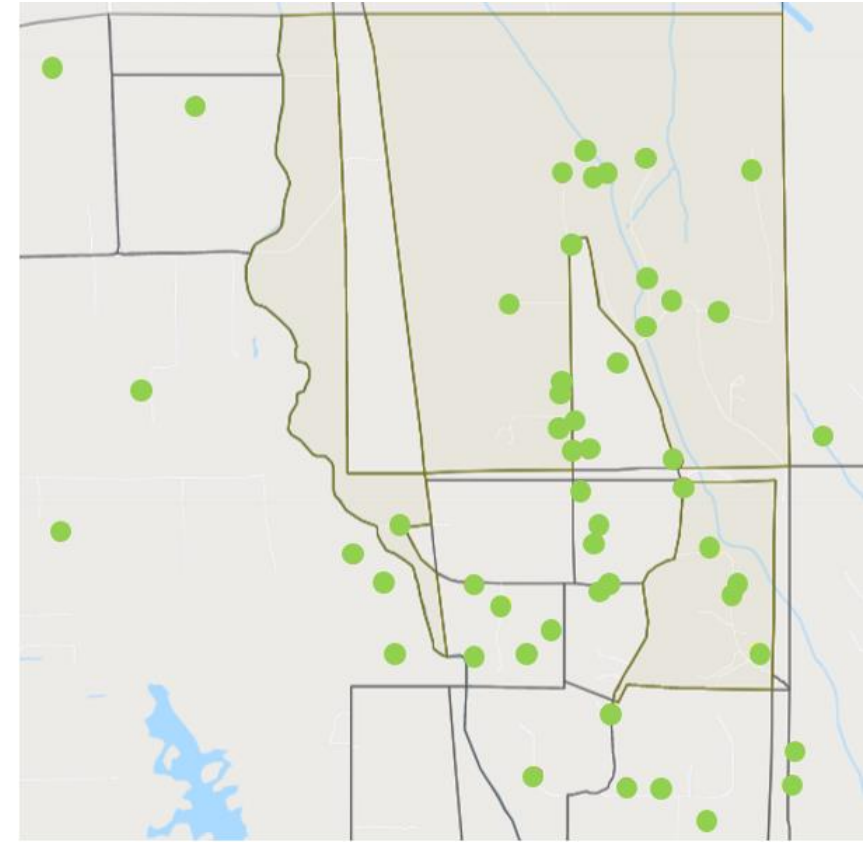
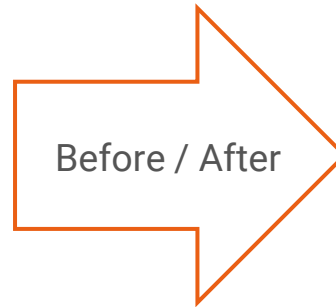
- **\$3.2B 2021 FCC Emergency Broadband Benefit Program (EBBP)**
- **\$7.7B 2021 FCC Emergency Connectivity Fund (ECF)**
- **\$5M for broadband equity and affordability grants**
- **\$7.5M to provide grants to entities that provide digital navigator services, devices, and subscriptions**



# How Do We Measure Success?



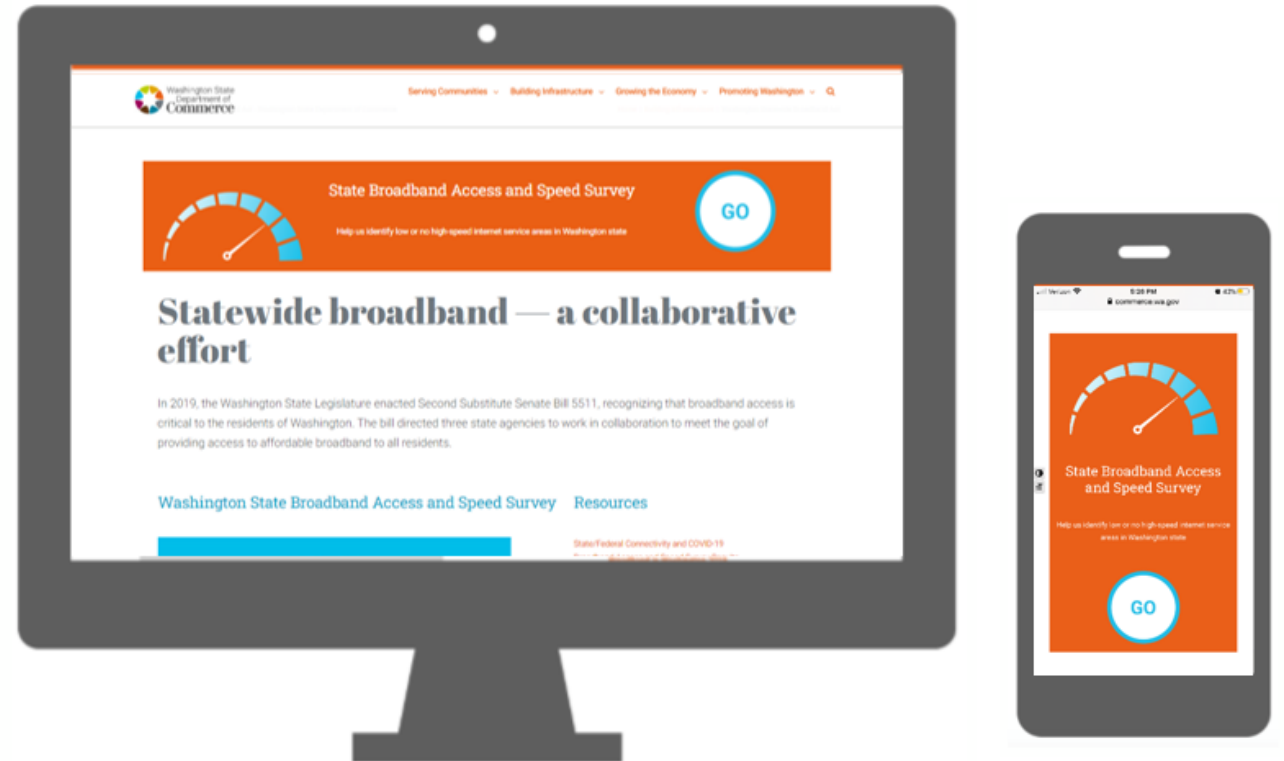
2020: Black - No Service Red < 10 Mbps Yellow < 25 Mbps



2024: Green > 25 Mbps Scalable to 2028: 150/150 Mbps

# Next Steps

- Promote **ongoing** participation in State Broadband Access and Speed Survey at **broadband.wa.gov**
- Identify and develop **shovel-ready projects** for funding applications



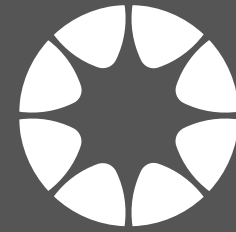
**“What gets  
measured gets  
done!”  
Thank you.**

Russ Elliott

DIRECTOR, WASHINGTON STATE BROADBAND OFFICE

[Russ.Elliott@commerce.wa.gov](mailto:Russ.Elliott@commerce.wa.gov)

564.999.0326



Washington State  
Department of  
**Commerce**

[www.commerce.wa.gov](http://www.commerce.wa.gov)

