

2009-2010 Sewer Replacements - Trenchless



Project Overview: EU-0150

The 2009-2010 Sewer Replacement project consists primarily of replacing manholes and restoring sanitary sewer lines to near new condition through the use of trenchless technology and open cut methods in portions of seven neighborhoods (see map link by neighborhood below.) Eighty-five manholes will be replaced or rehabilitated and more than 18,000 linear feet of pipe will be repaired using trenchless cured-in-place pipe (CIPP). CIPP rehabilitates the existing sewer line by inserting a resin coated cloth liner with pressurized steam. The resin coated liner is then heated with the steam to activate the resin. The hardened resin creates a pipe inside the existing pipe. Additional information about CIPP is available by following this link:

http://www.insituform.com/content/190/how_insituform_cipp_is_installed.aspx

Status - August 2010

Accomplishments: Project is substantially complete. Final inspection held 6/25/10.

Next Milestones: Close out.

Affected Neighborhoods

[Edgemoor \(map\)](#)

[Columbia \(map\)](#)

[Birchwood \(map\)](#)

[York -Sehome \(map\)](#)

[Central Business District \(map\)](#)

[Whatcom Falls \(map\)](#)

Project Manager

Ravyn Whitewolf
Project Engineer
Phone: (360) 778-7900
[Email Public Works](#)

Project Details

- Status - Completed
- Funding Source - Sewer Funds
- Contract Awarded - 12/07/2009

- Contract Amount - \$1,825,780
- Contractor - Tiger Construction
- Completion Date: 7/31/10
- Final contract Amount: \$1,819,408.93 + tax



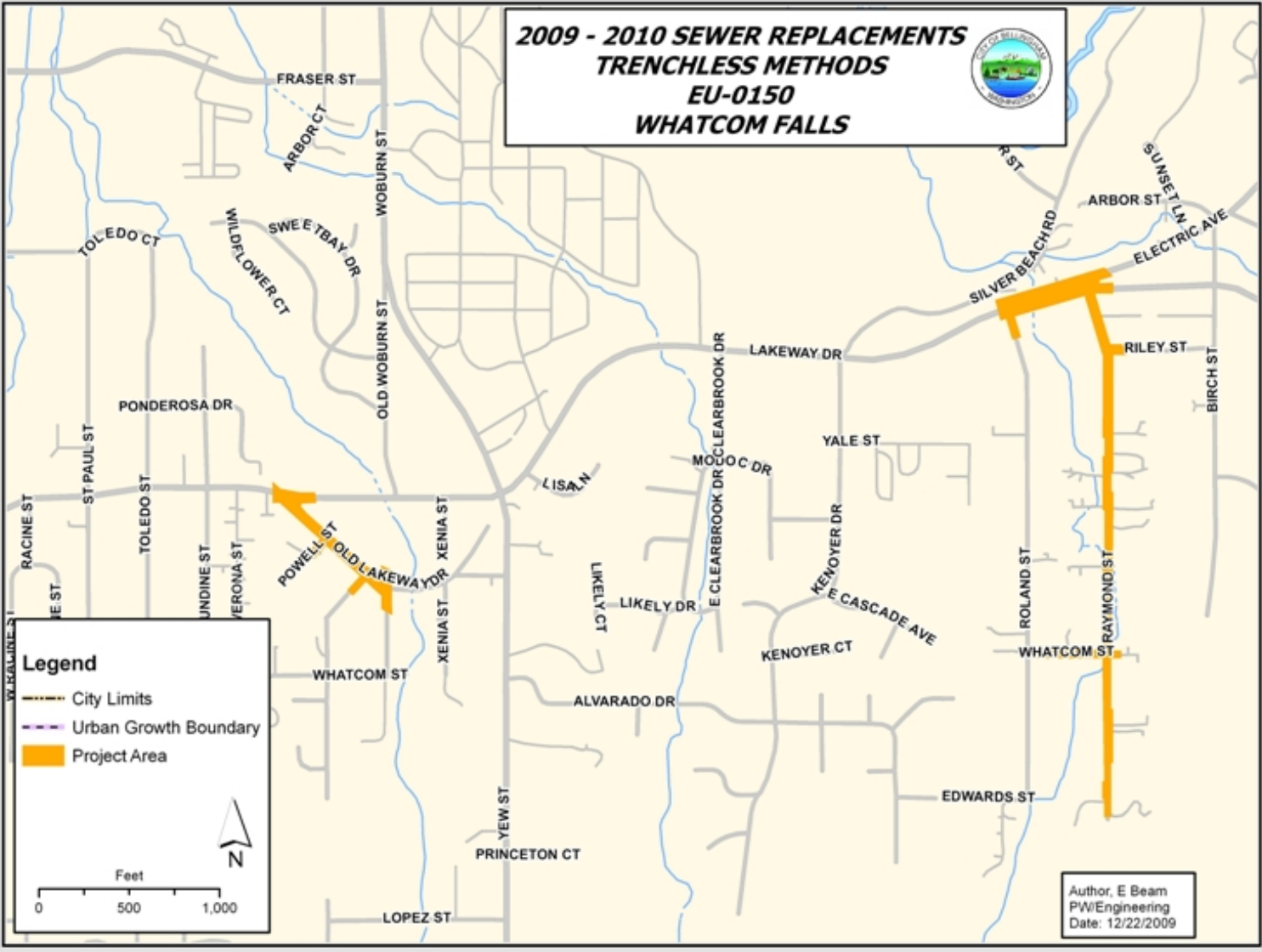


**2009 - 2010 SEWER REPLACEMENTS
TRENCHLESS METHODS
EU-0150
YORK - SEHOME**

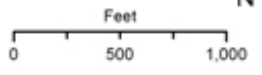


Author: E Beam
PWEngineering
Date: 12/22/2009

**2009 - 2010 SEWER REPLACEMENTS
TRENCHLESS METHODS
EU-0150
WHATCOM FALLS**



- Legend**
- City Limits
 - ... Urban Growth Boundary
 - Project Area



Author, E Beam
PW/Engineering
Date: 12/22/2009

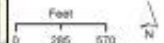
**2009 -2010 SEWER REPLACEMENTS
TRENCHLESS METHODS
EU-0150
EDGEMOOR NEIGHBORHOOD**



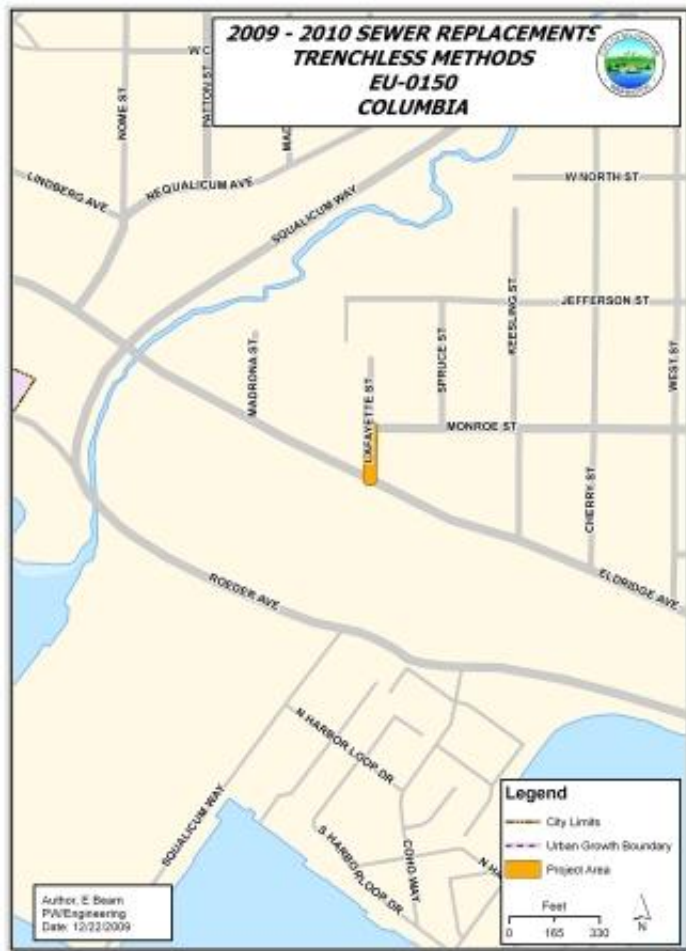
Author, E Beam
PWE Engineering
Date 3/1/2009

Legend

- City Limits
- Urban Growth Boundary
- Project Area



**2009 - 2010 SEWER REPLACEMENTS
TRENCHLESS METHODS
EU-0150
COLUMBIA**



Author: C. Beam
P/E Engineering
Date: 10/22/2009

**2009 - 2010 SEWER REPLACEMENTS
TRENCHLESS METHODS
EU-0150
CENTRAL BUSINESS DISTRICT**



Author: E. Boon
PW/Engineering
Date: 12/22/2009

**2009 - 2010 SEWER REPLACEMENTS
TRENCHLESS METHODS
EU-0150
BIRCHWOOD**

