

2017-2018

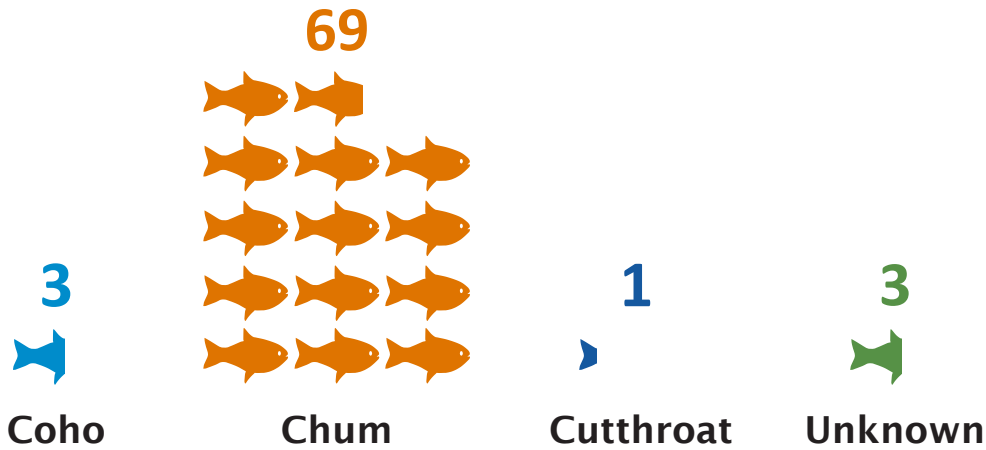


Salmon Spawner Surveys *Squalicum Creek*

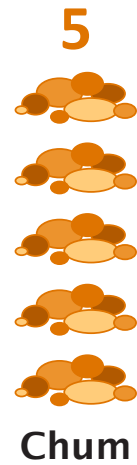
Spawner surveys were conducted weekly between
September 2017 and June 2018

Fish Monitoring Results

Live + dead fish observed

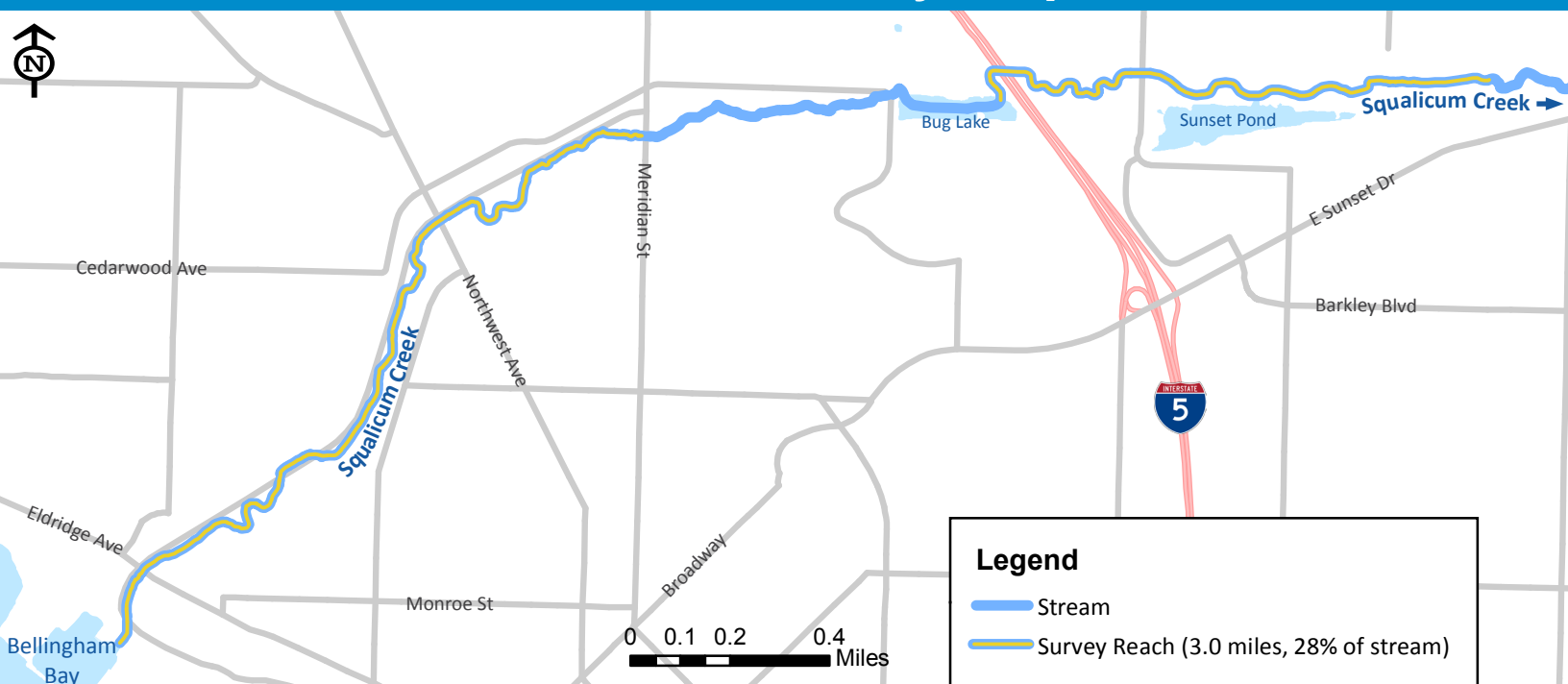


Redds* observed



*Redd: A nest dug in gravel by fish to deposit their eggs

Stream Survey Map



Learn more by visiting our Fish Studies webpage at www.cob.org/habitat