

Resource Recovery at Post Point

Turning our waste into valuable resources



FACT SHEET | Spring 2017

Project Overview

At the City of Bellingham we are in the early stages of planning for future improvements at the Post Point Wastewater Treatment Plant (Post Point). These improvements are needed because the equipment is aging, expensive to repair, and incinerates - rather than recovers - reusable resources. Our goal is to provide sustainable, cost-effective wastewater treatment for the next 20 years and beyond.

Through this project, the City will plan and construct new facilities at Post Point to capture and reuse valuable resources from Bellingham's wastewater consistent with values of the *Legacy Statements and Strategic Commitments* adopted by City Council. Your feedback and input will help inform important decisions throughout planning and design.

What happens at Post Point today?

The Post Point facility has been in operation for nearly 45 years, and includes two essential and related treatment processes or "trains":

Liquid Stream train:

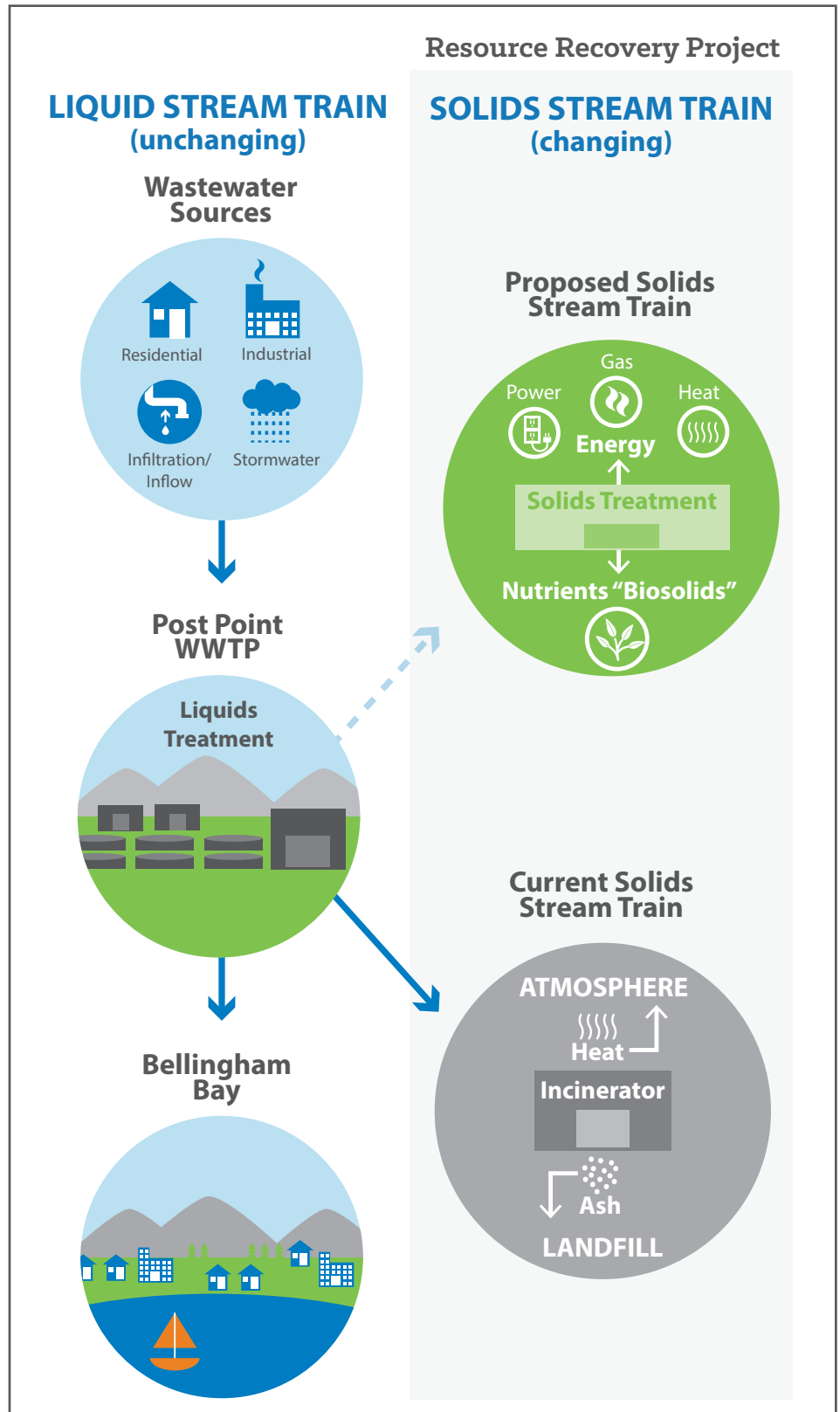
The liquid stream treatment train treats wastewater flowing into Post Point to a level that meets or exceeds National Pollutant Discharge Elimination System (NPDES) Permit limits. Currently, treated effluent (i.e., liquid waste) from Post Point is discharged into Bellingham Bay through an outfall pipe. In 2014, we completed major upgrades to the liquid stream treatment train to improve performance and increase capacity for future years. This project planned for solids stream upgrades, but did not implement them.

Solids Stream train:

The solids stream treatment train treats the solids that are captured or generated through liquid stream treatment. Currently, those solids are incinerated at Post Point using equipment that was installed in the 1970s and is near the end of its useful life. As noted in the City's 2011 Facilities Planning report, this equipment must soon be replaced. Since the solids that are currently incinerated have substantial energy-producing value, and (when appropriately treated) become "biosolids" that can be beneficially used, the City is exploring a range of alternatives to treat and reuse Post Point solids in the future (as shown in the graphic to the right).

Wastewater Treatment Process

The City will be improving the solids stream train as part of the Resource Recovery Project



How will decisions be made?

To identify the preferred solids treatment alternative, the City is using a two-step evaluation process based on our adopted *Legacies and Strategic Commitments*:

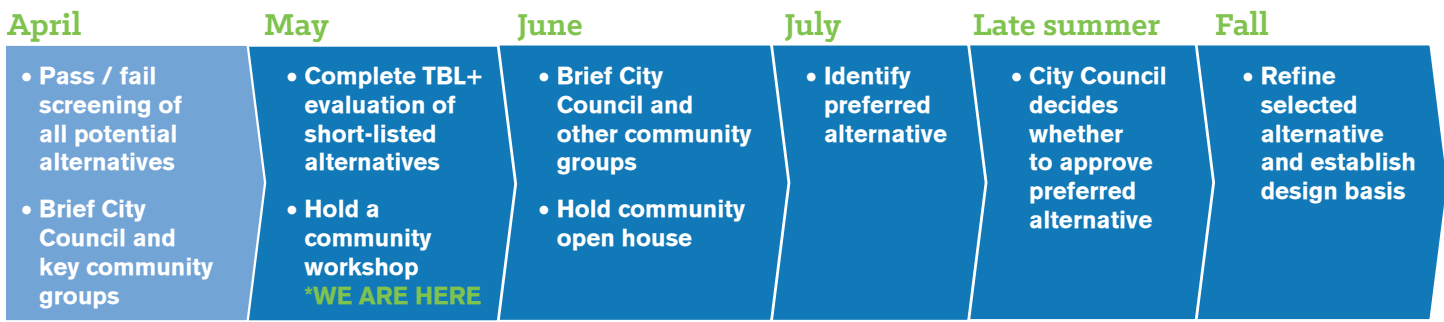
Step 1

Perform an initial screening to identify the most feasible alternatives that will be: safe and reliable to operate; cost-effective; consistent with community values; and capable of achieving the City's resource recovery goals.

Step 2

Further develop, evaluate, and select an alternative using the "Triple Bottom Line Plus" (TBL+) process that considers environmental, social, financial, and technical benefits.

What is the schedule for 2017?



How can I get involved?

We will seek public validation of Step 2 criteria, project options, and potential community amenities. We will keep residents and interested parties informed about our progress, how you can engage in the decision-making process, and results (as they become available).



Contact

Robert Johnson, project manager

rjohnson@cob.org | (360) 778-7735

<https://www.cob.org/services/utilities/pages/waste-water-treatment.aspx>

