

Cordata Neighborhood Park Public Meeting

November 7, 2018



Gina Gobo Austin, PE
Project Engineer

Janice Biletznikoff, AICP
Planning & Development Coordinator

Overview

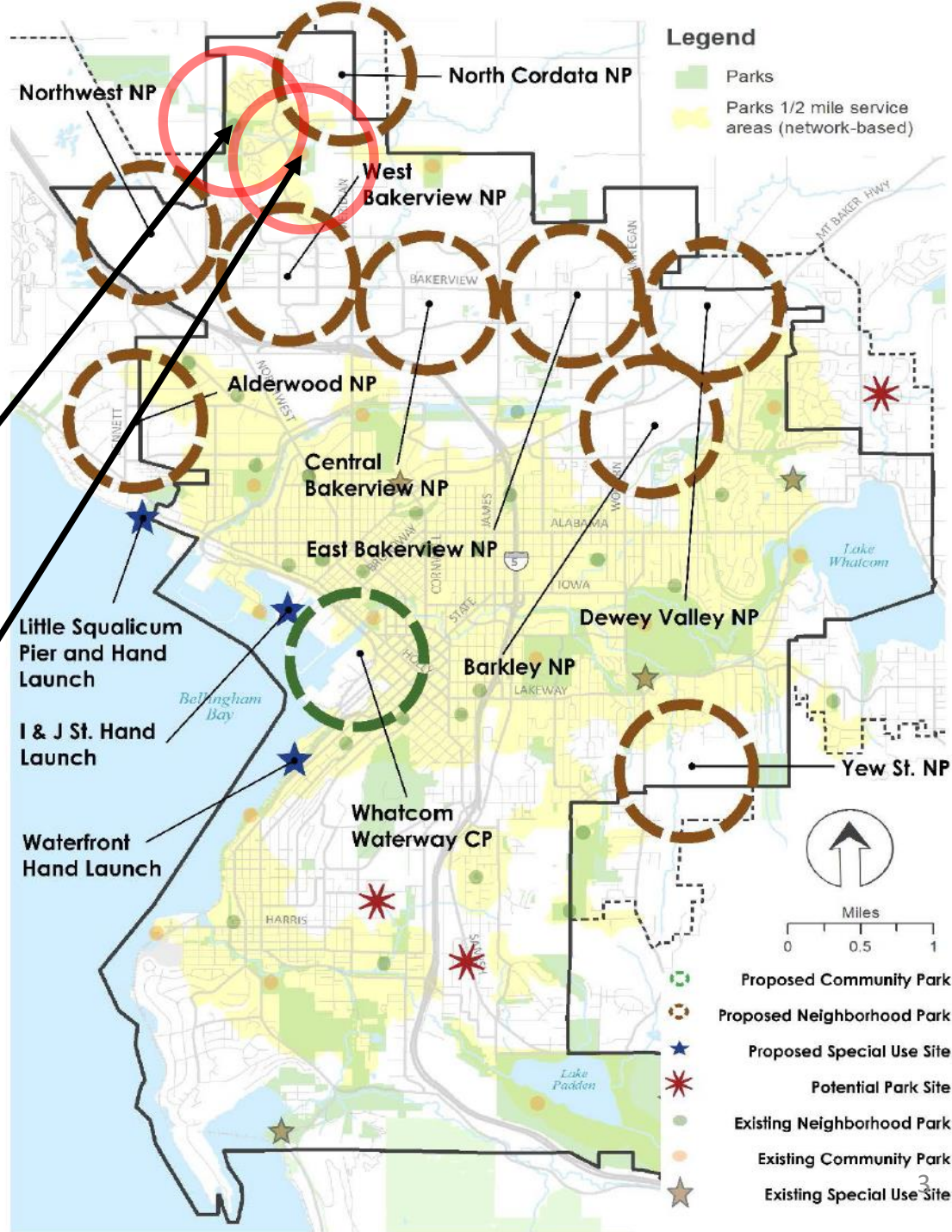
- Background & planning
- Projects completed
- Upcoming projects
- Neighborhood park development
- Next steps



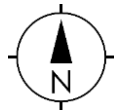
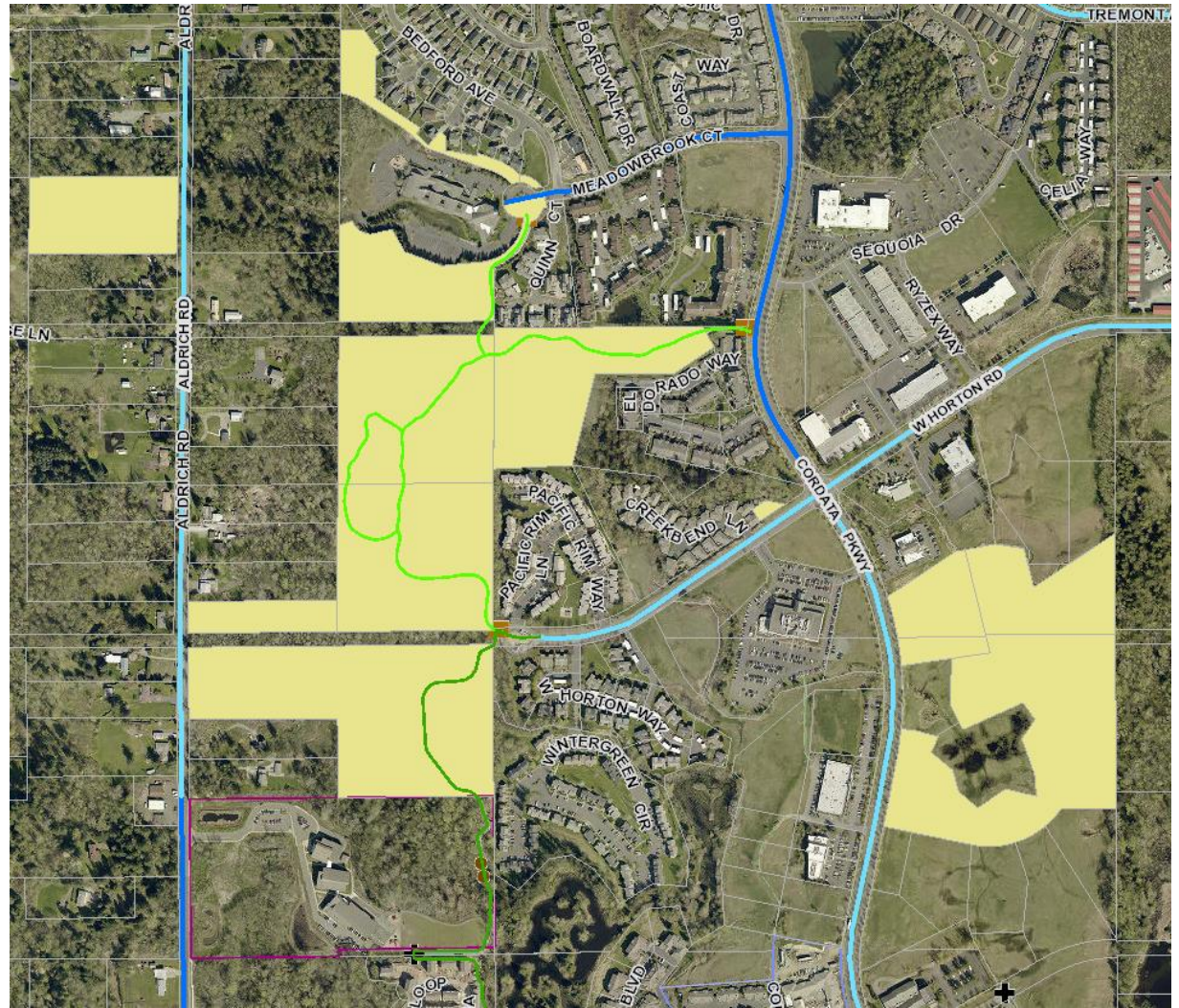
Service
area

Neighborhood
park

Community
park

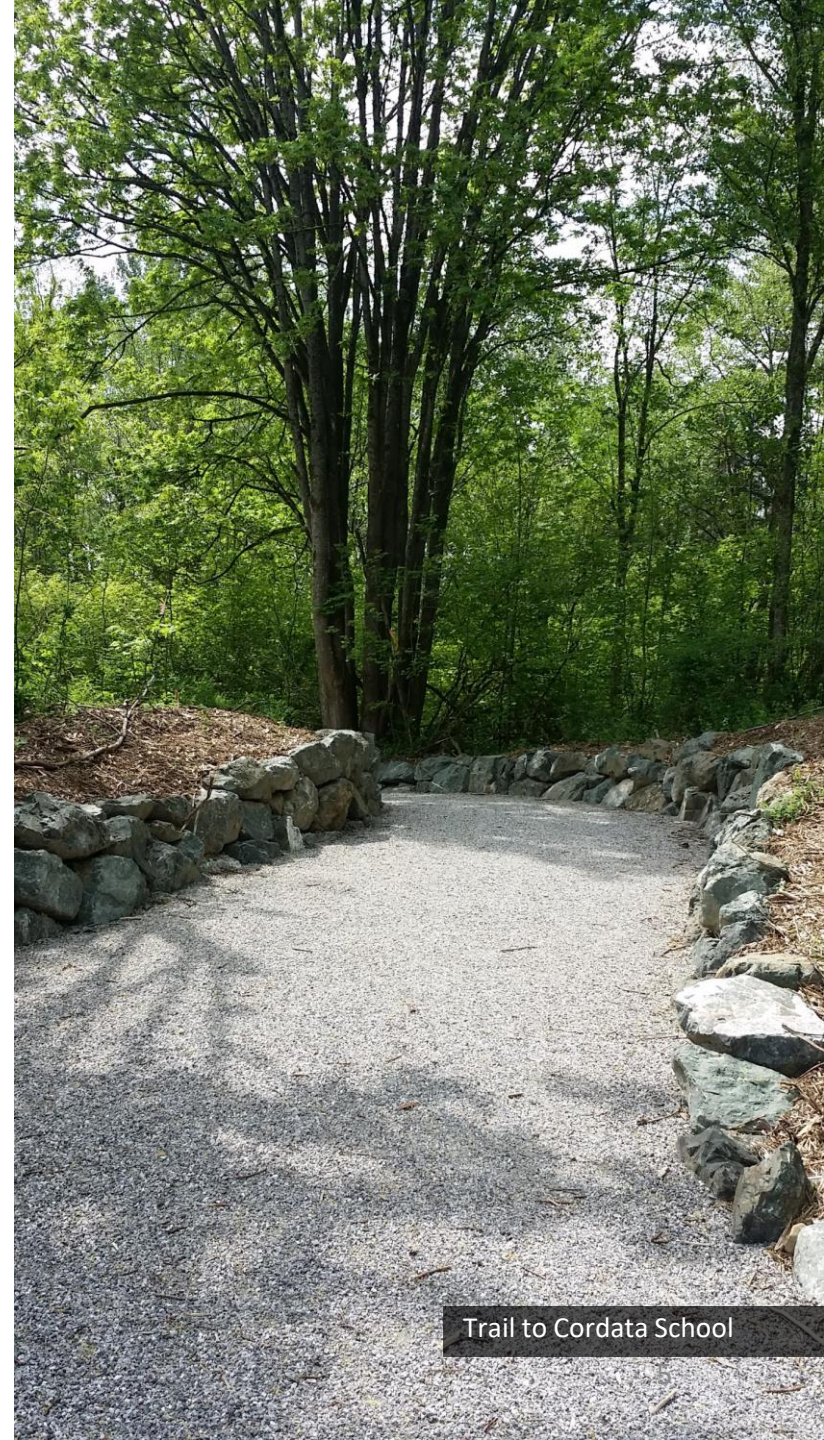


Park vicinity



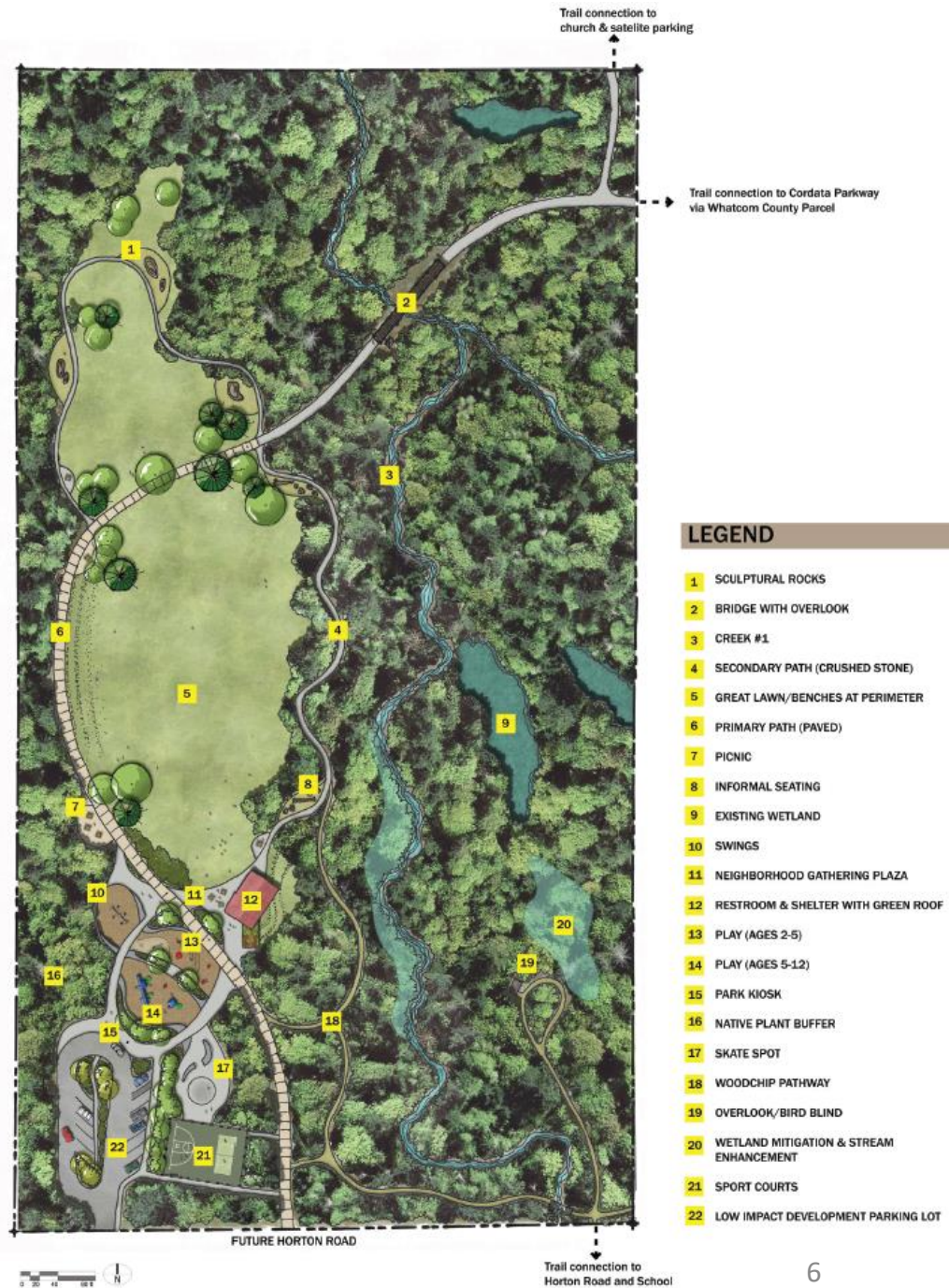
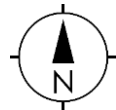
Background

- Cordata **neighborhood** park
 - Purchased in 2008
 - Master planned in 2008
 - Developed 2011-2017
- Cordata **community** park
 - Purchased in 2015
 - Master planned in 2017
 - Construction planned in 2019



Trail to Cordata School

Cordata Neighborhood Park

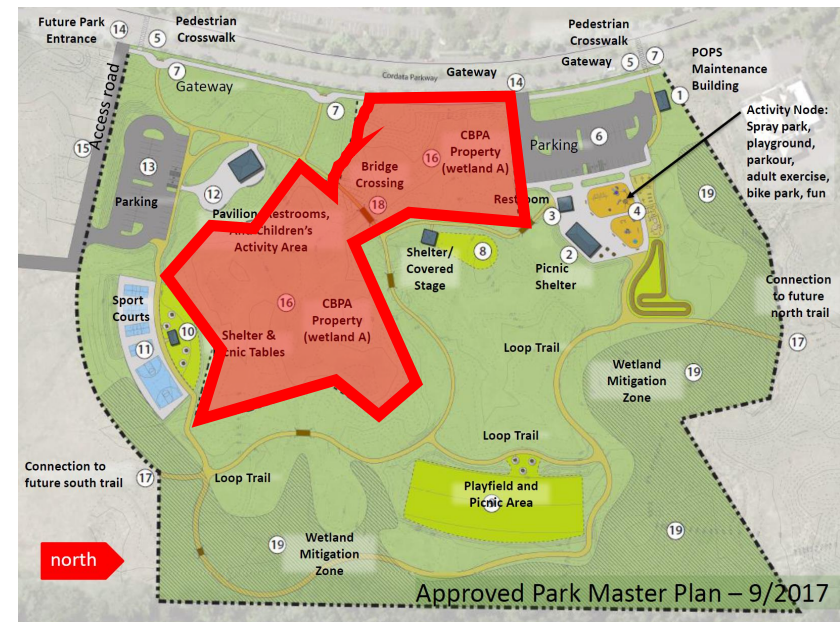


Cordata Community Park



Cordata Community Park

- Vote needed for wetland
- Who can vote:
 - Neighborhood associations
 - Other major land owners
- Critical to development of park
 - No majority vote, park development will be delayed
 - Proxy votes ok
- Meeting packet will be sent out tomorrow
- Meeting
 - December 11 at 3pm
 - WCC Foundation building, upstairs conference room



Projects completed: Cordata Neighborhood Park

- Phase 1 trail from Cordata to Horton Road
- Phase 2 trail to Meadowbrook
- Phase 3 meadow clearing & loop trail
- Phase 4 trail to Cordata School
- Wetland mitigation & planting
- Parking in Horton circle



Trail to Meadowbrook

Projects completed: Cordata Neighborhood Park

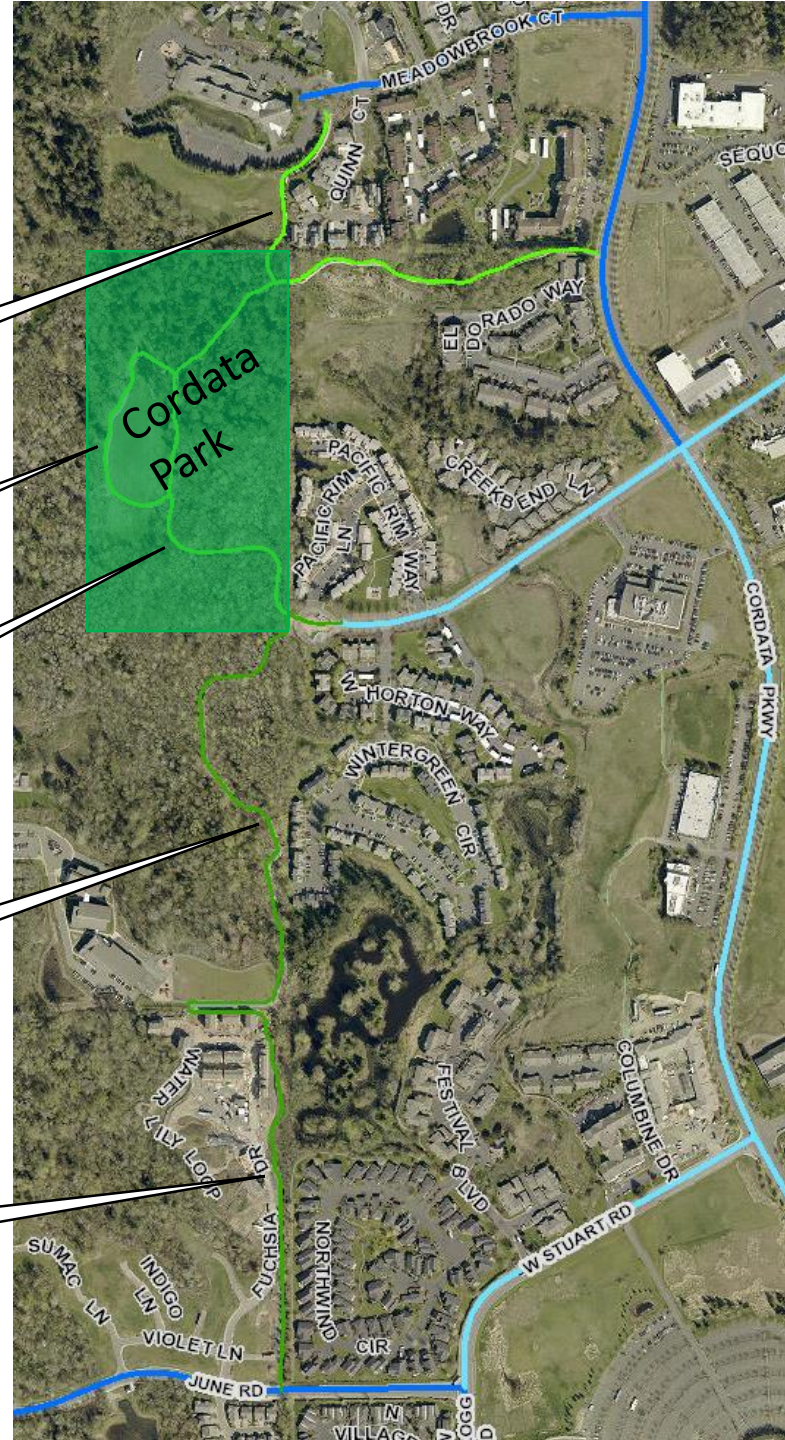
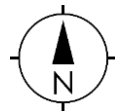
Trail to
Meadowbrook

Meadow &
loop trail

Cordata to
Horton trail

Trail to school

Trail to June
Road





Trail to Cordata School



Trail to Cordata School



Trail from Horton to Cordata Pkwy



Trail from Horton to Cordata Pkwy



Trail from Horton to Cordata Pkwy



Wetland mitigation



Parking in Horton circle



Trail to Meadowbrook Court



Meadow & loop trail



Meadow & loop trail: multipurpose field



Meadow & loop trail



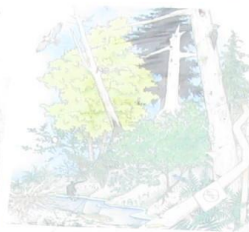
Park benches



Wetland signs & fence

What's in a Forest?

The **canopy** is the forest's ceiling. There are a variety of deciduous and evergreen trees in the canopy, each for a different reason. They are tall and thin, and they have large, flat leaves.



The **understory** is made up of large shrubs and smaller trees. These species can tolerate the shade that the canopy provides. They are often found in the forest's understory.



The **forest floor** is full of leaves, twigs, branches, and other organic matter which is decaying, releasing nutrients, and creating new soil. This creates a healthy habitat for many plants, ferns, small shrubs, and tree seedlings. The forest floor has a variety of ferns, mosses, and trailing blackberry.



The canopy along the trail changes from deciduous to evergreen. Notice how the change creates a difference in the color of the canopy and forest floor. Why do you think they change?



Interpretive signs



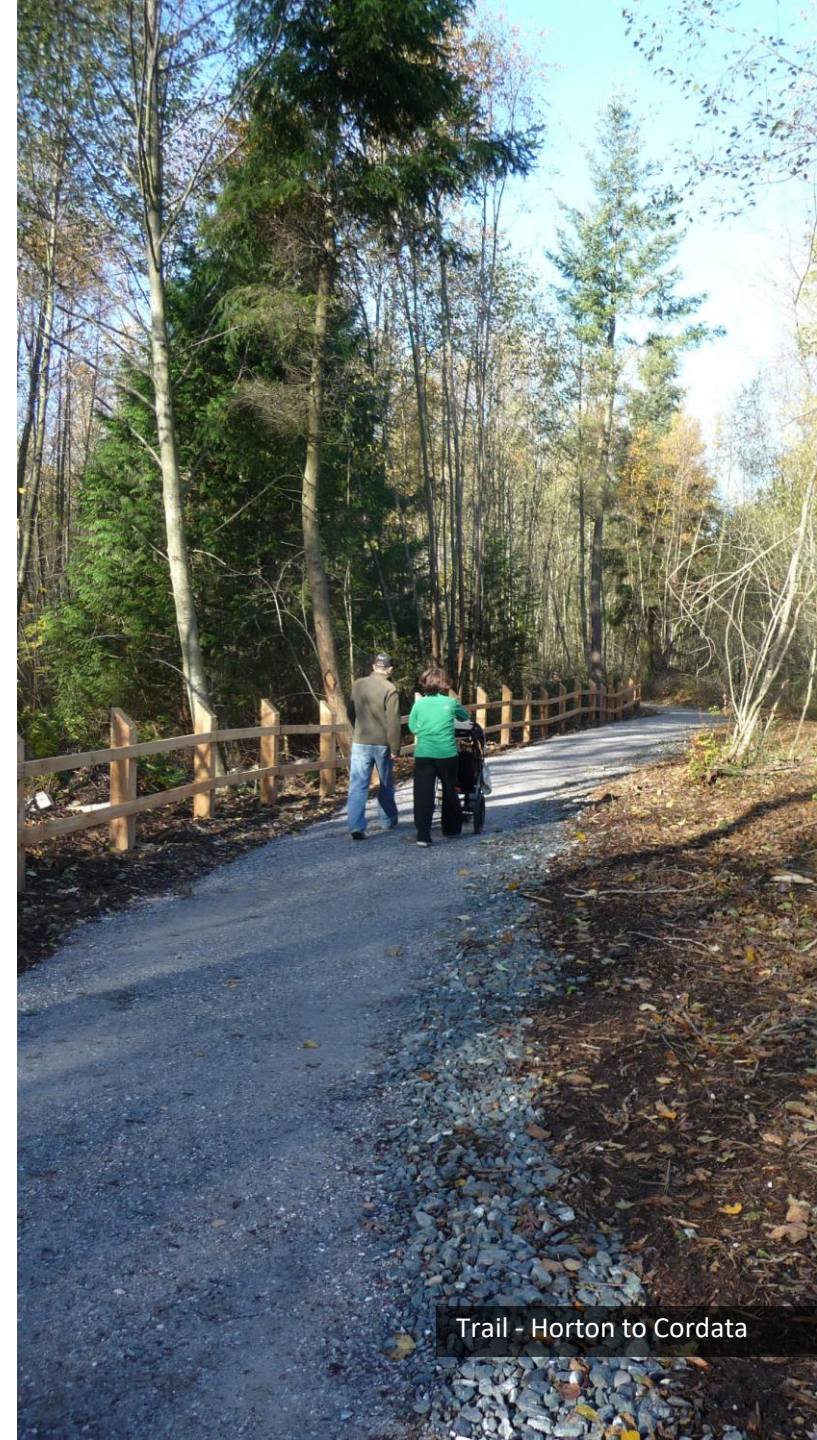
Wayfinding signs



Picnic tables

Upcoming projects

- Stuart/Cordata Roundabout:
 - Complete May 2019
- Horton Road:
 - Design underway
 - Construct summer 2019
- Neighborhood park
 - Complete renaming 2019
 - Parking/site prep/utilities 2019
- Community park
 - Complete naming 2019
 - Develop phase 1 in 2019



Trail - Horton to Cordata

Neighborhood park development

- Critical area impacts
- Mitigation sequencing
- Site development
- Preparation for future development & street construction

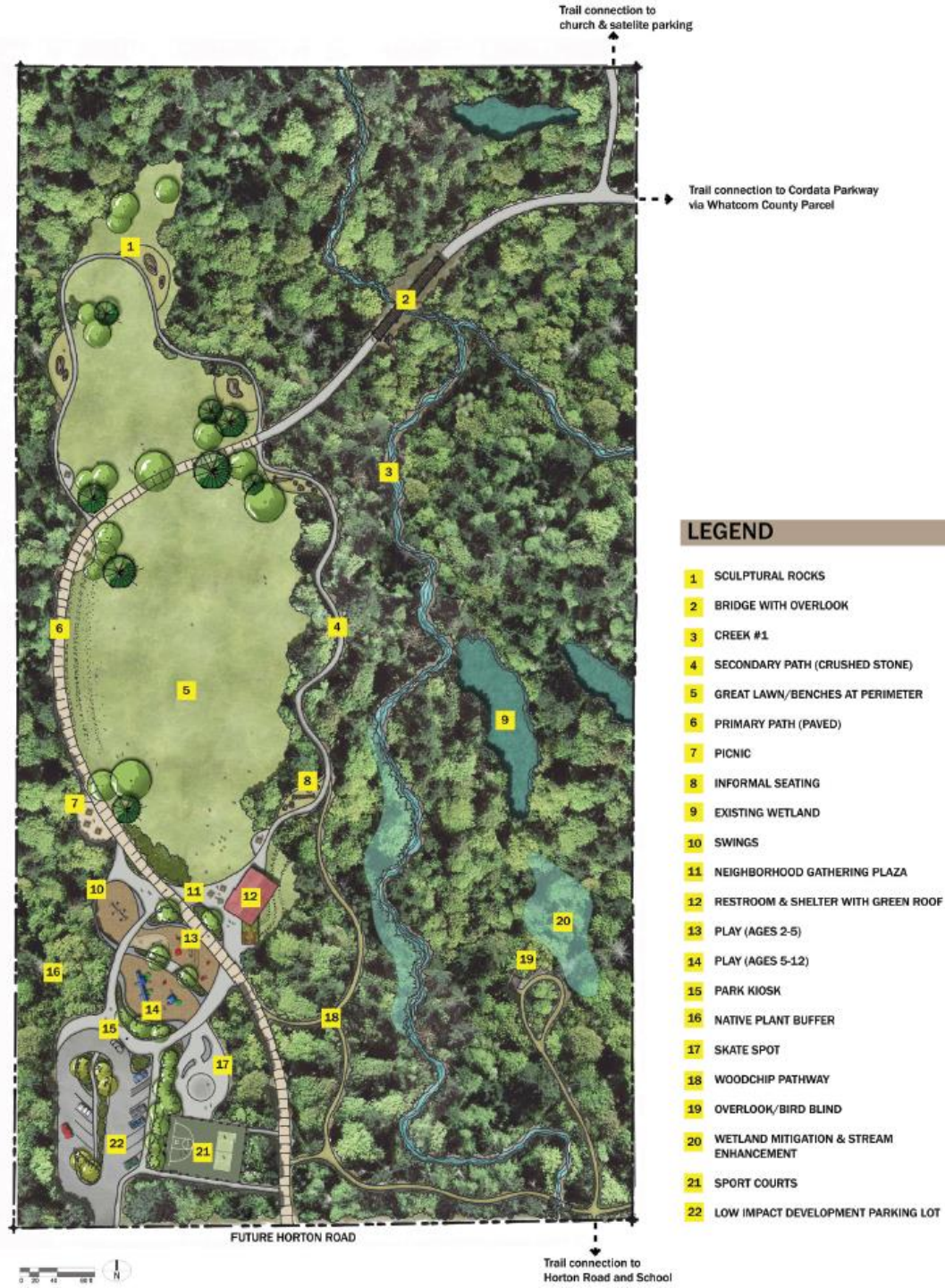


Wetland mitigation site

Other neighborhood parks



Master plan



LEGEND

- 1 SCULPTURAL ROCKS
- 2 BRIDGE WITH OVERLOOK
- 3 CREEK #1
- 4 SECONDARY PATH (CRUSHED STONE)
- 5 GREAT LAWN/BENCHES AT PERIMETER
- 6 PRIMARY PATH (PAVED)
- 7 PICNIC
- 8 INFORMAL SEATING
- 9 EXISTING WETLAND
- 10 SWINGS
- 11 NEIGHBORHOOD GATHERING PLAZA
- 12 RESTROOM & SHELTER WITH GREEN ROOF
- 13 PLAY (AGES 2-5)
- 14 PLAY (AGES 5-12)
- 15 PARK KIOSK
- 16 NATIVE PLANT BUFFER
- 17 SKATE SPOT
- 18 WOODCHIP PATHWAY
- 19 OVERLOOK/BIRD BLIND
- 20 WETLAND MITIGATION & STREAM ENHANCEMENT
- 21 SPORT COURTS
- 22 LOW IMPACT DEVELOPMENT PARKING LOT

THOMAS ROAD
(UNIMPROVED)
N

FUTURE HORTON ROAD

WETLAND 'G'

WETLAND 'C'

UPLAND

SP103

WETLAND 'I'

UPLAND

Trail connection to church & satellite parking

Trail connection to Cordata Parkway via Whatcom County Parcel

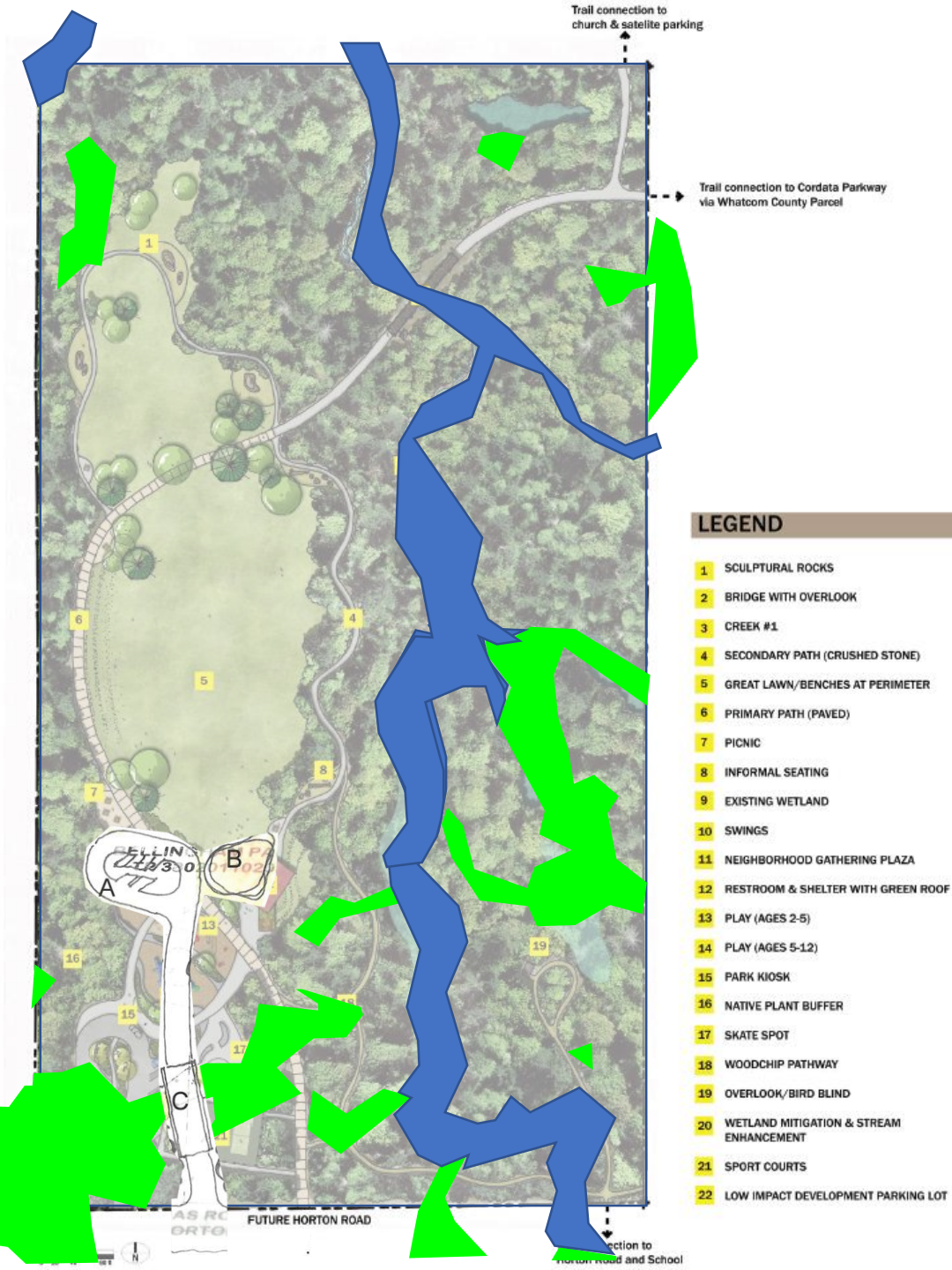
30' SCALE

Horton Road and School

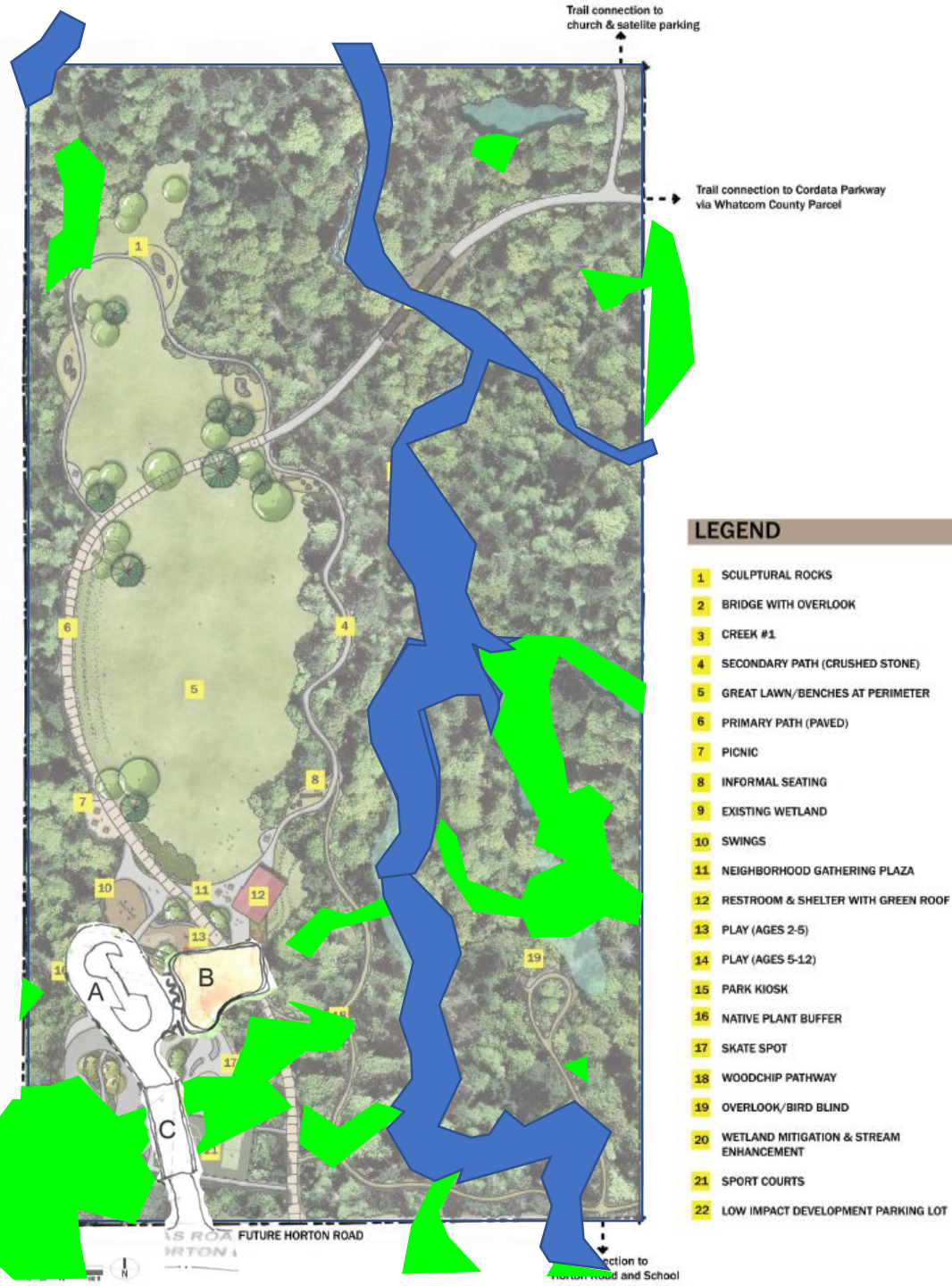
Stream

Wetland

Development Option 1





Development Option 2



LEGEND

- 1 SCULPTURAL ROCKS
- 2 BRIDGE WITH OVERLOOK
- 3 CREEK #1
- 4 SECONDARY PATH (CRUSHED STONE)
- 5 GREAT LAWN/BENCHES AT PERIMETER
- 6 PRIMARY PATH (PAVED)
- 7 PICNIC
- 8 INFORMAL SEATING
- 9 EXISTING WETLAND
- 10 SWINGS
- 11 NEIGHBORHOOD GATHERING PLAZA
- 12 RESTROOM & SHELTER WITH GREEN ROOF
- 13 PLAY (AGES 2-5)
- 14 PLAY (AGES 5-12)
- 15 PARK KIOSK
- 16 NATIVE PLANT BUFFER
- 17 SKATE SPOT
- 18 WOODCHIP PATHWAY
- 19 OVERLOOK/BIRD BLIND
- 20 WETLAND MITIGATION & STREAM ENHANCEMENT
- 21 SPORT COURTS
- 22 LOW IMPACT DEVELOPMENT PARKING LOT

CRITICAL AREA LEGEND

-  Stream
-  Wetland

Development Option 2



Development option 1 & 2

Option	Temp Wetland Impacts	Buffer Impacts	# Parking Spaces	Impervious Area
1	0.10	0.40	5 to 6	0.97
2	0.10	0.60	8 to 9	0.97



Renaming

- **Policy**

- Not named after a living person
- No duplication of park names
- Not named after a deceased person or significant event unless there has been a lapse of at least ten years after the event or death

- **Process**

- Solicit names from the general public
- Record names & forward to Park Board
- Park Board votes
- City Council approves the final name

- **Exceptions to this policy may include:**

- Naming a facility after a living person, recently deceased person, or important event if there is a significant donation or service to the city
- Naming a facility as a condition of accepting a donation
- Temporary names may be used for referencing a facility until a permanent name is approved

Name suggestions

- Alison's Aorta Meadows
- Bear Creek Park
- Circulation Central
- Heart Park
- Horton Park
- Horton Neighborhood Park
- Julie Guy
- Kiss of Autumn
- Maple Park
- Martin Luther King Memorial Park
- Meadowbrook Park
- One tree
- Parky McParkface
- "Pick a Name Already Will You" Park
- Soggy Bottoms
- Spirit ridge
- Starts to blush
- The Other Cordata Park
- Trillium Park
- Twin Park
- Venous Meadow
- West Horton Park
- Who Park

Next steps

- Complete park renaming process
- Develop site plan reflecting the preferred option
- Submit permits
- Construct parking lot, utilities, & selective land clearing



Horton to Cordata celebration

For more information



- To submit park name suggestions:
 - Email parks@cob.org

- For questions about the project:

Gina Austin, PE

Project Engineer

City of Bellingham Parks

Development Division

gaustin@cob.org

360-778-7000

Comments or questions?

Question or comments 11/7/2018