



# Parks Recreation and Open Space Plan

Nicole Oliver, Parks Development Manager  
MNAC – October 16, 2019

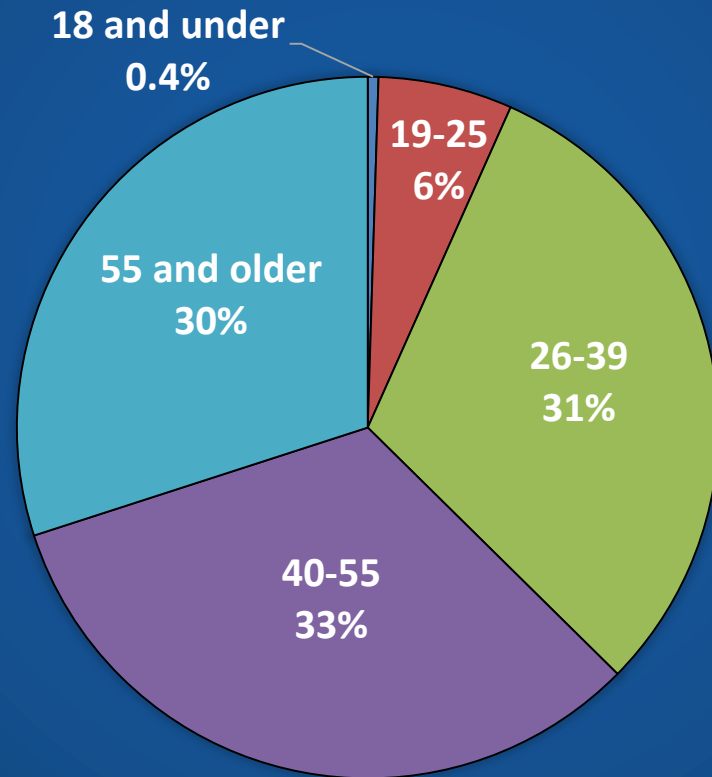


# Project Steps

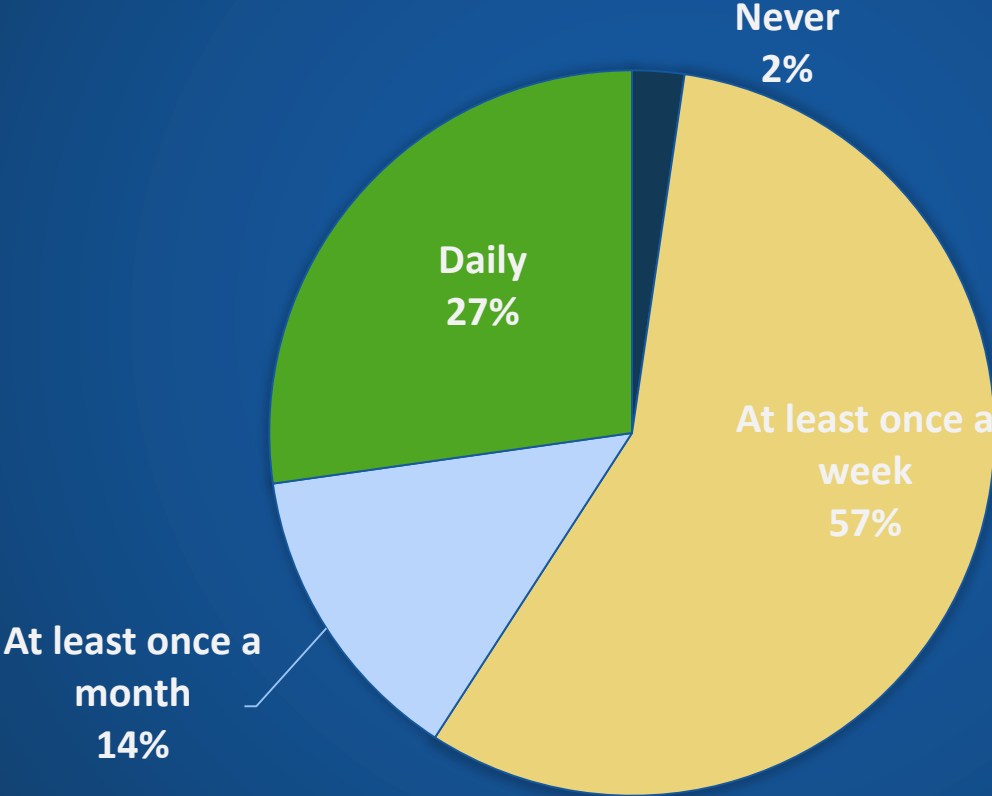
- Public Outreach
  - Workshops and field trips
  - Parks & Rec Board and Greenways Advisory Committee
  - Community survey
  - Public Open House & email comments
- PEP Tool for equity presented to City Council
- GIS-based Park Inventory
- Final Draft to PRAB Oct. 9



# Q2: What is your age

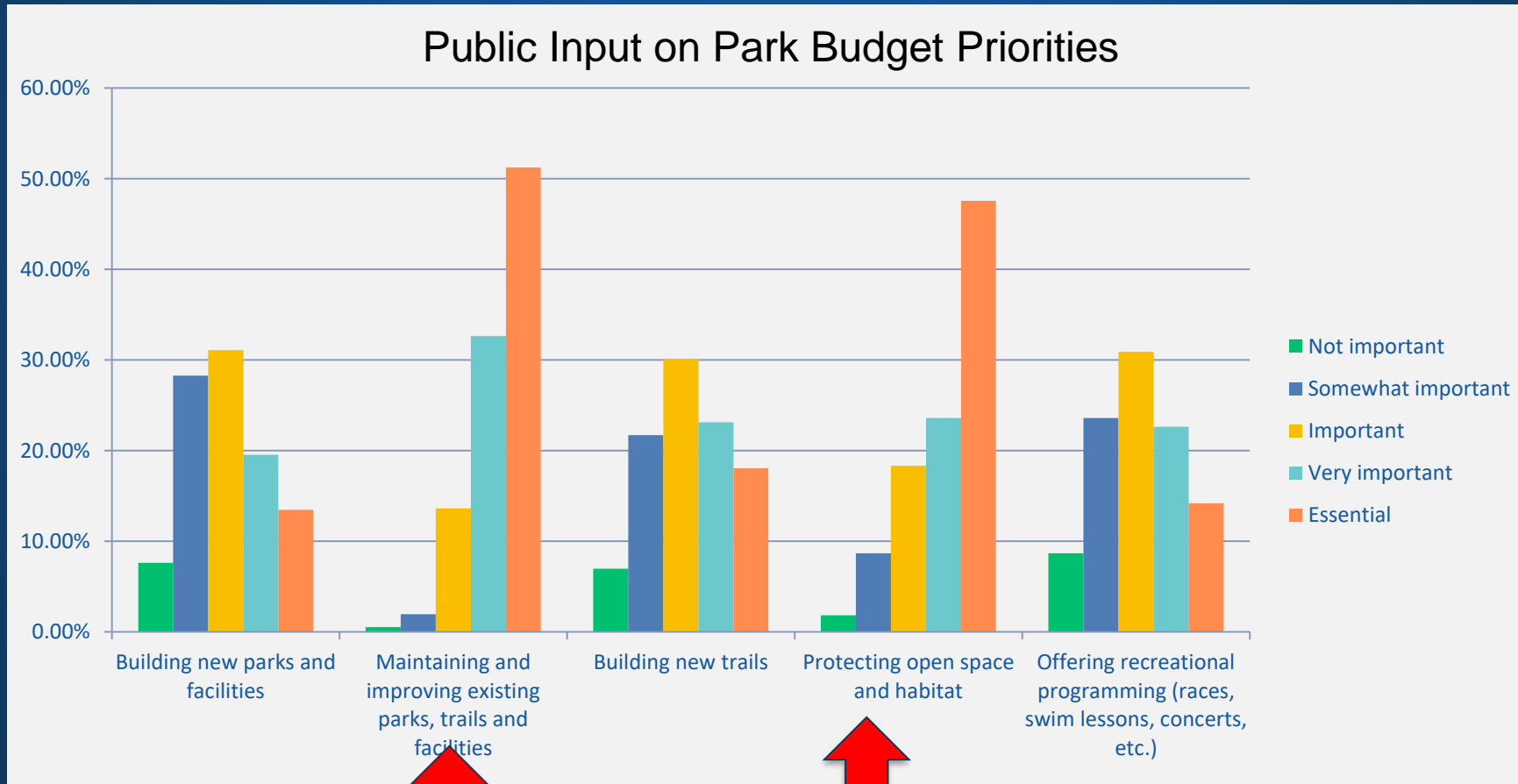


Q3: In the past month, how many times have you visited a park, trail or other park facility in Bellingham?

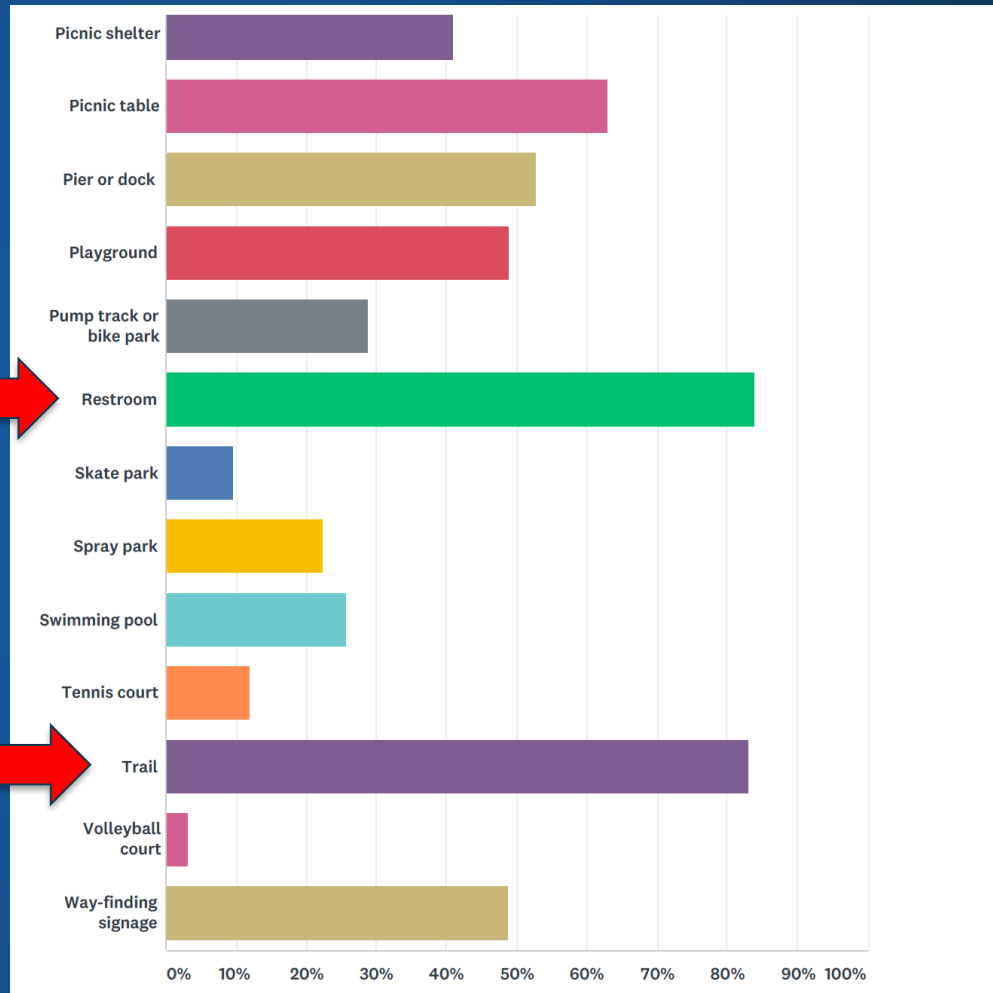
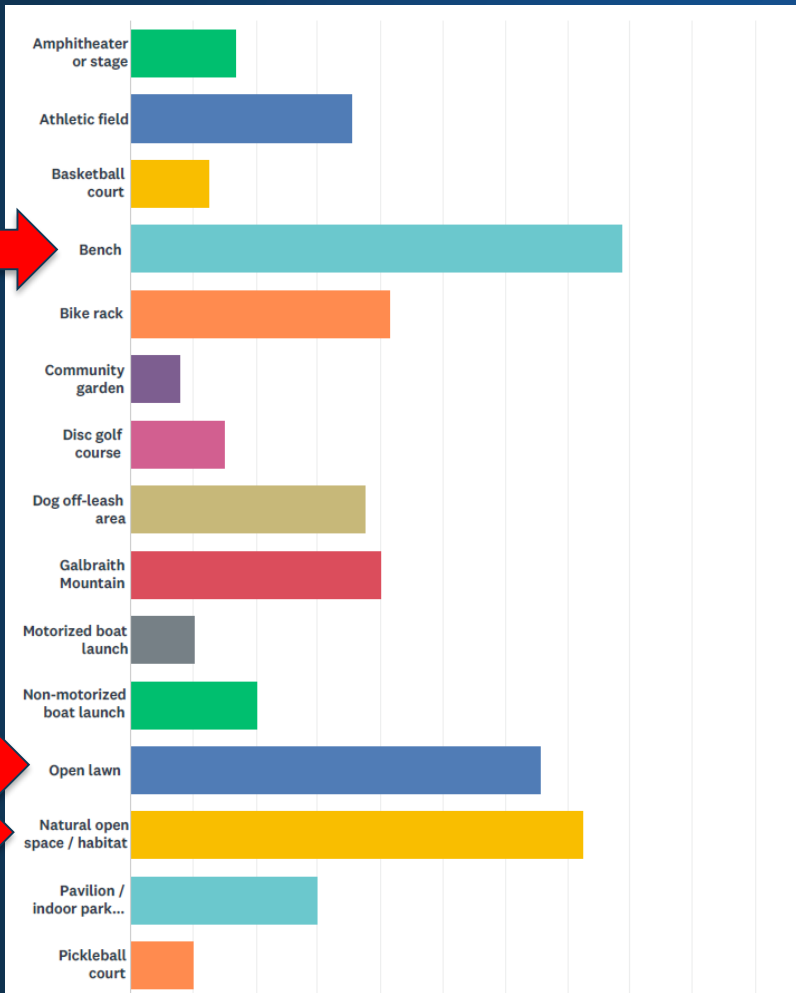




Q4: For each of the following Park budget priorities, rate their importance to you



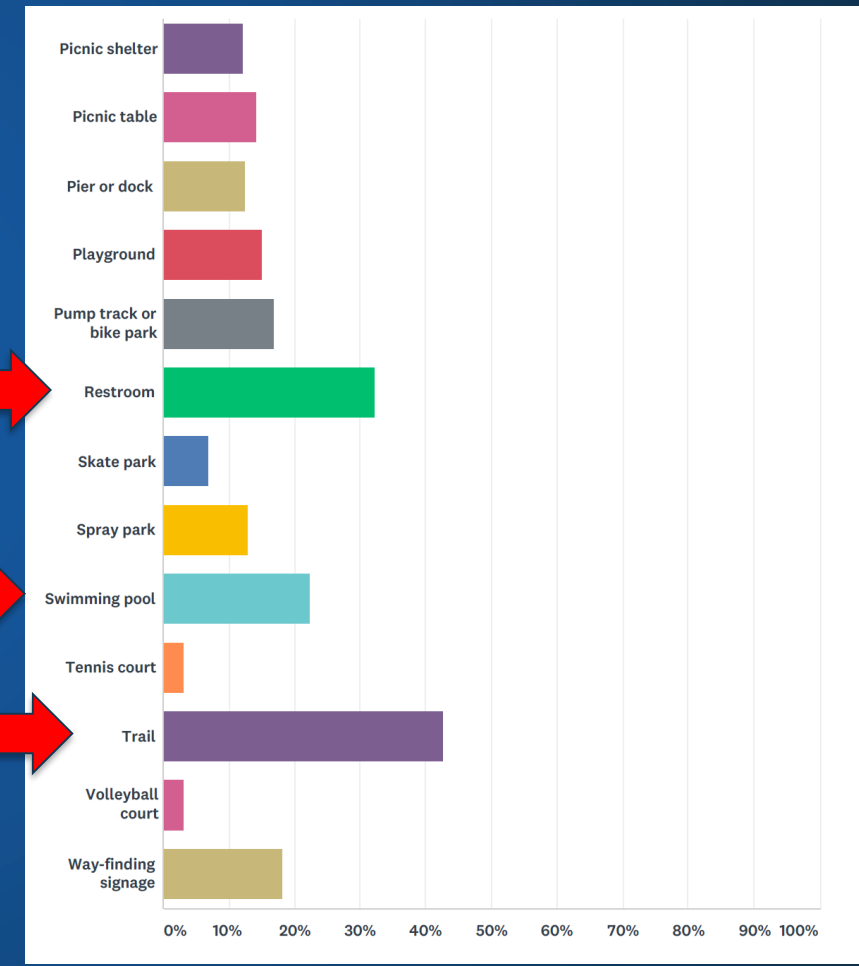
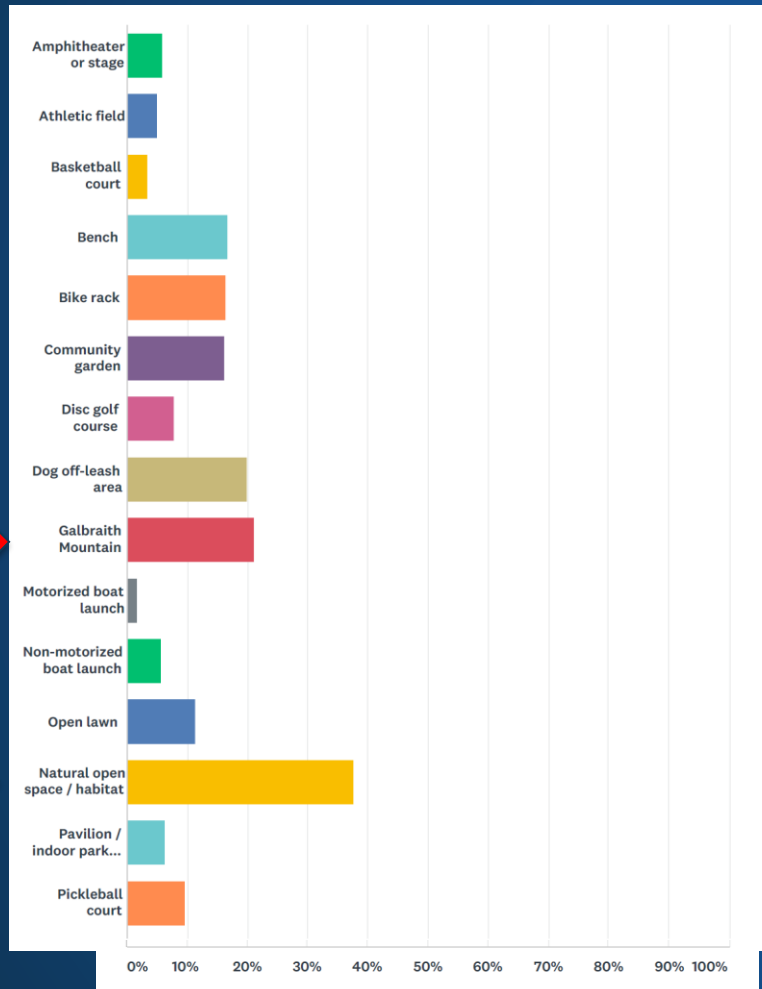
# Q6: Which of the following features have you used in a City-managed park, trail or open space in the last year?



0% 10% 20% 30% 40% 50% 60% 70% 80% 90% 100%

0% 10% 20% 30% 40% 50% 60% 70% 80% 90% 100%

# Q7: Which features do we need more of in Bellingham's parks, trails and open spaces?





# Open Comments

- **Trails/Trailhead (1432)** – more, connectivity, decrease social trails, garbage cans
- **Bikes (494)** – separate mountain bikes from hiking, speed limits, more trails, bike racks, pro/con for e-bikes on trails
- **Safety (425)** – concerns re homelessness, safe bike trails, pedestrian safety
- **Dogs (362)** – More poop bags, trash cans, pro/con off-leash areas
- **Pool (325)** – Need larger pool with more swim lanes

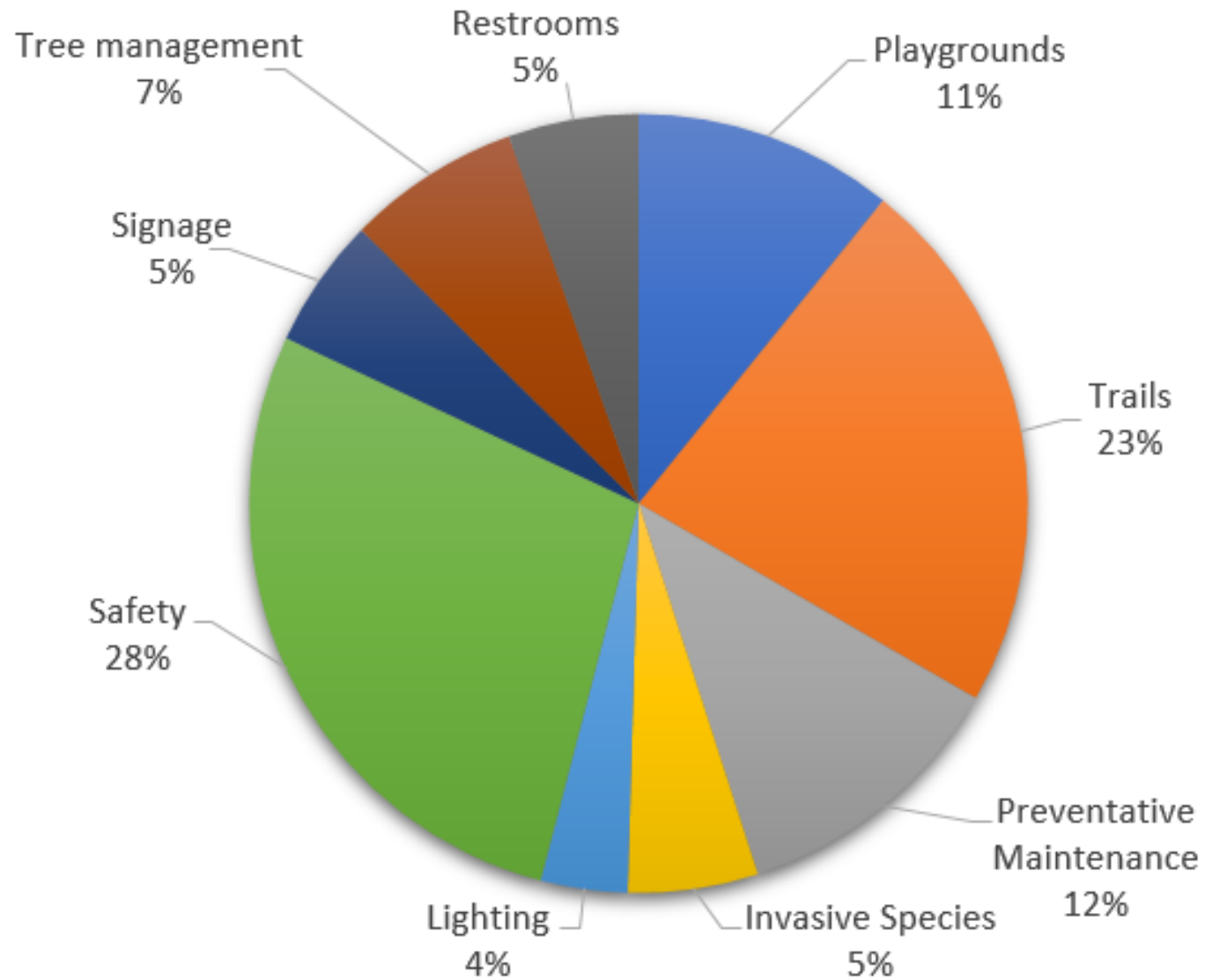


# Open Comments

- **Signage (240)** – Educational signs, way-finding, speed limits
- **Programs (241)** – What programs are available? More bike events, concerts and volunteer programs
- **Restrooms (239)** – Add them to neighborhood parks, year-round access, maintenance
- **Pickleball (184)** – New courts, convert existing courts like Cornwall, covered and lit for year-round play
- **Galbraith (140)** – Way-finding, parking, restrooms



# Maintenance Priorities



# Plan Chapters

- Intro, Goals & Objectives
- Community Setting
- Existing Facilities
- Land and Facility Demand
- Recommendations
- Implementation
- Appendices





# New Principles

- Protective
- Connected
- Playful
- Equitable
- Sustainable
- Inclusive



# Goals and Objectives

- Citiworks Asset Management:
  - Create maintenance standards
  - Prioritize upgrades using PEP Tool
  - Renovate and expand existing facilities (pickleball, skating)
- Community Recreation Needs Assessment
- Year-round staffing
- Explore enforcement options
- Climate Resiliency
- Long-term financial sustainability



Birchwood Park. Photo by Sabine Fuller.

# Multiple Levels of Service

- Proximity
- Acres/person
- Maintenance and Enhancement
- Cost/person

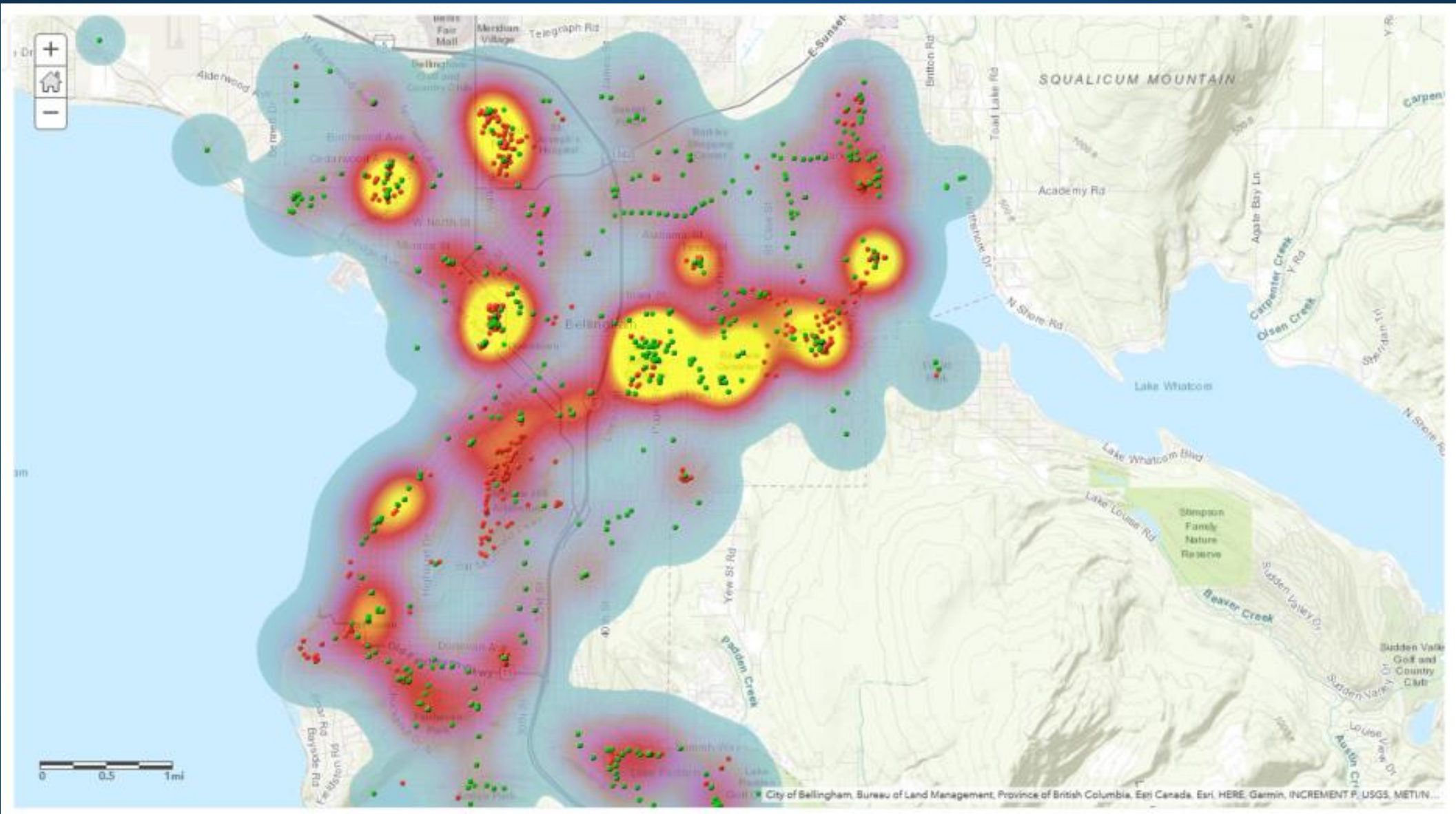


Acid Ball at Waypoint Park. Photo by Jerry Legault.

# Level of Service

<b>Park System Standard – City &amp; UGA</b>							
	<b>Total Land</b>	<b>Trail Miles</b>	<b>Neighborhood Parks</b>	<b>Community Parks</b>	<b>Special Use Sites</b>	<b>Open Space</b>	<b>Total value/capita</b>
2019 City Existing/1000	35.4	0.9	1.4	15.7	3.3	15	\$6,070
2019 City + UGA Standard/1000	35.8	0.8	1.3	14.1	3	17.3	
2040 City + UGA Standard/1000	28.4	1	1.2	10.9	2.3	13.9	\$5,012







# Parks Enhancement Prioritization Tool (PEP Tool)

*Goal 7(c): Prioritize capital improvements based on safety, condition, socio-economic factors and population served.*

	% Multi-family housing ½ mile	% of families on free or reduced school lunches	Population within ½ mile	Final Score	Priority
Playground A	15% = 0.0	20% = 2.9	1245=1.5	4.4	3
Playground B	25% = 2.0	14% = 0	650 = 0	2.0	4
Playground C	50% = 7.0	23% = 4.3	4500 = 10	21.3	2
Playground D	65% = 10	35% = 10	2500 = 4.8	24.8	1

# Neighborhood Parks

- ½ mile walk
- Add restrooms
- Use PEP Tool



## Recommendations

Acquire and develop neighborhood park in the Bakerview corridor.

Renovate and upgrade Shuksan Meadows Park.

Develop Julianna Park.

Develop Maplewood/McLeod Park.

Add additional park amenities at Sunset Pond Park.

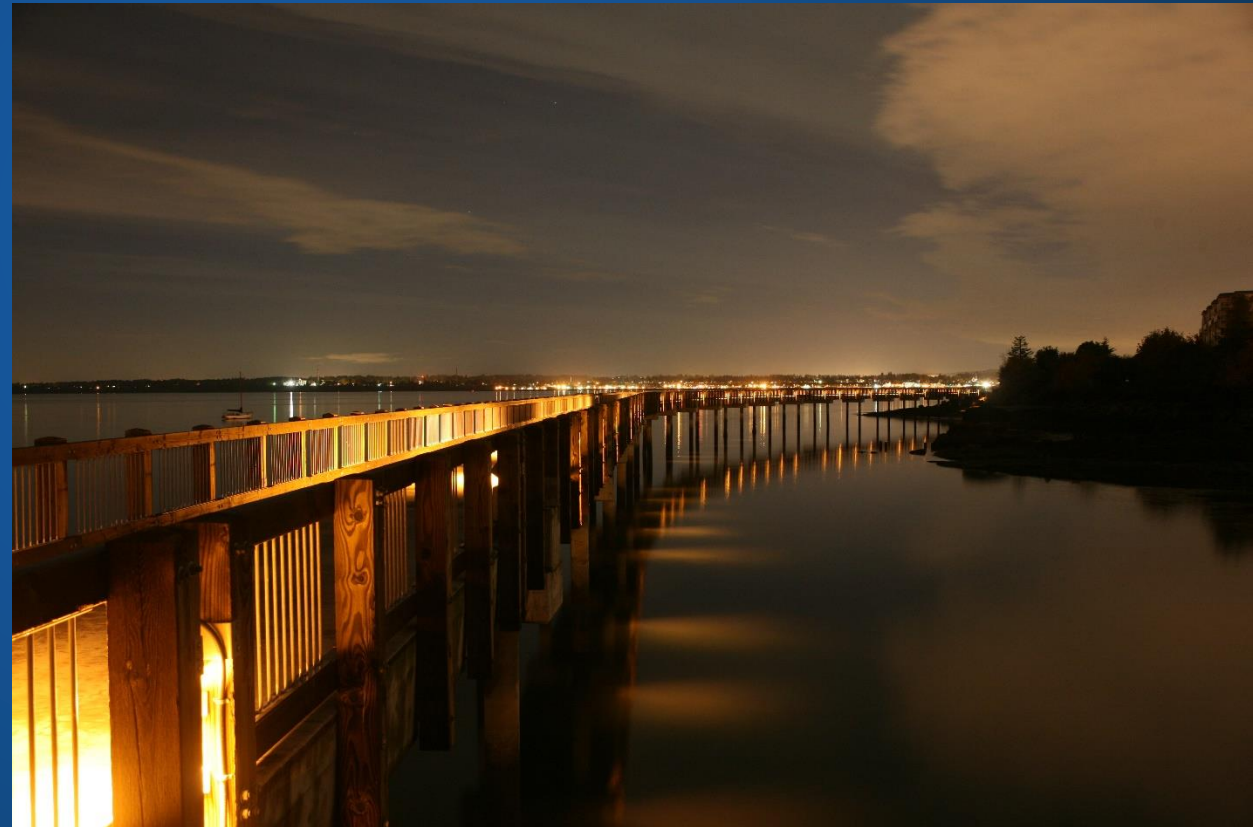
Acquire a Neighborhood Park in Happy Valley.

Plan and develop North Samish Hill Park.

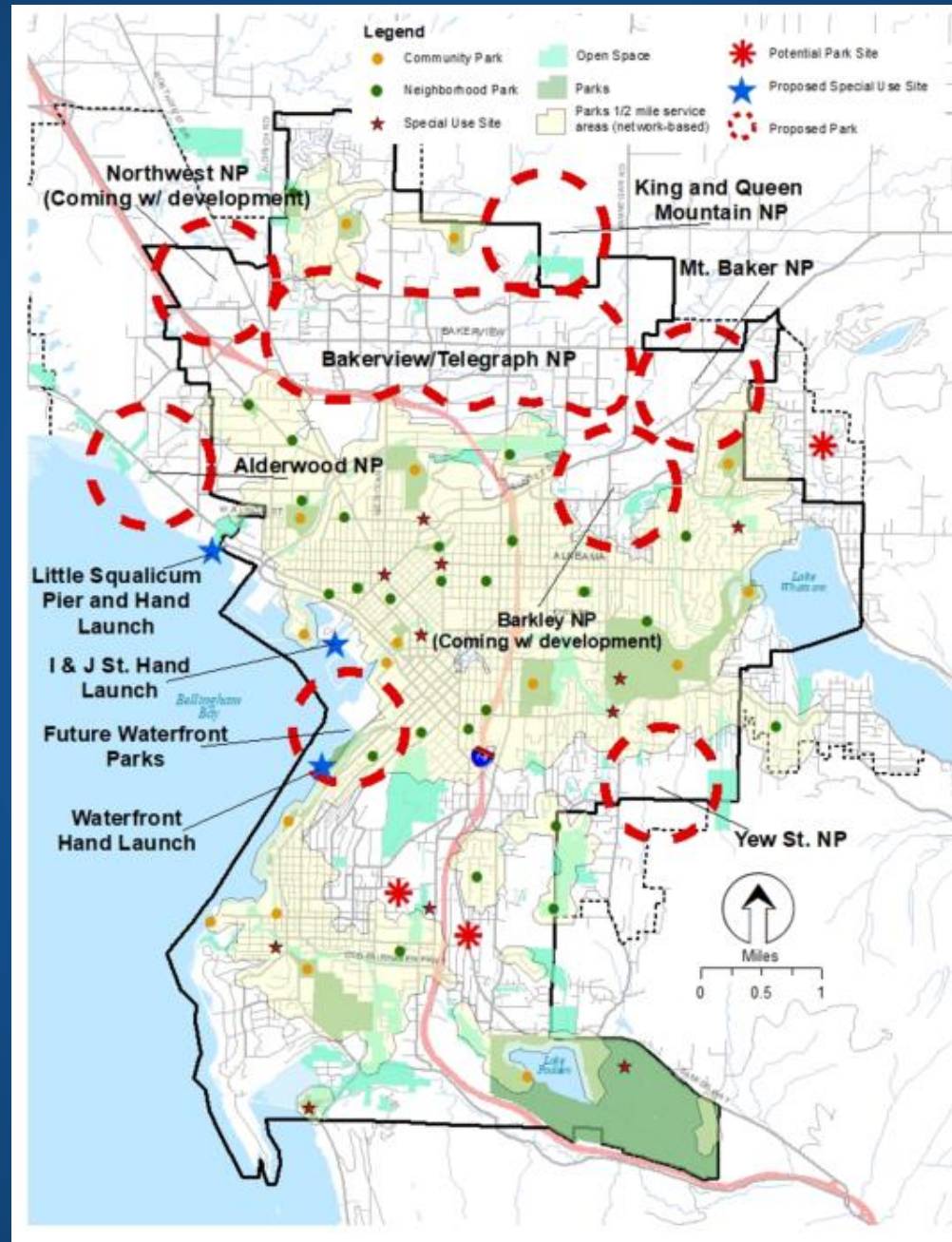
Recommendations
Construct new restrooms at Boulevard Park
Develop Cordata Park Phase 2
Pursue partnership with YMCA and Arne Hanna Aquatic Center
Complete a master plan for Fairhaven Park's Chuckanut Community Forest
Complete Boulevard Park clean up of South State Street Manufactured Gas Plant
Replace roof at Bloedel-Donovan multi-purpose building
Implement recommendations from Cornwall Park Task Force
<a href="#"><u>Collaborate on donation of Bloedel-Donovan swim docks</u></a>
Master Plan and develop Van Wyck Park
Develop Cornwall Beach Park

# Community Parks

- Locate every 4 square miles
- Complete waterfront parks
- Capital Maintenance Plans









# Special Use

- Hand-carry boat launch
- North end skate park
- New town squares and plazas



## Recommendations

Acquire and renovate the pier for public access at Little Squalicum Park.

Add parking, ADA access and trail connectivity to Woodstock Farm and develop a strategic management and maintenance plan.

Provide identified improvements to community gardens, and form a committee to propose a strategic management and maintenance plan.

Implement master plan improvements at Big Rock Garden, including improved fencing.

# Trails

## Recommendations

Acquire trail corridor along Squalicum Creek.

Extend trail along Whatcom Waterway as development occurs.

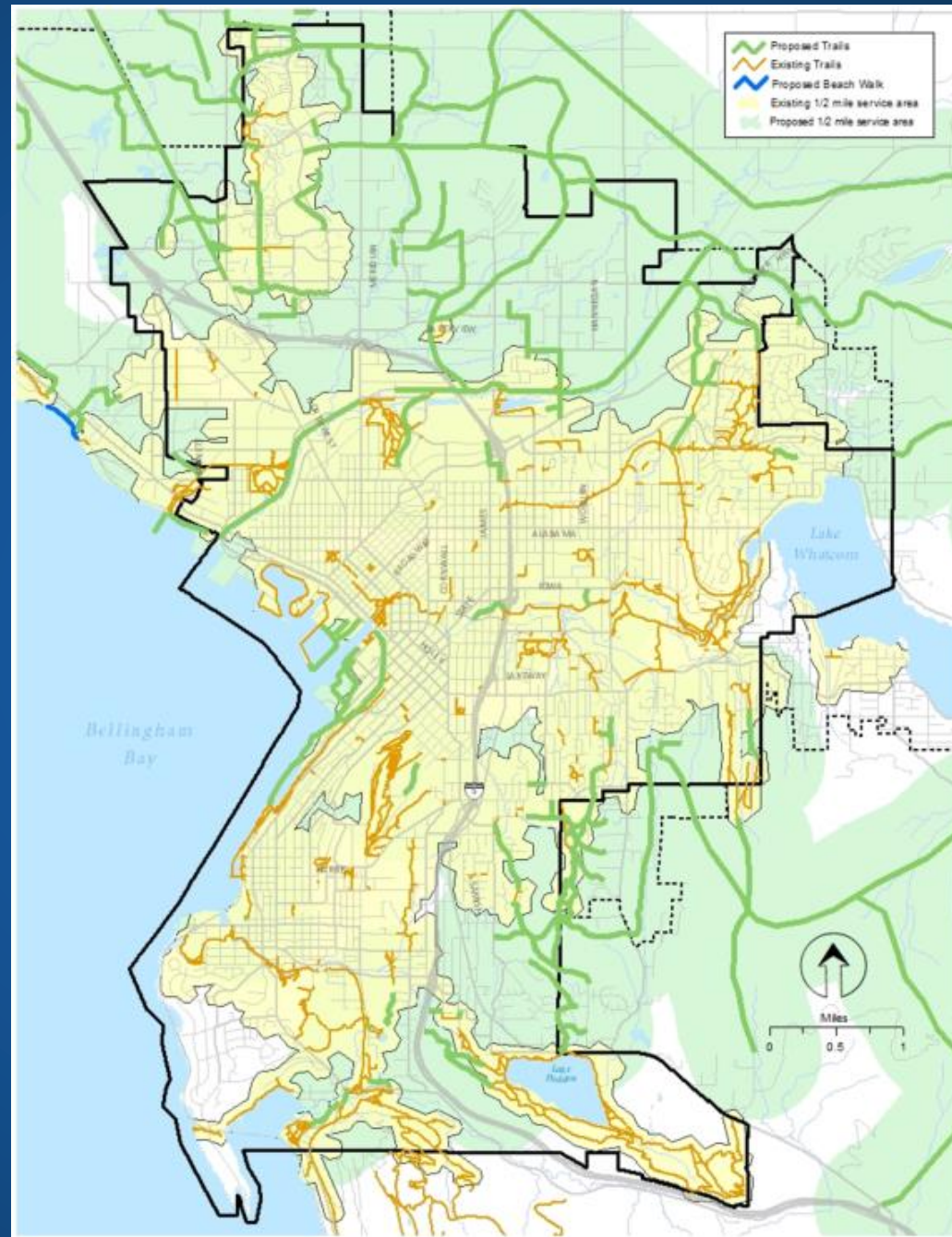
Samish Crest – complete connection to Lake Padden.

Connect Riley Open Space and the Cordata Trail.

Evaluate and replace bridges – Wildflower, Civic, Silver Creek.

Acquire and improve trailhead parking and access to Galbraith from the north.

Complete Locust Beach trailhead and trail improvements.





# Open Space

- Per map
- Waterfront access
- Evaluate Samish Crest
- Restore habitat and remove invasive species

<b>Recommendations</b>
Improve parking and wayfinding at Riley Open Space.
Prioritize and implement recommendations of Urban Forestry Plan on Parks open space.
Develop access to King and Queen Mountain Greenway.



# Implementation

- Assumes similar funding to last 5 years
  - REET
  - Park Impact Fees
  - Greenways or other levy
  - Grants & donations
- Total estimated recommendations cost: \$107m
- Total estimated system value: \$546.9m – basis for PIF Fee





# Next Steps

- PRAB final recommendation: November 13
- Planning Commission: December 6
- City Council: January 2020
- Approval to State RCO due March 1, 2020





# Questions?

[www.cob.org/proplan](http://www.cob.org/proplan)

