

2019-2020



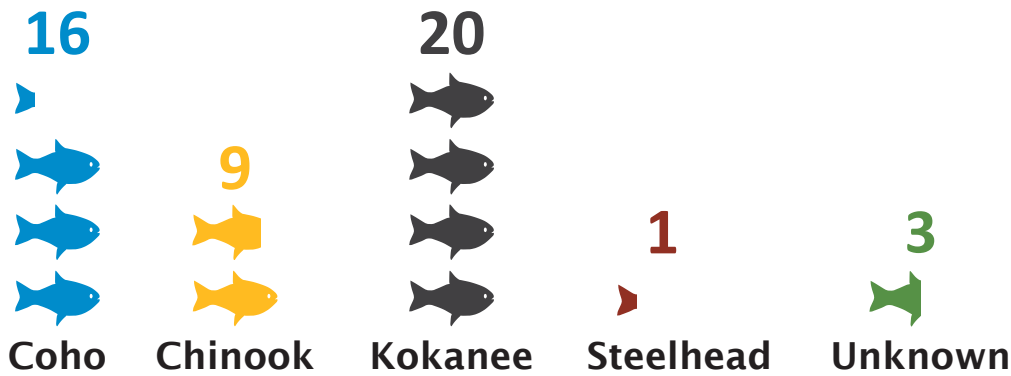
Salmon Spawner Surveys Padden Creek

Spawner surveys were conducted weekly between
September 2019 and March 2020*

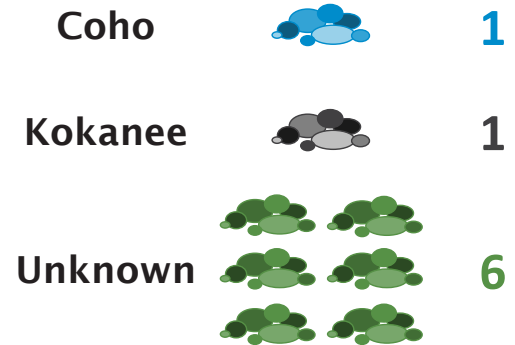
**Survey season ended early due to COVID-19*

Fish Monitoring Results

Live + dead fish observed

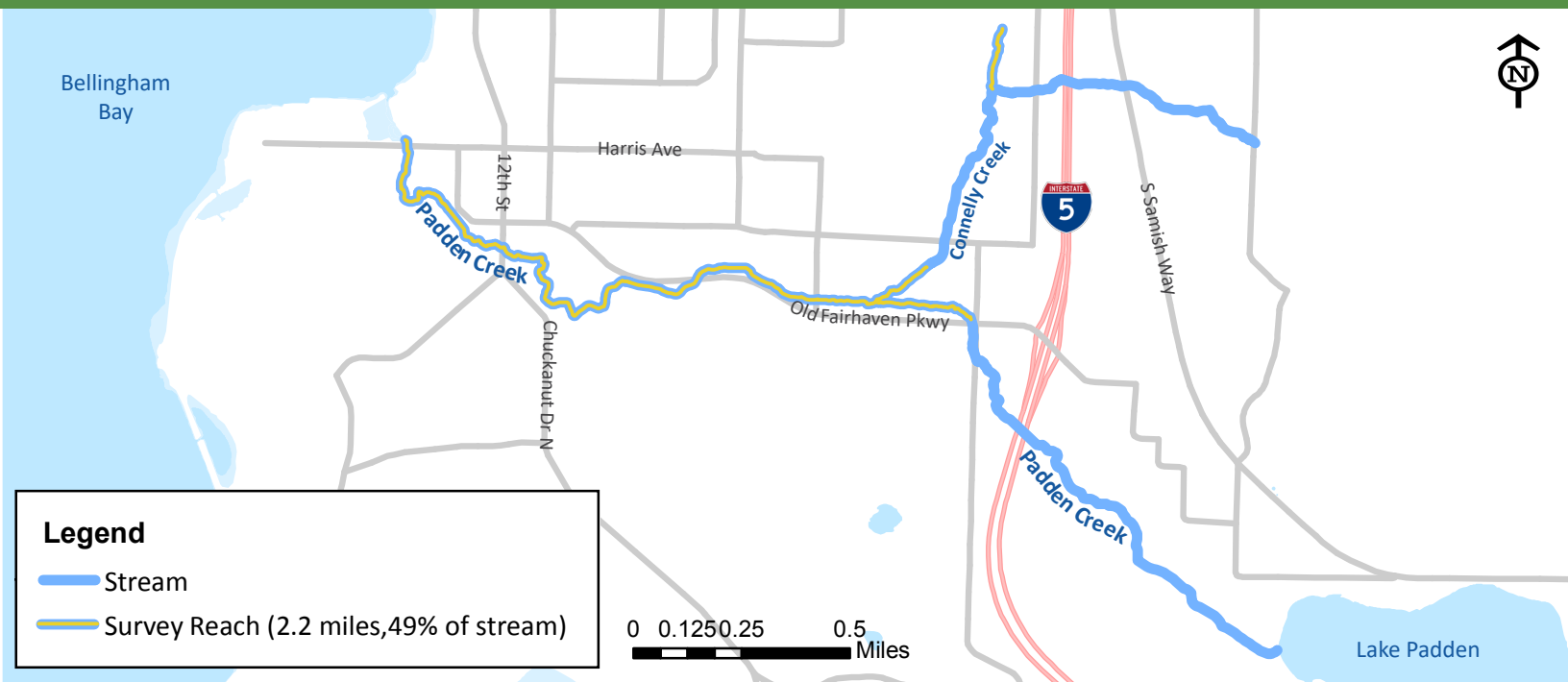


Redds* observed



*Redd: A nest dug in gravel by fish to deposit their eggs

Stream Survey Map



Learn more by visiting our Fish Studies webpage at www.cob.org/habitat