

The Bellingham Plan

Scope of work for the 2025 Comprehensive Plan Periodic Update

June 2023

Updates to the plan will focus on changes that...

Build upon what is valued today

- » Outdoor recreation and opportunities to explore nature
- » Convenient access to friends and family, a variety of activities, services, and more
- » Small and local businesses
- » Vibrant and unique places
- » Mitigation of climate change contributions/GHG emissions
- » Connections to Bellingham's full range of historic periods

Respond to changed conditions

- » Expanded capacity for housing and jobs to meet expected 20-year growth
- » Planning for increased telework to jobs based both in Bellingham and elsewhere
- » Health resilience and accommodation
- » Housing affordable to all income bands (HB 1220), especially those aligned with local employment
- » Integrated and comprehensive approach to address gaps in housing and human services
- » Approaches to assist vulnerable populations struggling with mental health and addiction issues
- » Climate resilience and adaptation (HB 1181)
- » A range of housing types to support current and future residents' housing needs, including a diversification of middle scale housing with larger units (HB 1110, HB 1337)
- » Land use investment in planned transit network improvements
- » Potential annexation and/or changes to the UGA boundary

Aspire to a brighter future

- » A safe and welcoming environment
- » A healthy community, physically and mentally
- » Economic vitality, business diversification, and living-wage jobs
- » An active community that is informed and engaged on a range of city issues
- » Gathering places of varied types and sizes across the city
- » An accessible, diverse, equitable, and inclusive community (ADEI)

Increase the legibility of the plan for a broad range of audiences

- » Document simplification and usability improvements
- » Links between related topics
- » Online interaction in addition to traditional printable format



Accessibility,
Diversity, Equity, &
Inclusion (ADEI)



Climate Mitigation
& Resilience



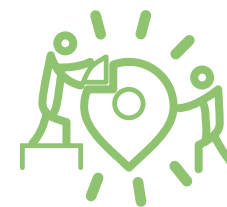
Economic Vitality



Housing Options &
Affordability



Public Health &
Safety



Vibrant & Unique
Places