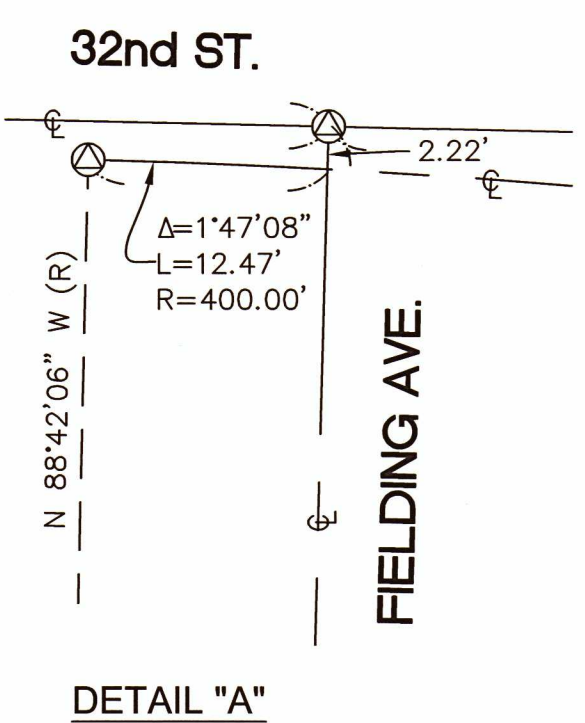


- LEGEND**
- PRIMARY CONTROL**
- COB 1354 FOUND 2" BRASS DISK IN CONCRETE AT SURFACE (TYP.)
 - COB 477 FOUND 3" BRASS DISK IN CONCRETE AT SURFACE
- SECONDARY CONTROL**
- △ (112) SET TRAVERSE POINT PER SECONDARY CONTROL TABLE (TYP.)
 - FOUND LEAD & TACK WITH BRASS WASHER "PLS 18927" AT PROPERTY CORNER
 - FOUND 5/8" REBAR & YELLOW PLASTIC CAP WITH TACK "CONST. SURV NW PLS 18927" 0.4' DOWN AT PROPERTY CORNER
- LINETYPES**
- RIGHT-OF-WAY CENTERLINE
 - RIGHT-OF-WAY
 - VACATED RIGHT-OF-WAY
 - PROPERTY LINE
 - SUBJECT PROPERTY LINE
 - EASEMENT
 - ROAD DEDICATION LIMITS



WAC 332-130-145 TOPOGRAPHIC ELEMENTS ON MAPS-REQUIREMENTS

- 1) INCLUDED IN THIS DRAWING ARE THE FOLLOWING REQUIRED ELEMENTS:
- VERTICAL DATUM = NAVD 88, PUBLISHED COB ELEVATIONS.
 - NORTH ARROW.
 - MAP SCALE AND GRAPHIC SCALE BAR.
 - LEGEND OF SYMBOLS USED.
 - LICENSEE NAME AND CONTACT INFORMATION.
 - SEAL AND SIGNATURE OF LICENSEE.
- 2) STATEMENTS OF CLARIFICATION OF ELEMENTS SHOWN:
- ELEVATIONS ARE BASED UPON THE FOLLOWING CITY OF BELLINGHAM NAVD88 BENCHMARKS:
 COB RIGHT OF WAY CENTER LINE MONUMENT #1354 LOCATED AT THE INTERSECTION OF 32ND ST. AND ADAMS AVE. 2" BRASS DISK AT SURFACE WITH A PUBLISHED ELEVATION OF 194.32 FEET.
 COB RIGHT OF WAY CENTER LINE MONUMENT #1962 LOCATED AT THE INTERSECTION OF 32ND ST. AND FIELDING AVE. 2" BRASS DISK AT SURFACE WITH A PUBLISHED ELEVATION OF 198.64 FEET.
 PRIMARY AND SECONDARY VERTICAL CONTROL WAS ESTABLISHED BY RUNNING CLOSED LOOP DIFFERENTIAL LEVELS.
 - INTENDED USE OF THE TOPOGRAPHIC ELEMENTS IS FOR CIVIL ENGINEERING DESIGN ONLY FOR THE CITY OF BELLINGHAM'S IN-HOUSE DESIGN/BUILD PILOT PROJECT.
 - SOURCE OF CONTOURS - BASED UPON DIRECT FIELD OBSERVATIONS AND GENERATED USING AUTODESK CIVIL 3D 2020.
 - CONTOUR LABELING - MAJOR CONTOURS ARE LABELED AT 5 FOOT INTERVALS.
 - DESCRIPTION OF PROJECT BENCHMARKS ESTABLISHED: SEE DRAWING COORDINATE TABLES.

WAC 332-130-145 TOPOGRAPHIC ELEMENTS (CONTINUED)

- THIS MAP COMPLIES WITH THE NATIONAL MAP ACCURACY STANDARD (NMAS). 90% OF ALL POINTS COLLECTED ARE CORRECT WITHIN HALF THE CONTOUR INTERVAL.
 - STATEMENT OF LIMITATIONS OF USE. THESE DRAWINGS ARE FOR CIVIL ENGINEERING DESIGN ONLY. THIS IS NOT A BOUNDARY SURVEY.
 - DEPICTED BOUNDARY INFORMATION RELIES UPON THE FOLLOWING RECORDED DRAWINGS:
 DAWSON CONSTRUCTION LLA No.2 AFN 2010102148
 RECORD OF SURVEY AFN 1980202463
 JACOBSEN'S SHORT PLAT AFN 1228100
 TRYKOR SHORT PLAT AFN 1293984
 WILLOWWOOD SHORT PLAT AFN 1329706
 AMENDED PLAT OF GEO. A. KELLOGG'S OUT LOTS VOL. 5, PG. 2
 POMEROY-WILDJAY LLA AFN 2021-1000499
 POMEROY-UPPER SKAGIT LLA AFN 2019-1204025
- 3) STATEMENTS OF CLARIFICATION OF UTILITY INFORMATION SHOWN:
- SOURCE OF UTILITY LOCATIONS: A COMBINATION OF FIELD MEASUREMENTS AND SURFACE MARKING BY THE WASHINGTON UTILITY NOTIFICATION CENTER 811.
 - STATEMENT OF ACCURACY OF UTILITY DEPICTION: UNDERGROUND UTILITY LOCATIONS WERE MARKED BY THE WASHINGTON UTILITY NOTIFICATION CENTER AND PURPORT TO MEET THE NOTIFICATION CENTER'S ACCURACY STANDARDS.
- CITY OF BELLINGHAM ASSUMES NO LIABILITY FOR ANY SUBSURFACE CONDITIONS OR UTILITIES THAT MAY EXIST THAT ARE UNDETECTABLE AND OR NOT VISIBLE. ALL EXISTING UTILITIES MAY NOT BE INDICATED WITH THE CONSTRUCTION DOCUMENTS. IT IS THE RESPONSIBILITY OF THE CONTRACTOR TO FIELD VERIFY ANY AND ALL UNDERGROUND UTILITY LOCATIONS PRIOR TO CONSTRUCTION AND TO ALERT THE ENGINEER AND OWNER PROMPTLY IN CASE OF CONFLICT.

SURVEYOR'S NOTES

HORIZONTAL DATUM
 NAD83/98, WASHINGTON STATE PLANE COORDINATE SYSTEM, NORTH ZONE. REFERENCE = CITY OF BELLINGHAM 2005 HORIZONTAL CONTROL NETWORK, RECORD OF SURVEY AFN 2071002449.

BASIS OF BEARINGS
 BEARINGS ARE BASED UPON THE INVERSED CITY OF BELLINGHAM RECORD COORDINATES ALONG THE MONUMENTED CENTERLINE OF 32ND ST. BETWEEN CITY OF BELLINGHAM BRASS DISK MONUMENT 1354 REPRESENTING THE INTERSECTION OF 32ND ST. AND ADAMS AVE. AND CITY OF BELLINGHAM BRASS DISK MONUMENT 1382 REPRESENTING THE INTERSECTION OF 32ND ST. AND FERRY AVE., SAID BEARING BEING N 01° 17' 46" E WITH A MEASURED DISTANCE OF 561.23 FT. AS SHOWN ON THIS DRAWING.

BASIS OF COORDINATES
 COORDINATES ARE BASED UPON THE CITY OF BELLINGHAM PUBLISHED COORDINATES, RECORD OF SURVEY AFN 2071002449 FOR COB MONUMENT 1962, A BRASS DISK REPRESENTING THE RIGHT OF WAY CENTER LINE INTERSECTION OF 32ND ST. AND FIELDING AVE. PUBLISHED COORDINATES ARE:
 NORTHING 635,323.63 USFT
 EASTING 1,244,120.45 USFT

FIELD PROCEDURE
 THE TOPOGRAPHIC INFORMATION WAS GATHERED BY FIELD MEASUREMENTS USING STANDARD, RECOGNIZED FIELD PROCEDURES WITH A TOPCON GT-603 3" ROBOTIC TOTAL STATION AND A TOPCON DL-502 DIGITAL LEVEL BETWEEN JUNE 13, 2023 AND JULY 20, 2023.

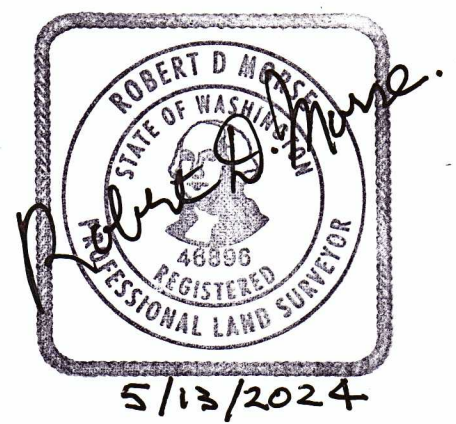
THIS SURVEY WAS COMPLETED WITHOUT THE BENEFIT OF A SUBDIVISION GUARANTEE.

PRIMARY CONTROL COORDINATE TABLE (NAD83/98 NAVD88)

POINT	NORTHING	EASTING	ELEVATION	DESCRIPTION
477	635,985.12	1,244,135.64	---	FOUND BRASS DISK - 1/4 CORNER
1354	634,762.54	1,244,107.76	194.32	FOUND BRASS DISK AT INTX. 32ND ST & ADAMS AVE
1382	635,147.53	1,244,116.51	199.17	FOUND BRASS DISK AT INTX. 32ND ST & FERRY AVE
1762	635,159.82	1,243,574.99	---	FOUND BRASS DISK AT INTX. 31ST ST & FERRY AVE
1765	635,314.87	1,244,452.24	190.27	FOUND BRASS DISK AT INTX. FIELDING AVE & VAC. 33RD ST
1962	635,323.63	1,244,120.45	198.64	FOUND BRASS DISK AT INTX. 32ND ST & FIELDING AVE
5139	635,651.50	1,244,128.01	219.51	FOUND BRASS DISK AT INTX. ELWOOD AVE & ELWOOD CT
5264	635,311.12	1,244,122.20	---	FOUND BRASS DISK AT PC 32ND ST CONNECTOR
5265	635,566.91	1,244,222.34	203.06	FOUND BRASS DISK AT PT 32ND ST CONNECTOR
5266	635,791.05	1,244,420.29	200.60	FOUND BRASS DISK AT PC 32ND ST CONNECTOR

SECONDARY CONTROL COORDINATE TABLE (NAD83/98 NAVD88)

POINT	NORTHING	EASTING	ELEVATION	DESCRIPTION
100	635,283.99	1,244,149.36	196.85	REBAR AND PINK PLASTIC CAP "TRAV. PT COB"
102	635,570.63	1,244,171.70	209.23	REBAR AND PINK PLASTIC CAP "TRAV. PT COB"
105	635,648.22	1,244,326.31	202.08	REBAR AND PINK PLASTIC CAP "TRAV. PT COB"
110	635,427.70	1,244,127.58	205.73	REBAR AND PINK PLASTIC CAP "TRAV. PT COB"
112	635,162.46	1,244,137.56	198.62	HIT PIN WITH PUNCH MARK

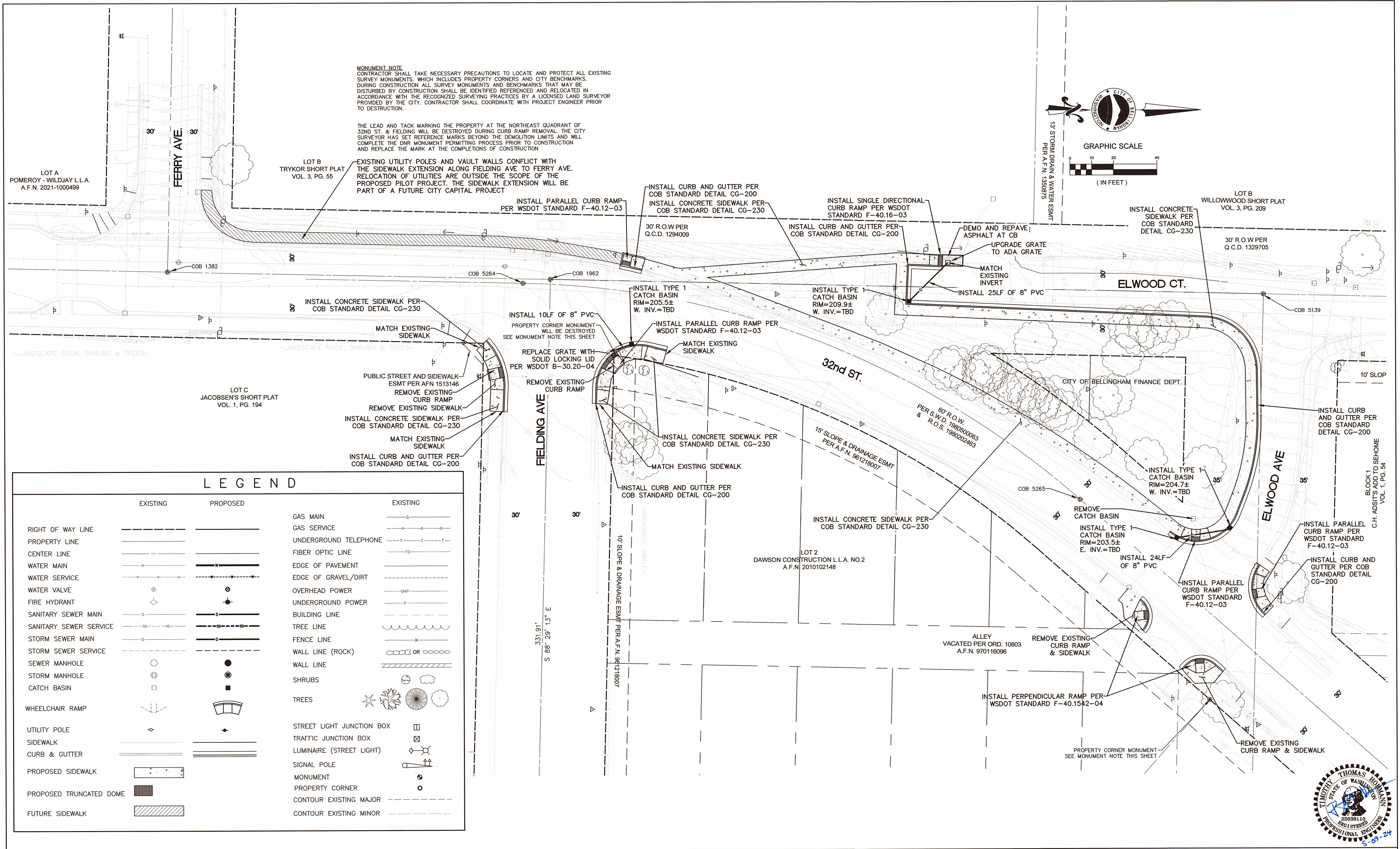
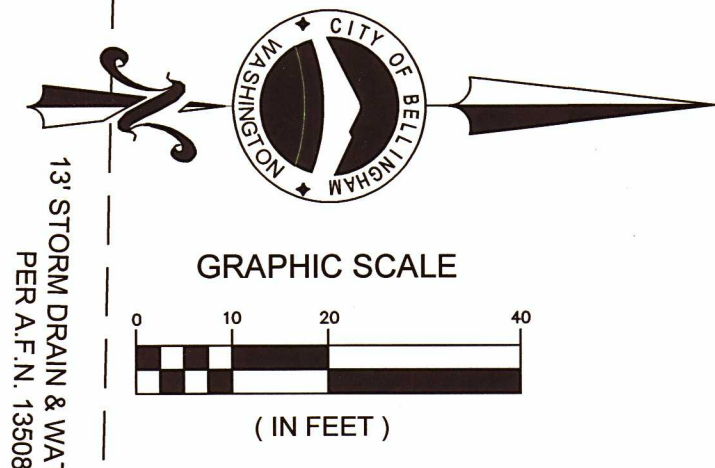


4 3 2 1 Date No Revision By	PROJECT ENGINEER <u>JAM</u> DESIGNED/DRAWN <u>AKM</u> INSPECTOR <u>TBD</u>	DIRECTOR PUBLIC WORKS <u>E.C.J.</u> CITY ENGINEER <u>M.L.W.</u> ASSISTANT DIRECTOR <u>M.A.O.</u>	CITY OF BELLINGHAM, WASHINGTON PUBLIC WORKS DEPARTMENT ENGINEERING DIVISION	SCALE Horiz. 1"=40' Vert. 1"=NA	DATUM NAD 83/98 NAVD 88	Job. No. <u>PILOT</u> Date <u>FEB. 2023</u> Field Bk. <u>1072</u>	SURVEY CONTROL 32ND ST. & ELWOOD AVE. IMPROVEMENTS	SHEET 1 OF 5
---	--	--	---	---------------------------------------	-------------------------------	---	---	--------------------

MONUMENT NOTE
 CONTRACTOR SHALL TAKE NECESSARY PRECAUTIONS TO LOCATE AND PROTECT ALL EXISTING SURVEY MONUMENTS, WHICH INCLUDES PROPERTY CORNERS AND CITY BENCHMARKS. DURING CONSTRUCTION ALL SURVEY MONUMENTS AND BENCHMARKS THAT MAY BE DISTURBED BY CONSTRUCTION SHALL BE IDENTIFIED, REFERENCED AND RELOCATED IN ACCORDANCE WITH THE RECOGNIZED SURVEYING PRACTICES BY A LICENSED LAND SURVEYOR PROVIDED BY THE CITY. CONTRACTOR SHALL COORDINATE WITH PROJECT ENGINEER PRIOR TO DESTRUCTION.

THE LEAD AND TACK MARKING THE PROPERTY AT THE NORTHEAST QUADRANT OF 32ND ST. & FIELDING WILL BE DESTROYED DURING CURB RAMP REMOVAL. THE CITY SURVEYOR HAS SET REFERENCE MARKS BEYOND THE DEMOLITION LIMITS AND WILL COMPLETE THE DNR MONUMENT PERMITTING PROCESS PRIOR TO CONSTRUCTION AND REPLACE THE MARK AT THE COMPLETION OF CONSTRUCTION

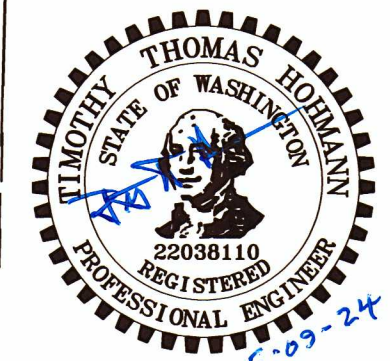
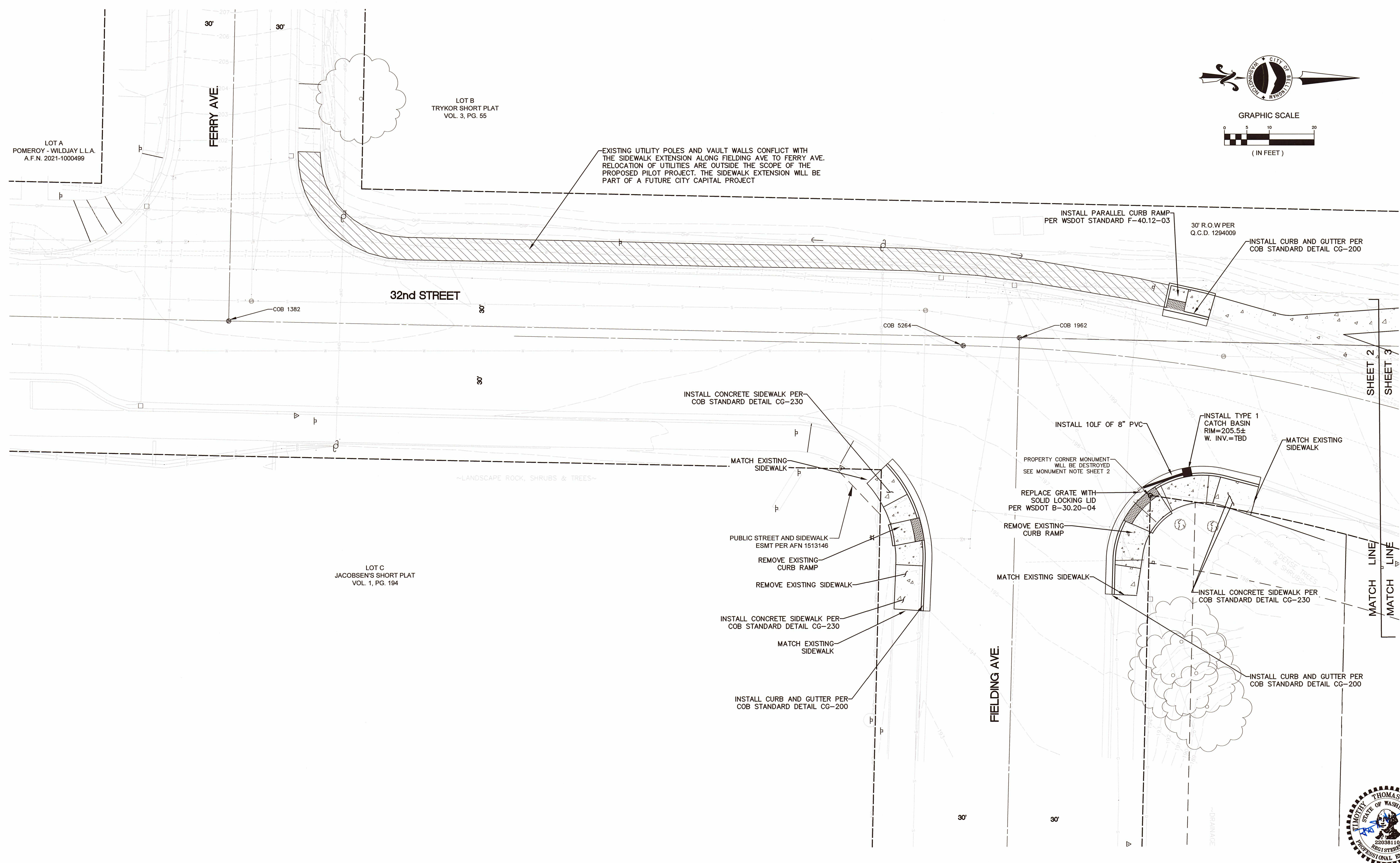
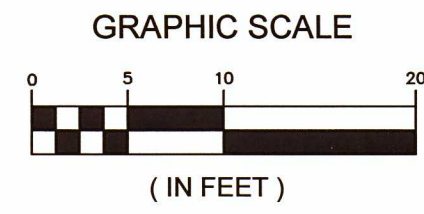
EXISTING UTILITY POLES AND VAULT WALLS CONFLICT WITH THE SIDEWALK EXTENSION ALONG FIELDING AVE TO FERRY AVE. RELOCATION OF UTILITIES ARE OUTSIDE THE SCOPE OF THE PROPOSED PILOT PROJECT. THE SIDEWALK EXTENSION WILL BE PART OF A FUTURE CITY CAPITAL PROJECT



LEGEND

EXISTING	PROPOSED	EXISTING
RIGHT OF WAY LINE	---	---
PROPERTY LINE	---	---
CENTER LINE	---	---
WATER MAIN	---	---
WATER SERVICE	---	---
WATER VALVE	⊙	⊙
FIRE HYDRANT	⊙	⊙
SANITARY SEWER MAIN	---	---
SANITARY SEWER SERVICE	---	---
STORM SEWER MAIN	---	---
STORM SEWER SERVICE	---	---
SEWER MANHOLE	⊙	⊙
STORM MANHOLE	⊙	⊙
CATCH BASIN	⊙	⊙
WHEELCHAIR RAMP	---	---
UTILITY POLE	⊙	⊙
SIDEWALK	---	---
CURB & GUTTER	---	---
PROPOSED SIDEWALK	---	---
PROPOSED TRUNCATED DOME	---	---
FUTURE SIDEWALK	---	---
GAS MAIN	---	---
GAS SERVICE	---	---
UNDERGROUND TELEPHONE	---	---
FIBER OPTIC LINE	---	---
EDGE OF PAVEMENT	---	---
EDGE OF GRAVEL/DIRT	---	---
OVERHEAD POWER	---	---
UNDERGROUND POWER	---	---
BUILDING LINE	---	---
TREE LINE	---	---
FENCE LINE	---	---
WALL LINE (ROCK)	---	---
WALL LINE	---	---
SHRUBS	---	---
TREES	---	---
STREET LIGHT JUNCTION BOX	---	---
TRAFFIC JUNCTION BOX	---	---
LUMINAIRE (STREET LIGHT)	---	---
SIGNAL POLE	---	---
MONUMENT	---	---
PROPERTY CORNER	---	---
CONTOUR EXISTING MAJOR	---	---
CONTOUR EXISTING MINOR	---	---

<table border="1"> <tr><td>4</td><td></td><td></td></tr> <tr><td>3</td><td></td><td></td></tr> <tr><td>2</td><td></td><td></td></tr> <tr><td>1</td><td></td><td></td></tr> <tr><td>Date</td><td>No</td><td>Revision</td></tr> </table>	4			3			2			1			Date	No	Revision	PROJECT ENGINEER <u>JAM</u> DESIGNED/DRAWN <u>JAM</u> INSPECTOR <u>TBD</u>	DIRECTOR PUBLIC WORKS <u>E.C.J.</u> CITY ENGINEER <u>M.L.W.</u> ASSISTANT DIRECTOR <u>M.A.O.</u>	CITY OF BELLINGHAM, WASHINGTON PUBLIC WORKS DEPARTMENT ENGINEERING DIVISION	SCALE Horiz. 1"=20' Vert. 1"=NA	DATUM NAD 83/98 NAVD 88	Job. No. <u>PILOT</u> Date <u>--</u> Field Bk. <u>--</u>	SITE IMPROVEMENTS 32ND ST. & ELWOOD AVE. IMPROVMENTS	SHEET 2 OF 5
4																							
3																							
2																							
1																							
Date	No	Revision																					



Date	No	Revision	By
	4		
	3		
	2		
	1		

PROJECT ENGINEER JAM
 DESIGNED/DRAWN JAM
 INSPECTOR TBD

DIRECTOR PUBLIC WORKS E.C.J.
 CITY ENGINEER M.L.W.
 ASSISTANT DIRECTOR M.A.O.

CITY OF BELLINGHAM, WASHINGTON
 PUBLIC WORKS DEPARTMENT
 ENGINEERING DIVISION

SCALE
 Horiz. 1"=10'
 Vert. 1"=NA

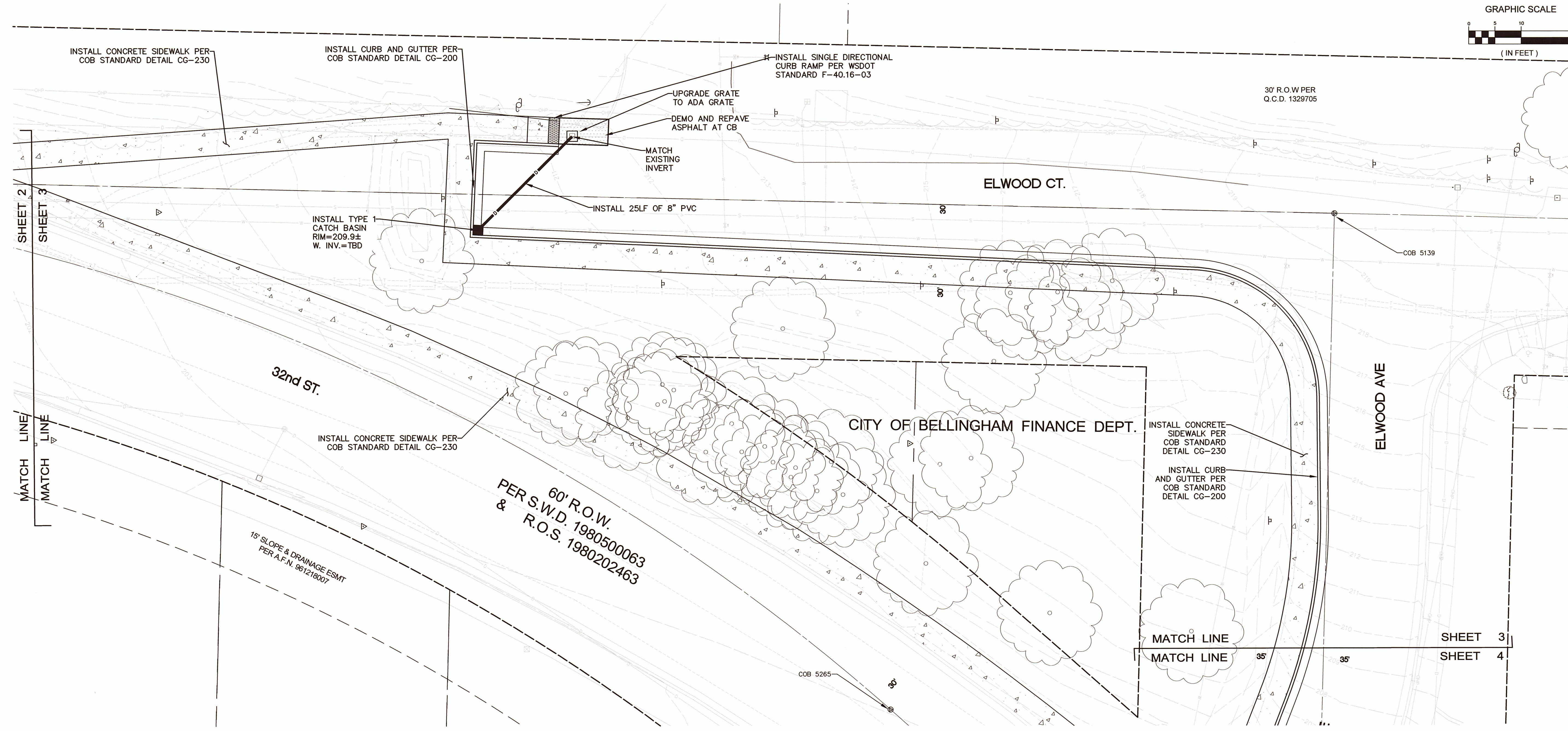
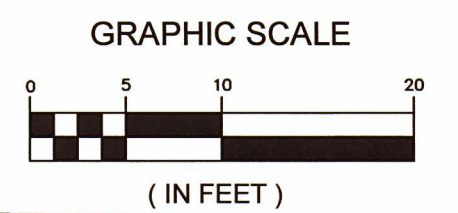
DATUM
 NAD 83/98
 NAVD 88

Job. No. PILOT
 Date --
 Field Bk. --

SITE IMPROVEMENTS
 32ND ST. & ELWOOD AVE. IMPROVMENTS

SHEET 3 OF 5

CONTACT PERSON: JOEY MALLOY, PROJECT ENGINEER AT 778-7909



4		
3		
2		
1		
Date	No	Revision

PROJECT ENGINEER	JAM
DESIGNED/DRAWN	JAM
INSPECTOR	TBD

DIRECTOR PUBLIC WORKS	E.C.J.
CITY ENGINEER	M.L.W.
ASSISTANT DIRECTOR	M.A.O.

CITY OF BELLINGHAM, WASHINGTON
PUBLIC WORKS DEPARTMENT
ENGINEERING DIVISION

SCALE
Horiz. 1"=10'
Vert. 1"=NA

DATUM
NAD 83/98
NAVD 88

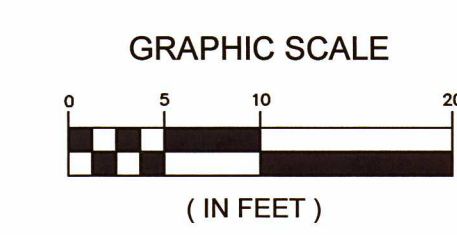
Job. No. PILOT
Date --
Field Bk. --

SITE IMPROVEMENTS
32ND ST. & ELWOOD AVE. IMPROVMENTS

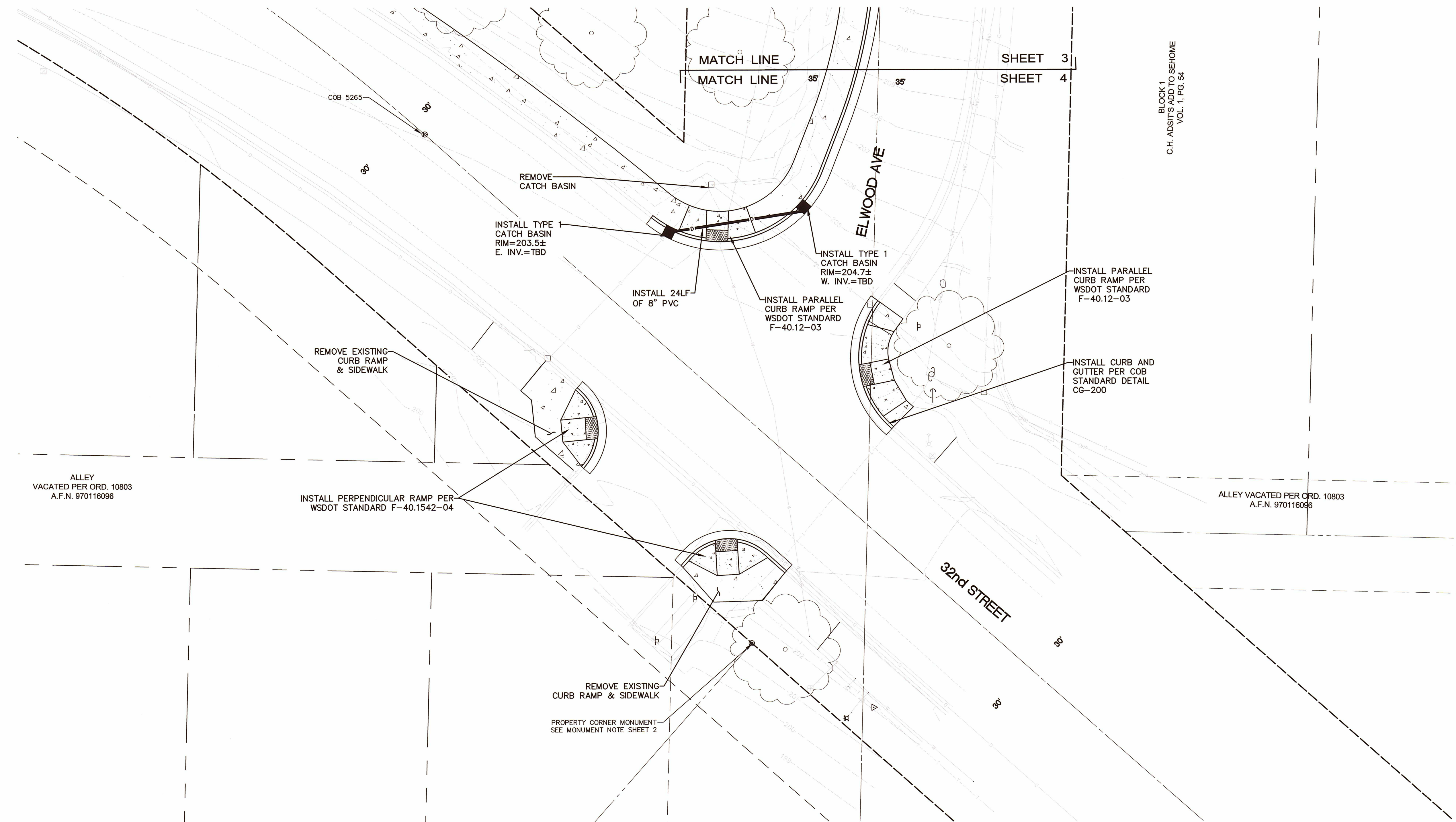
SHEET 4 OF 5

CONTACT PERSON: JOEY MALLOY PROJECT ENGINEER AT 778-7909





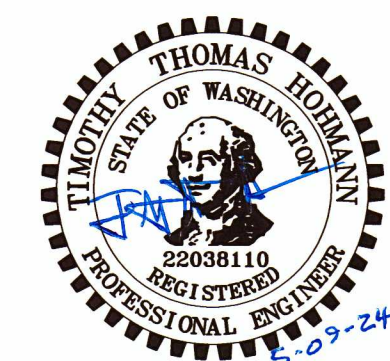
BLOCK 1
C.H. ADST'S ADD TO SEHOME
VOL. 1, PG. 54



MATCH LINE
MATCH LINE
SHEET 3
SHEET 4

ALLEY
VACATED PER ORD. 10803
A.F.N. 970116096

ALLEY VACATED PER ORD. 10803
A.F.N. 970116096



4		
3		
2		
1		
Date	No	Revision

PROJECT ENGINEER JAM
DESIGNED/DRAWN JAM
INSPECTOR TBD

DIRECTOR PUBLIC WORKS E.C.J.
CITY ENGINEER M.L.W.
ASSISTANT DIRECTOR M.A.O.

CITY OF BELLINGHAM, WASHINGTON
PUBLIC WORKS DEPARTMENT
ENGINEERING DIVISION

SCALE
Horiz. 1"=10'
Vert. 1"=NA

DATUM
NAD 83/98
NAVD 88

Job. No. PILOT
Date --
Field Bk. --

SITE IMPROVEMENTS
32ND ST. & ELWOOD AVE. IMPROVMENTS

SHEET 5 OF 5

CONTACT PERSON: JOEY MALLOY PROJECT ENGINEER AT 778-7909