

Analysis of a Delta hosting a Shell Midden

Diana Barg
Kim Owens

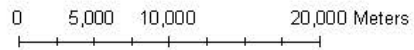
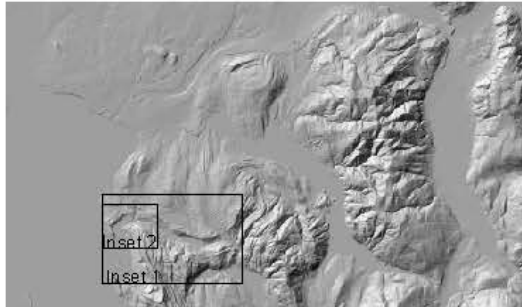


This photograph is of Chuckanut Bay in Bellingham, Washington. The maximum length of the bay from North to South is 628 m and from East to West 851 m.

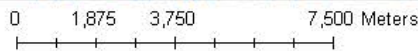
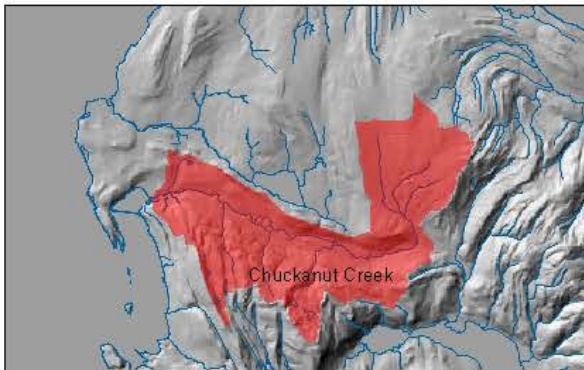


USDS 1976

Comparison of Woodstock Creek and Chuckanut Creek Watersheds



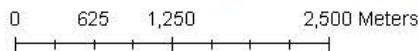
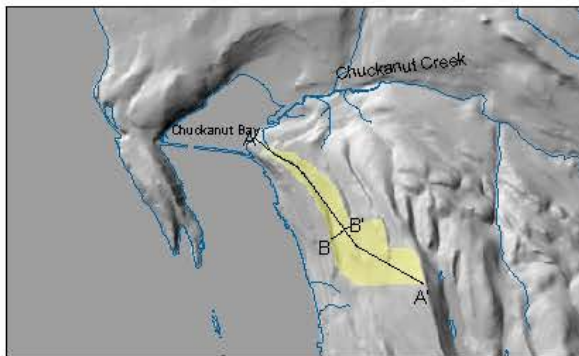
Inset 1: Chuckanut Creek Watershed



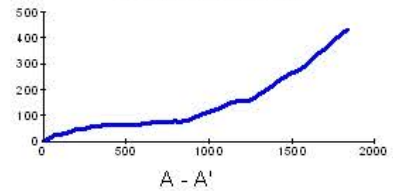
The area of Chuckanut Creek Watershed is 188,801 meters squared.

The area of Woodstock Creek Watershed is 4,210 meters squared

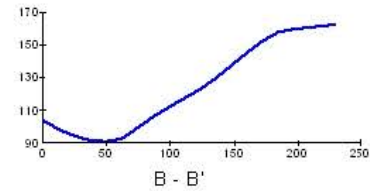
Inset 2: Woodstock Creek Watershed



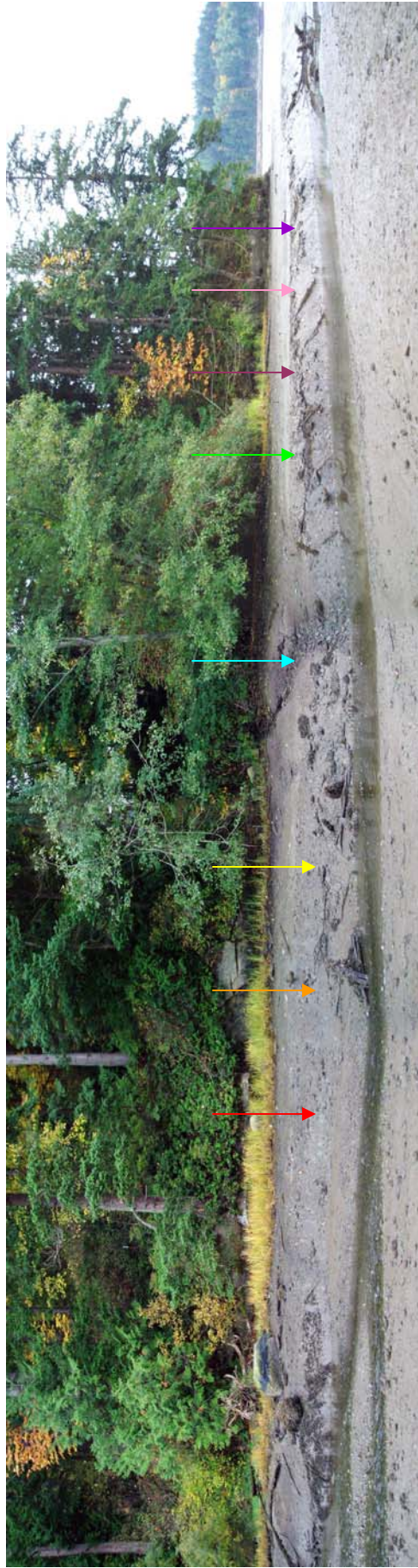
Woodstock Creek Watershed Gradient in meters



Woodstock Creek Watershed Profile in meters



Map produced by Kim Owens



This is a picture of the site containing the shell midden which roughly stretches from the large rock on the left of the picture to the wood stump on the right side of the picture. It covers a distance of roughly 45 metres.

Legend

Column 7

Column 2

Column 1

Column 3

Column 6

Column 4

Woodstock

Creek

Column 5



This image shows the placement of Chuckanut Creek in 1947.



This image shows the placement of Chuckanut Creek in 1979.