

# BULK WATER INFO



24/7 access to non-potable  
water for construction &  
irrigation purposes



## GET STARTED



Contact a Public Works  
Cross Connection Control  
Specialist:  
(360) 778-7700



Set up your bulk water  
account:  
[cob.org/water-withdraw-  
permit-application.pdf](http://cob.org/water-withdraw-permit-application.pdf)



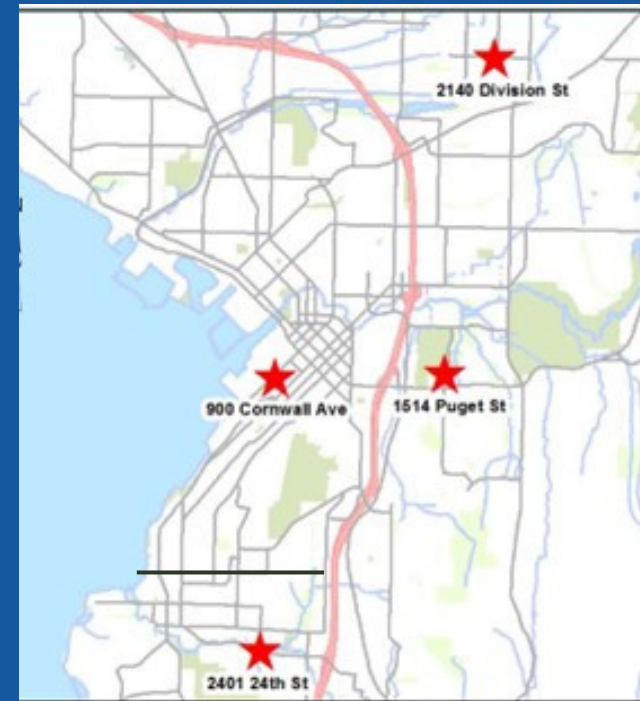
Schedule and complete a  
training session & vehicle  
inspection:  
(360) 778-7700



Receive your user account  
access and PIN and a copy  
of your completed  
application.

## LOCATIONS

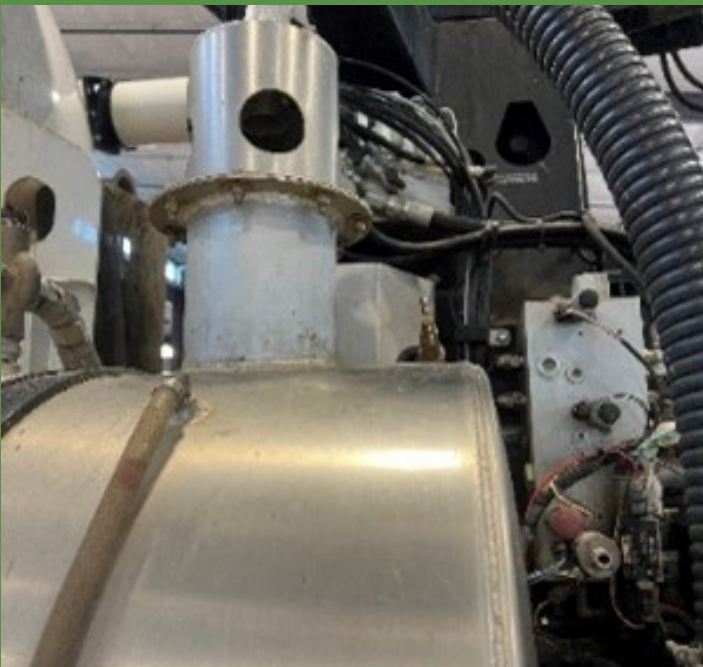
- 2140 Division Street, located in the Irongate Business Park
- 1514 Puget Street, adjacent to the Civic Field parking lot
- 900 Cornwall Ave, across the street from PSE Encogen Plant
- 2401 24th St., on the Northeast corner of Donovan and 24th



# BULK WATER

---

The City offers bulk water to our customers for use at construction sites, hydro excavation, or as a portable water source for pressure washing, irrigation, dust control, and more.



# BILLING

---

- Customers will be billed monthly if water is used.
- Your first water bill will include a \$25 activation fee.
- Rates can be found online: [cob.org/bill-payment](http://cob.org/bill-payment).
- Delinquent bills will receive a \$25 shut-off and \$25 reactivation fee.
- Customers in this water rate class will be charged based on volume only. No base charge will apply.
- The volumetric rate will be the same as for the irrigation only customers.

## QUESTIONS?

 360-778-7700

 [askpw@cob.org](mailto:askpw@cob.org)

# CONNECTING

---

How do I connect my equipment to a bulk water withdrawal station?

- Approved Air Gap- An approved air gap protects the City of Bellingham's water system from foreign contaminants by preventing backflow.
- This Air Gap must be twice the diameter of the supply piping measured vertically from the outflow of the receiving vessel, and in no case be less than one inch, when unaffected by vertical surfaces (sidewalls).
- 2.5" Female NH- Our bulk water withdrawal stations each have a 2.5" Male NH threaded connection.
- We recommend a 25' firehose hose for filling.

