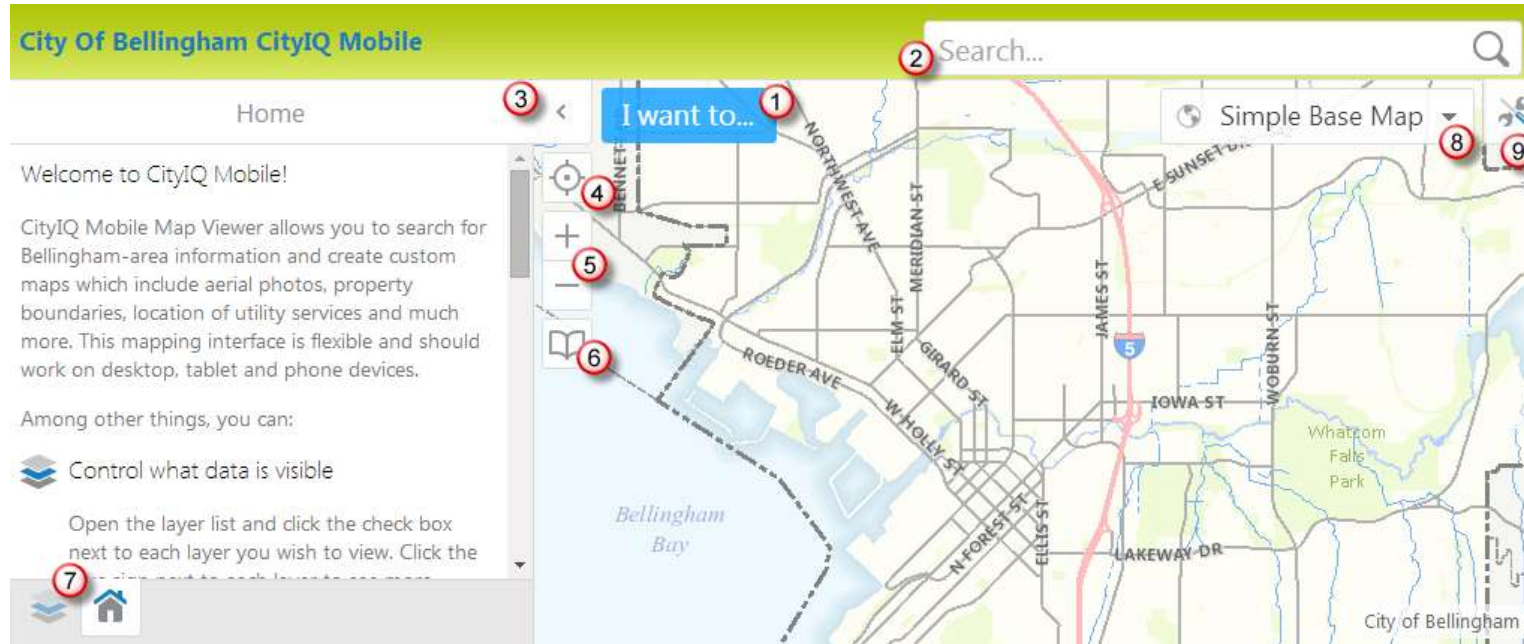


CITYIQ - Quick Help Guide

CityIQ web mapping application is available at <http://www.iqmap.org/gc/Html5Viewer/?viewer=cityiq>

If you have feedback please send your comments to: cityiq@cob.org



Use the numbers above to orient yourself to the mapping application open in the web browser window.

1	The I Want To... menu is your primary toolset for selecting items on the map or running reports. Usually, you will want to start here.
2	Type any search criteria to search all GIS data. You can search on owner names, addresses, landmarks, or identification numbers.
3	Move the home panel out of the way to view the entire map by clicking on the small left facing arrow. Click again to view again.
4	Use the "Locate Me" button to zoom the map to your current location. This works best on mobile devices with GPS enabled.
5	Use the + and - buttons to zoom in or out. Additionally, on mobile devices you can pinch and zoom; desktop computers use the mouse wheel scroll.
6	Bookmark button - quickly navigate to specific areas, set your own as needed.
7	Layers button - tap here to view layers and turn layers on and off. Be sure to turn on the parent layer of any nested layer below to view.
8	Base Map picker - Choose alternate basemaps for additional information including aerials and terrain. Choose the Simple Base Map to return.
9	Additional tools - Find additional tools on the tabs including measure and markup tools.