

Community Park at Cordata Phase One City Council Meeting

north



City of
Bellingham
WASHINGTON

December 20, 2017

Meeting 01 Agenda

- Introductions
- Schedule
- Project status
- Public outreach
- Master plan review
- Phase 1 review
- Discussion
- Park name
- Next Task

Project Status - Schedule

Task Name	Duration	Start	Finish
Design Phase	466 days	10/11/17	8/9/19
Artwork Related	549 days	8/23/17	10/16/19
Permitting	228 days	12/5/17	10/25/18
Float	24 days	10/23/18	11/28/18
Bid Phase	68 days	11/29/18	3/8/19
Float	38 days	3/11/19	5/1/19
Construction Phase	120 days	5/1/19	10/15/19

Your schedules are detailed.

Project Status - Budget

- Phase One Total \$8,730,000
1% 4 Art \$87,000
- Phase Two Total \$4,134,138

Project Meetings/Events

May 2016	Park Committee Meeting #1
July 2016	Concept Plans Phase Public Meeting #1
October 2016	Park Committee Meeting #2
October 2016	Preferred Concept Plan Public Meeting #2
January 2016	Park Committee Meeting #3
January 2017	Final Park Master Plan Public Meeting #3
February 2017	Cordata Design Review Committee #1
May 2017	Park Committee Meeting #4 (Phasing Plan)
May 2017	Planning Commission (Rezone)
June 2017	Cordata Neighborhood Association Board – Wetland A
June 2017	Parks/Rec Advisory Board review
July 2017	City Council Comprehensive Plan Amend't & Master Plan adoption Rezone Park #1
August 2017	Cordata Design Review Committee #2
Sept 2017	City Council Master Plan adoption #2
Sept 2017	Bellingham Arts Commission – began 1% for art process
In progress	Acquire wetland A parcel
Design	2017-2018
Bid	2019
Construction	2019

Other forms of public outreach

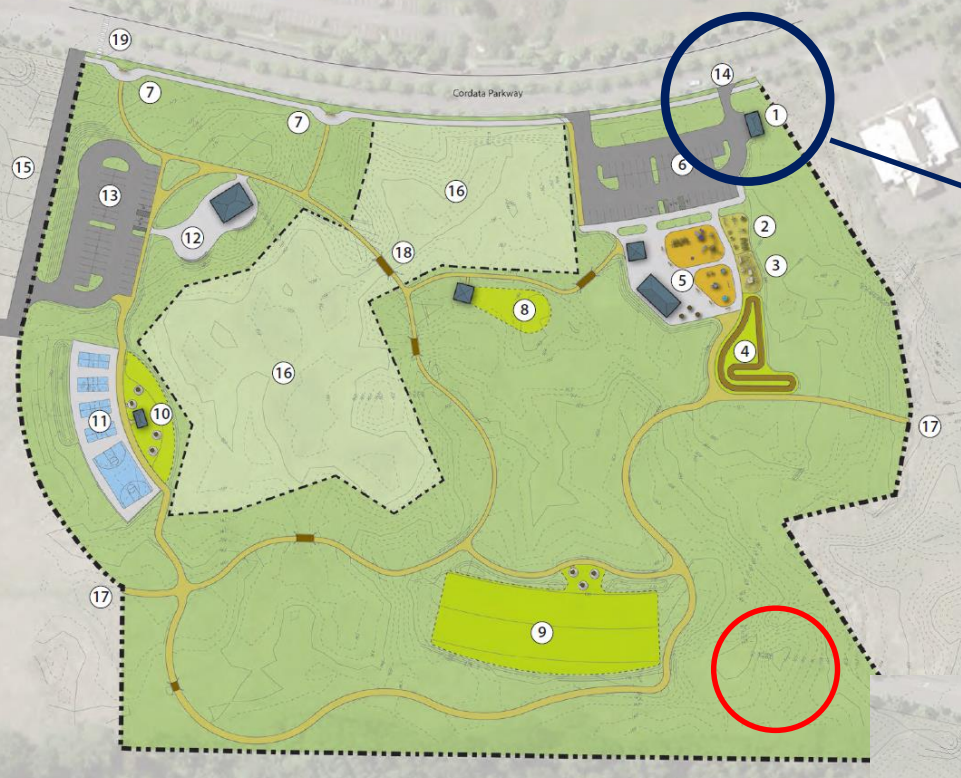
- (3) Park committee meetings – plugging into your organizations
- (3) Public meetings
- Periodic Facebook postings (to date, we had a reach of approximately 9,400, 532 clicks and 126 comments/shares/reactions.)
- City project web page
- Press releases – TV, radio, newspapers, other periodicals
- Posting project updates at the Community Food Coop
- Input forms
- Outreach to Meridian School District*
- Outreach to Bellingham School District*
- Bellingham Housing Authority*
- Outreach to Cordata E.S. – connection to families
- On site posting meeting notices
- E-mail list (about 117 e-mails)
- Mailers to land owners

Project Status - Context

- Changes since the last time we met
- Transportation Planning & street crossings
- Cordata Design Review Committee requirements
- 1% for Art



**Spray park, playground, parkour, adult exercise, bike park, fun

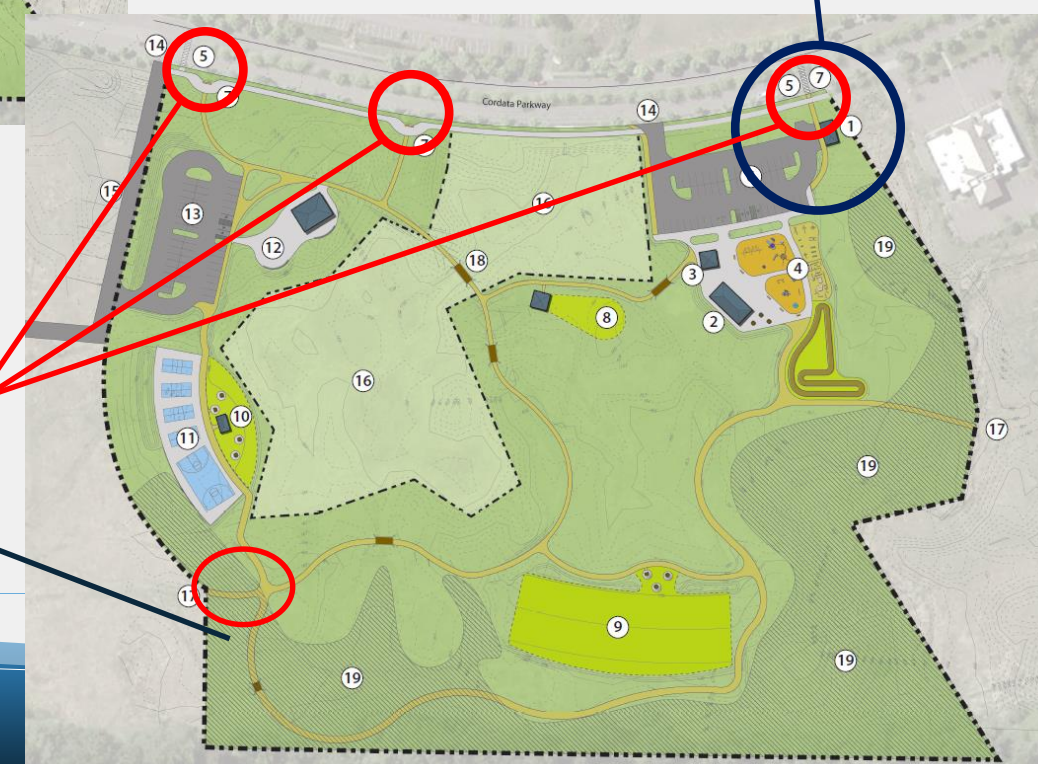


- Deleted maintenance access drive
- Pedestrian cross walk and gateway added

Plan Edits since July 2017

Added opportunities for public art

Added mitigation zone



Activating the Street Edge.....
Three opportunities for artwork, gathering, fun
and other things along Cordata Parkway



Enhanced Pedestrian Access - Example - Gate of Rushes



Legend

- ① Parks Ops Maintenance Building
- ② Parkour Course
- ③ Pump Track
- ④ Skate Dot
- ⑤ 2-5 Play Area
- ⑥ Swing Area
- ⑦ Diggables Area
- ⑧ 5-12 Play Area
- ⑨ Spin Zone
- ⑩ Restroom and Splash Pad Pump Building
- ⑪ Splash Pad
- ⑫ Picnic Shelter w/ Community Sink and BBQ Grill
- ⑬ Parking- 74 spaces including 4 Accessible Spaces
- ⑭ Bus Parking
- ⑮ Critical Area Bridge Crossings
- ⑯ Enhanced Pedestrian Park Access
- ⑰ RFBB Crossing Signal at Pedestrian Crosswalk
- ⑱ Open Playfield w/ Picnic Area



SCALE 1"=50'
0 50' 100'

Cordata Community Park Phase 1 Site Plan

City of Bellingham Parks and Recreation

Robert W. Droll Landscape Architect, PS | December 20, 2017



Legend

- ① Parks Ops Maintenance Building.
- ② Parkour Course
- ③ Pump Track
- ④ Skate Dot
- ⑤ 2-5 Play Area
- ⑥ Swing Area
- ⑦ Diggables Area
- ⑧ 5-12 Play Area
- ⑨ Spin Zone
- ⑩ Restroom and Splash Pad Pump Building
- ⑪ Splash Pad
- ⑫ Picnic Shelter w/ Community Sink and BBQ Grill
- ⑬ Parking- 74 spaces including 4 Accessible Spaces
- ⑭ Bus Parking
- ⑮ Critical Area Bridge Crossings
- ⑯ Enhanced Pedestrian Park Access
- ⑰ RFBB Crossing Signal at Pedestrian Crosswalk



Cordata Community Park Schematic Park Core Plan

City of Bellingham Parks and Recreation

Robert W. Droll Landscape Architect, PS | December 20, 2017

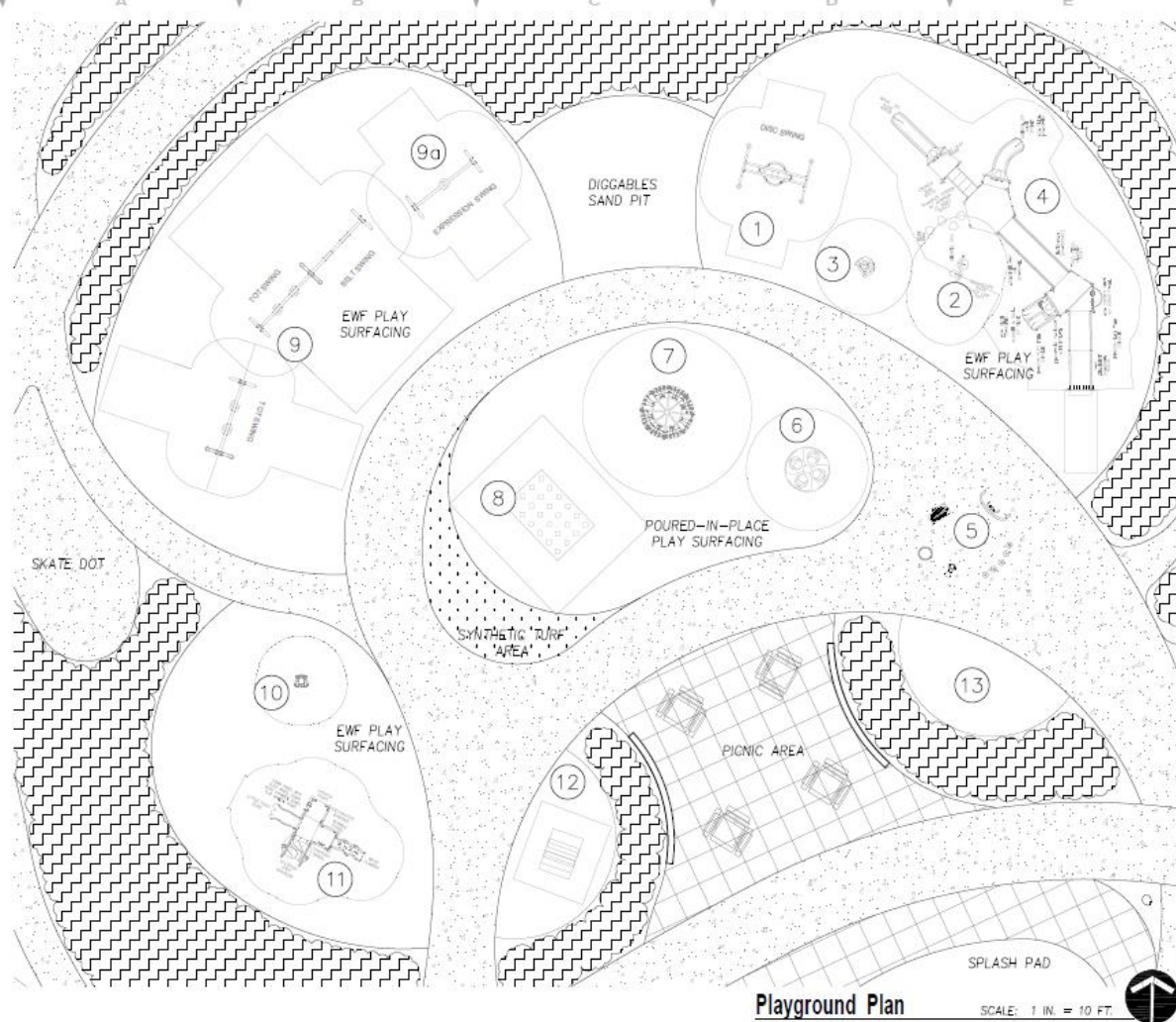


Cordata Community Park Enhanced Pedestrian Entrance

Scale: 1"=10'

City of Bellingham Parks and Recreation

Robert W. Droll Landscape Architect, PS | December 20, 2017



1 GAMETIME OODLE SWING



3 COZY COCOON SPINNER — PROVIDES COZY SPACE TO REDUCE OVERSTIMULATION



5 MUSICAL INSTRUMENTS: DRUMS, LARGE CHIMES, AND METALLOPHONE — INSTRUMENTS SET SO PLAYERS ARE FACING ONE ANOTHER.



7 LANDSCAPE STRUCTURES GLOBAL MOTION SPINNER



2 GAMETIME STEP ROCK LINK



4 GAMETIME ADVOCATE 5-12 YR. INCLUSIVE PLAY STRUCTURE



6 GAMETIME MERRY-GO-ALL INCLUSIVE GROUND-LEVEL SPINNER



8 OUTDOOR TWISTER GAME INSTALLED ON POURED-IN-PLACE SURFACING



9 10 FT. TALL SWINGS



9a EXPRESSION SWING—ADULT/CHILD COMBINATION SEATING



10 GAMETIME INCLUSIVE SENSORY WAVE SPINNER SEAT



11 GAMETIME TODDLER 5, 2-5 YR. OLD STRUCTURE



12 HONEYBEE INTERPRETIVE AREA WITH BEE SCULPTURE AND HONEYCOMB CLIMBERS



13 WETLAND CRITTERS PLAYGROUND MAZE



November 22, 2017

COMMUNITY PARK AT CORDATA PLAYGROUND EQUIPMENT SURVEY

What are your three favorite playgrounds? If they aren't in Bellingham, where are they located?
 Why do you like them?

Rate each playground equipment below on a scale from one to ten
 (One means "m'eh" and Ten means you love it).

To-fro swing	Straight slide
Tire swing	Curt slide
Climbers – climb on and off equipment, across, shapes/sizes vary	Tube slide
Roller slide	Tall slide
Climbing Boulders	Net climber – different shapes and sizes
Loose plank bridge	Swaying bridge
Net Bridge	Rope bridge
Log roll	See-saw (Teeter-Totter)
Spring board – Spring board bounce	Track ride – Hang and hold on while sliding to the other side
Balance beam – Tight rope	Hang out– Nook, hammock, seat
Spinners – They go around fast	Crawl Tube
Spring Toys – Different shapes and sizes	Music-Horn
Hop scotch	Music-Chimes
Fire pole	Music-Drums
Talk tubes	Music – Xylophone
Puzzle panels	Nature Sounds
Sand play - digging	Jungle gym - Climbing
Jumpy button – each step a bounce	Sideways climber
Penny twirl – level bars to twirl on	Merry-go-round

What playground equipment or themes do you like that isn't listed above?

Thank you for taking this survey. Please return it to:
 Bellingham Parks and Recreation 210 Lottie Street Bellingham, WA 98225
 You can tell us more what you think at parks@cob.org or 360-778-7000
 Jonathan Schilk, Landscape Architect, City of Bellingham Parks and Recreation Dept.

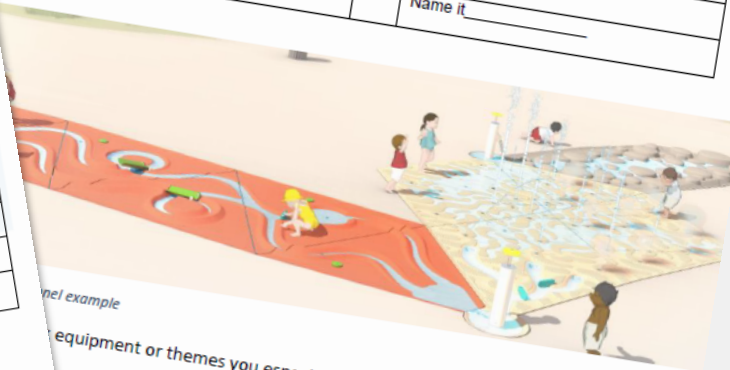


November 22, 2017

COMMUNITY PARK AT CORDATA SPRAY PARK SURVEY

Rate each playground equipment below on a scale from one to ten
 (One means "m'eh" and ten means you love it).

Misting nozzles	Animal theme
Gushing nozzles	Urban theme
Shooting stream nozzles	Water related animal theme
Water dumpers	Ocean theme
Geyser	Tropic theme
Dancing water jets	Water mine
Water channels with dams that open and shut (see below)	Water bugs
Turtles	Sea serpent
Cattails	Fish
Sunken vessels (like pirate ships)	Name it _____



See example

equipment or themes you especially like not listed above?

Thank you for taking this survey. Please return it to:
 Bellingham Parks and Recreation 210 Lottie Street Bellingham, WA 98225
 You can tell us more what you think at parks@cob.org or call us 360-778-7000
 Jonathan Schilk, Landscape Architect, City of Bellingham Parks and Recreation Dept.

Playground Equipment Rating-->	LOW PREFERENCE			MEDIUM PREFERENCE				HIGH PREFERENCE			Columns (8-10)-(1-7)	
	1	2	3	4	5	6	7	8	9	10	Ratings 2	Ranking2
<u>Spring board</u>	2	0	1	0	1	1	3	6	8	23	29	1
<u>Tall slide</u>	1	3	0	1	3	1	2	2	4	30	25	2
<u>Hang out nook</u>	4	0	0	0	1	3	1	2	3	27	23	3
<u>Track ride</u>	3	0	0	1	0	3	4	1	2	30	22	4
<u>Merry go round</u>	3	0	0	0	1	3	4	4	3	25	21	5
<u>Jumpy button</u>	3	0	0	0	3	0	2	4	6	19	21	5
<u>Spinners</u>	3	1	0	2	3	2	2	2	3	27	19	7
<u>Jungle gym</u>	4	0	2	1	3	3	1	2	4	26	18	8
<u>Net climber</u>	1	1	0	1	2	2	5	2	4	22	16	9
<u>Penny twirl</u>	2	3	2	0	1	2	2	2	4	21	15	10
Roller slide	1	0	1	0	5	1	4	2	0	23	13	11
Swaying bridge	4	1	0	0	4	3	1	5	3	18	13	11
Rope bridge	3	0	2	1	4	4	1	4	3	19	11	13
Tube slide	3	1	3	2	3	4	0	2	4	21	11	13
Balance beam	5	2	3	1	1	1	3	3	4	19	10	15
Climbers (assorted)	4	1	1	1	2	3	3	6	6	12	9	16
Loose plank bridge	4	1	0	2	2	5	3	7	9	9	8	17
Net bridge	2	0	4	1	1	3	5	4	3	17	8	17
Log roller	3	1	1	2	7	1	3	6	4	16	8	17
Curl slide	3	2	3	4	2	1	0	3	4	16	8	17
See-saw	2	3	4	0	2	4	4	4	5	17	7	21
Crawl tube	6	3	0	1	1	7	2	5	3	16	4	22
Sand play	4	2	3	1	4	3	1	2	3	15	2	23
Talk tube	5	2	2	0	2	4	4	6	1	13	1	24
To-fro swing	3	0	4	3	3	5	4	2	4	13	-3	25
Sideways climber	5	4	0	1	2	4	6	4	2	12	-4	26
Tire swing	3	3	1	2	3	3	6	1	4	12	-4	26
Fire pole	3	4	4	0	4	4	4	4	1	12	-6	28
Straight slide	10	0	1	1	1	5	2	5	4	4	-7	29
Climbing boulders	2	2	0	4	6	6	5	4	0	11	-10	30
Puzzle panels	12	2	1	1	0	5	2	1	2	8	-12	31
Music-horn	11	4	3	2	1	2	3	1	4	9	-12	31
Music-chimes	11	4	1	2	3	2	4	1	2	10	-14	33
Nature sounds	11	3	5	1	1	4	2	0	3	8	-16	34
Music drums	13	5	2	4	2	2	2	1	3	8	-18	35
Music-xylophone	11	6	2	2	3	4	2	2	1	8	-19	36
Hopscotch	12	4	3	2	3	5	0	1	2	5	-21	37

This rudimentary survey was designed to give the playground designers a general idea of what playgroud equipment is preferred by local school aged childre
 Each cell in the tabulation above contains the number of times students at Cordata Elementary School scored a particular piece of equipment 1, 2, 3, ..., to 1

Spray Park Equipment Survey Tabulation

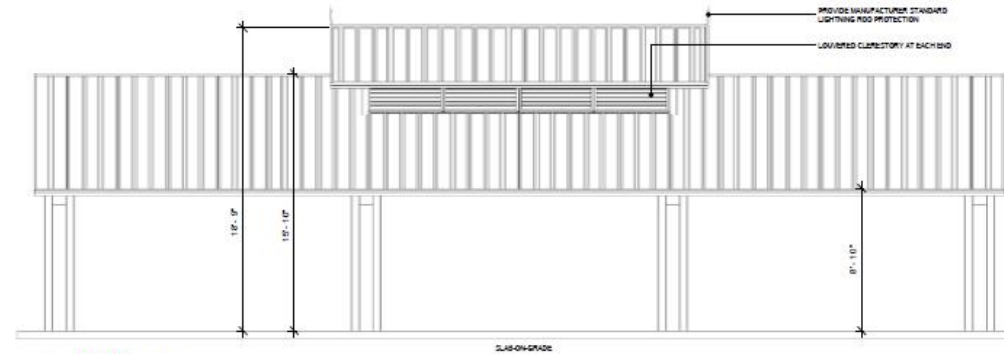
SPRAY PARK	LOW PREFERENCE			MEDIUM PREFERENCE				HIGH PREFERENCE			Rating	Ranking
	1	2	3	4	5	6	7	8	9	10		
Water dumpers	1	0	0	0	0	1	0	0	6	38	42	1
Dancing water jets	3	1	2	0	2	1	3	3	8	29	28	2
Water channels	2	1	1	0	4	1	0	2	3	32	28	2
Geyser	1	2	2	0	3	2	1	2	3	30	24	4
Shooting stream nozzle	1	0	1	2	2	0	3	3	3	25	22	5
Gushing nozzle	1	1	3	2	3	1	3	1	1	25	13	6
Misting nozzle	3	2	2	0	5	3	0	2	6	19	12	7
Turtles	7	1	1	1	5	5	2	3	4	26	11	8
Ocean theme	8	2	1	1	3	1	1	3	2	21	9	9
Sunken vessel - like aparate ship	8	0	2	1	2	3	1	3	3	19	8	10
Tropic theme	10	3	0	0	3	1	2	6	1	16	4	11
Animal theme	10	2	4	0	3	1	1	3	3	16	1	12
Cattails	7	1	1	0	5	6	3	2	3	18	0	13
Water bugs	9	1	0	2	1	4	5	2	2	16	-2	14
Fish	11	3	1	0	3	4	1	4	2	11	-6	15
Water related animal theme - like hippo, aligator, et	11	0	4	2	2	1	1	3	4	7	-7	16
Sea serpent	6	1	2	1	5	3	5	1	2	11	-9	17
Water mine	10	2	2	1	6	6	2	2	1	10	-16	18
Urban theme	13	4	2	2	4	3	0	2	1	5	-20	19

This rudimentary survey was designed to give the playground designers a general idea of what playground equipment is preferred by local school aged children. Each cell in the tabulation above contains the number of times students at Cordata Elementary School scored a particular piece of equipment 1, 2, 3, ..., to 10.

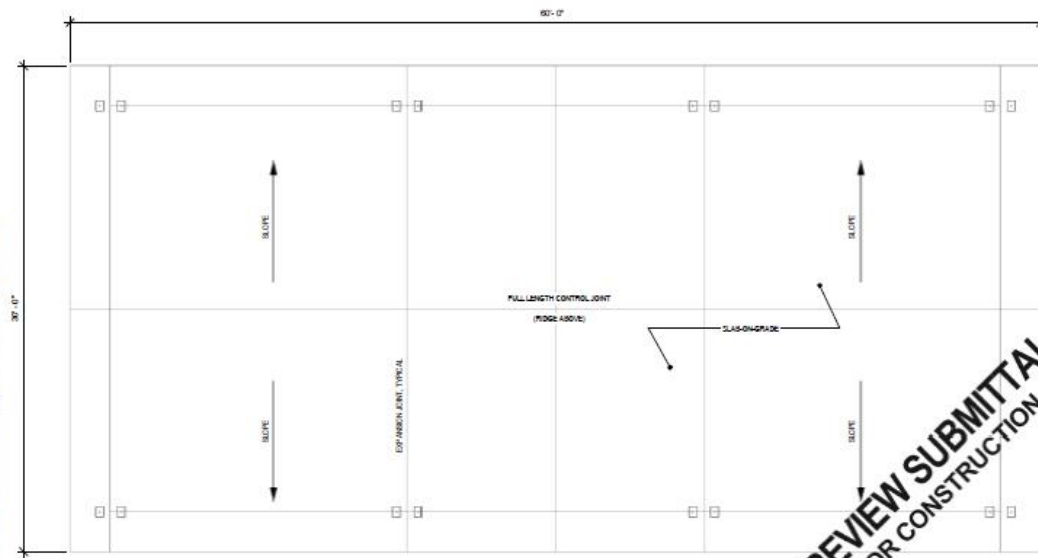


Polygon Shelter - Chelsea Model

- A. 30'X60' RECTANGLE WITH CLERESTORY GABLE ROOF.
- B. LOW-REVEAL CLERESTORY TO PREVENT WIND AND RAIN PENETRATION - CLERESTORY ELEMENT CAN BE CUSTOMIZED FOR CLOSER MATCH TO CONCEPT DRAWING.
- C. PROVIDE (8) PILOT ROCK "EXTRA HEAVY-DUTY" PICNIC TABLES. CONTRACTOR TO ANCHOR IN PLACE AFTER LOCATION DETERMINED BY OWNER.
- D. PROVIDE ACCESS TO POTABLE WATER AND ELECTRICITY BY USERS.
- E. PROVIDE (ONE) GROUP SIZE BBQ PIT.
- F. STANDING SEAM METAL ROOF WITH ENCLOSED SOFFITS. COLOR TO BE DETERMINED.

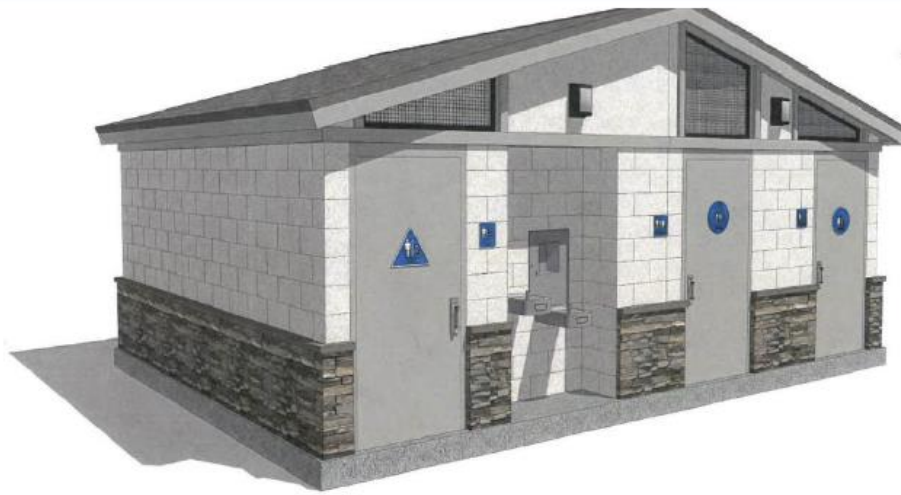


2 Side Elevation
1/4" = 1'-0"



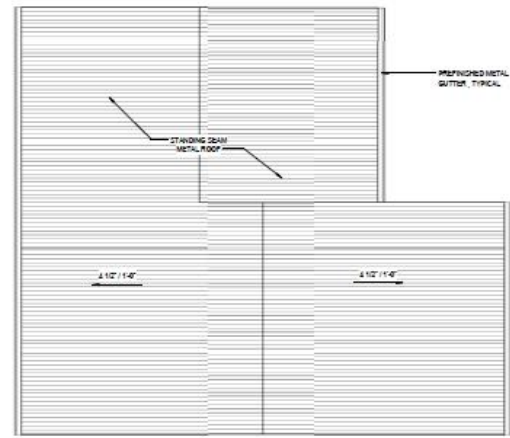
1 Floor Plan
1/4" = 1'-0"

30% REVIEW SUBMITTAL
NOT FOR CONSTRUCTION

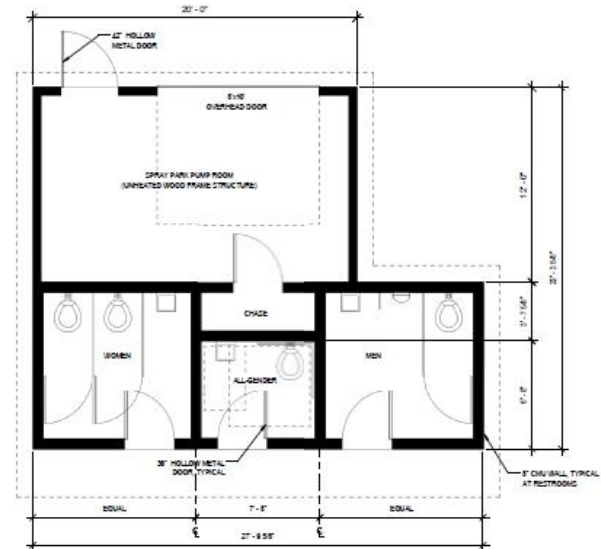


Rendering of Proposed Exterior

NO SCALE
NOTE: THIS RENDERING IS FOR ILLUSTRATIVE PURPOSES ONLY. NOT TO BE USED FOR DESIGN, PERMITTING, BIDDING, OR CONSTRUCTION.

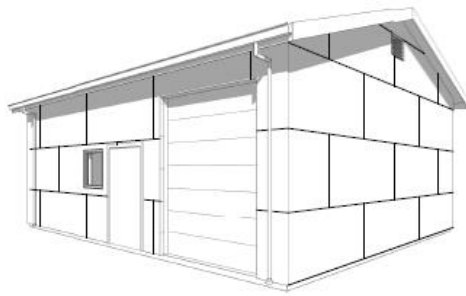


3 Roof Plan (All-Gender Option Sim.)
1/4" = 1'-0"

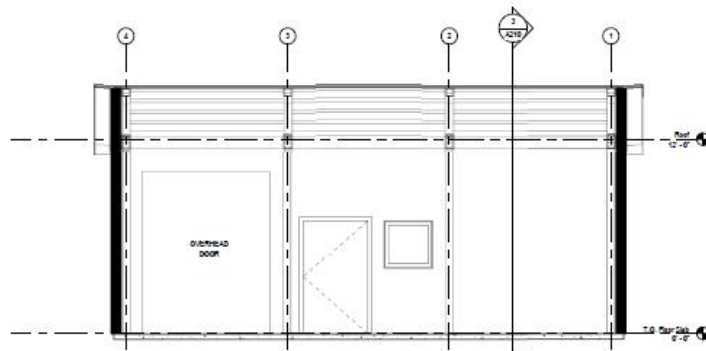


1 Women / All-Gender / Men Option - Concept Plan
1/4" = 1'-0"

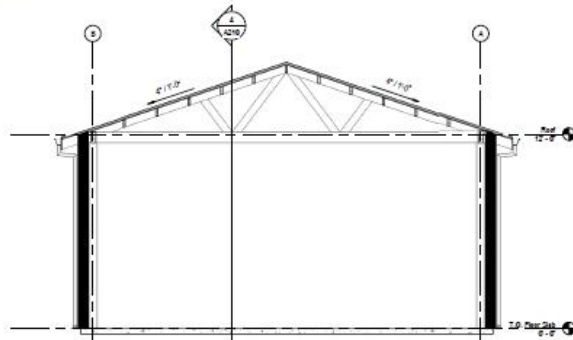
30% REVIEW SUBMITTAL
NOT FOR CONSTRUCTION



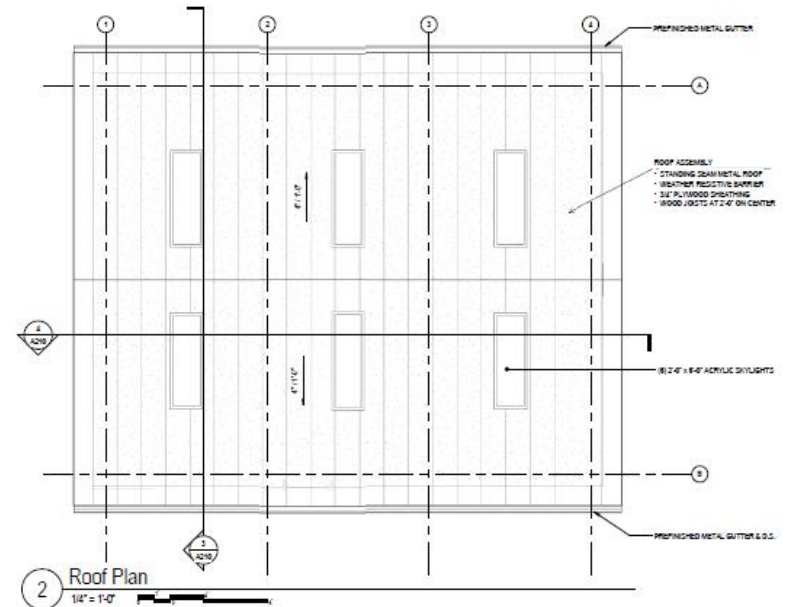
5 3D View



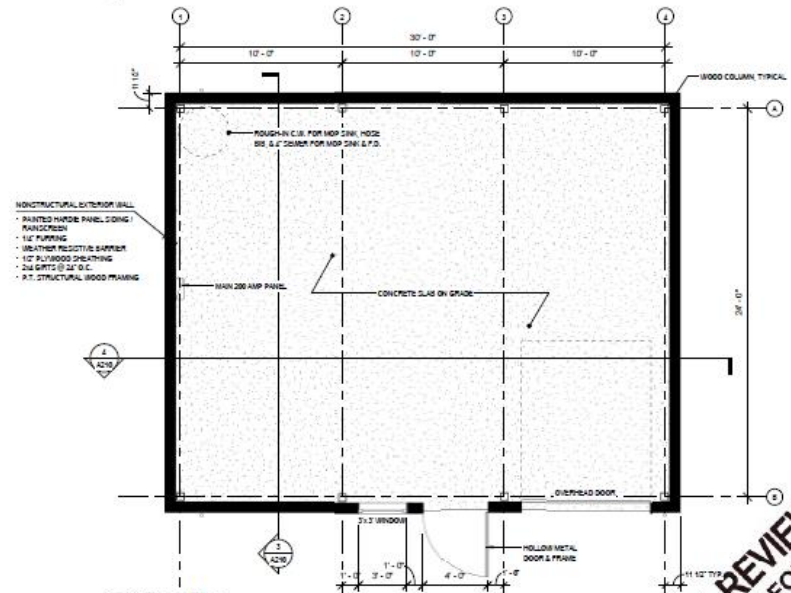
4 Building Section 2
1/4" = 1'-0"



3 Building Section 1
1/4" = 1'-0"



2 Roof Plan
1/4" = 1'-0"



1 Floor Plan
1/4" = 1'-0"

30% REVIEW SUBMITTAL
NOT FOR CONSTRUCTION

Option 1: Functional (\$80-90k)

Surface

Approximately 30% of the surface covered in budget PIP rubber or tile. The remaining area covered with a loose shredded rubber fill of decent quality.



Parkour Structures

Focused on bar structures, especially over shredded rubber area. Galvanized steel pipe, welded. Concrete shapes mostly simple and/or pre-cast. One complex focal piece like a climber.



Extras

Instructional signage. Some sort of main sign and/or entry arch.



underbar

- Swing quickly through tight spaces -

- Start by gripping the top bar with both hands. Step one foot onto the lower bar and swing your legs and hips through before your torso.
- Repeat this motion without touching the lower bar.
- Try performing this movement at a jog, jumping off the ground with one foot before you grab the bar.
- Think about keeping your feet high and throwing the bar behind you. Land softly and with control.

How many different underbars can you find in the park? (Not all of them are at ground level!)

For a video tutorial of this movement, scan this QR code or enter the URL.

Option 2: Advanced (\$135-145k)

Surface

Approximately 60% of the surface covered in budget PIP rubber or playground tile. The remaining area covered with a loose shredded rubber fill of decent quality.



Parkour Structures

Fewer bar-only structures. Bar structures gain more complexity and are powder coated instead of galvanized. More concrete structures and integration of bars and concrete. Mix of simple and complex concrete shapes, with larger structures possible. More curves and angles.



Extras

Instructional signage. Some sort of main sign and/or entry arch. Graphic elements and/or mounds integrated into rubber surfacing. Defined concrete border around the space (like a stepped low wall or railings). Possible small grade change within the park.



Option 3: Beautiful (\$175-185k)

Surface

Approximately 80% of the surface covered in high quality PIP rubber. Small shredded rubber section used for acrobatics landing pit.



Parkour Structures

Bar structures large, complex, powder coated. Connected flowing shapes cast in concrete intergated with the bars. Usable aesthetic designs (handholds, notches) laid into concrete. Everything generally nicer, more visually appealing.



Extras

Functional artistic piece as entry element. Grade changes and rubber ground forms integrate with parkour structures. In-ground trampoline(s).



COMMUNITY PARK at CORDATA

Thank You for Listening. Questions?

Presented by: Jonathan Schilk and Don Campbell
Parks Design and Development Division
(360) 778 – 7000 noliver@cob.org

<https://www.cob.org/services>