

CABINET

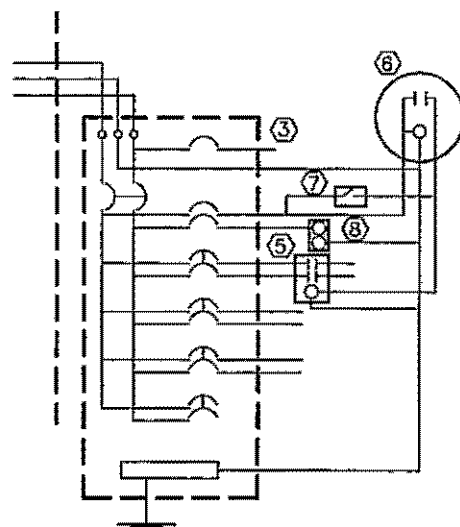
NEMA 3R, PAD
MOUNT 1/8" BARE
ALUMINUM

DOORS

CONCEALED HINGE LIFT OFF TYPE 3
POINT LATCH WITH PADLOCKABLE HANDLE
CLOSED CELL NEOPRENE GASKET
POLISHED WIRE GLASS WINDOW ON DOOR

COMPONENT SCHEDULE

- ①
- ②
- ③ SIGNAL BREAKER, 50A, 1 PHASE, WESTINGHOUSE #QC1050 OR
- ④ EQUAL PANELBOARD, 120/240 V, 1 Ø, 3 WIRE, 100 A MAIN
BRANCH BREAKERS;
15A 1 PHASE CONTROL
20A 1 PHASE RECEPTACLE
40A 2 PHASE LIGHTING
- ⑤ CONTACTOR, 60A, 2P, 600V, 120 V COIL
- ⑥ PHOTO CELL, PRECISION #LC4536LA TEST
- ⑦ SWITCH, 120 V 10 A, SPST GROUND
- ⑧ FAULT RECEPTACLE, 120 V, 20 A



WIRING SCHEMATIC

NOTES:

1. SIZE AND QUANTITY OF BREAKERS AND CONTACTORS TO BE DETERMINED BY JOB.
2. PHOTO CELL SHALL BE MOUNTED ON TOP OF CABINET WITH A WIRE MESH CAGE COVERING THE EYE. THE CAGE SHALL BE CONSTRUCTED WITH A ½" ROUND STOCK FRAME COVERED IN STEEL MESH. CAGE SHALL THEN BE HOT-DIP GALVANIZED.

APPROVED

Rory J. Poulth
City Engineer

11/29/04
Date

CITY OF BELLINGHAM
CONTACTOR AND
SERVICE CABINET

DRAWING
EL-444