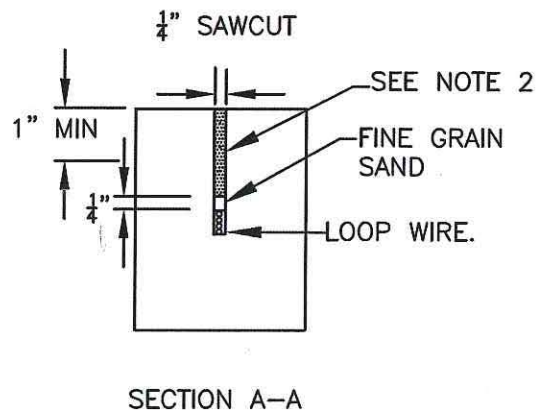
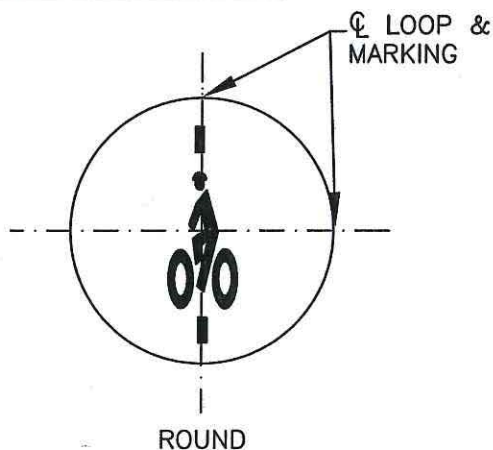


STANDARD LOOP SPACING



NOTES:

BICYCLE QUADRIPOLE

1. SEE COB STANDARD PLAN TC-317 FOR BICYCLE DETECTOR PAVEMENT MARKER DETAIL.
2. FILL CUT AFTER VERTICLE PLACEMENT AND TESTING WITH HOT PAVING GRADE LIQUID ASPHALT ASTM D 312 TYPE III OR QUICK SETTING HIGH STRENGTH GROUT.
3. WHEN PLACING BICYCLE DETECTOR MARKING OVER EXISTING TYPE 1 LOOPS, IT SHALL BE PLACED IN THE CENTER OF THE LANE 10' BEHIND THE STOP BAR.

N.T.S.

APPROVED

City Engineer

5/5/15

Date

CITY OF BELLINGHAM
BICYCLE DETECTOR PAVEMENT
MARKING LOCATIONS ON
DETECTOR LOOPS

DRAWING

EL-464