

City of Bellingham  
Parks & Recreation  
Cordata Community Park – Steering Committee Meeting #1  
1730 - 1930 (local time)  
05/18/16

- *Comments in red indicate results of discussions at Public Meeting #1.*

Notes and Comments from the Meeting Recorded By RWD/JAZ

1. PARK CHARACTER

Group seemed to reach consensus on the Character as follows:

- Maintaining openness is the defining goal. Public Agreed*
- Acquiring the central wetland (not part of the property) a priority! Jewel of the Park.*
  - Duck Blind, Bird watching, minimize number of owners involved. Public Agreed**Update: City is acquiring the wetland.*
- Develop the park in a manner which maintains the rolling, meadow character. **Public Agreed**
- Maintain open views – do not plant a forest. **Public Agreed – agreed to take concerns to the City if forested wetland buffers are required.**
- Keep open lines of sight to discourage unwanted camping. **Public Agreed**
- Develop property edges in a way which maintains the open character but screens adjacent uses.
- Wetlands are important, but kids and park users are too! Find the balance! Let's not make this a wetland park. **Public Agreed -**
- Create a unique set of elements that sets the park apart from other city parks—create a destination.

2. MISCELLANEOUS PARK DISCUSSION

- Forested wetlands to the east and conservation easement to the north will help buffer the park.
- More development than just a natural wetland park character – growing demographic in the area.
- Create a name change to remove confusion over Cordata Neighborhood Park.
  - Name change can only go through the City Council.
- Lighting – low trail lights, make all lighting visually unobtrusive. Public Agreed – no tall lighting.**
- Keep parking near the entrances so lights will blend with adjacent development, easier to police.
- Develop a younger constituency. Most public meeting attendees over 55, may not reflect the overall community user demographic. Get the kids involved during the public meetings.
- Find out what the younger users want – school age, college students from WCC. Public Meeting had advocates for youth, discussed youth opportunities, discussed having a youth-oriented area with multiple, clustered elements.**
- Park will be used by WCC students as well as neighborhood and community residents.
- Bike racks are important.

j. PARK PROGRAM ELEMENTS DISCUSSION

Group seemed to reach consensus on the park development items as follows:

- Trails
  - Make the park walkable for all ages. **Public Agreed**
  - Provide multi-modal access, especially pedestrian and bicycle. **Public Agreed**
  - Loop trails with internal connections are important to provide variety of experiences.
  - Trails should be accessible – may provide mix of hard surface and aggregate – area has a large number of wheelchair users and users with walkers due to adjacent medical facilities and also high percentage of over 55 area residents. **Public Agreed**

City of Bellingham  
Parks & Recreation  
Cordata Community Park – Steering Committee Meeting #1  
1730 - 1930 (local time)  
05/18/16

- Trails should connect with trails and walks from Cordata area developments. **Public Agreed**
- Provide diverse trail experiences. **Public Agreed**
- Use COB wayfinding signage to link neighborhood and community destinations to Cordata Community Park.
- Distance markers wanted. **Public Agreed**

b. Dog Off-Leash Area

- DOLA could be good use if adequate space is provided – do not make it too small.
- DOLA will bring more people in to the park **Concerned about size.**
- Is a DOLA a priority for this park? Committee opinion was mixed. Community vs. Neighborhood users may differ. **Public opinion was mixed.**
- May consider DOLA moving to another location if development restrictions limit size.
- Don't limit the size and locations of other public use areas just to have a DOLA.  
**Public Agreed**
- Look at moving DOLA to Cordata Neighborhood Park? Better fit due to more space?
  - Cordata Neighborhood Park feels too isolated; the problem will probably go away once Horton is constructed. **Public Divided on DOLA, consider moving it to the Cordata Neighborhood Park as an alternative.**
- The south end of the site may not be suitable for a DOLA due to adjacent property being zoned single-family residential – *avoid potential conflict.* **Public Agreed – located at north end.**

c. Playground / Play Areas

- Consider play area which does not physically separate age groups. **Public Agreed**
- Be sure to consider many parents have more than one child – design to allow them to easily monitor them. **Locate adult exercise area / Parkour adjacent, allows observation and also opportunity to have parents include children in the Parkour area.**
- Unique elements that set the playground apart from other playgrounds: consider musical elements, natural play elements, etc. **Public Agreed on concept, but detail design will wait until later in the design process.**

d. Miscellaneous Park Program Elements

- Provide inclement weather shelters along the trails to provide temporary shelter. Public Agreed
- Consider a skate dot, but keep it for small kids – not a skate park. **Public Agreed**
- Disc Golf – is it suitable for this park? Space, wear and tear on turf / ground area. **Not discussed, but will be an item on the Agenda for Public Meeting #2.**
- Gazebo at north end: music, activity, gathering spot. north end car access limited function intersection. **Public Agreed – gazebo that functions as stage with open grass, “amphitheater”, music /movies in the park.**
- Spray park or splash pad? **Public Agreed – small one, but parking is a concern.**
- Adult exercise area? Concentrated or spread out along a trail? What would it look like? No one had a strong opinion either way. **Public Agreed – locate adjacent to playground so parents can work out and watch kids.**
- Committee thinks were are on track.
- Integrated/functional art desired



City of Bellingham  
Parks & Recreation  
Cordata Community Park – Steering Committee Meeting #1  
1730 - 1930 (local time)  
05/18/16

- Possibly a pump track? Bike Trick Track? **Public Agreed – make it par of the teen/kids active area.**
- e. Art
  - Integrate art into the park.
    - Barriers, signage, gates, etc.
    - Natural art elements that meet the natural, pastoral character.
- f. Sportsfields and Sportcourt
  - Design sportsfields for unregulated casual play – *no built facilities: fences, lighting, backstops, etc.* **Public Agreed**
  - Integrate space for sports into the natural character of the open play spaces.
  - Hard surface sportcourt is a good idea, ½ basketball court, or court large enough to take pressure off neighborhood courts.
  - Pickleball OK **Public Agreed – vocal supporters showed up, requested 15 dedicated courts, not shared with tennis.**
  - Sport court could create conflicts because of unintended uses. **Public agreed that multipurpose sportcourt would be a good idea.**
    - Unintended uses may be good as well.
  - Color surfacing on sportcourt.
  - Lighting on sportcourt needs discussion. **Public wants no tall lights such as sportslighting. Lighting with shorter poles such as parking lot fixtures could be okay.**
- g. Park Pavilion
  - Good idea.
  - Create a small community building – 50-60 people size, single room for rental, kitchen, and restrooms. **Public Agreed**
  - Integrate building into the character of the site. **Public Agreed**
  - Steve Crooks said naming park pavilion does not follow same policy as naming a park; would like to name the pavilion after Julie Guy.
- h. Sportsfields and Sportcourt
  - Design sportsfields only for casual play or practice – no built facilities: fences, lighting, backstops, etc. **Public Agreed**
  - Integrate space for sports into the natural character of the open play spaces. **Public Agreed**

# Cordata Community Park

## Project Schedule

- Present developed preferred concept plan  
Public Meeting #2 (October 2016)
- Present final park master plan  
Public Meeting #3 (December 2016)
- Parks/Rec Advisory Board approval  
February 2017
- City Council adoption February 2017









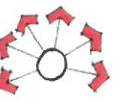




# Cordata Community Park Master Plan


City of Bellingham Parks and Recreation

## Conceptual Master Plan

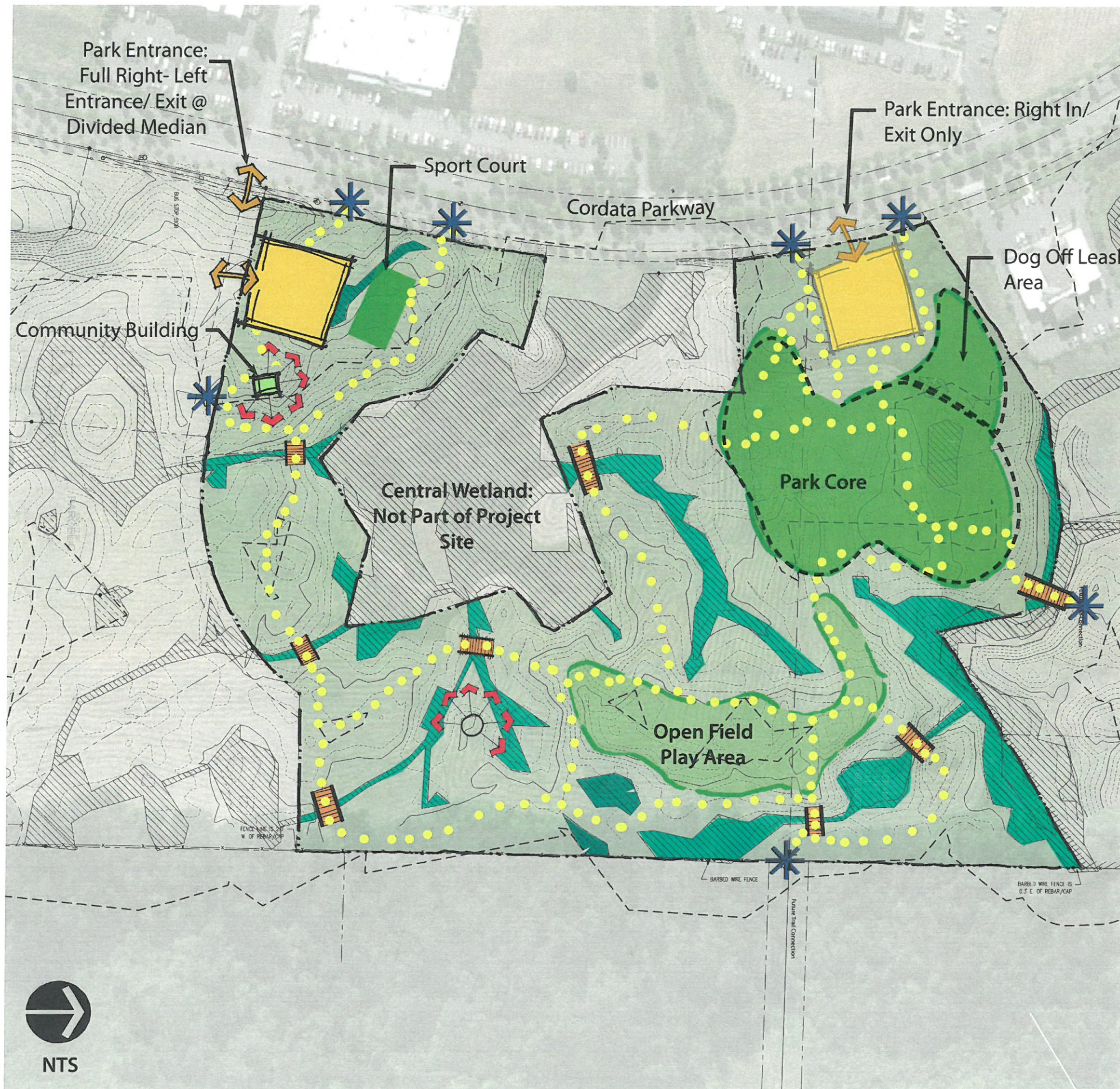
Concept 1

-  Parking: 25-30 Stalls
-  Park Core: Play Area, Basketball, Skate Node, Swings, Picnic Shelter, Nature Play, Climbing Boulders
-  Open Field Play or Dog Off Leash Area
-  Wetlands (Buffers Not Shown)
-  Community Building w/ Restrooms and Green Roof
-  Foot Bridge/ Boardwalk
-  Photo Point
-  ADA Compliant Trail
-  Potential Bike/ Ped Access

City of  
**Bellingham**  
WASHINGTON

 Robert W. Droll  
Landscape Architect, PS  
4405 7th Ave SE, Suite 203  
Lacey, WA 98503  
360.456.3813





# Cordata Community Park Master Plan


City of Bellingham Parks and Recreation

## Conceptual Master Plan

Concept 2

-  Parking: 75-100 Stalls
-  Park Core: Play Area, Basketball, Skate Node, Swings, Picnic Shelter, Nature Play, Climbing Boulders
-  Open Field Play or Dog Off Leash Area
-  Wetlands (Buffers Not Shown)
-  Community Building w/ Restrooms and Green Roof
-  Foot Bridge/ Boardwalk
-  Photo Point
-  ADA Compliant Trail
-  Potential Bike/ Ped Access

City of  
**Bellingham**  
WASHINGTON

 Robert W. Droll  
Landscape Architect, PS  
4405 7th Ave SE, Suite 203  
Lacey, WA 98503  
360.456.3813



# Cordata Community Park Master Plan

City of Bellingham Parks and Recreation

## Concept Plans

Option #1



City of  
**Bellingham**  
WASHINGTON



Robert W. Droll  
Landscape Architect, PS  
4405 7th Ave SE, Suite 203  
Lacey, WA 98503  
360.456.3813

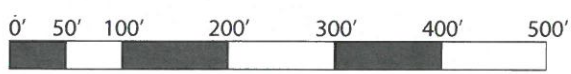
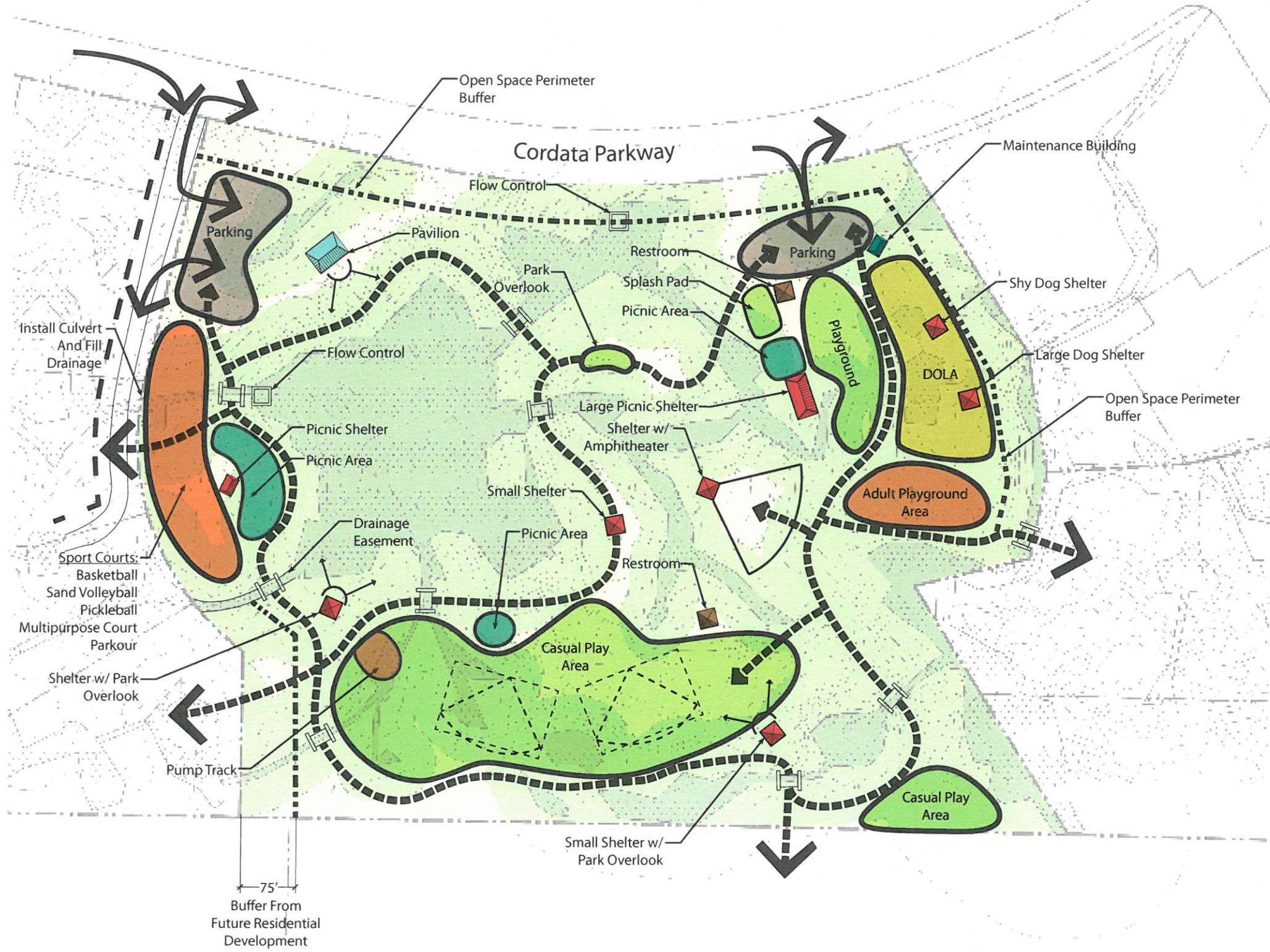


# Cordata Community Park Master Plan

City of Bellingham Parks and Recreation

## Concept Plans

Option #2



City of  
**Bellingham**  
WASHINGTON

**Robert W. Droll**  
Landscape Architect, PS  
4405 7th Ave SE, Suite 203  
Lacey, WA 98503  
360.456.3813



# Cordata Community Park Master Plan

City of Bellingham Parks and Recreation

## Preferred Conceptual Master Plan



### Legend

- Rolling, rough lawn play areas mowed less frequently
- Mowed lawn for active play. Higher quality lawn than rolling, casual play areas.
- Mowed Lawn with Picnic Tables and benches

### Note

Central Wetland: Potential enhancement stormwater capacity. Start discussing what that means.