

Lorraine Ellis Park Playground Renovation

Bellingham Parks & Recreation

Columbia Neighborhood Association Meeting

March 15, 2022



Outline

- Background – budget, history, site
- Program
- Design concept
- Action



Silver maple and Playground

Background

Estimated Construction Cost: \$112,000

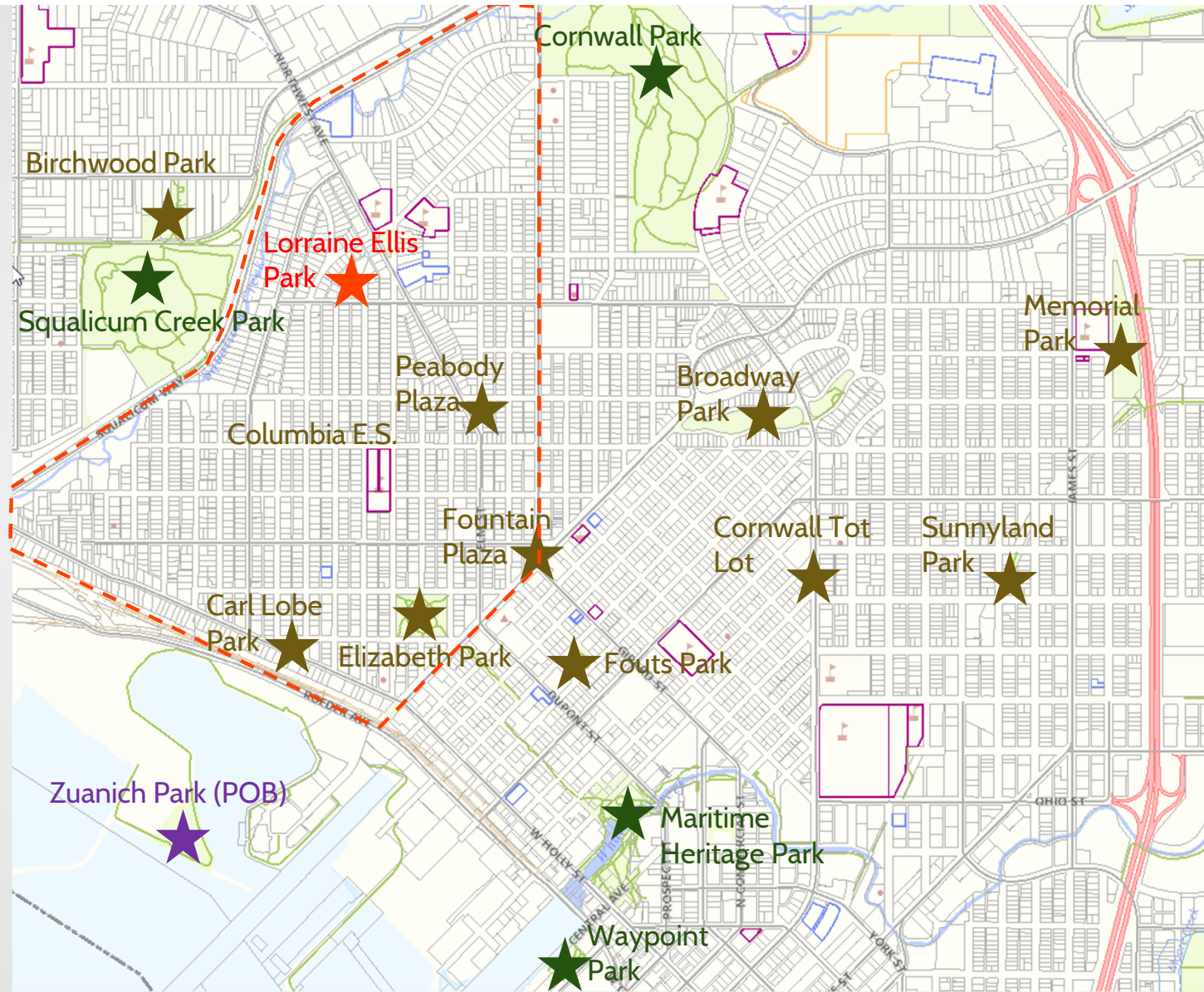
- Replace existing playground apparatus
- ADA path
- Site furnishings as needed
- Accessible on-street parking budget permitting
- Park sign replacement.

Schedule:

Design 2022
Construct 2023



Background Location



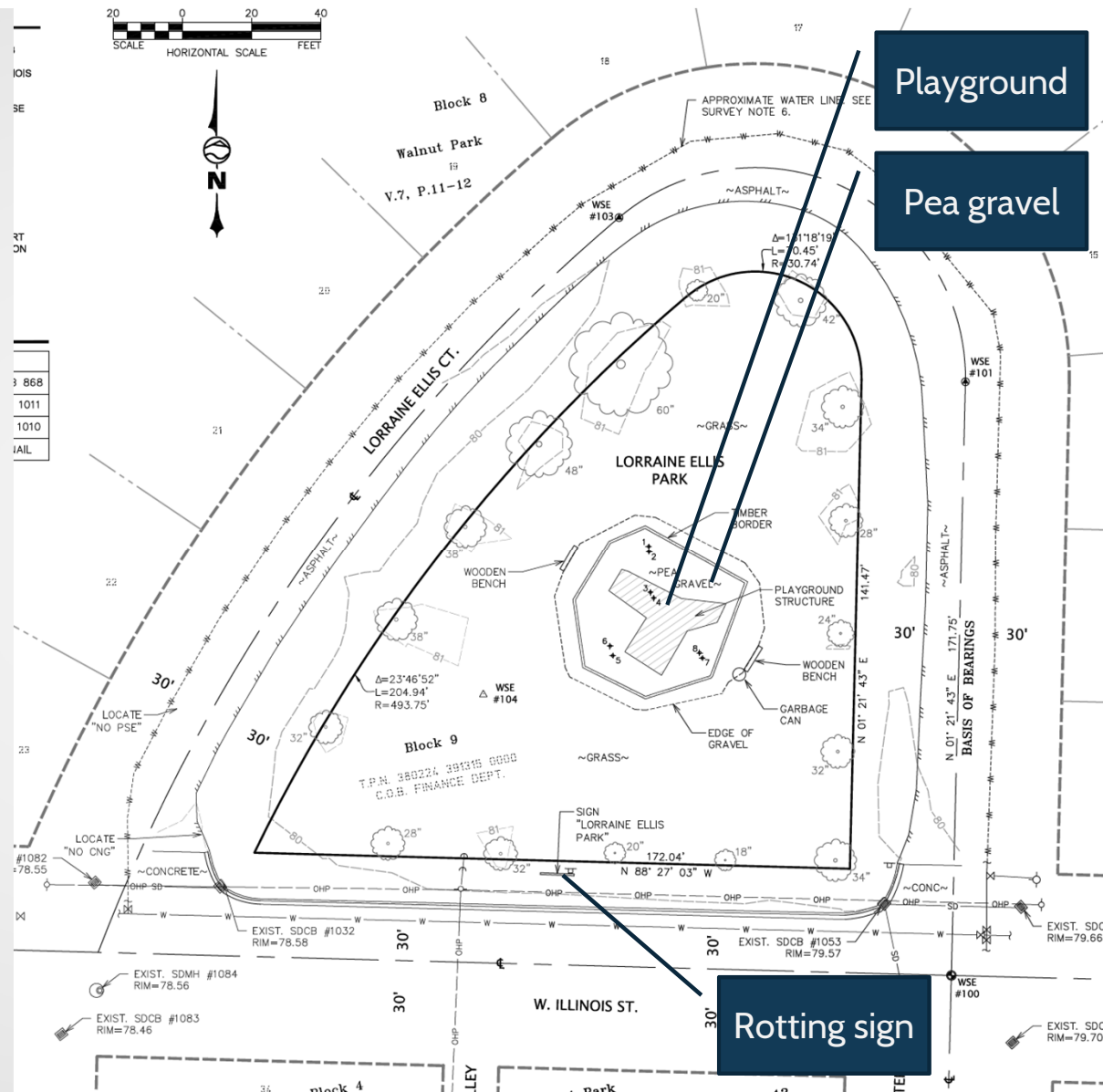
Background History, misc.

.5-acre Maplewood Mcleod Park, zoned public.

The park is named for the daughter of Lawrence and Beatrice Ellis. Lawrence Ellis was partly responsible for developing a portion of the Eldridge Historical District. Beatrice was the daughter of a prominent local banker.

The Ellis' donated the parcel ci. 1945. Then, in 1951, the Western Steel and Salvage donated \$2000 for playground equipment. The donation wasn't enough to install a playground. Sometime in the 1980's the parcel was deemed a "park."

The existing Miracle playground equipment, installed in 1990, over pea gravel, is weathered, difficult to find parts, lacks ADA accessibility requirements and is noncompliant with ASTM f1487 Standard Consumer Performance Specification for Playground Equipment for Public Use.



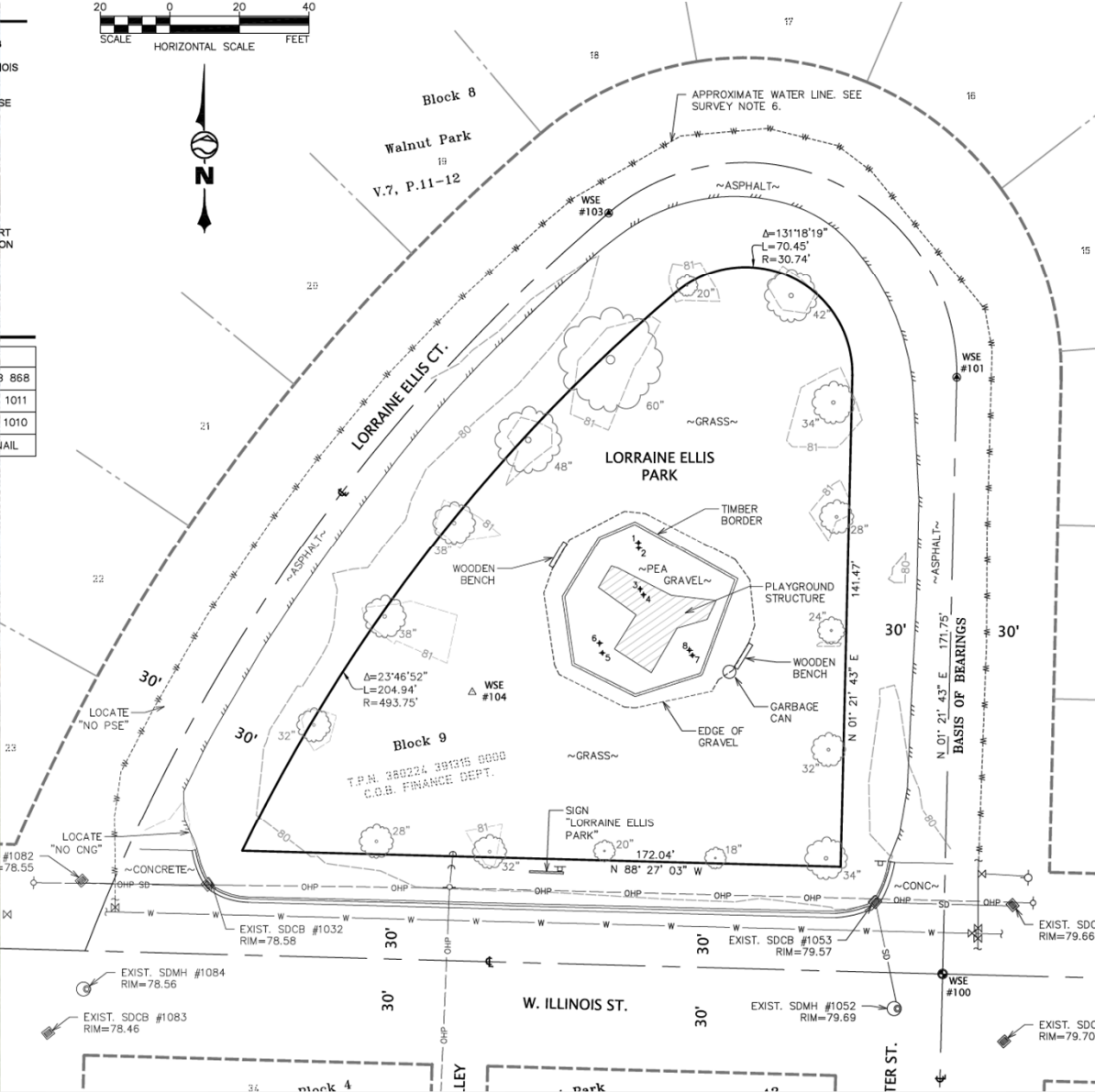


Background

The site

This .5 acre, neighborhood park, is flat. Landscape: lawn, and 16 verdant Silver Maples.

Improvements: One playground, peagravel fall surfacing contained by landscape timbers, two benches, one garbage can and one park sign.



Program

Existing facilities

Name	Designation	Ownership	Parking Lot Space (ea)	Land (acres)	Trail (acres)	Playground (ea)	Basketball (ea)	Dog Off-Leash Area (acres)	Informal Lawn (acres)	Picnic Table (ea)	Bench (ea)	Trash Can (ea)	Community Garden (ea)
Lakeway Community Garden	SU	COB-PARK	0	1.8	0.00	0	0	0.0	0.00	0	0	0	1
Laurel Park	NP	COB-PARK	7	2.2	0.09	1	1	0.0	0.00	1	3	1	0
Laurelwood Trail Open Space	OS	ROW	0	2.3	0.37	0	0	0.0	0.00	0	0	0	0
Lazy E Ranch Open Space	OS	COB-FIN	0	2.3	0.00	0	0	0.0	0.00	0	0	0	0
Lee Memorial Park	SU	COB-PARK	0	1.2	0.00	0	0	0.0	0.68	1	5	0	0
Lenora Court Open Space	OS	COB-FIN	0	0.1	0.00	0	0	0.0	0.00	0	0	0	0
Lincoln Creek Open Space	OS	COB-FIN	0	1.3	0.00	0	0	0.0	0.00	0	0	0	0
Little Squalicum Park	OS	WC	14	25.0	1.16	0	0	1.8	0.00	0	0	1	0
Lockwood Open Space	OS	COB-FIN	0	16.5	0.00	0	0	0.0	0.00	0	0	0	0
Lorraine Ellis Park	NP	COB-PARK	0	0.5	0.00	1	0	0.0	0.42	0	2	1	0
Lowell Park Open Space	OS	COB-PARK	0	5.4	0.37	0	0	0.0	0.00	0	0	0	0

The Parks, Recreation, and Open Space Plan generally recommends this for neighborhood parks:

- active/passive recreation activities
- serve those living within a .5 mile walk along a designated pedestrian route
- sidewalk or trail (safe route)
- accommodate a variety of ages and user groups: youth, adults, seniors, and special needs populations
- create a sense of place by bringing together the unique character of the site with that of the neighborhood.

There are **no** specific recommendations for this park.

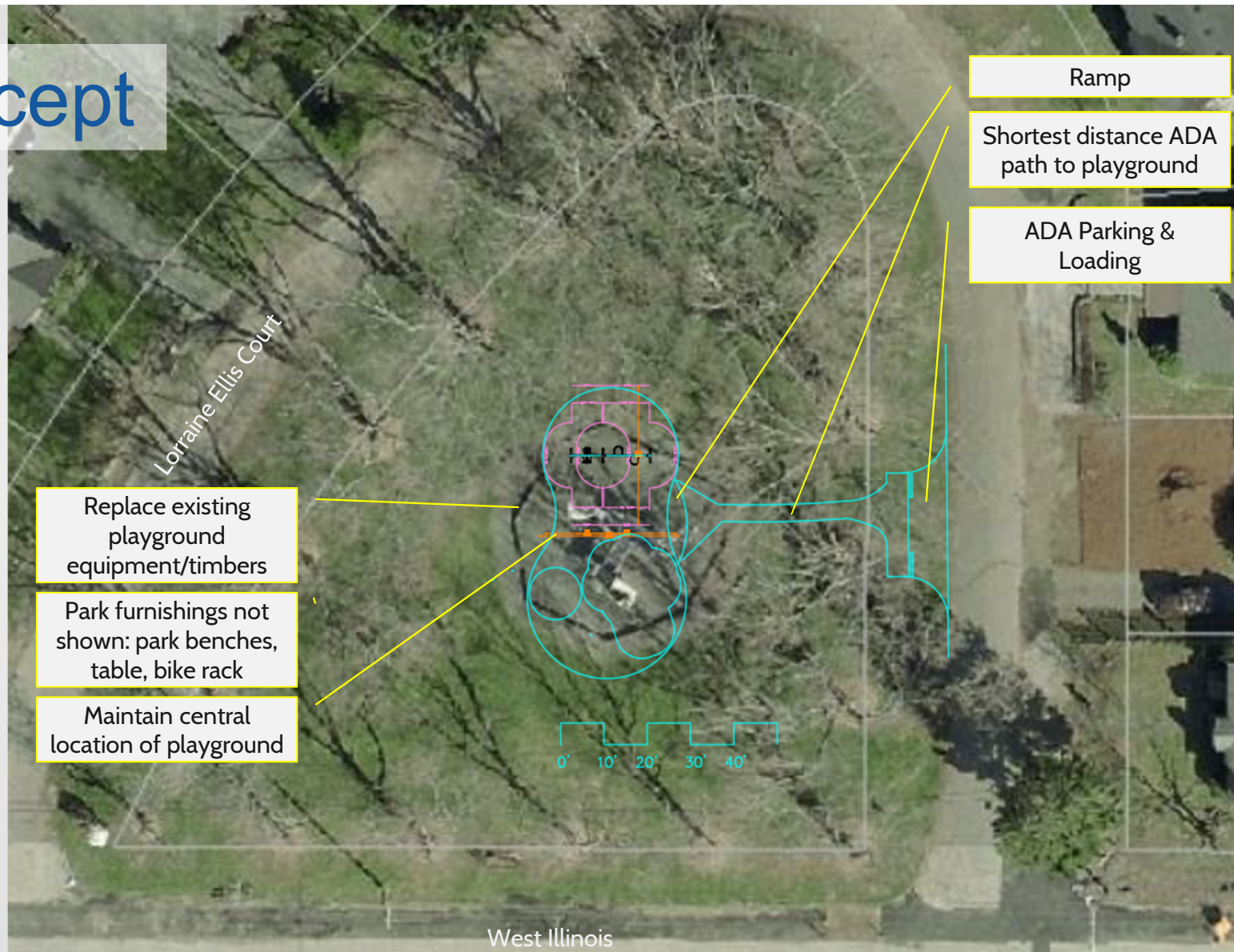
The Columbia Neighborhood Plan does **not** have any specific recommendations for this park.

Program

Initial Cut – Input during membership drive

- Straight, curl, spiral, slide; slides can have bumps and ribs on the slide bed
- No spiral slides >360 degrees.... not for tots
- Double bay to-fro swing one bay for school age or disk swing, one bay for tots
- “buddy swing”
- Sitting and/or standing spinner
- Spring toy – fitting the desired theme
- Talk tube – would like three-way conference call like shipboard phones
- Playhouse function
- Teeter totter, rocker (spring) can be for a group
- Arch climber
- Cable net climber suitable for tots
- Coil climber
- Rock climbing climber (could be natural looking rock or flat surface with hand grips) - fitting the desired theme
- Ladder climber
- No parallel bars
- Similar play events to existing
- Ground based play events such as play panels, music, talk tubes, etc. not requiring fall zones or fall surfacing are OK.

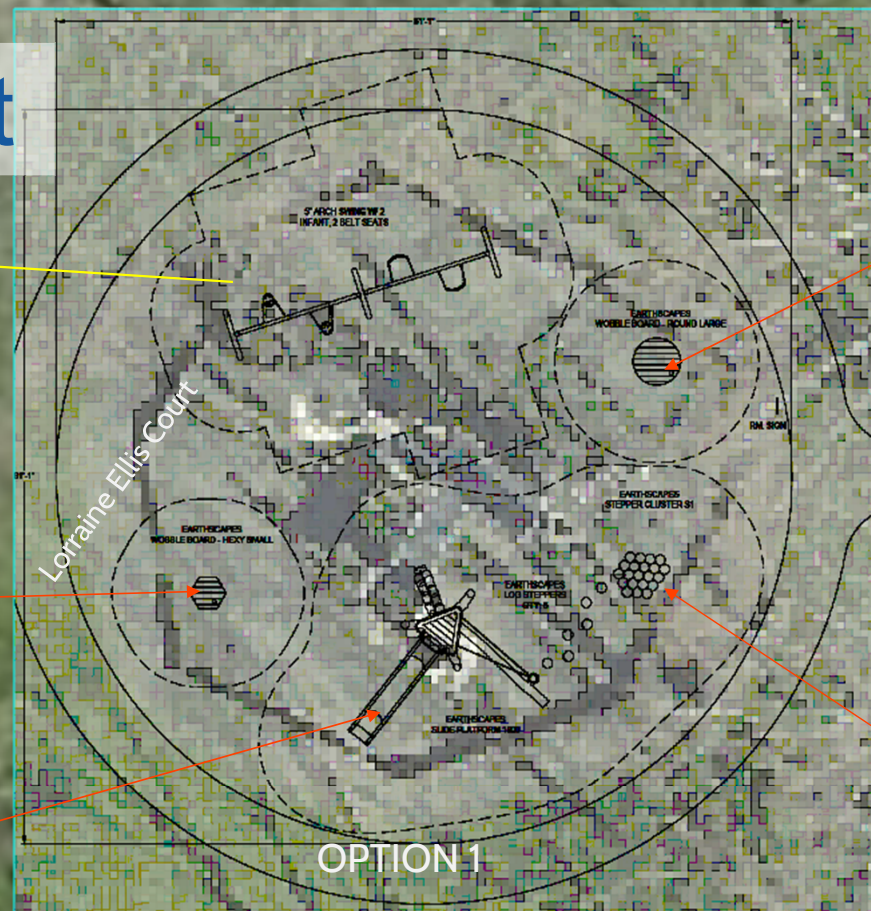
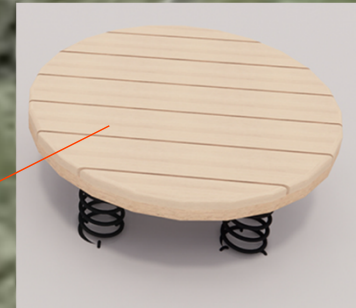
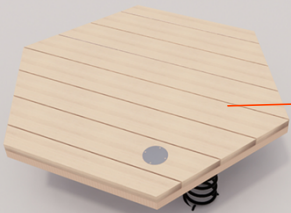
Design concept



Design concept

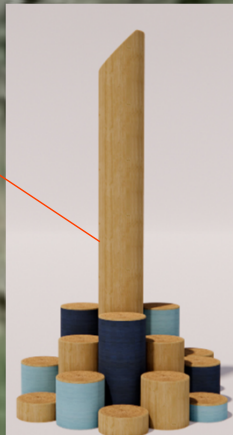
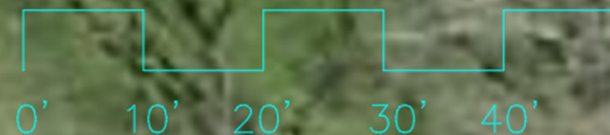
To-fro swing

Park furnishings not shown: park benches, table, bike rack

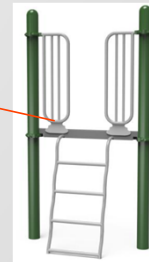
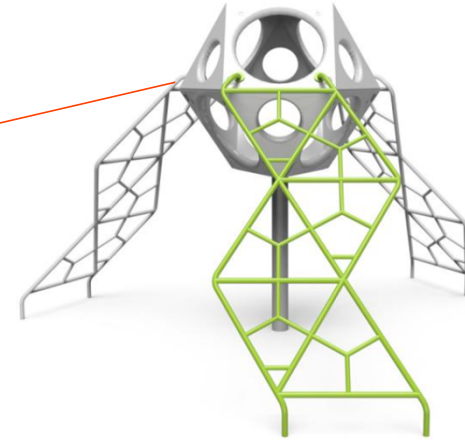
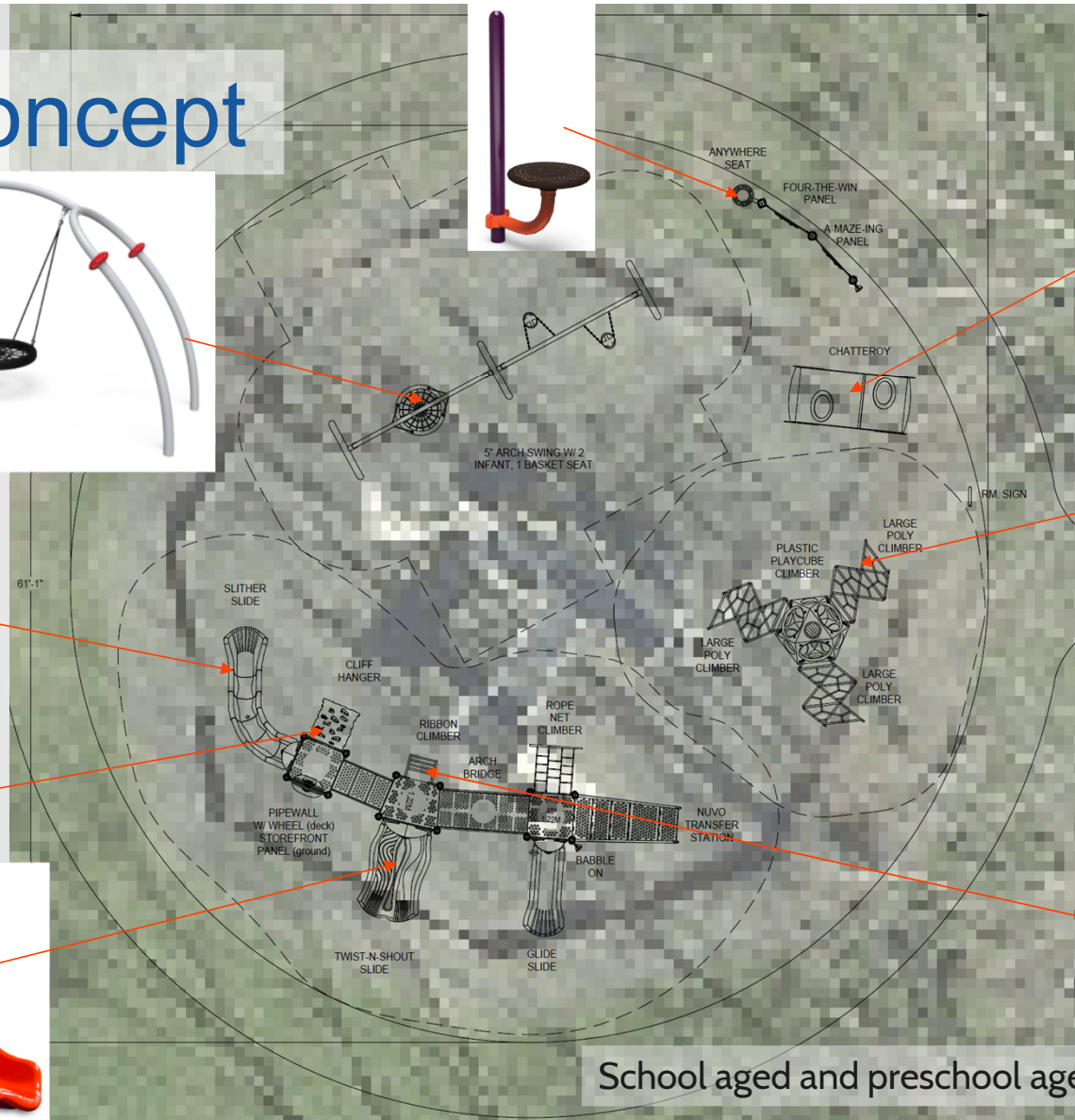


OPTION 1

School ages

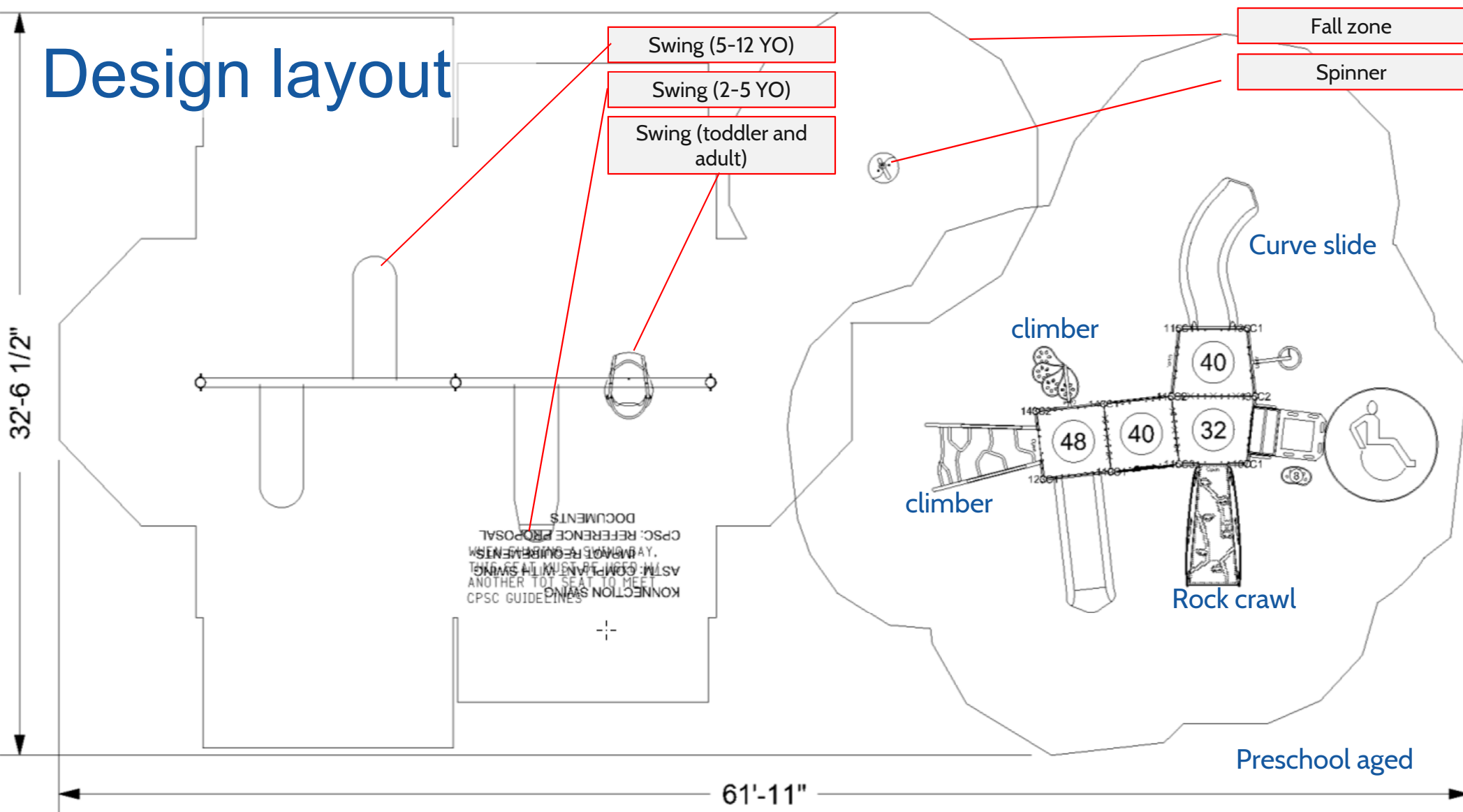


Design concept



School aged and preschool aged

Design layout



Design concept

Preschool aged

COLOR KEY	
●	NAVY
●	LIME
●	SILVER
●	GRANITE
●	BLUE
●	LIME/BLACK
●	GRAY/BLACK
●	BLUE/WHITE



Design concept

Spinner









Swing (5-12 YO)

Swing (2-5 YO)

Swing (Toddler and Ad)



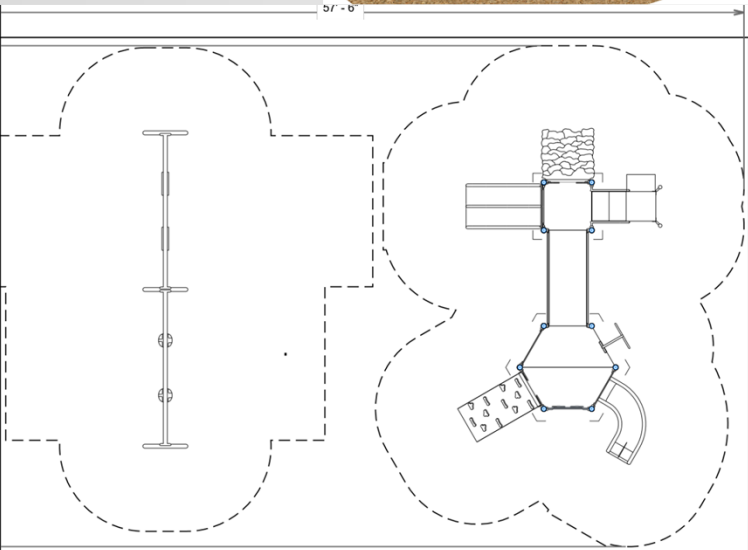
Design concept

COLOR KEY	
	NAVY
	LIME
	SILVER
	GRANITE
	BLUE
	LIME/BLACK
	GRAY/BLACK
	BLUE/WHITE



Preschool aged

Design concept

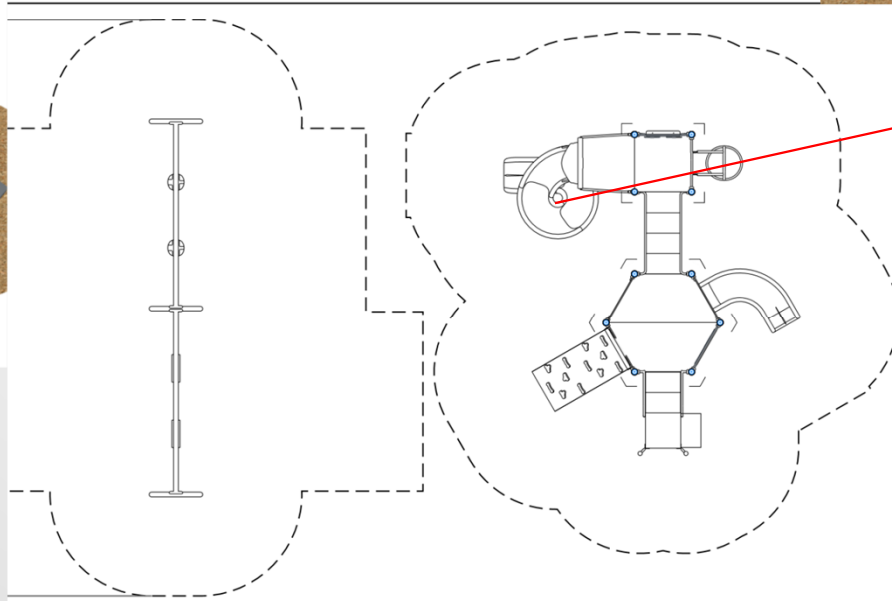
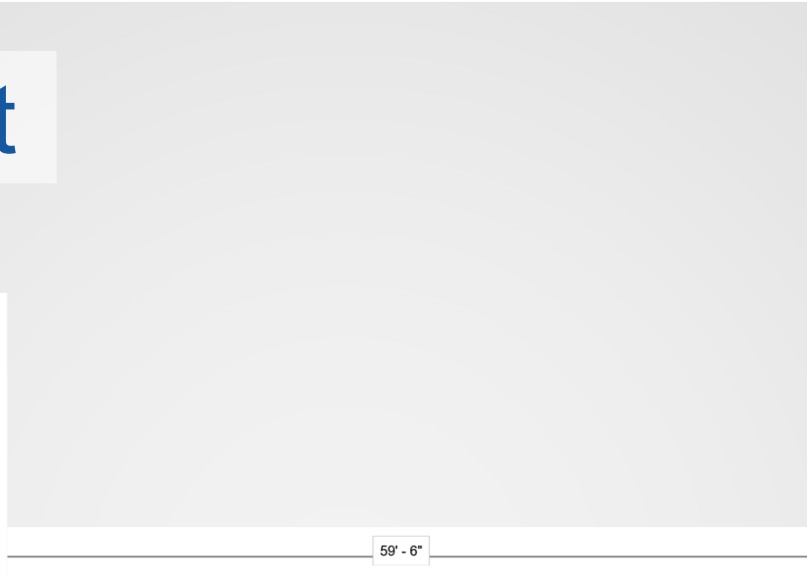


Preschool aged

Design concept



School aged



6' spiral slide



Design concept



Fun factor Red lined



Preschool aged

Action



Two or three people from the neighborhood willing to represent the association and meet with the design team during the design of the project.

Meet:
One or two times.

Lorraine Ellis Park Playground Renovation

Presented by:
Jonathan Schilk, RLA
Bellingham Parks & Recreation / Design and Development Division
(360) 778-7000 parks@cob.org

