

Northridge Park Design and Construction Phase II

Photograph



Description

Phase II development of Northridge Park is complete and ready for enjoyment. We hope that you will take advantage of the new trails. Please remember to keep dogs on leash, pick up dog waste and stay on the trails to protect the new trail-side plantings.

Phase II development of Northridge Park consists of the following:

- Trails - [Trail plans presented at Dec 3, 2008 public meeting \(3,800K PDF\)](#)
 - Internal connections
 - Connections to the surrounding neighborhood
 - Boardwalk to Magrath
 - Parallel parking on Magrath
- Site restoration and planting
- Construction Cost: \$674,800

Phase III development of Northridge Park is currently on hold and will consist of design and construction of the following:

- Westridge to Stoney Creek Way connection
- Utility extensions
- Two activity nodes in the east side of the park to include:
 - Connections to Phase II trails
 - Restroom building(s)
 - Playground(s)
 - Access drive and parking
 - Picnic area and shelters
 - Picnic tables, park benches, bike racks and other park amenities
- Site restoration and planting
- Funding: \$300,000 in Park Impact Fees, \$500,000 in Greenway III Levy

Funding

Greenways Levy III \$500,000
Park Impact Fees \$350,000

Status

2009 Construction Phase II complete.
Design, Phase III on temporary hold.
Construction, Phase III on temporary hold.

Reference

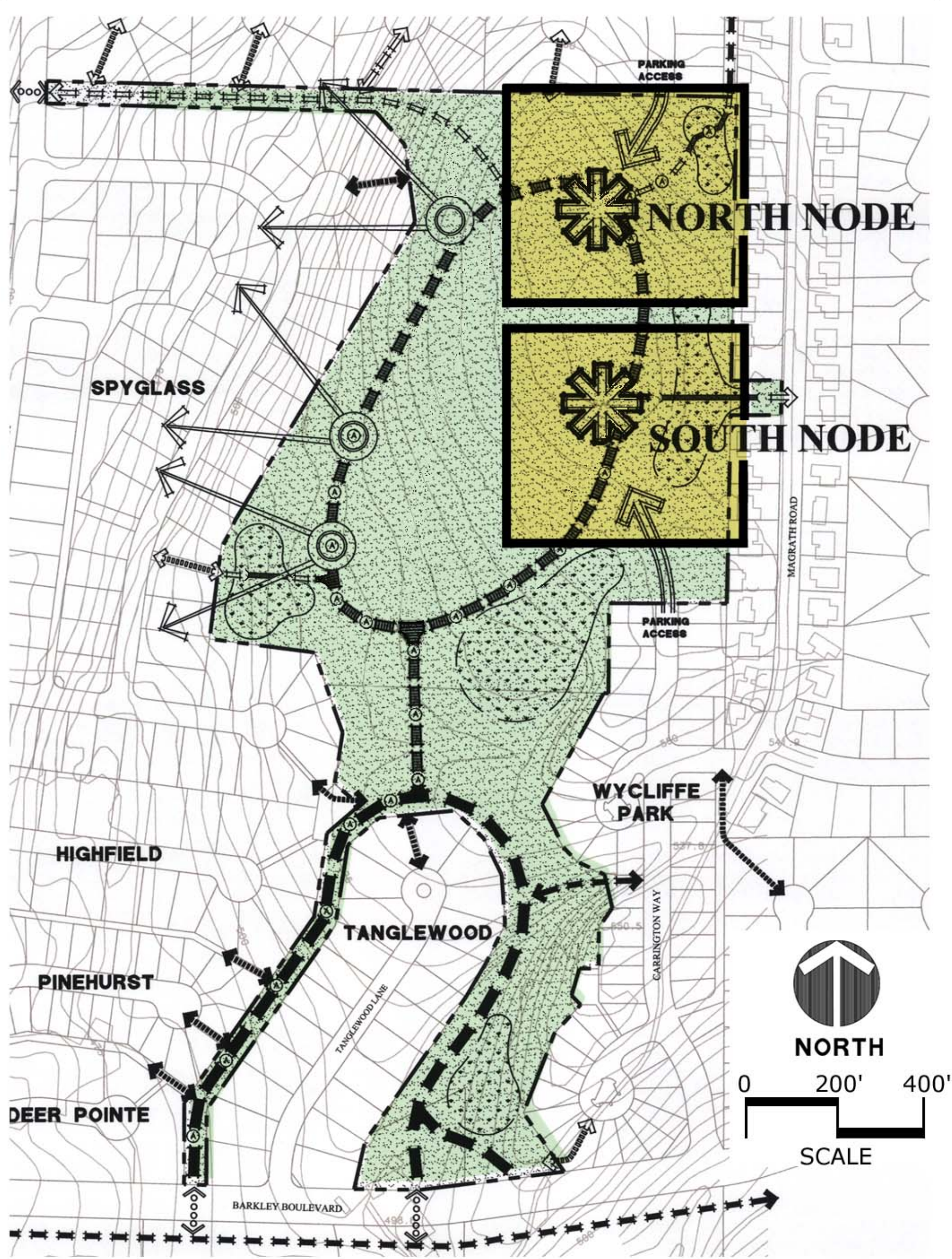
- [Node plans presented at Dec 3, 2008 public meeting \(3,400K PDF\)](#)
- [Trail plans presented at Dec 3, 2008 public meeting \(3,800K PDF\)](#)
- [Northridge Park Master Plan \(1,200K PDF\)](#)
- [Northridge Park Master Plan Nodes \(1,100K PDF\)](#)



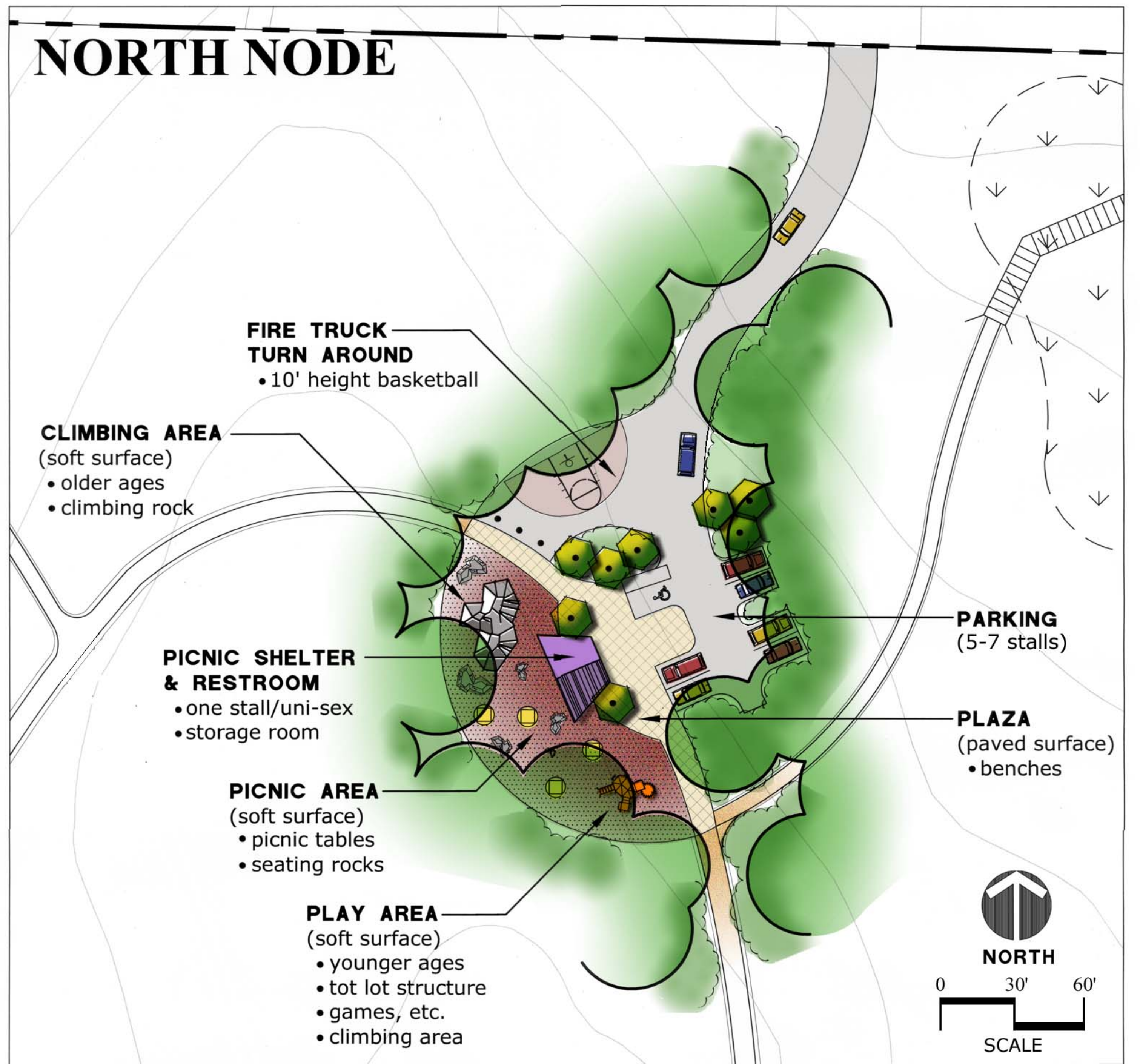




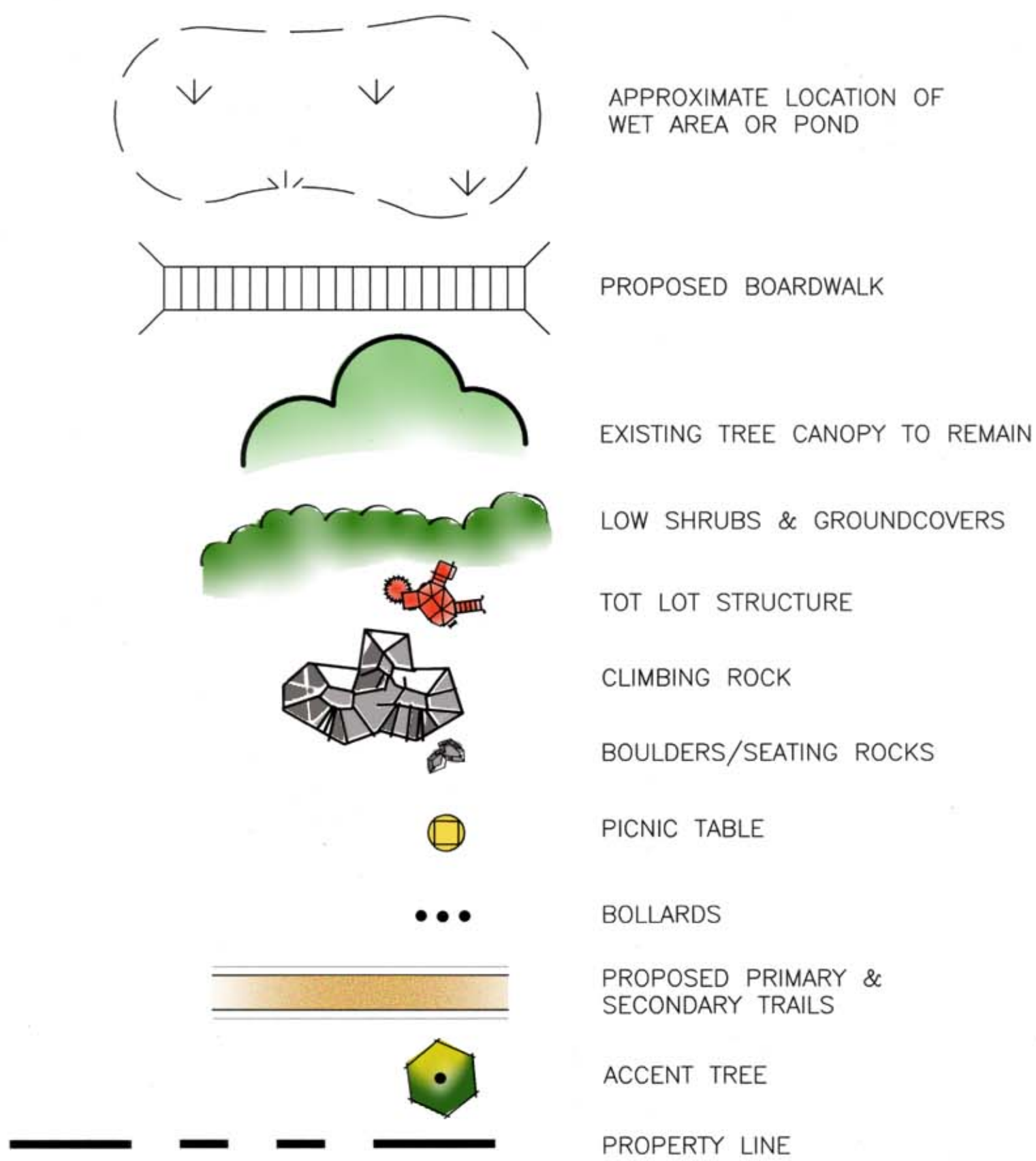
KEY MAP



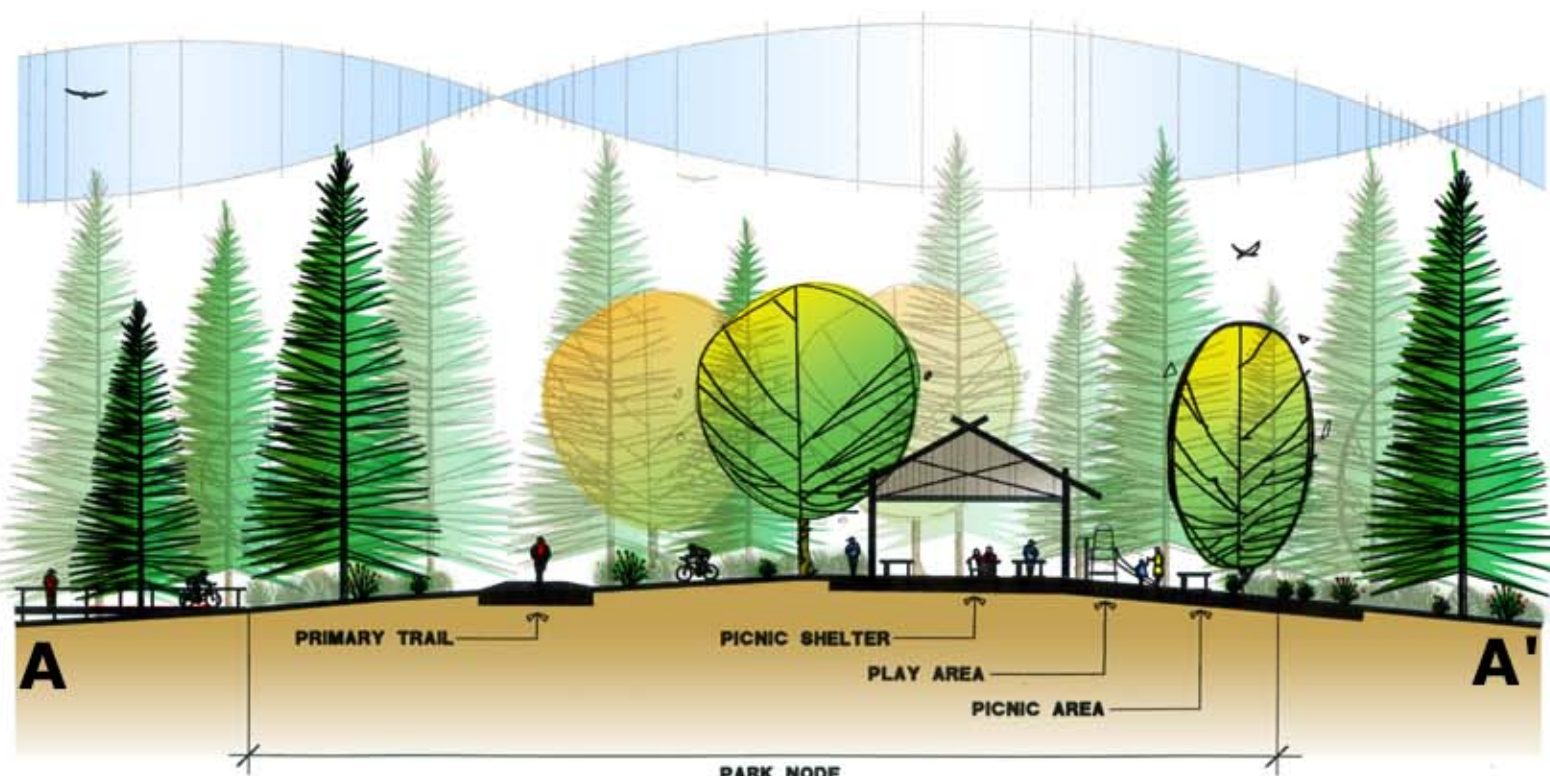
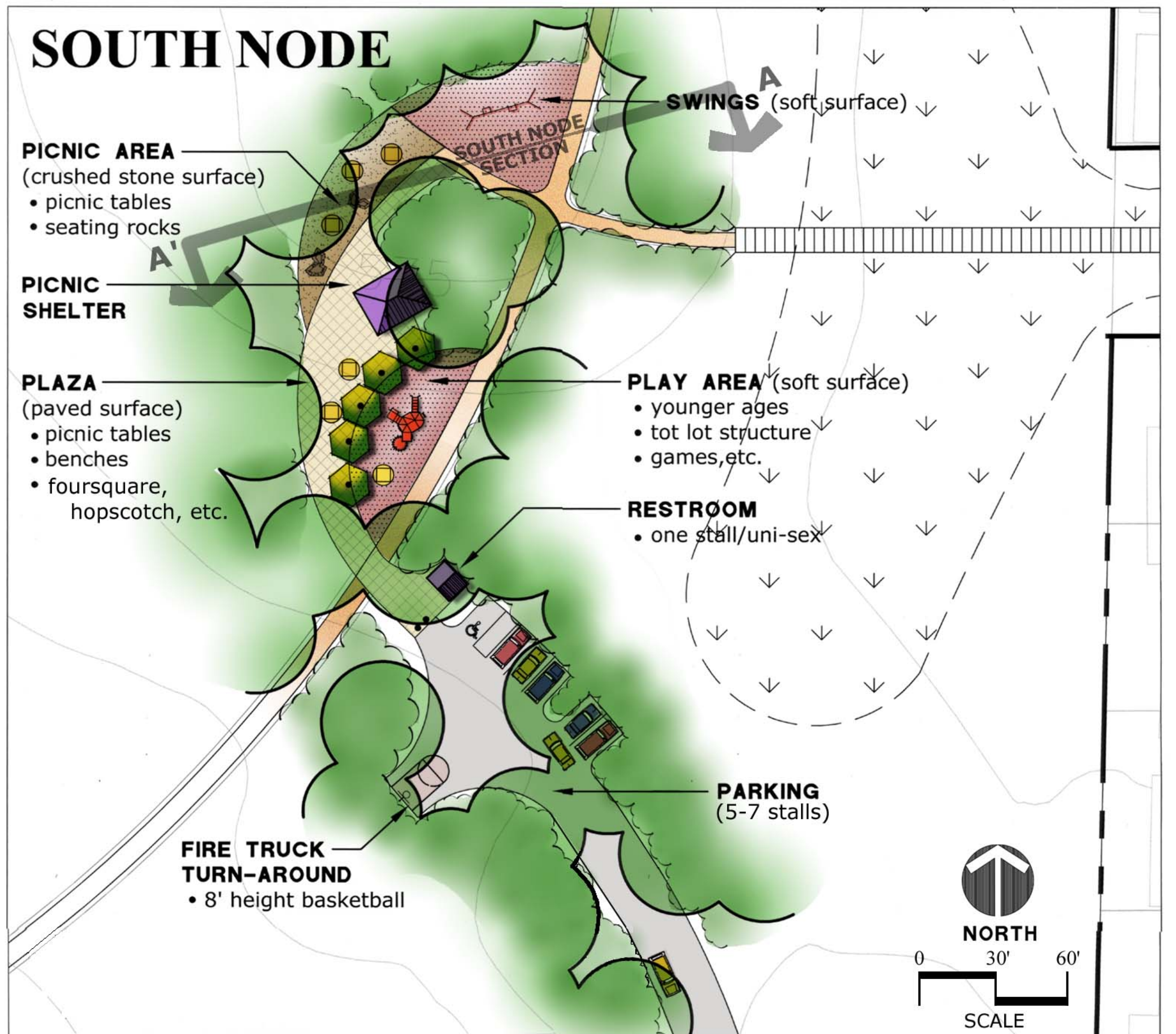
NORTH NODE



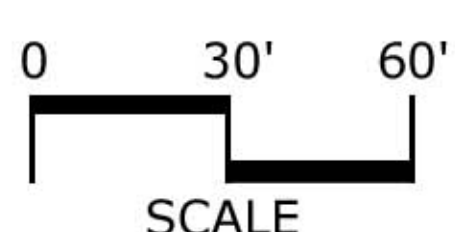
LEGEND



SOUTH NODE



SOUTH NODE SECTION



Northridge Park Master Plan

Bellingham, Washington

May 2002

Hough Beck & Baird Inc.
David Evans Associates



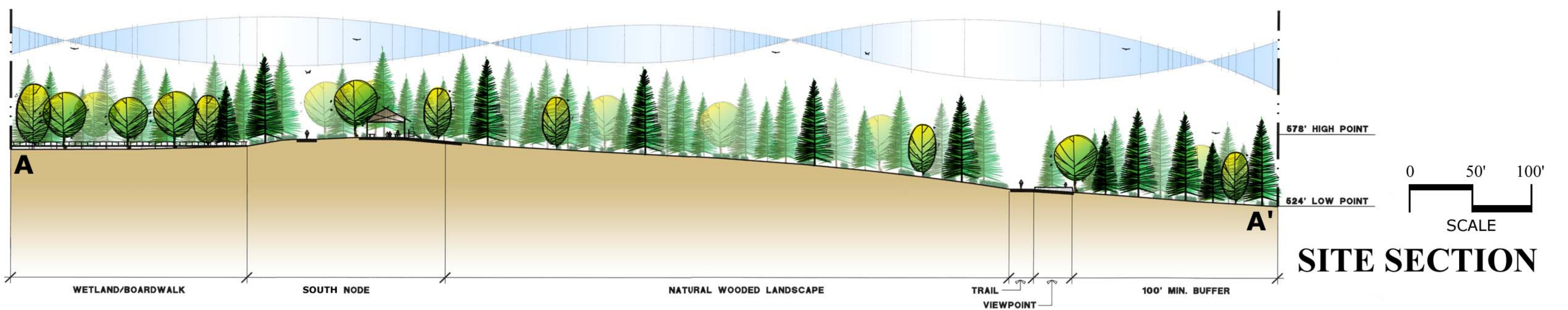
TYPICAL VIEWPOINT



SITE PLAN

LEGEND

- EXISTING PRIMARY TRAIL (8' crushed limestone path)
- PROPOSED PRIMARY TRAIL (8' crushed limestone path, 2' shoulder each side)
- PROPOSED SECONDARY TRAIL (6' crushed limestone path, 1' shoulder each side)
- EXISTING SECONDARY TRAIL (6' crushed limestone path, 1' shoulder each side)
- NEIGHBORHOOD ACCESS - PRIVATE UNDEVELOPED
- NEIGHBORHOOD ACCESS - PRIVATE DEVELOPED
- PEDESTRIAN CROSSINGS
- A.D.A. ACCESSIBLE ROUTE
- PROPOSED BOARDWALK
- PARK NODE
 - picnic shelter
 - picnic tables
 - play areas
 - restroom
 - climbing rock
- VIEWPOINT
 - picnic tables &/or benches
 - views to Bellingham Bay &/or mountains
- APPROXIMATE LOCATION OF WET AREA OR POND
- PROPERTY LINE



SITE SECTION

Northridge Park Master Plan

Bellingham, Washington

May 2002

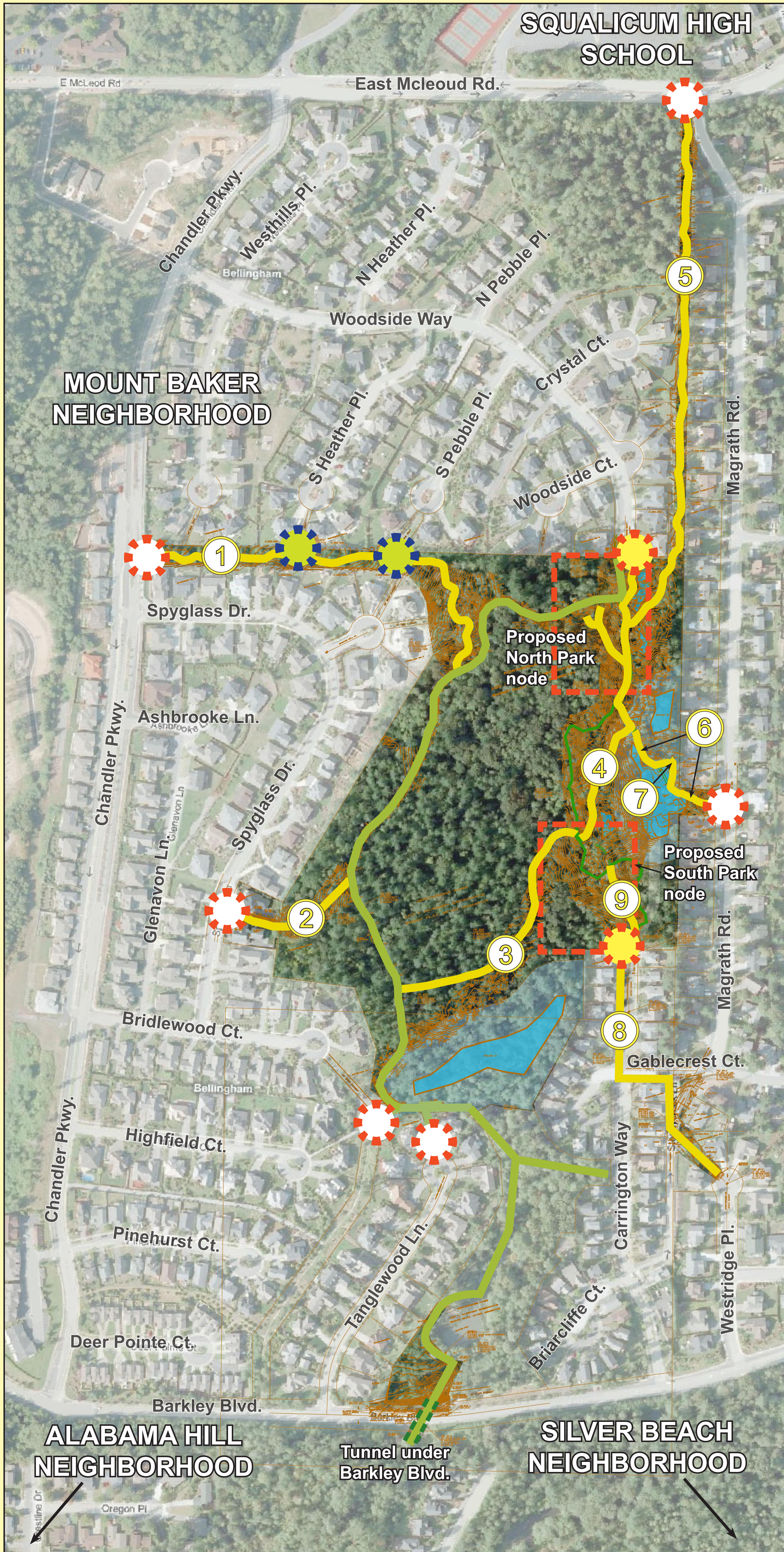
Hough Beck & Baird Inc.
David Evans Associates






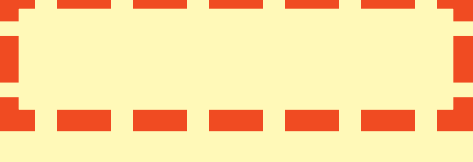
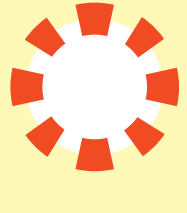
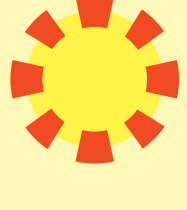



Northridge Park Schematic

TRAIL SYSTEM PLAN

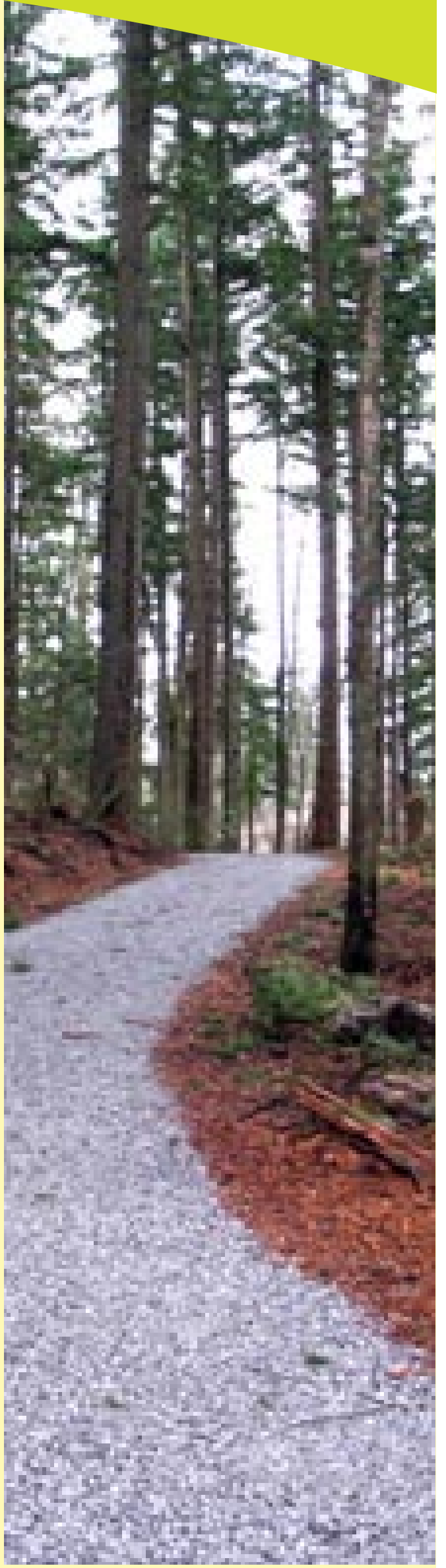


MAP LEGEND

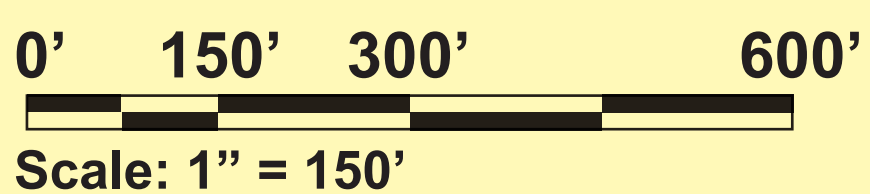
-  Proposed Trails
-  Existing Trails
-  Wetland
-  Node Boundary
-  Trailhead, Wayfinding signage
-  Trailhead, Wayfinding signage, Vehicular Entrance
-  Future Trailhead

TRAIL/CORRIDOR LEGEND

-  **Chandler Corridor**
Crushed limestone surface
4 ft. Trail - 0 ft. shoulder
-  **Spyglass Corridor**
Crushed limestone, 4 ft. Trail - 1 ft. shoulder, or 4 ft. Trail no shoulder where steep.
-  **Connector Trail from Phase 1 to Phase 2 South Node**
Crushed limestone
6 ft. Trail - 2 ft. Shoulder
-  **Intra-Node Trail**
Crushed limestone
6 ft. Trail - 2 ft. Shoulder
-  **Dakin Street Corridor**
Crushed limestone
4 ft. Trail - 1 ft. Shoulder
-  **Magrath Corridor**
Crushed limestone
4 ft. Trail - 1 ft. Shoulder
-  **Boardwalk**
6 ft. wide wood, plastic or fiberglass crossing largest wetland
-  **Westridge Corridor**
Concrete sidewalk
6 ft. wide
-  **Carrington Way Connector**
Crushed limestone
4 ft. wide

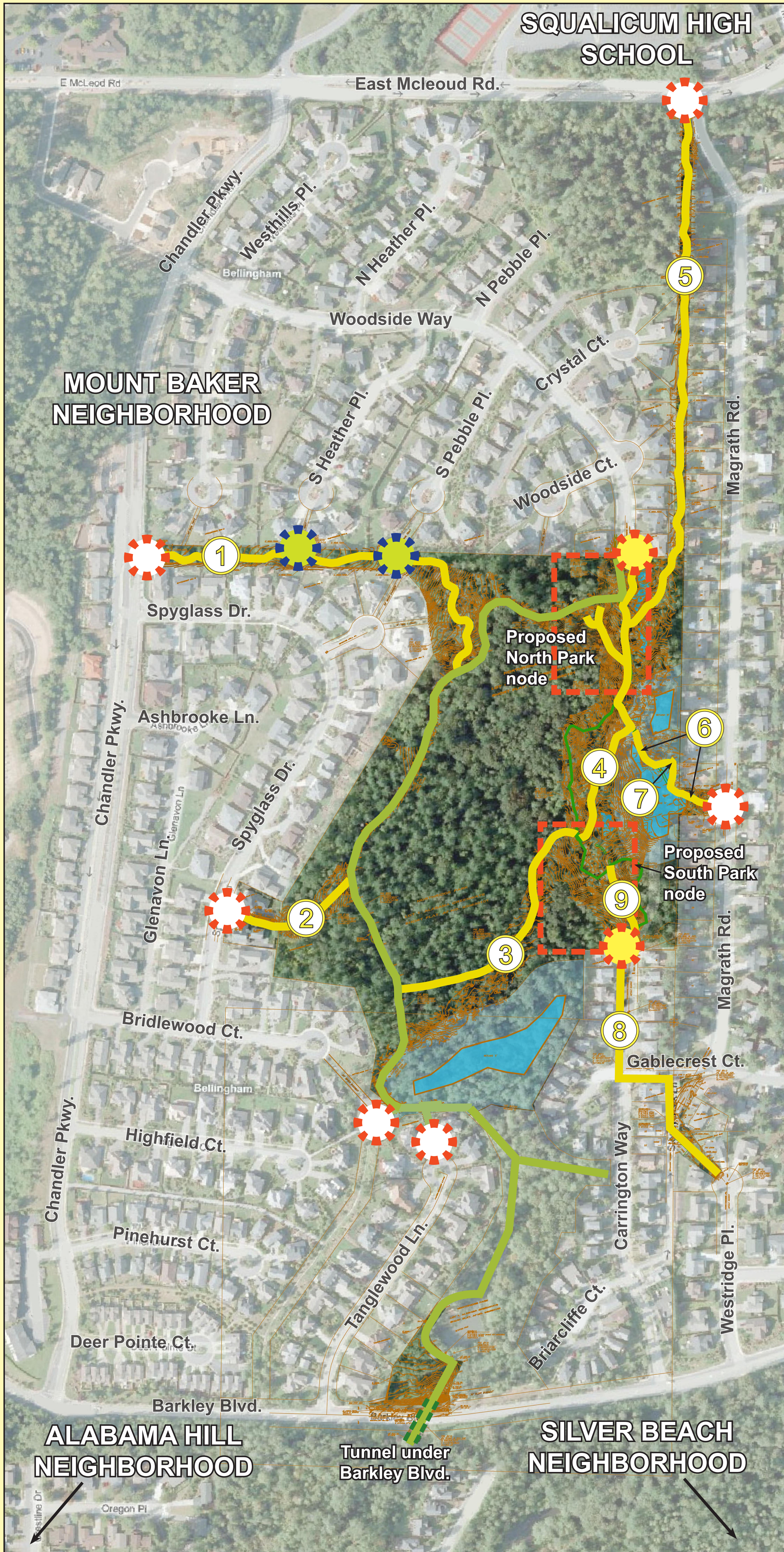


Northridge Park Trail System




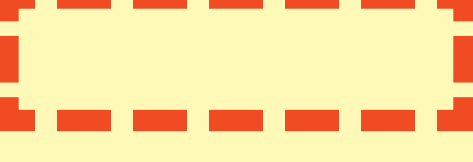
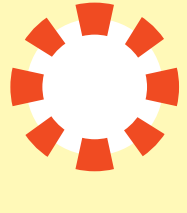
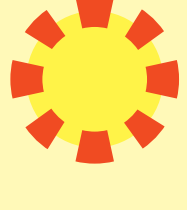



Northridge Park Schematic

TRAIL SYSTEM PLAN

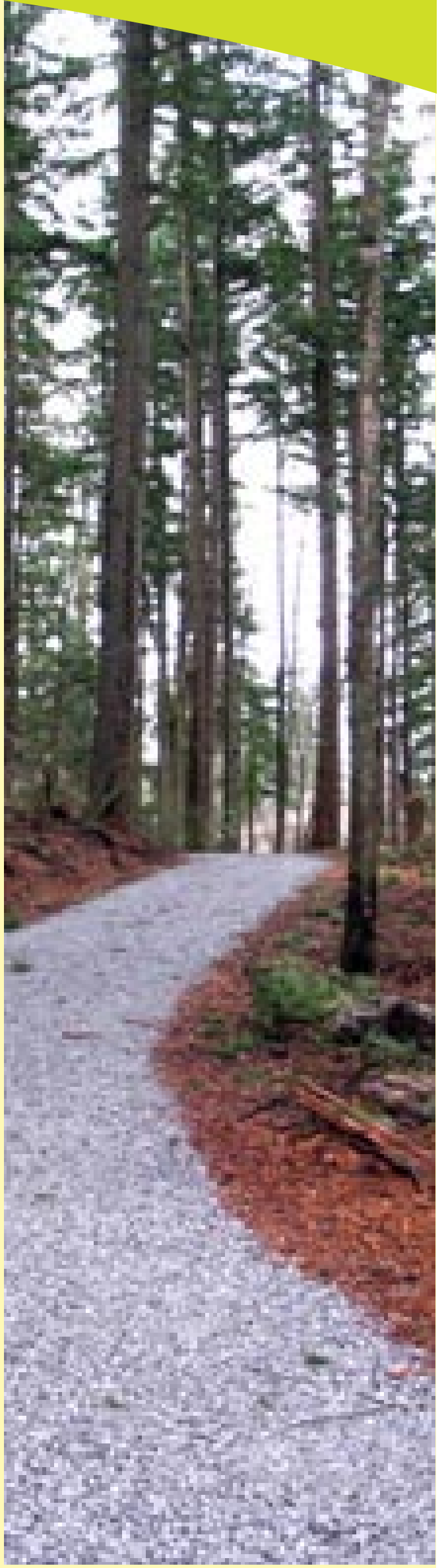


MAP LEGEND

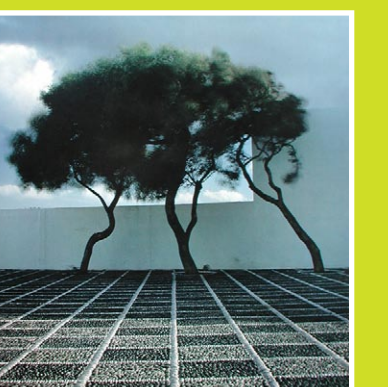
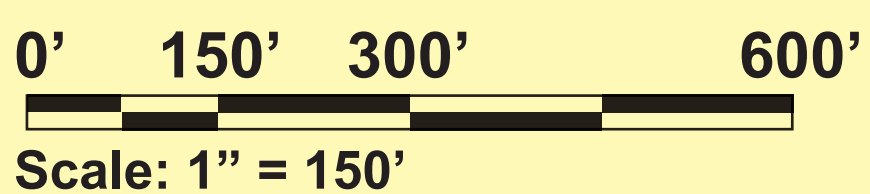
-  Proposed Trails
-  Existing Trails
-  Wetland
-  Node Boundary
-  Trailhead, Wayfinding signage
-  Trailhead, Wayfinding signage, Vehicular Entrance
-  Future Trailhead

TRAIL/CORRIDOR LEGEND

-  **Chandler Corridor**
Crushed limestone surface
4 ft. Trail - 0 ft. shoulder
-  **Spyglass Corridor**
Crushed limestone, 4 ft. Trail - 1 ft. shoulder, or 4 ft. Trail no shoulder where steep.
-  **Connector Trail from Phase 1 to Phase 2 South Node**
Crushed limestone
6 ft. Trail - 2 ft. Shoulder
-  **Intra-Node Trail**
Crushed limestone
6 ft. Trail - 2 ft. Shoulder
-  **Dakin Street Corridor**
Crushed limestone
4 ft. Trail - 1 ft. Shoulder
-  **Magrath Corridor**
Crushed limestone
4 ft. Trail - 1 ft. Shoulder
-  **Boardwalk**
6 ft. wide wood, plastic or fiberglass crossing largest wetland
-  **Westridge Corridor**
Concrete sidewalk
6 ft. wide
-  **Carrington Way Connector**
Crushed limestone
4 ft. wide



Northridge Park Trail System



Northridge Park Schematic Phase 2

NODE PLANS



North Node Plan



South Node Plan

