

Cordata Community Park Master Plan



City of
Bellingham

July 26, 2016

Cordata Community Park

Agenda

- **Meeting Purpose**
- **Housekeeping (restrooms/meeting rules)**
- **Introductions**
- **Project Schedule**
- **The Site**
- **Two Concepts**
- **Discussion**
- **Adjourn 8PM**

Cordata Community Park

Purpose of meeting

- **Follow Parks and Recreation Master Plan Policy (PAR 04.00.01) *Preparation and Adoption of Park Master Plans***
- **Show-n-tell design concepts for the park master plan.**
- **Obtain public comments for refinement of the park master plan into one preferred design.**
- **Obtain input about a proposed list of program elements. Regulatory requirements may change program mix and size of facility.**
- **“Let’s Name the Park” Process (PAR 01.00.01)**

Cordata Community Park

Housekeeping

- **Meeting runs 6PM-8PM**
- **Meeting format: presentation then discussion**
- **Handouts**
- **Please limit remarks to 5 minutes max.**
- **Wait your turn**
- **No interruptions**
- **Have fun**

Cordata Community Park

Introductions – Project Team

- **City of Bellingham Parks and Recreation Dept.**
- **Landscape Architect: RW Droll**
- **Civil Engineer: Reichhardt & Ebe Engineering**
- **Architect: RMC Architects**
- **Geotechnical Engineer: GeoEngineers, Inc.**
- **Biologist: Northwest Ecological Services**
- **Archaeologist: Equinox Research & Consulting Int'l**

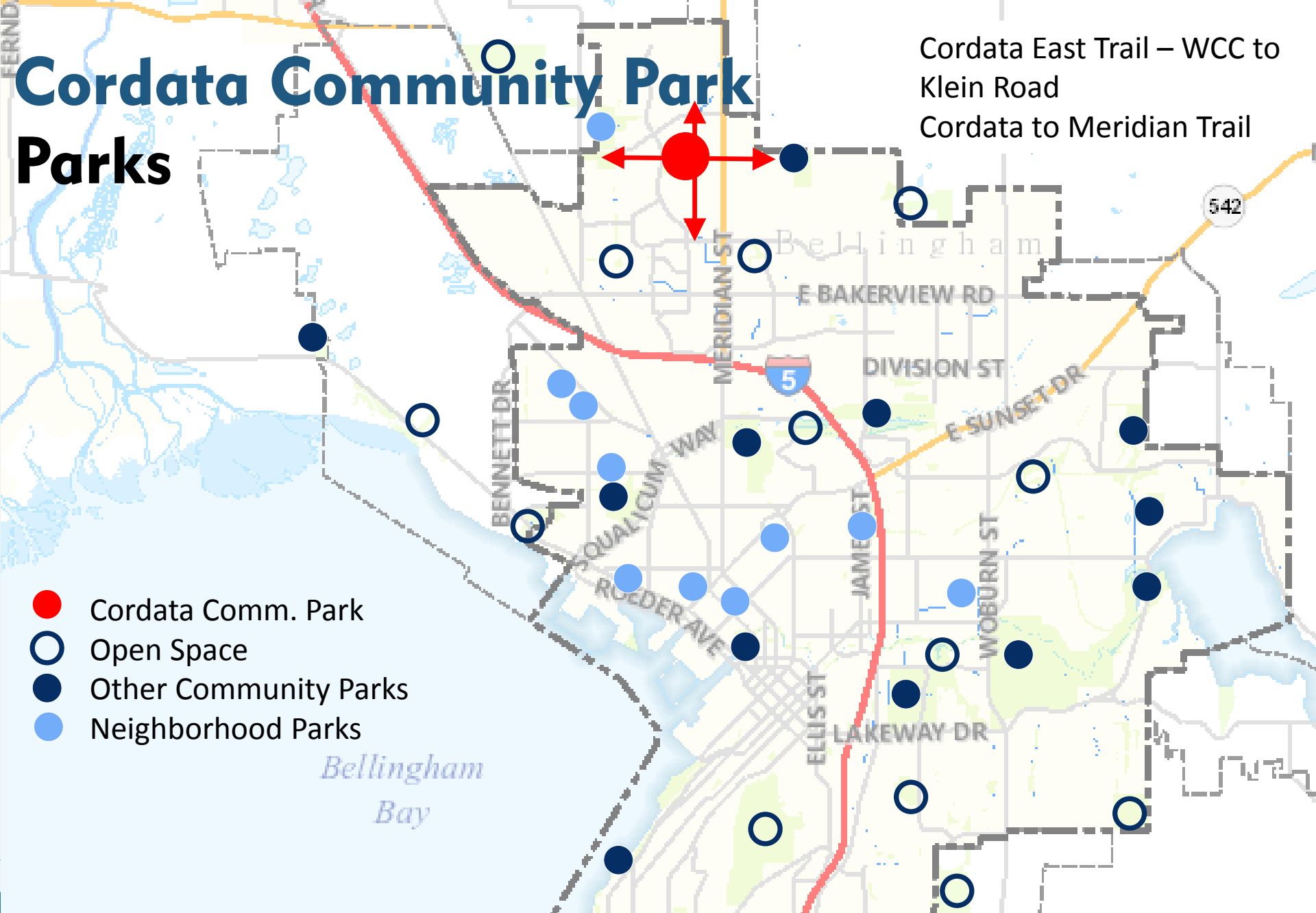
Cordata Community Park

Project Schedule

- **Concept Plans Phase**
Public Meeting #1 (Tonight)
- **Present developed preferred concept plan**
Public Meeting #2 (October 2016)
- **Present final park master plan**
Public Meeting #3 (December 2016)
- **Parks/Rec Advisory Board approval February 2017**
- **City Council adoption February 2017**

Cordata Community Park Parks

Cordata East Trail – WCC to
Klein Road
Cordata to Meridian Trail



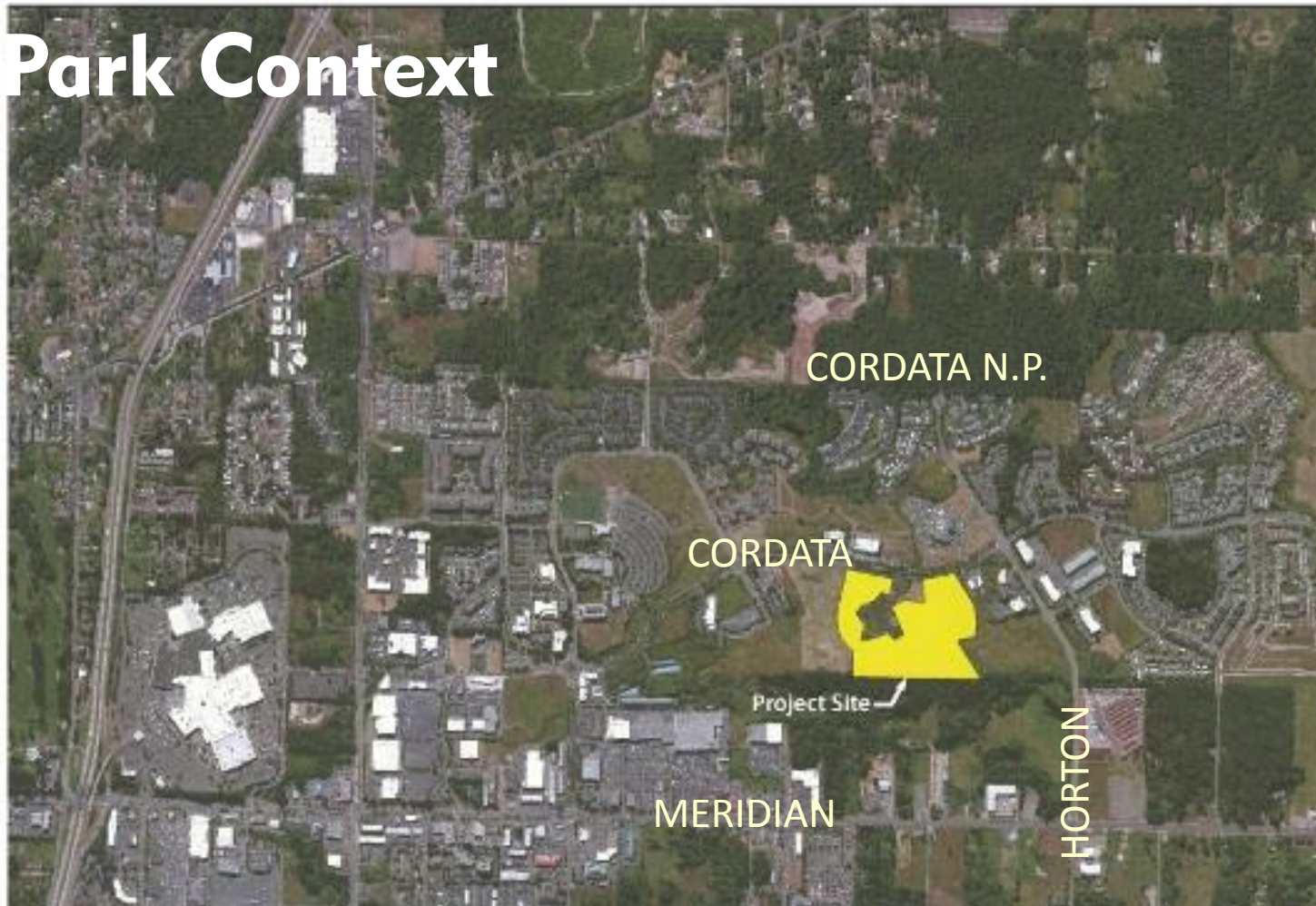
Park Context

Cordata Community Park Master Plan

City of Bellingham Parks
and Recreation

Site Analysis

Vicinity Aerial



Area: 20.5 acres

Date Acquired: 2015

Cost: \$3,620,000 Greenways Three Funds

Cordata Neighborhood

Zoning: Commercial/Industrial/Residential Multi (Areas 10 and 11)

Critical Areas: 17.1 acres, including buffer

City of
Bellingham
WASHINGTON



Robert W. Droll
Landscape Architect, PS
4405 7th Ave SE, Suite 203
Lacey, WA 98503
360.436.3813

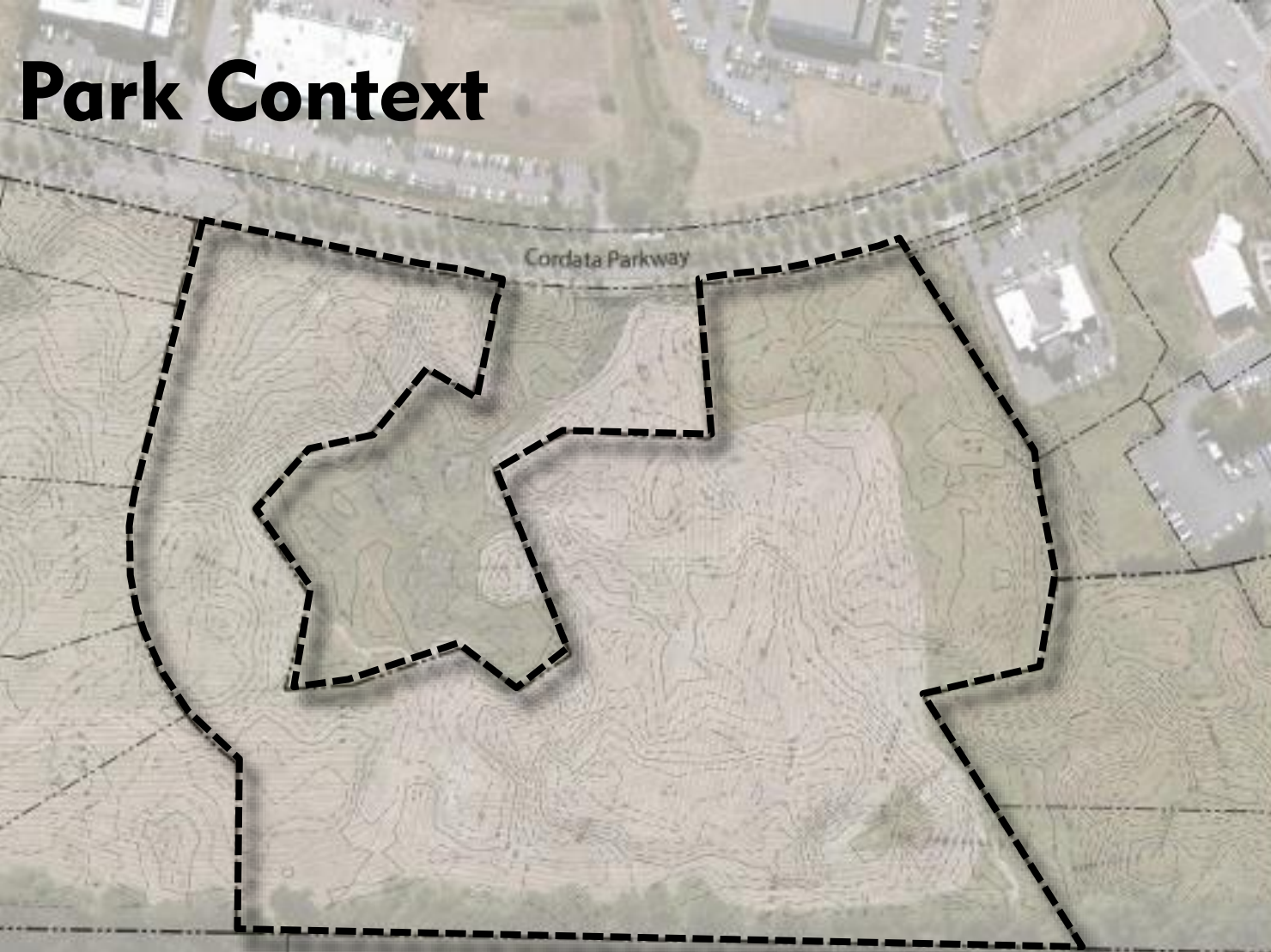
Park Context

Cordata Community Park Master Plan

City of Bellingham Parks
and Recreation

Site Analysis

Topographic Survey



Generally naturally occurring rolling topography with wet depressions. A few berm shaped features exist.

City of
Bellingham
WASHINGTON

Robert W. Droll
Landscape Architect, P.S.
4405 7th Ave SE, Suite 203
Lacey, WA 98503
360.456.3813



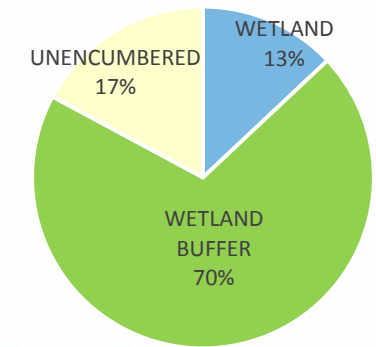
Park Context

Cordata Community Park Master Plan

City of Bellingham Parks
and Recreation

Site Analysis

Wetlands and Buffers



City of
Bellingham
WASHINGTON

Robert W. Droll
Landscape Architect, P5
4405 7th Ave SE, Suite 203
Lacey, WA 98503
360.456.3813



Cordata Community Park Master Plan

City of Bellingham Parks
and Recreation

Site Analysis

Archaeological Predictive Model

Brown: Moderate
Probability

Yellow:
Low Probability

City of
Bellingham
WASHINGTON



Robert W. Droll
Landscape Architect, P.S.
4405 7th Ave SE, Suite 203
Lacey, WA 98503
360.456.3813

Cordata Community Park

Site Photos



Cordata Community Park

Design Considerations

- **Identify & Locate Desired Park Uses**
- **Place Making/Inviting Spaces**
- **Balancing Programming and Critical Areas**
- **Promote Health, Happiness & Well Being**
- **Crime Prevention thru Environmental Design**
- **Maintain Views, as possible**
- **Cohesive, Common Design Theme**



Cordata Community Park Master Plan

City of Bellingham Parks and Recreation

Concept Plans

Option #1



City of
Bellingham
WASHINGTON



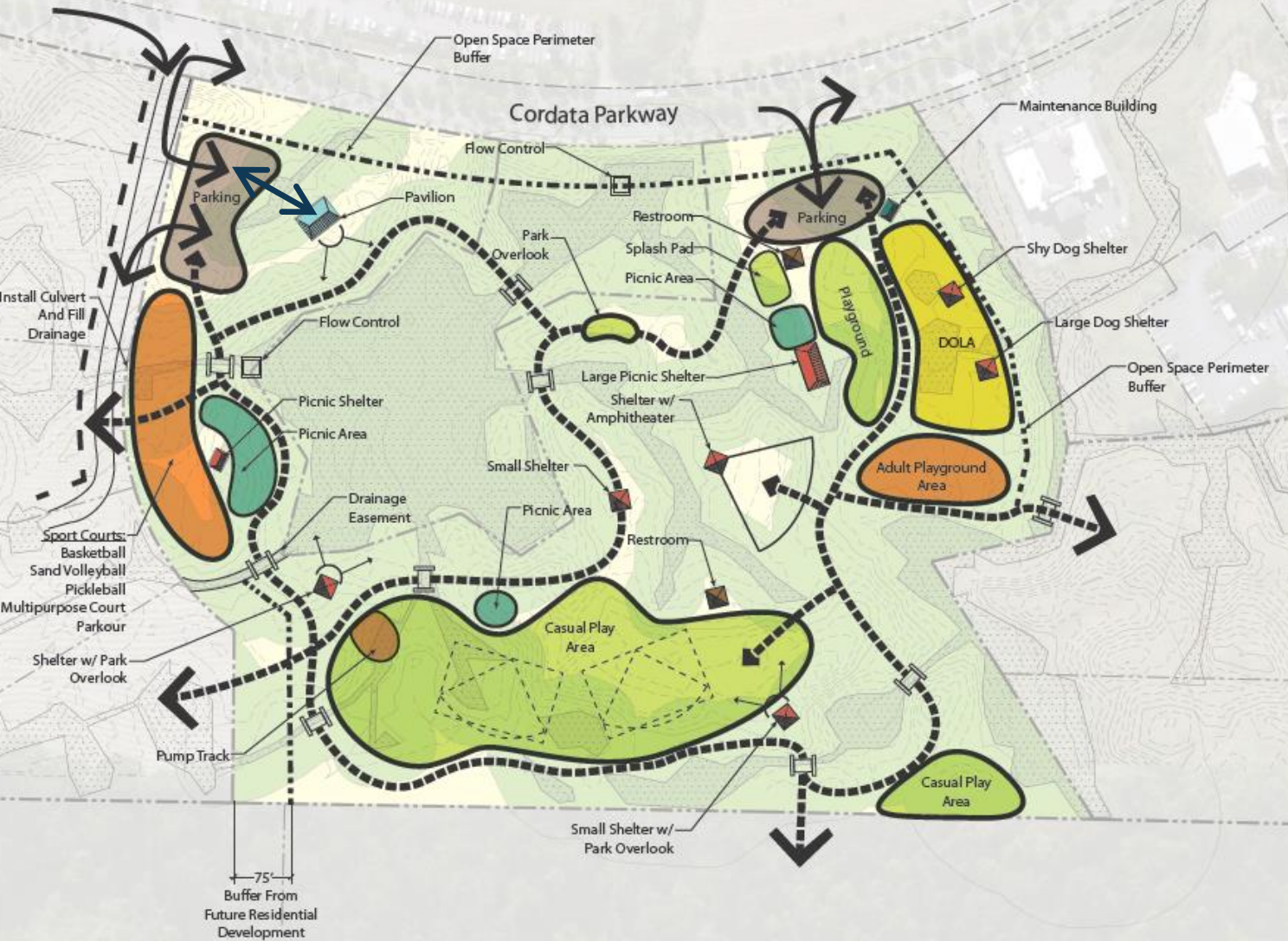
Robert W. Droll
Landscape Architect, PS
4405 7th Ave SE, Suite 203
Lacey, WA 98503
360.456.3813

Cordata Community Park Master Plan

City of Bellingham Parks and Recreation

Concept Plans

Option #2



0' 50' 100' 200' 300' 400' 500'

City of
Bellingham
WASHINGTON



Robert W. Droll
Landscape Architect, PS
4405 7th Ave SE, Suite 203
Lacey, WA 98503
360.456.3813

Cordata Community Park

Park Facilities



Cordata Community Park Park Facilities



FENCED OFF
LEASH AREA



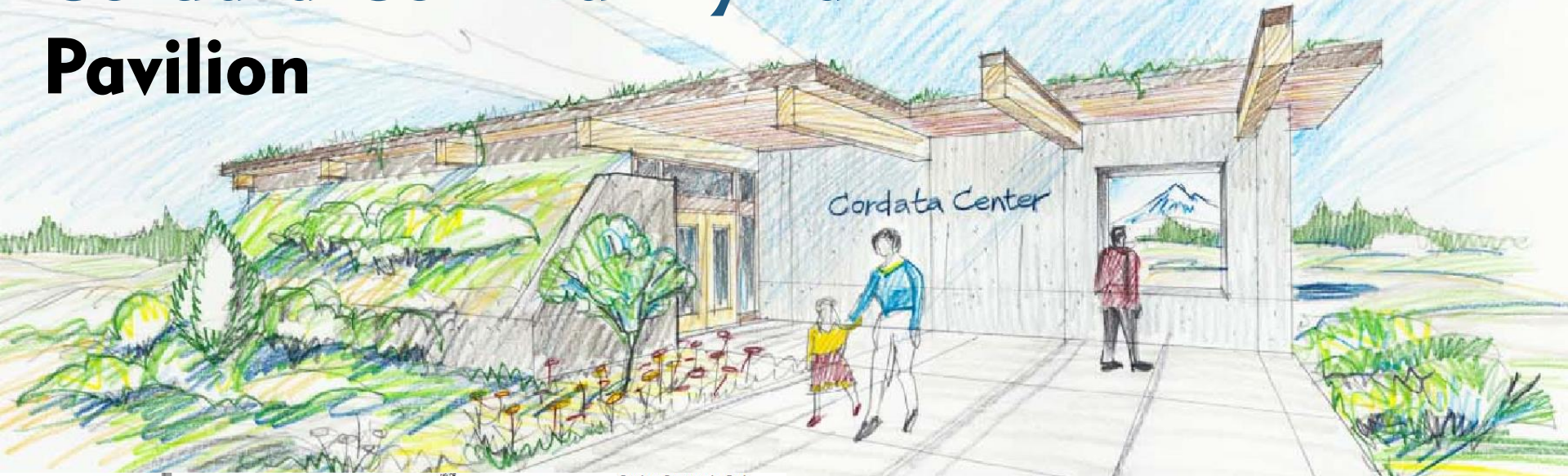
PICKLEBALL



SK8 DOT



Cordata Community Park Pavilion

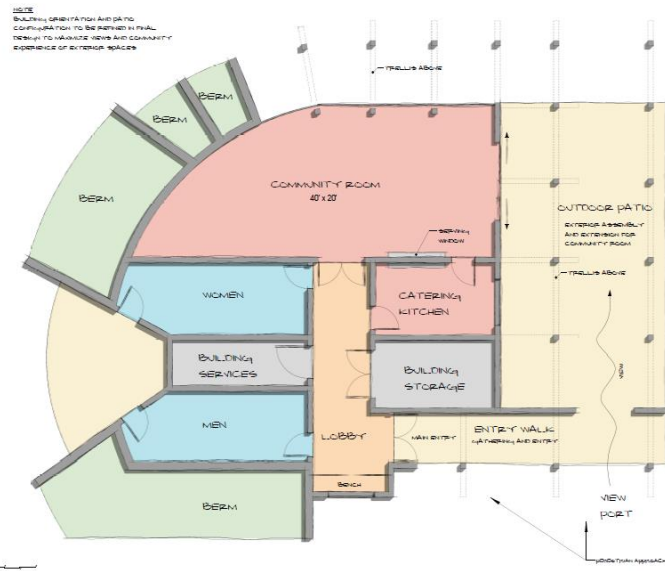


Cordata Community Park Pavilion

City of Bellingham Parks and Recreation

Concept Plans

Option #2



**Cordata Community Park
Pavillon**

City of Bellingham Parks and Recreation

Concept Plans

Option #1

Cordata Community Park

Facilities



Next Steps

- Preferred Concept Development Phase
- Follow up steering committee meeting
- Public Meeting #2

Cordata Community
Park Master Plan

City of Bellingham
and Cordata

Site Analysis
Spring 2010 Survey

City of
Bellingham
WASHINGTON

Michael W. Boyd
Executive Director, PS
1400 1st Ave SE, Suite 200
Bellingham, WA 98203
(360) 885-2000



CORDATA COMMUNITY PARK MASTERPLAN

Presented by: Jonathan Schilk & Don Campbell
Parks Design and Development Division
(360) 778 – 7000 jschilk@cob.org

<https://www.cob.org/services>



City of
Bellingham