



## Legend

- 1 Park Core
- 2 Restroom and Splash Pad Pump Building
- 3 Picnic Shelter w/ Community Sink and BBQ Grill
- 4 Parking- 74 Spaces Including 4 Accessible Spaces
- 5 Bus Parking
- 6 Critical Area Bridge Crossings
- 7 Enhanced Pedestrian Park Access
- 8 RFB Crossing Signal at Pedestrian Crosswalk
- 9 Open Playfield w/ Picnic Area
- 10 Right In - Right Out Driveway
- 11 Potential Areas for Mitigation

## By the numbers

- 3818' trail
- .38 ac. Wetland Impact
- 2.36 ac. indirect impact to wetland
- 4.17 ac. buffer impact
- 4.21 ac. development

1%4Art



SCALE: 1"=50'

## Community Park at Cordata- Phase 1 Site Plan

City of Bellingham Parks and Recreation

Robert W. Droll Landscape Architect, PS | March 7, 2018



## Legend

- 1 Parks Ops Maintenance Building.
- 2 Parkour Course
- 3 Pump Track
- 4 RFBB Crossing Signal at Pedestrian Crosswalk
- 5 2-5 Swing Area
- 6 Swing Area
- 7 Diggables Area
- 8 2-5 and 5-12 Play Area
- 9 Spin Zone
- 10 Restroom and Splash Pad Pump Building
- 11 Splash Pad
- 12 Picnic Shelter w/ Community Sink and BBQ Grill
- 13 Parking- 74 spaces including 4 Accessible Spaces
- 14 Bus Parking
- 15 Critical Area Bridge Crossings
- 16 Enhanced Pedestrian Park Access

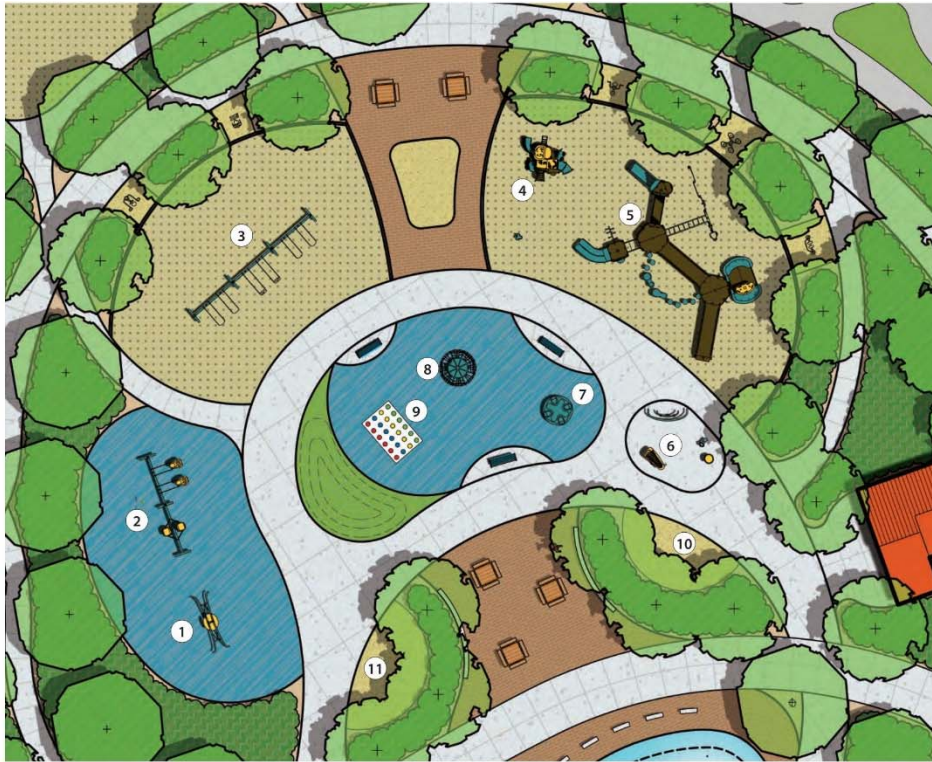


## Community Park at Cordata Park Core Plan

City of Bellingham Parks and Recreation

Robert W. Droll Landscape Architect, PS | March 7, 2018





① Oodle Swing



② Expression Swing- Adult/Child Combo Seating



③ 10 Ft. Tall Swingset



④ 2-5 Yr. Old Play Structure



⑤ 5-12 Yr. Old Play Structure



⑥ Musical Instruments



⑦ Inclusive Sensory Wave Spinner Seat



⑧ Global Motion Spinner



⑨ Outdoor Twister Game on Poured-in-Place



⑩ Wetland Critters Playground Maze



⑪ Honeybee Interpretive Area w/ Bee Sculpture and Honeycomb Climbers

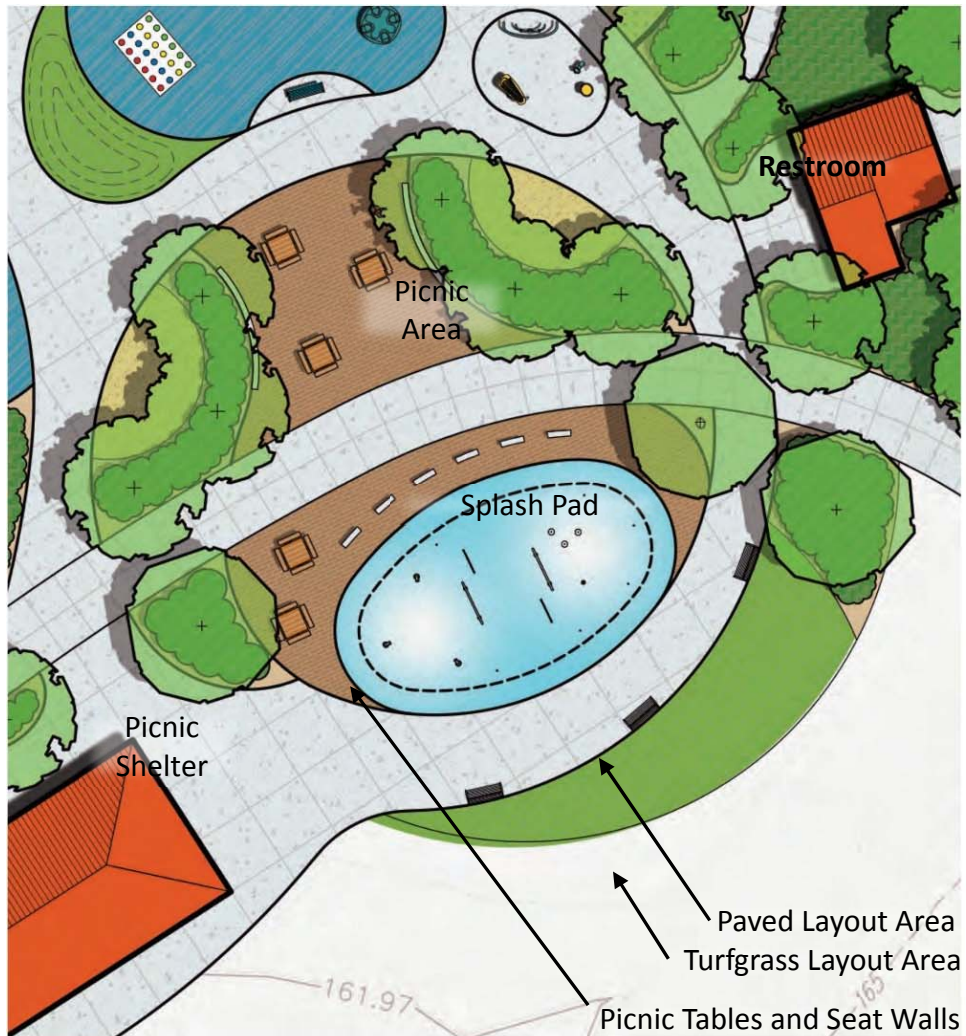


## Community Park at Cordata Playground Area

City of Bellingham Parks and Recreation

Robert W. Droll Landscape Architect, PS | March 7, 2018





Spray Tunnel



Straight Up Ground Spray



Tulip 2-4 Yr. Old



Lily Pad Ground Spray



Fun-Brella



Solo Spurt Ground Spray



Splash Blaster



Water O

## Community Park at Cordata Splash Pad Area

City of Bellingham Parks and Recreation

Robert W. Droll Landscape Architect, PS | March 7, 2018