

## Project Plan Sheets & Street Profiles for W. Illinois St (Sunset to Meridian)

# Project #11: Parkview ES Safe Route to School Improvements

**PROJECT NARRATIVE:** Construct **Tier 3 sidewalks and Tier 3 pedestrian crossing improvements** on Cornwall Avenue, Coolidge Street, and W. Illinois Street and removal of parking on the north side of W. Illinois from Sunset to Meridian to install **Tier 1 bike lanes** on both sides of the corridor. The Bellingham School District is in the process of reconstructing Parkview Elementary School and is partnering with the City of Bellingham to apply to WSDOT for Safe Route to School grant funding. This project compliments project #12 on the western half of the W. Illinois corridor.

**MULTIMODAL TRANSPORTATION BENEFITS:** Access, safety, connectivity for pedestrians, bicyclists, vehicles, and freight trucks.

**PROJECT STATUS:** If WSDOT grant is awarded July 2021, then construction anticipated 2022.

No.	PROJECT DESCRIPTION	FUNDING SOURCE	Cost Estimates (000's) 2020 Dollars							PROJECT TOTALS
			Previous Budget	FUNDED			UNFUNDED			
			2021	2022	2023	2024	2025	2026		
11	Parkview ES Safe Route to School	T-Fund Non-Motorized		200						
	Sidewalks, ADA ramps, crosswalks,	Bham School District		200						
	parking removal, bike lanes	WSDOT Federal SRTS		1,620	Build		Pending SRTS Grant			
	(Sunset Drive to Meridian Street)	Subtotal		2,020					2,020	

**TRANSPORTATION IMPACT FEES COLLECTED**

Yes, for local public funds

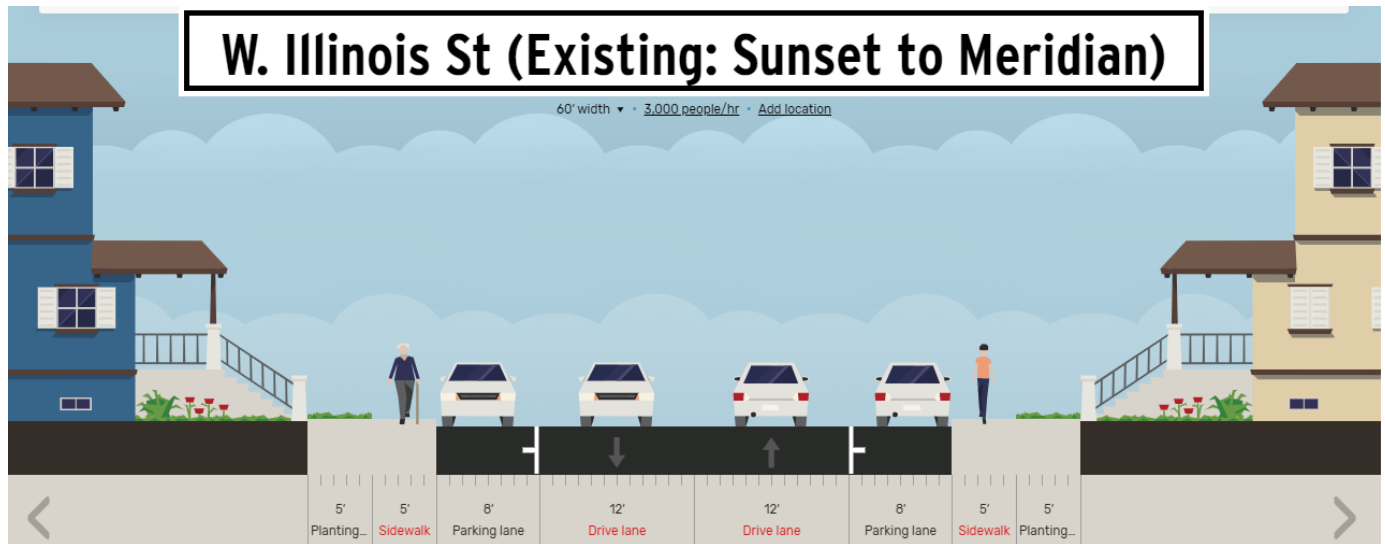
**RIGHT-OF-WAY ACQUISITION NECESSARY**

No



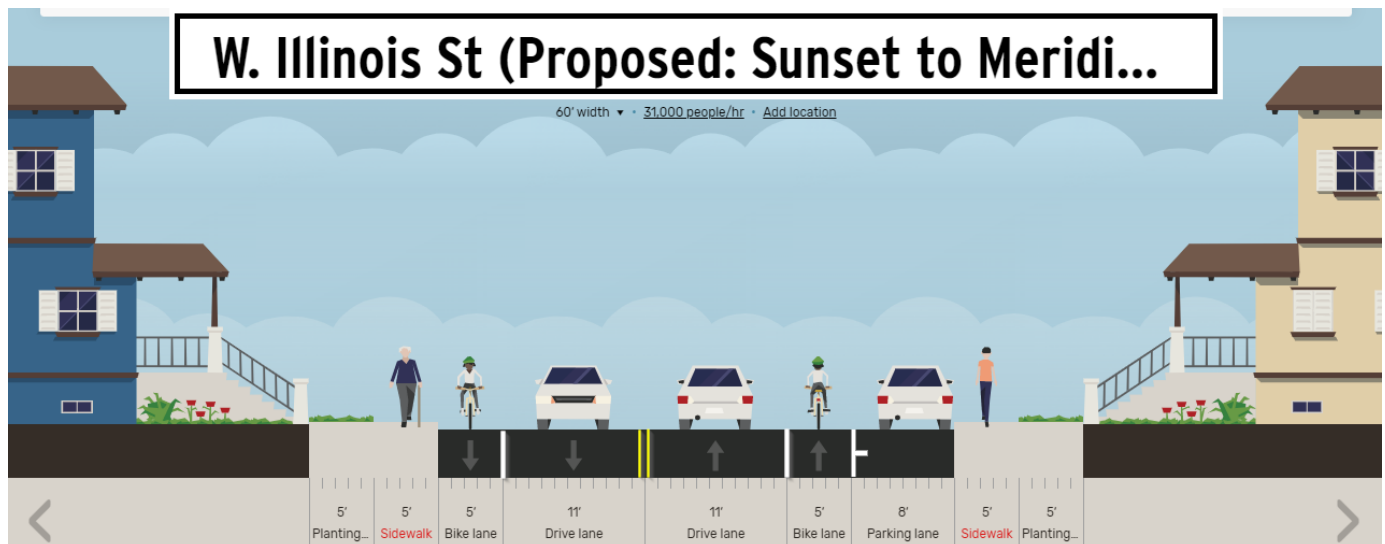
## Existing Conditions – Sunset Drive to Meridian Street

The existing cross section, or street profile, of West Illinois Street between Sunset Drive and Meridian Street measures 40 feet wide between concrete curbs with 5-foot sidewalk on both sides, but no bike lanes. Non-delineated on-street parking exists on both sides of this collector arterial street (8,400 ADT), which has a posted speed limit of 25 mph, is within a 60-foot wide right-of-way and is lined with residential homes (See below). Some homeowners have encroached into the public right-of-way with landscaping, gardens, etc.



## Proposed Improvements – Sunset Drive to Meridian Street

From Sunset to Cornwall, Bellingham proposes to remove on-street parking from the south side of W. Illinois Street, but retain on-street parking on the north side. From Cornwall to Meridian, Bellingham proposes to remove on-street parking from the north side, but retain on-street parking on the south side. Vehicle lanes would be narrowed from 12-feet to 11-feet, and 5-foot marked bike lanes would be installed on each side, and on-street parking would be delineated. ADA upgrades would be constructed at intersections and curb extensions and a user-activated flashing (RRFB) crosswalk would be installed across West Illinois Street at the Vallette Street bike boulevard. Marked bike lanes would be installed on the approach and up to the West Illinois/Meridian traffic signal (See profile below and plan sheets on next pages).



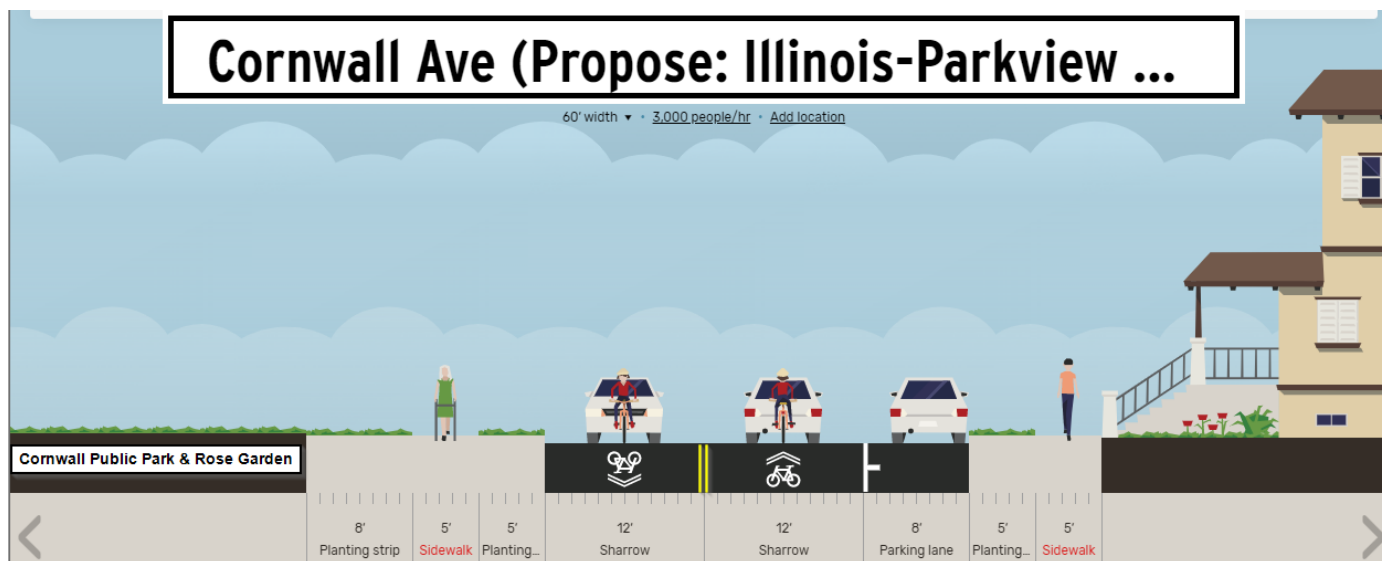
## Existing Conditions – Cornwall Avenue (W. Illinois Street to Parkview Elementary School)

Cornwall Avenue from West Illinois Street to Parkview Elementary School is a local access residential street that measures 34 feet wide and has a 5-foot sidewalk along the east side. The Cornwall Park Rose Garden is located at the northwest corner of the W. Illinois/Cornwall intersection and the Cornwall Community Park is located along the west side of Cornwall Avenue north of West Indiana Street. Non-delineated on-street parking exists on the east side of this local access street (1,500 ADT), which has a posted speed limit of 25 mph, is within a 60-foot wide right-of-way and is lined with residential homes (See below). Some homeowners have encroached into the public right-of-way with landscaping, gardens, etc.



## Proposed Improvements - Cornwall Avenue (W. Illinois Street to Parkview Elementary School)

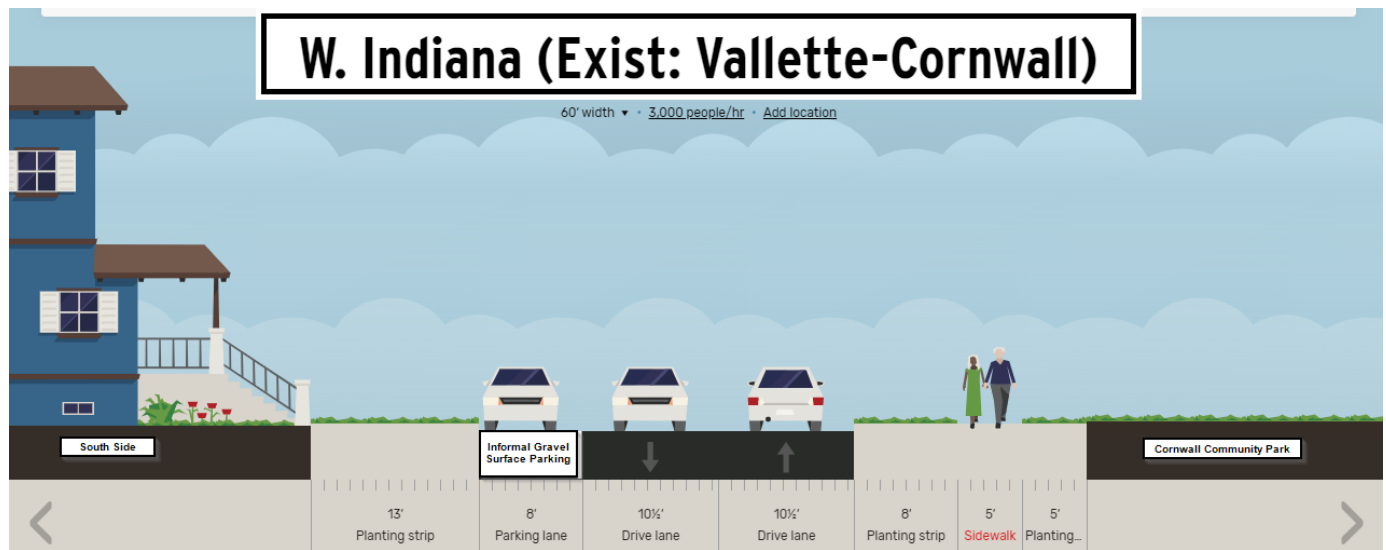
A new 5-foot wide sidewalk with a 3 to 4 foot wide planter strip (where feasible) will be constructed along the west side of Cornwall Avenue from West Illinois Street and the Cornwall Park Rose Garden to West Indiana Street. The Cornwall/W. Indiana intersection will be realigned and a raised crosswalk will be constructed across Cornwall Avenue to the existing sidewalk on the east side of Cornwall.





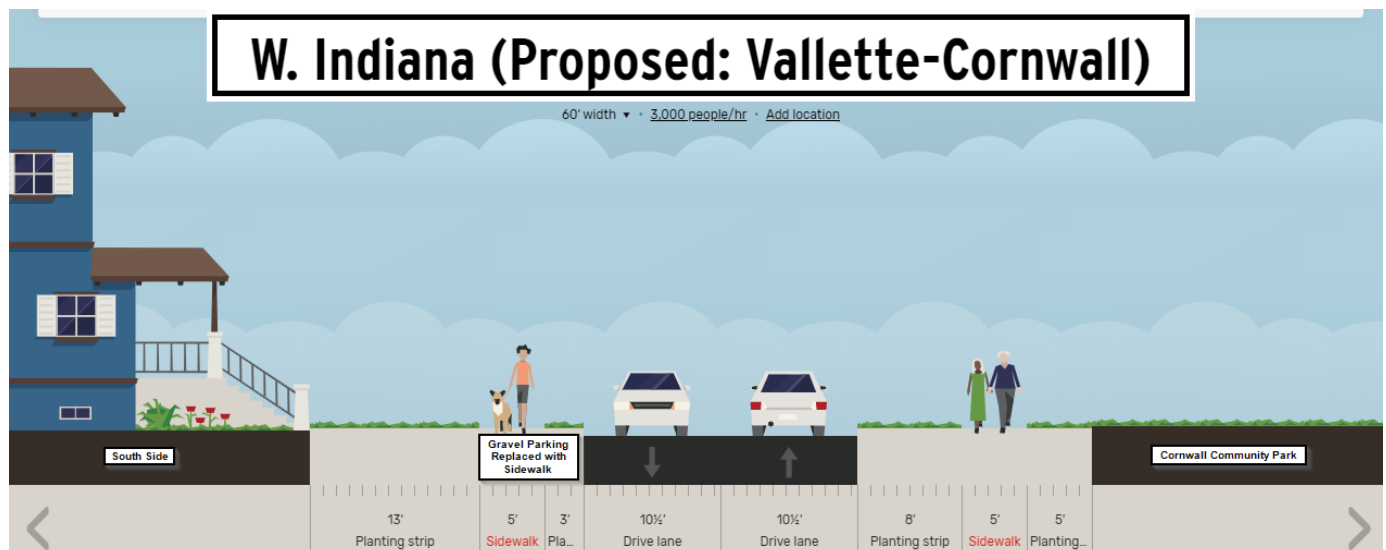
## Existing Conditions – W. Indiana Street (Vallette Street to Cornwall Avenue)

West Indiana Street from Vallette Street to Cornwall Avenue is a local access residential street that measures 20 feet wide and has a 5-foot sidewalk separated from the road by an 8-foot planter strip along the north side. Non-delineated on-street parking exists on the south side of this local access street (1,300 ADT), which has a posted speed limit of 25 mph. Several traffic calming speed humps were constructed on W. Indiana Street and Vallette Street in the mid-2000's and Vallette Street was improved as a Bike Boulevard in 2018. W. Indiana Street is within a 60-foot wide right-of-way abutting the Cornwall Community Park on the north side. The south side is lined with residential homes (See below). Some homeowners have encroached into the public right-of-way with landscaping, gardens, driveways, gravel parking strips, etc.



## Proposed Improvements – W. Indiana Street (Vallette Street to Cornwall Avenue)

Informal gravel parking surfaces along the south side of West Indiana Street from Vallette Street to Cornwall Avenue will be removed and replaced with a new 5-foot wide sidewalk and 3 to 4 foot wide planter strip (where feasible). The Cornwall/W. Indiana intersection will be realigned and a raised crosswalk will be constructed across Cornwall Avenue to the existing sidewalk on the east side of Cornwall, which leads directly to Parkview Elementary School.



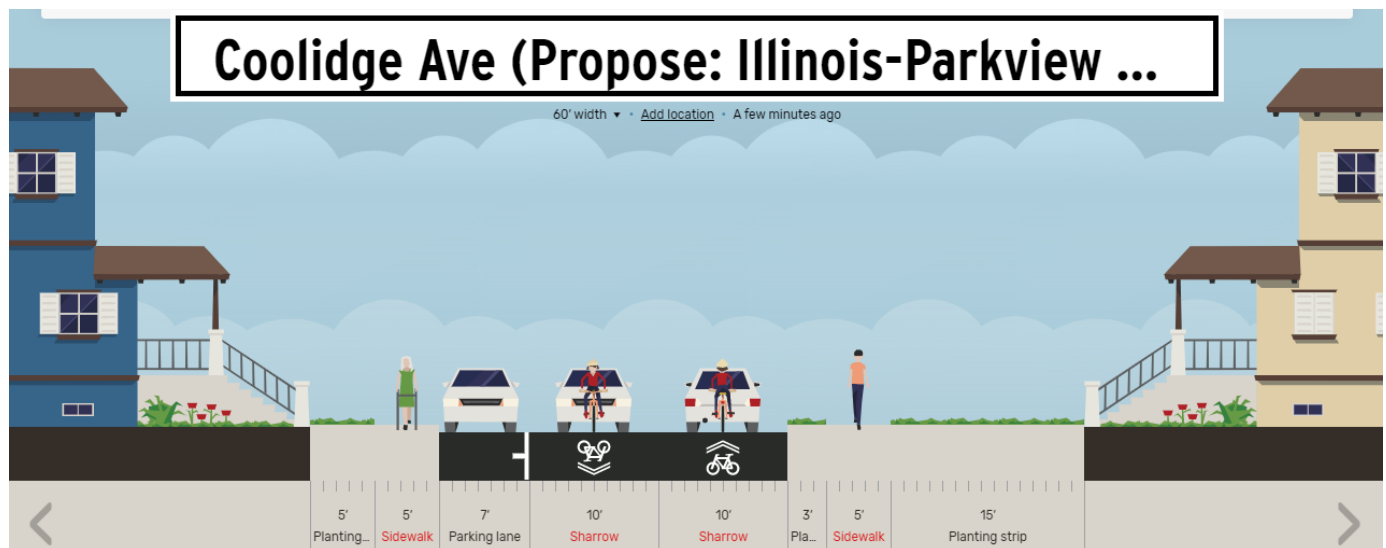
## Existing Conditions – Coolidge Avenue (W. Illinois Street to Parkview Elementary School)

Coolidge Avenue from West Illinois Street to Parkview Elementary School is a local access residential street that measures 27 feet wide and has a 5-foot sidewalk and non-delineated on-street parking along the west side. Traffic volume on this local access street is relatively low (1,500 ADT), but parental vehicle pick-up and drop-off of students occurs both morning and mid-afternoon. The posted speed limit is 25 mph and Coolidge Avenue is within a 60-foot wide right-of-way and is lined with residential homes (See below). Some homeowners have encroached into the public right-of-way with landscaping, gardens, etc.



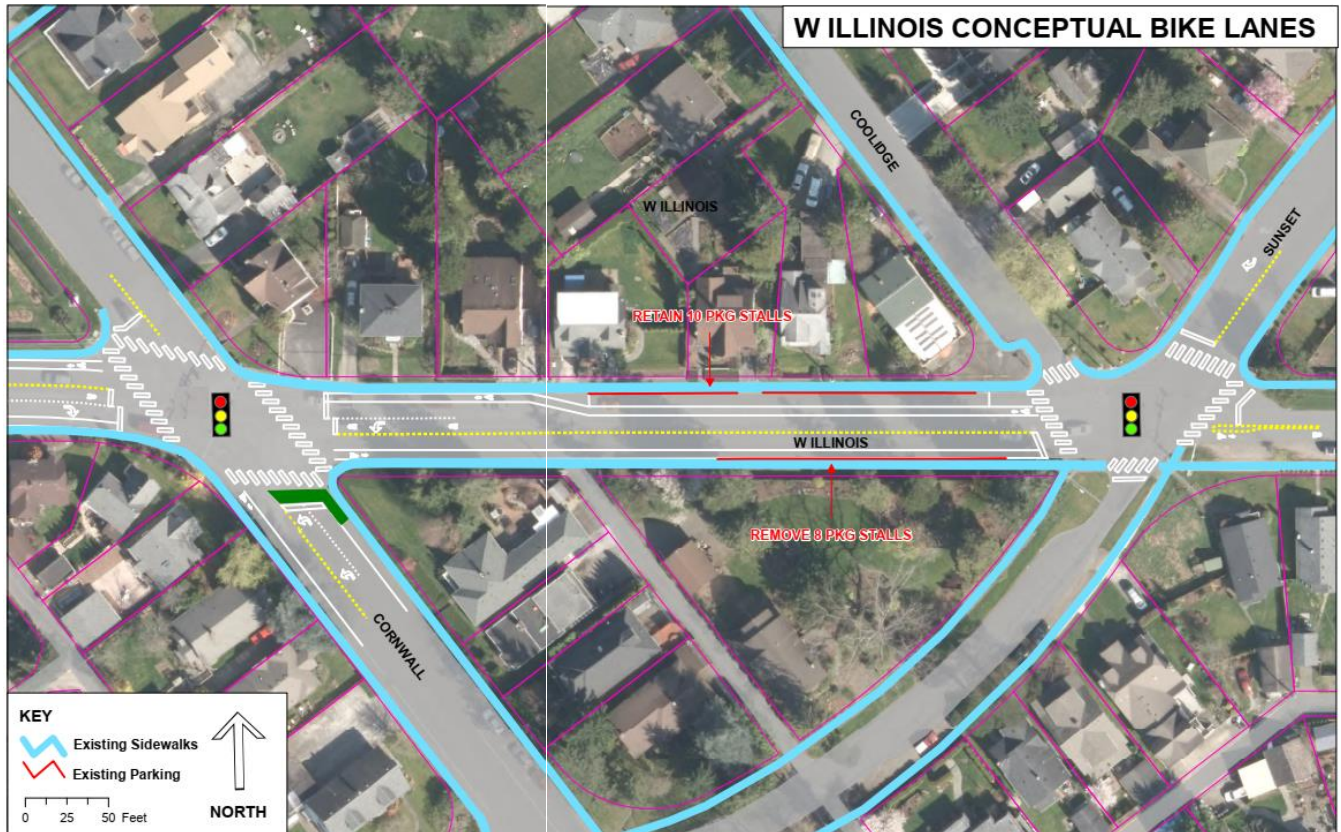
## Proposed Improvements - Cornwall Avenue (W. Illinois Street to Parkview Elementary School)

A new 5-foot wide sidewalk with a 3 to 4 foot wide planter strip (where feasible) will be constructed along the east side of Coolidge Avenue from the West Illinois/Sunset intersection to Parkview Elementary School. ADA upgrades and new crosswalks will be constructed at the West Illinois/Sunset intersection.

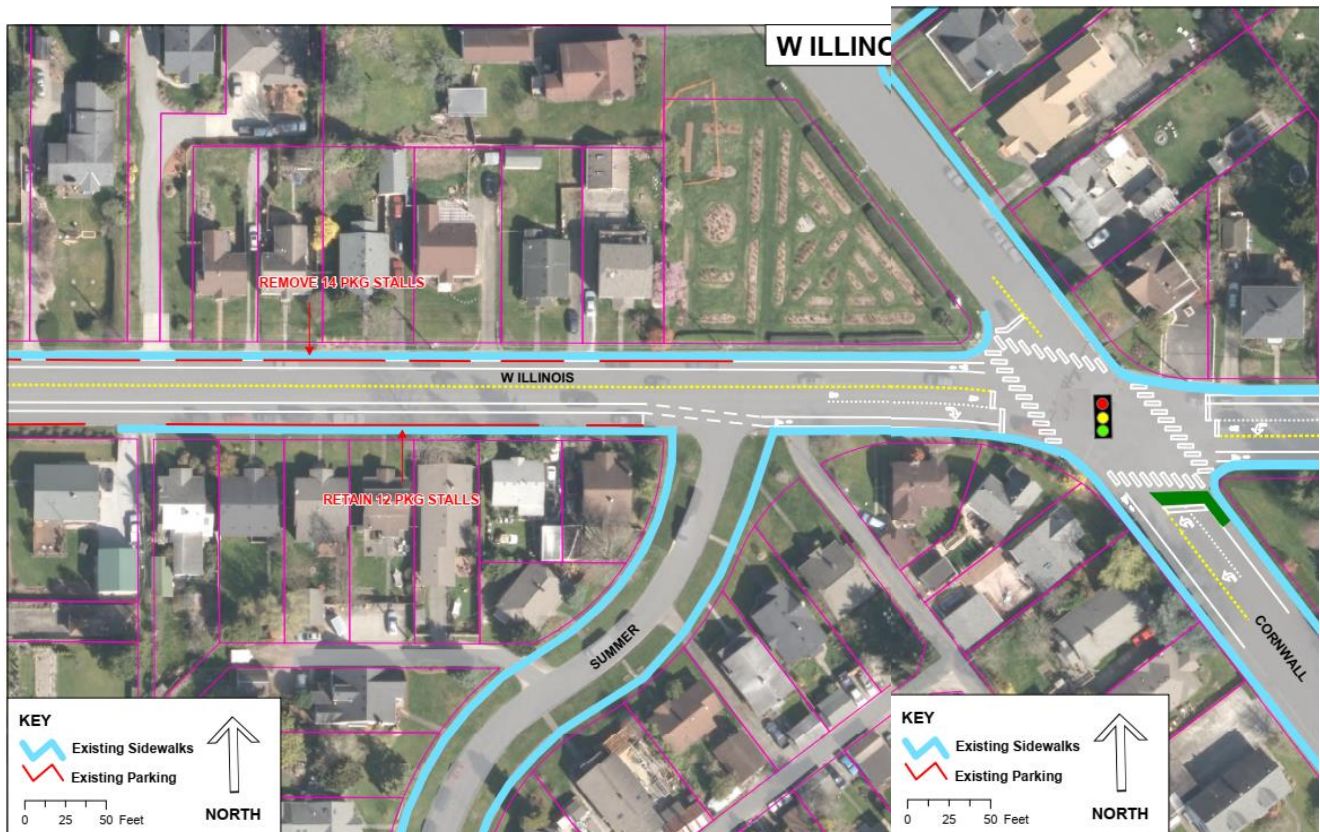




## Plan Sheets for Parkview ES Safe Route to School Improvements (East to West)

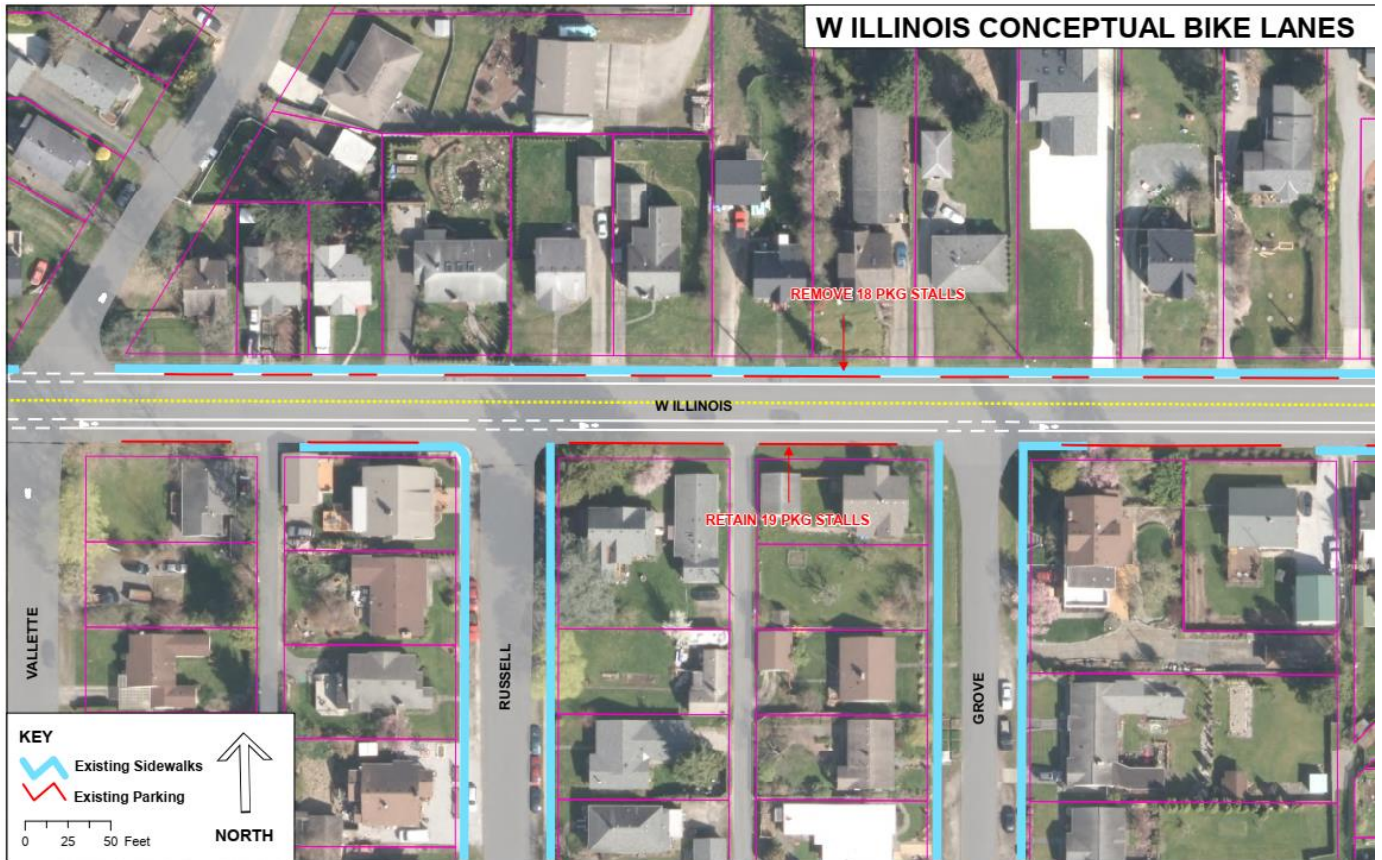


**Proposed Improvements on W. Illinois Street (Sunset to Cornwall)**

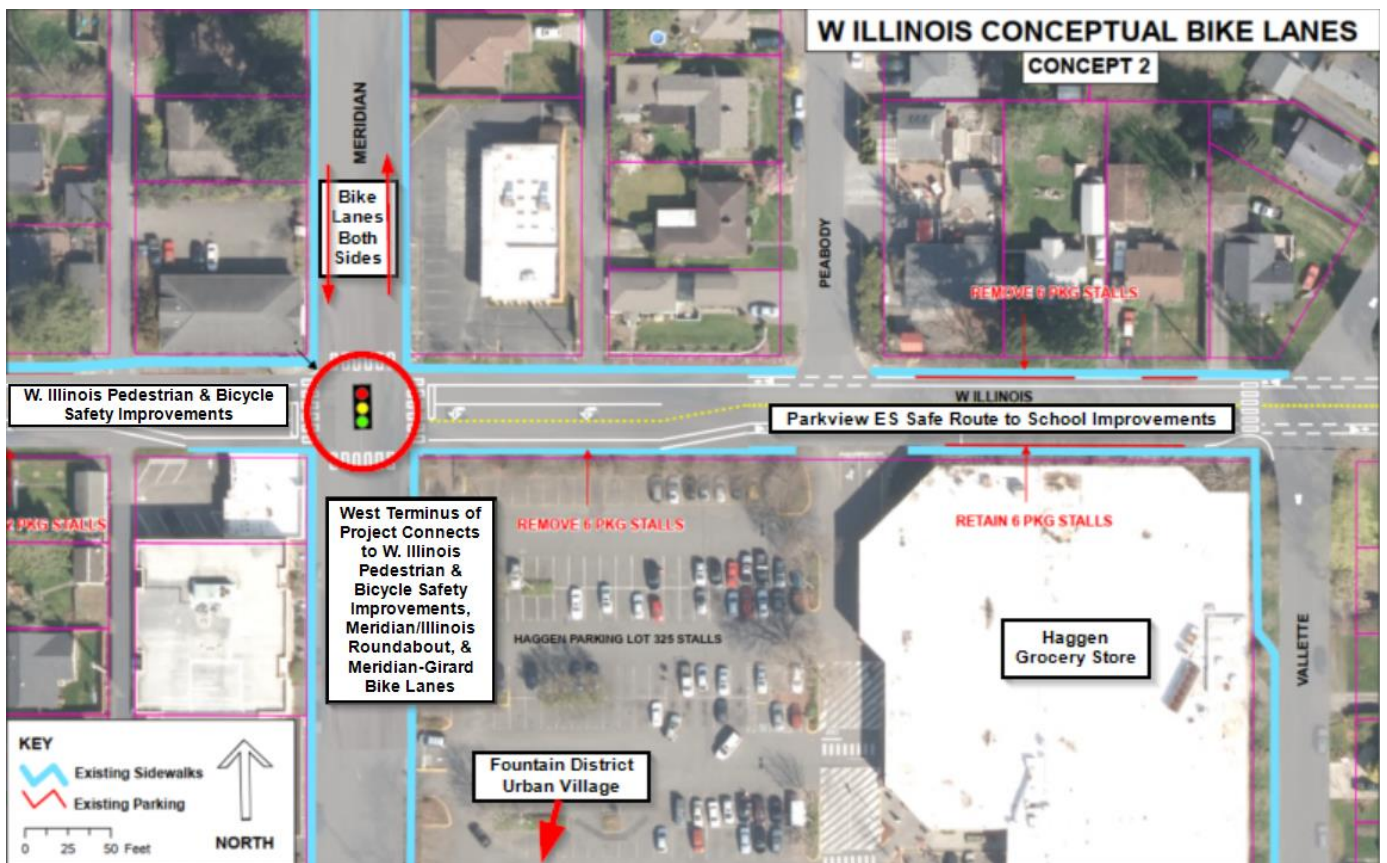


**Proposed Improvements on W. Illinois Street (Cornwall to Meridian – Sheet 1)**





**Proposed Improvements on W. Illinois Street (Cornwall to Meridian – Sheet 2)**



**Proposed Improvements on W. Illinois Street (Cornwall to Meridian – Sheet 3)**



The western terminus of the Parkview ES Safe Route to School Improvements connects to:

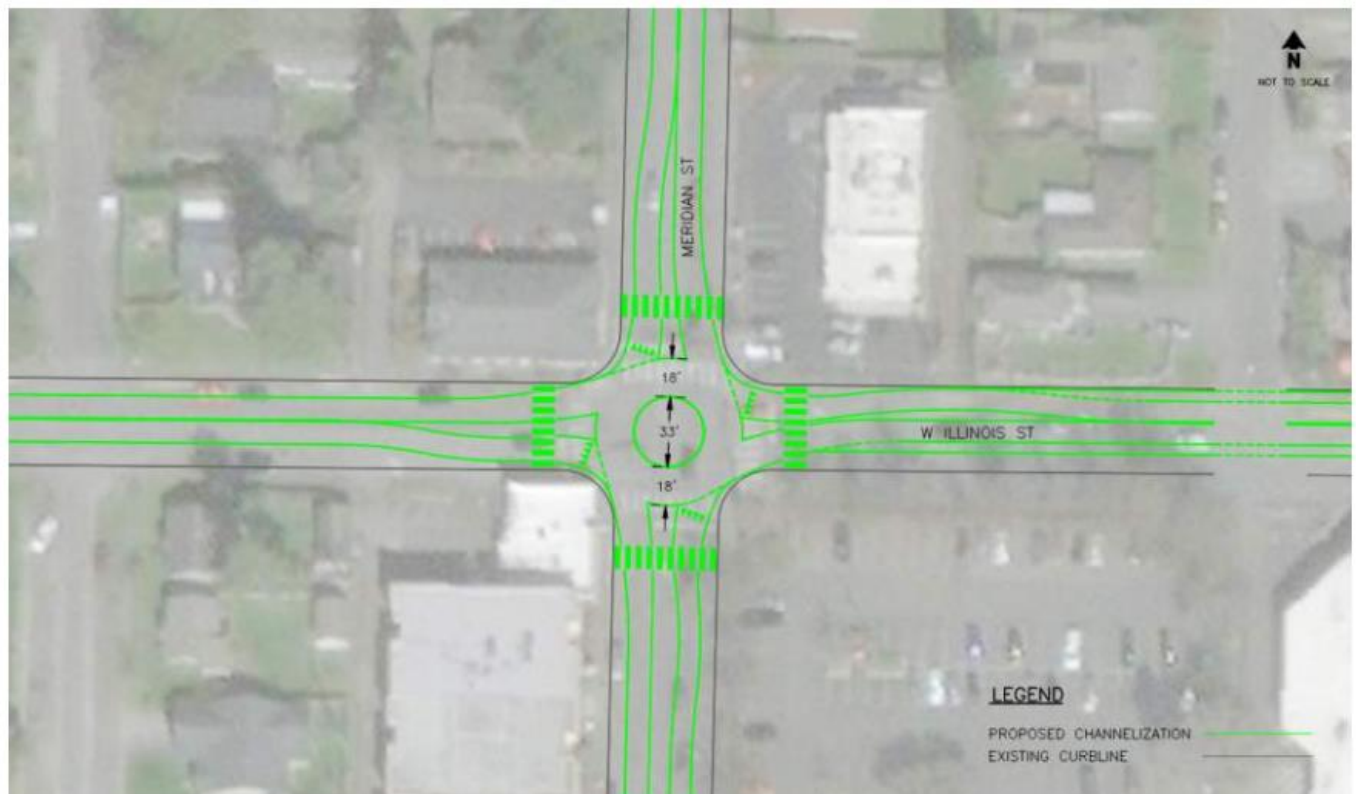
- The W. Illinois Pedestrian & Bicycle Safety Improvements;
- The Meridian/W. Illinois Roundabout;
- The Meridian-Girard Bike Lanes; and
- The Fountain District Urban Village.





## Concept 1. West Illinois Street and Meridian Street Compact Roundabout

Concept 1 at the West Illinois Street and Meridian Street intersection replaces the existing traffic signal with a compact single-lane roundabout to address poor intersection operations under 2042 future traffic volumes. A conceptual layout of the Concept 1 improvements at the West Illinois Street/Meridian Street intersection are shown on Figure 9.



**Bellingham is applying for a TIB grant to construct a roundabout at W. Illinois/Meridian in 2021, as well as locally funded bike lanes on the Meridian-Girard corridor (see images on previous page)**