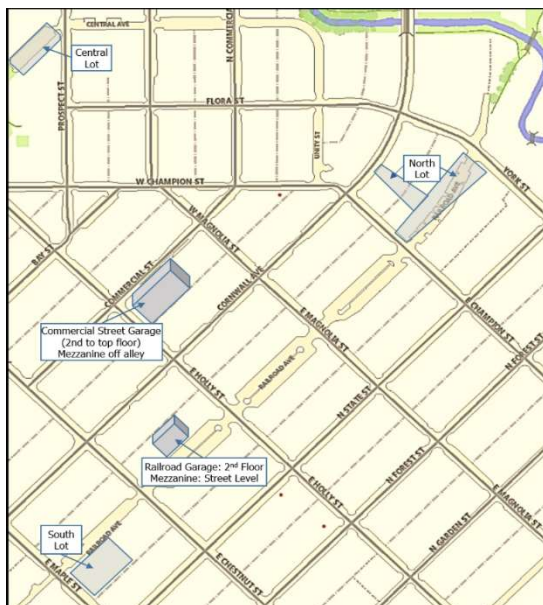




Permit Parking Locations and Rates

Effective May 1, 2022

<u>Location</u>	<u>Monthly Rate</u>
<u>Rates for Off-street Permit Parking:</u>	
Commercial Street Garage (1300 Commercial)	
Floors 2-5	\$70.00
Mezzanine (alley access)	\$95.00
Railroad Avenue Garage (1215 Railroad)	
Floor 2	\$70.00
Street Level	\$95.00
South Lot/Depot Market Lot (1100 Railroad)	\$65.00
Central Avenue Lot (West of Prospect)	\$65.00
<u>Rates for On-street Permit Parking:</u>	
North Railroad Lot (1500 block Railroad Ave)	\$45.00
McKenzie Avenue Lot (1000 block McKenzie Ave)	\$65.00
*No charge after 6pm Monday – Friday until 11am the following day. No charge on weekends.	



Contact us for availability or if you'd like to learn more. Some of the locations are full and have waitlists.

**City of Bellingham
Parking Services
210 Lottie Street
Bellingham, WA 98225**

Email parksmart@cob.org or call 360-778-7780