

Cordata Community Park Master Plan



City of
Bellingham

January 19, 2017

Cordata Community Park Agenda



- Meeting Purpose
 - **Show-n-Tell final park master plan design**
- Housekeeping
- Introductions
- Project Schedule
- Brief Presentation
- Open discussion and viewing of plans
- Adjourn 8PM



Cordata Community Park

Housekeeping

- **Meeting runs 6PM-8PM**
- **Meeting format: Open-house style, feel free to enter comments on comment forms or verbally to park staff.**
- **Vote for a park name**



Cordata Community Park Project Schedule

- ✓ **Concept Plans Phase Public Meeting #1** July 2016
- ✓ **Preferred Concept Plan Public Meeting #2** October 2016
- ✓ **Final Park Master Plan Public Meeting #3** January 2017
- **Cordata Design Review Committee** February 2017
- **Parks/Rec Advisory Board approval** March 2017
- **Comprehensive Plan Amendment** 2017
- **Rezone Park** 2017
- **City Council Adoption** 2017
- **Acquire Wetland A Parcel** Uncertain

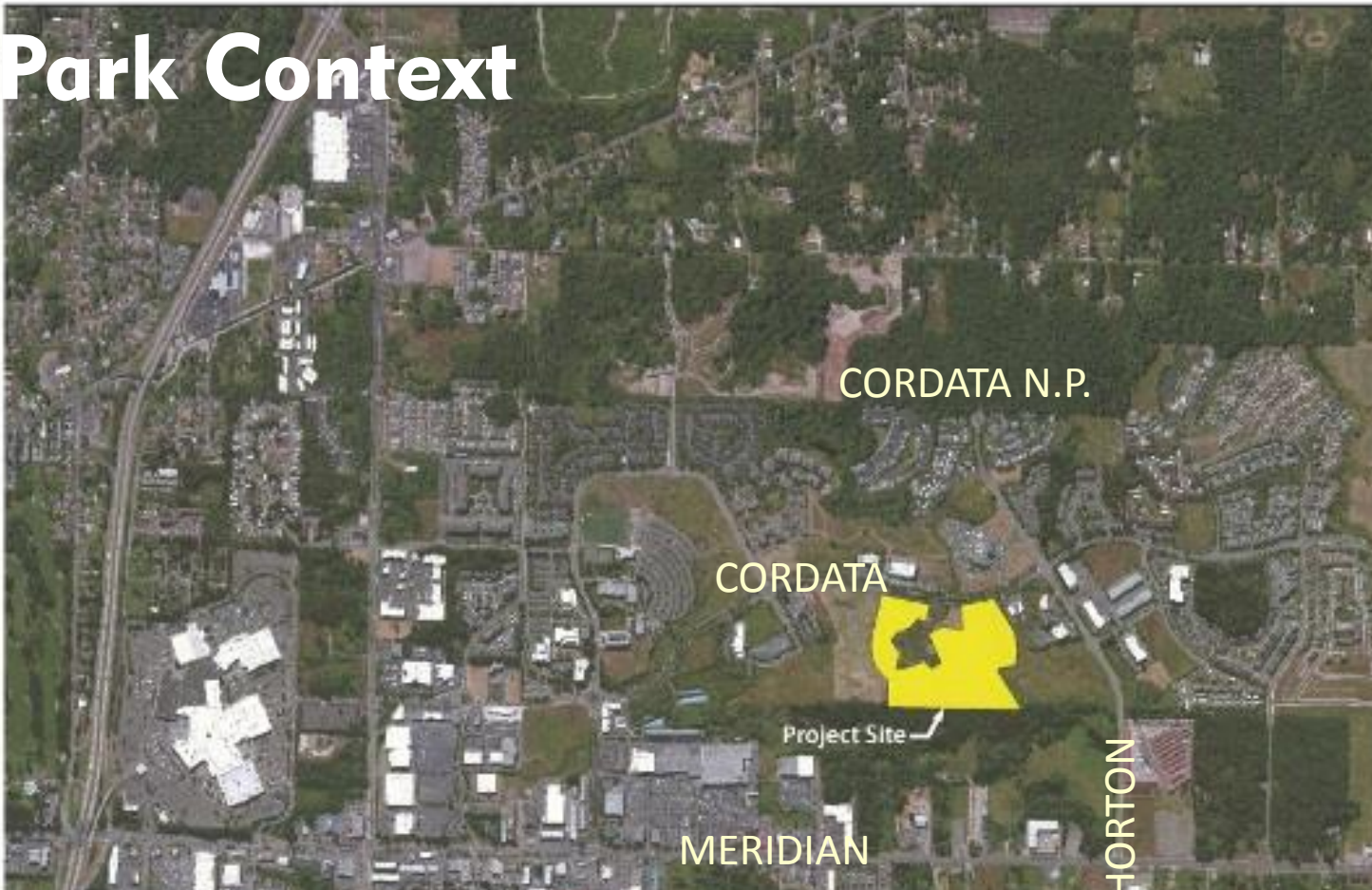
Park Context

Cordata Community Park Master Plan

City of Bellingham Parks
and Recreation

Site Analysis

Vicinity Aerial



Area: 20.59 acres + 4.24 acres (CBPA Wetland A)

Date Acquired: 2015 (20.59 acres only)

Cost: \$3,620,000 Greenways Three Funds

Cordata Neighborhood

Land use falls under Planned Urban

Zoning: Commercial/Industrial/Residential Multi (Areas 10 and 11) PUD

Critical Areas and buffers in the Park: 17.6 acres

City of
Bellingham
WASHINGTON



Robert W. Droll
Landscape Architect, PS
4405 7th Ave SE, Suite 201
Lacey, WA 98503
360.456.3813

Cordata Community Park Master Plan

City of Bellingham Parks and Recreation

FINAL MASTER PLAN

Legend

- ① Parks Ops Maintenance Building
- ② Outdoor Exercise Equipment
- ③ Parkour Course
- ④ Pump Track
- ⑤ Park Core-Playgrounds, Large Shelter, Restrooms
- ⑥ Parking Lot- 51 Spaces + 2 for Maintenance
- ⑦ Enhanced Pedestrian Park Access from Cordata Parkway
- ⑧ Covered Stage w/ Open Grass Seating
- ⑨ Open Play Field w/ Picnic Area
- ⑩ Open Play Area w/ Shelter and Picnic Tables
- ⑪ Sport Courts- Basketball and Pickleball Courts
- ⑫ Pavilion w/ Restrooms and Plaza- Outdoor Children's Activity Area
- ⑬ Parking Lot- 50 Spaces
- ⑭ Emergency Vehicle and Maintenance Entrance/Exit
- ⑮ Future Access Road
- ⑯ Cordata Business Park Association Property
- ⑰ Connections to Future Off Site Trails
- ⑱ Trail Crossing Through CPBA Property is Dependent Upon the Transfer of Property to the City or CBPA Granting Access Rights



Robert W. Droll, Landscape Architect
360.456.3813

Cordata Community Park Master Plan

City of Bellingham Parks and Recreation

WETLANDS AND BUFFERS

Legend

- Wetland
- Wetland Buffer
- Unencumbered Area
- Potential Mitigation Area

Buffer Impact	0.16
Direct Wetland Fill	0.13
Indirect Wetland Impact	2.33



Robert W. Droll, Landscape Architect
360.456.3813

**FINAL MASTER PLAN
Legend**

- 1 Parks Ops Maintenance Building
- 2 Outdoor Exercise Equipment
- 3 Parkour Course
- 4 Pump Track
- 5 Park Core-Playgrounds, Large Shelter, Restrooms
- 6 Parking Lot- 51 Spaces + 2 for Maintenance
- 7 Enhanced Pedestrian Park Access from Cordata Parkway
- 8 Covered Stage w/ Open Grass Seating
- 9 Open Play Field w/ Picnic Area
- 10 Open Play Area w/ Shelter and Picnic Tables
- 11 Sport Courts- Basketball and Pickleball Courts
- 12 Pavilion w/ Restrooms and Plaza- Outdoor Children's Activity Area
- 13 Parking Lot- 50 Spaces
- 14 Emergency Vehicle and Maintenance Entrance/Exit
- 15 Future Access Road
- 16 Cordata Business Park Association Property
- 17 Connections to Future Off Site Trails
- 18 Trail Crossing Through CPBA Property is Dependent Upon the Transfer of Property to the City or CBPA Granting Access Rights

Details, Variables & Plan Flexibility

- Stormwater treatment and flow control
- Sanitary sewer connection(s)
- Final location of south trail connection depends on further discussion with adjacent developer
- Cordata Design Review Committee



Cordata Community Park Pavilion



Next Steps

- Cordata Design Review Committee Feb 2017
- Parks/Rec Advisory Board approval March 2017
- City Council Adoption March 2017
- Comprehensive Plan Amendment 2017
- Rezone Park 2017
- Transfer Ownership of Wetland A Parcel Uncertain

Cordata Community
Park Master Plan

Bellingham
ASSOCIATION



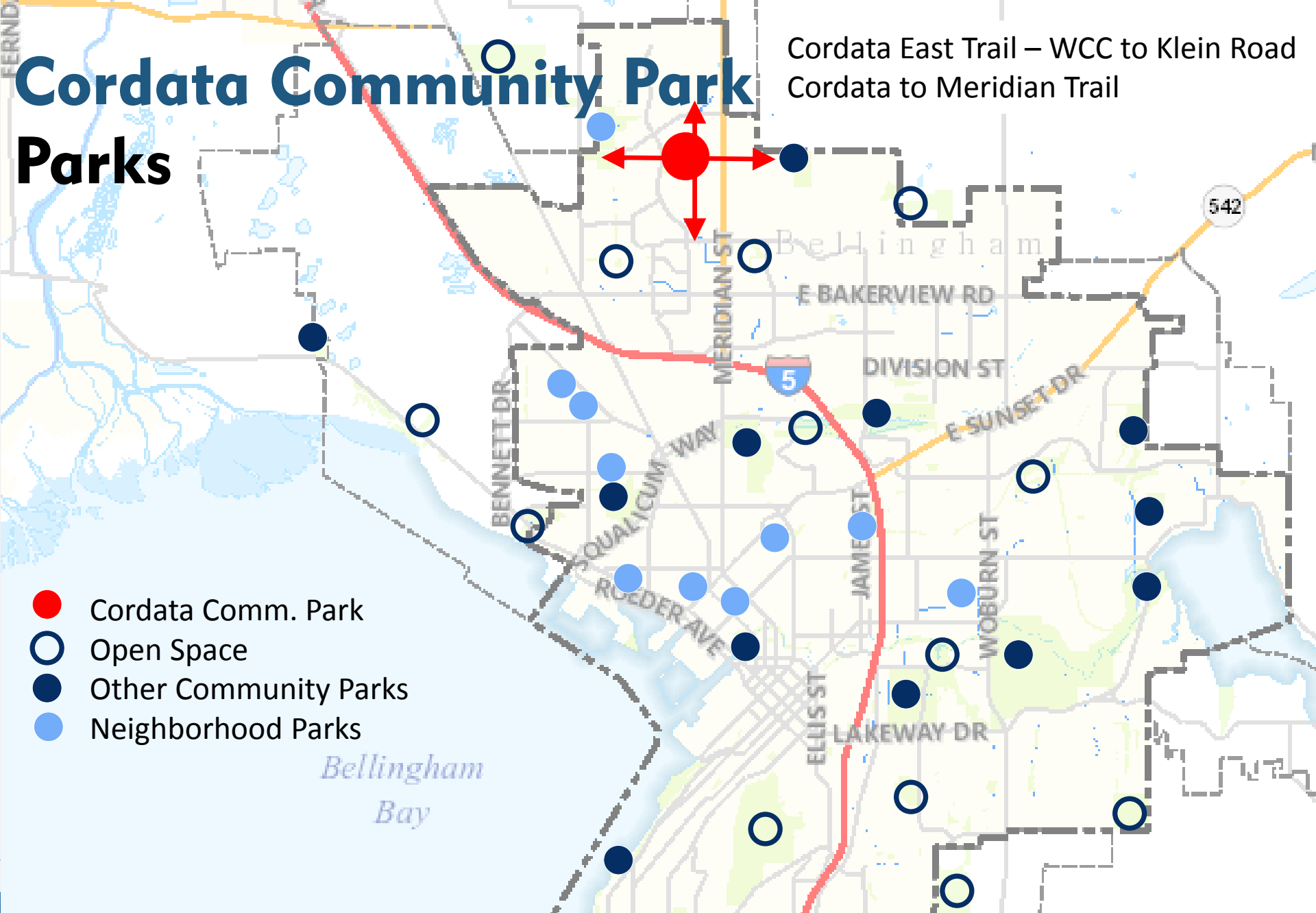
CORDATA COMMUNITY PARK MASTERPLAN

Presented by: Jonathan Schilk & Don Campbell
Parks Design and Development Division
(360) 778 – 7000 jschilk@cob.org

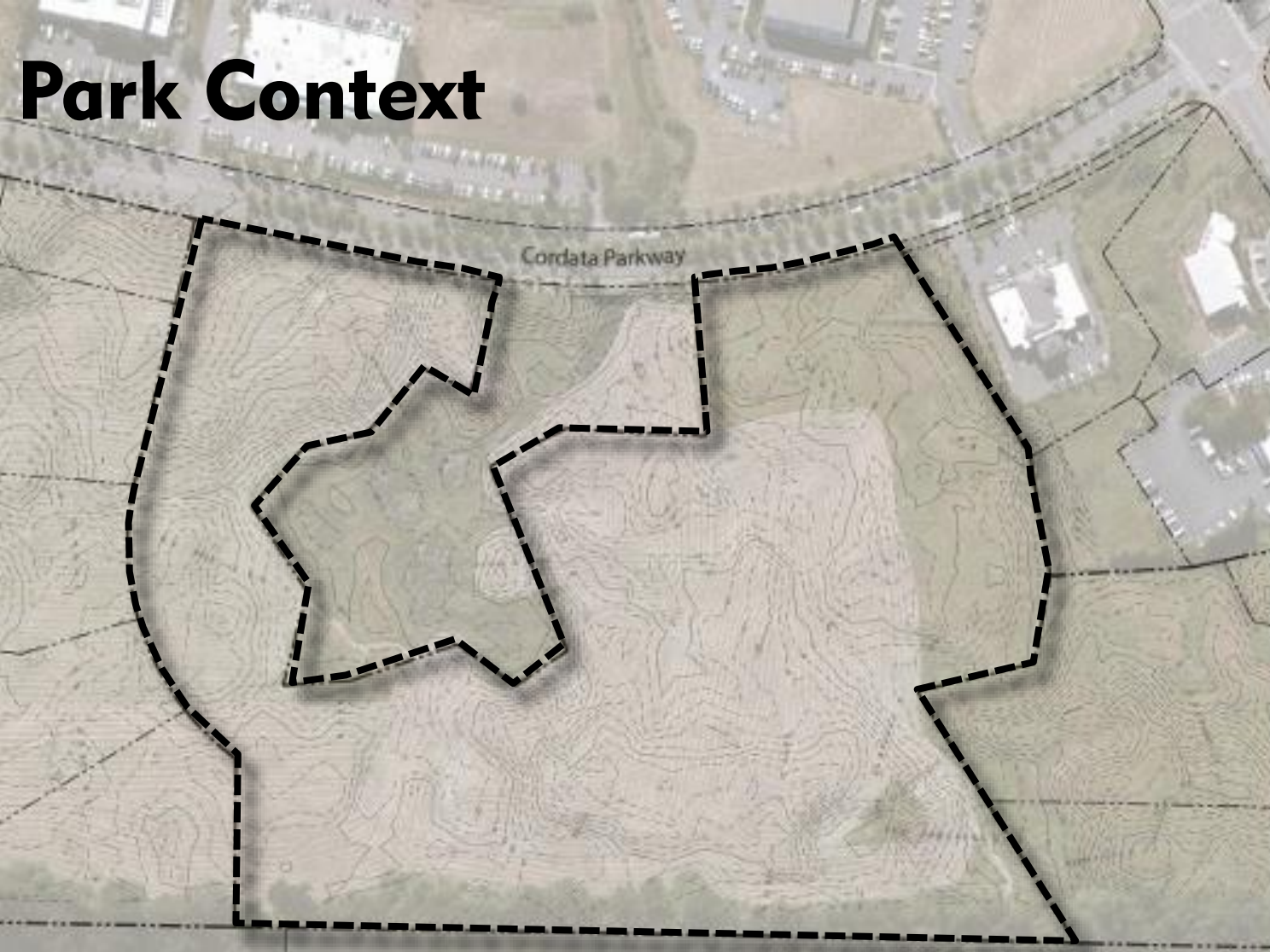
<https://www.cob.org/services>



City of
Bellingham



Park Context



Generally naturally occurring rolling topography with wet depressions. A few berm shaped features exist.



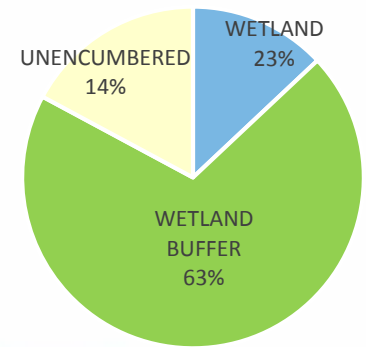
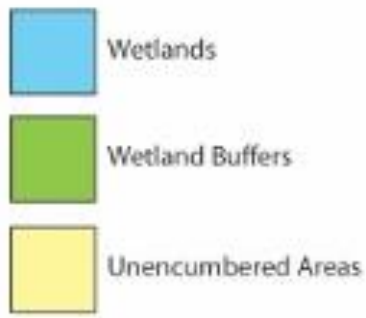
Park Context

Cordata Community Park Master Plan

City of Bellingham Parks and Recreation

Site Analysis

Wetlands and Buffers



City of Bellingham WASHINGTON

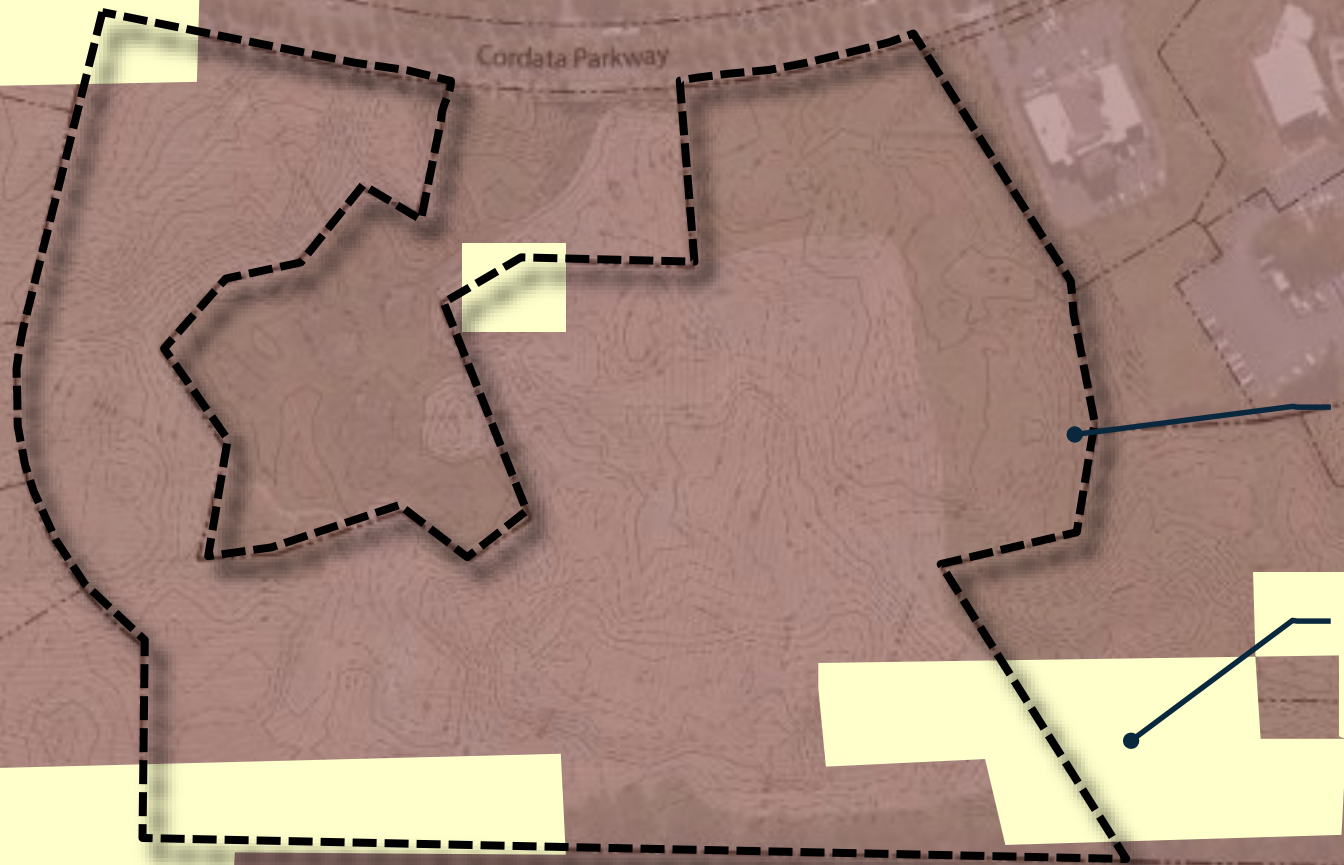
Robert W. Droll
Landscape Architect, PS
4405 7th Ave SE, Suite 203
Lacey, WA 98503
360.456.3813

Cordata Community Park Master Plan

City of Bellingham Parks and Recreation

Site Analysis

Archaeological Predictive Model



Brown: Moderate Probability

Yellow: Low Probability

City of Bellingham WASHINGTON

Robert W. Droll
Landscape Architect, P5
4405 7th Ave SE, Suite 203
Lacey, WA 98503
360.456.3813

Cordata Community Park

Site Photos



Cordata Community Park Design Considerations

- **Identify & Locate Desired Park Uses**
- **Place Making/Inviting Spaces**
- **Balancing Programming and Critical Areas**
- **Promote Health, Happiness & Well Being**
- **Crime Prevention thru Environmental Design**
- **Maintain Views, as possible**
- **Cohesive, Common Design Theme**



Cordata Community Park Master Plan

City of Bellingham Parks and Recreation

Concept Plans

Option #1



City of Bellingham WASHINGTON

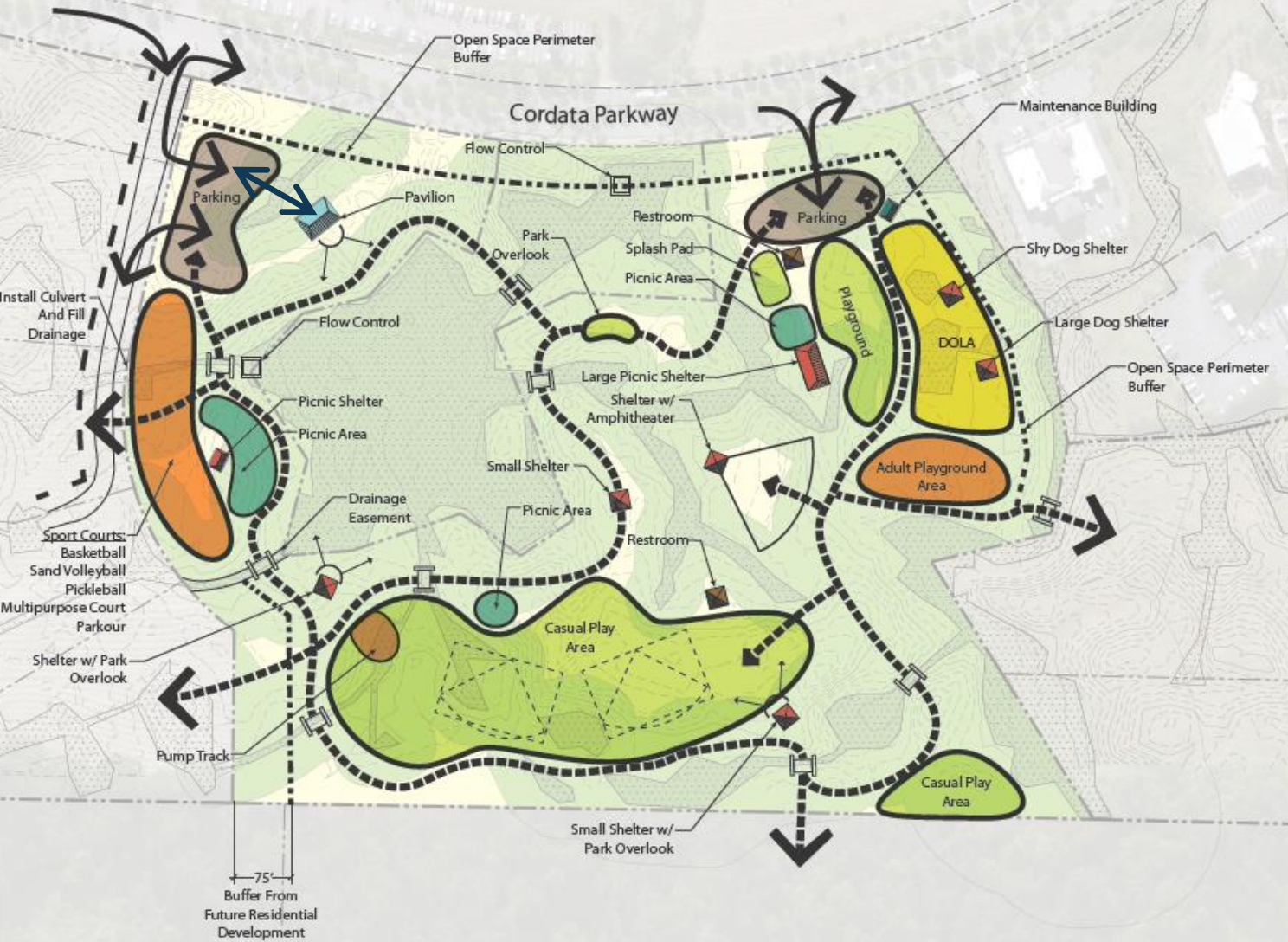
Robert W. Droll
Landscape Architect, PS
4405 7th Ave SE, Suite 203
Lacey, WA 98503
360.456.3813

Cordata Community Park Master Plan


City of Bellingham Parks and Recreation

Concept Plans

Option #2



City of
Bellingham
WASHINGTON

 Robert W. Droll
Landscape Architect, PS
4405 7th Ave SE, Suite 203
Lacey, WA 98503
360.456.3813

Cordata Community Park Master Plan

City of Bellingham Parks and Recreation

Preferred Conceptual Master Plan



Legend

- Rolling, rough lawn play areas mowed less frequently
- Mowed lawn for active play. Higher quality lawn than rolling, casual play areas.
- Mowed Lawn with Picnic Tables and benches

Note

Central Wetland: Potential enhancement stormwater capacity. Start discussing what that means.

Cordata Community Park Master Plan

City of Bellingham Parks and Recreation

Preferred Conceptual Master Plan



Legend

- Rolling, rough lawn play areas mowed less frequently
- Mowed lawn for active play. Higher quality lawn than rolling, casual play areas.
- Mowed Lawn with Picnic Tables and benches
- Connection to Existing Trails

Note

Central Wetland: Potential enhancement stormwater capacity. Start discussing what that means.

Cordata Community Park

Park Facilities



Cordata Community Park Park Facilities



FENCED OFF
LEASH AREA



SK8 DOT



PICKLEBALL



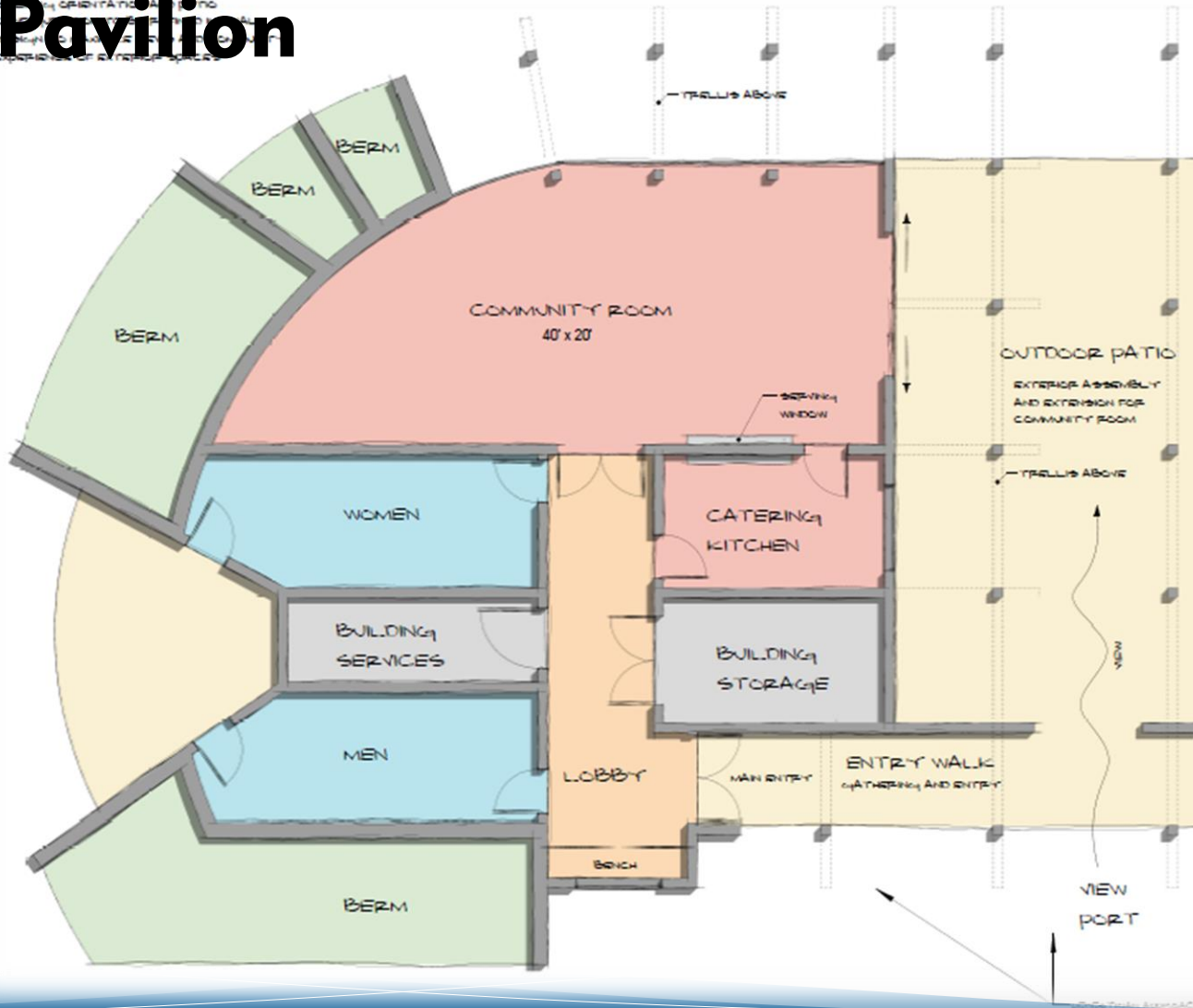
SK8 DOT



Cordata Community Park

Pavilion

NOTE:
1. SEE ORIENTATION
2. SEE SITE PLAN
3. SEE SECTION
4. SEE ELEVATION



Cordata Community Park Pavilion

City of Bellingham Parks and Recreation

Concept Plans

Option #1

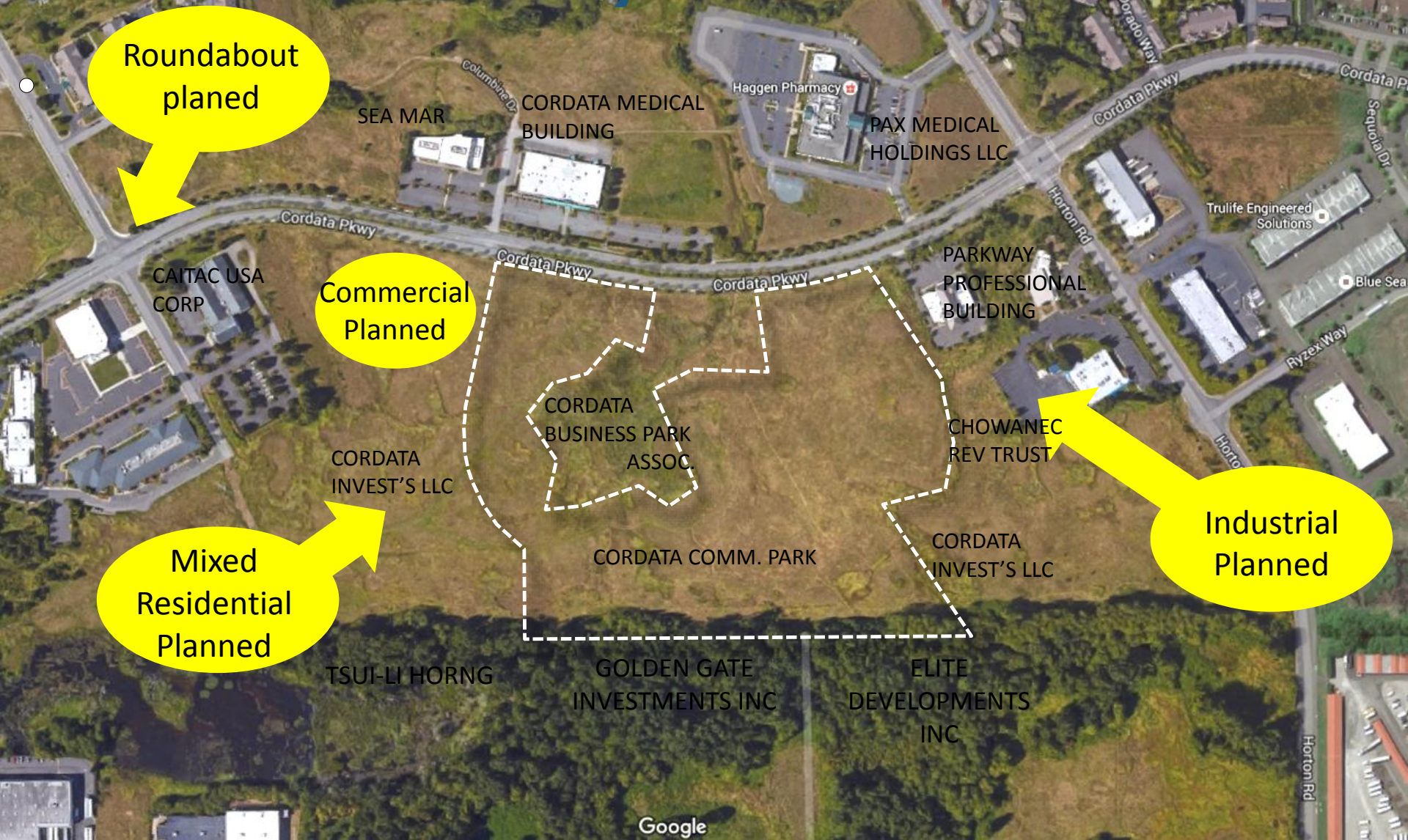
City of
Bellingham
WASHINGTON



Robert W. Droll
Landscape Architecture, PC
4405 7th Ave SE, Suite 203
Lacey, WA 98503

RMC ARCHITECTS
1000 1st Ave SE, Suite 200
Lacey, WA 98503

Cordata Community Park Context



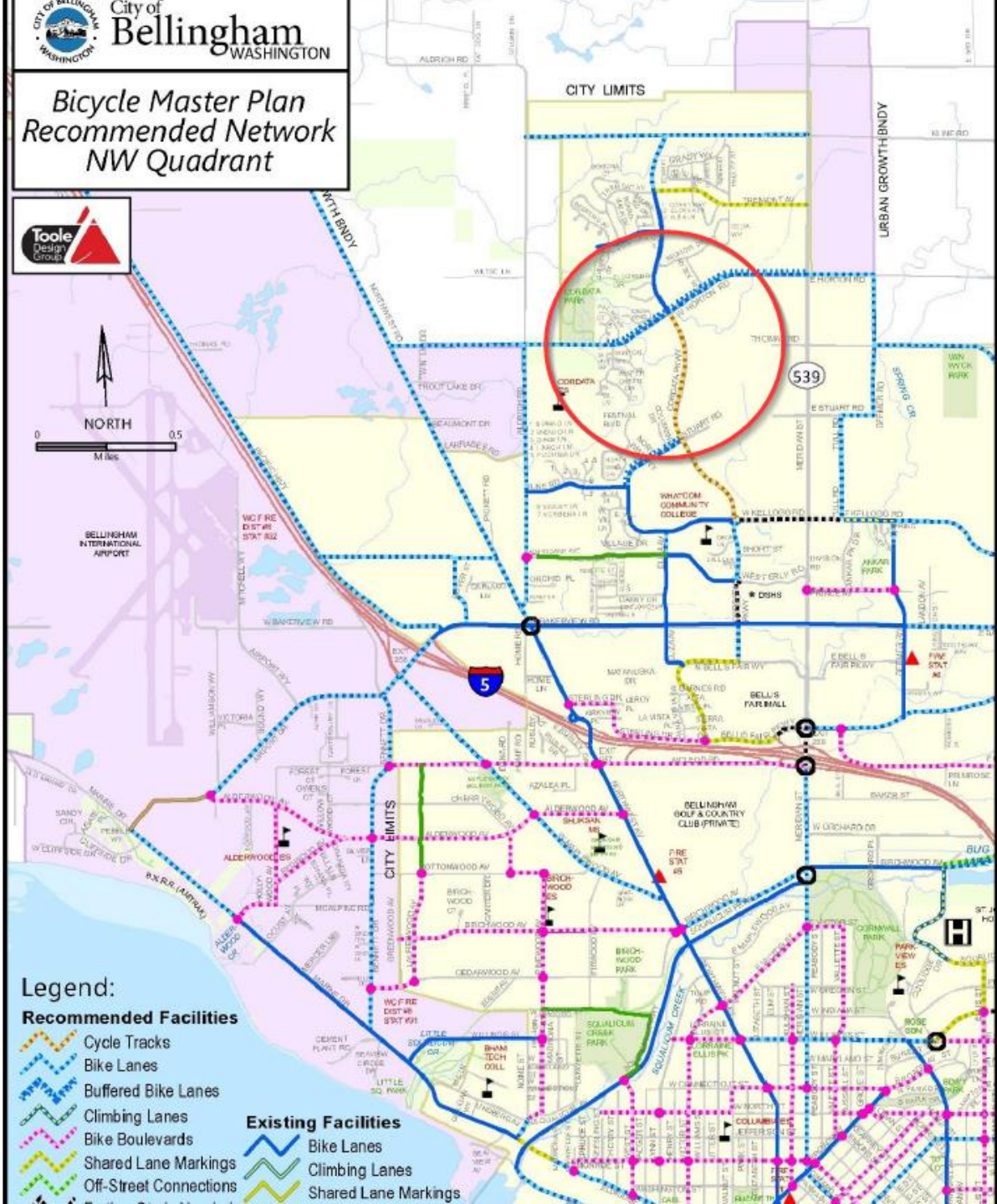
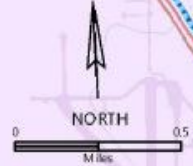
Roundabout planned

Commercial Planned

Mixed Residential Planned

Industrial Planned

Bicycle Master Plan Recommended Network NW Quadrant



Legend:

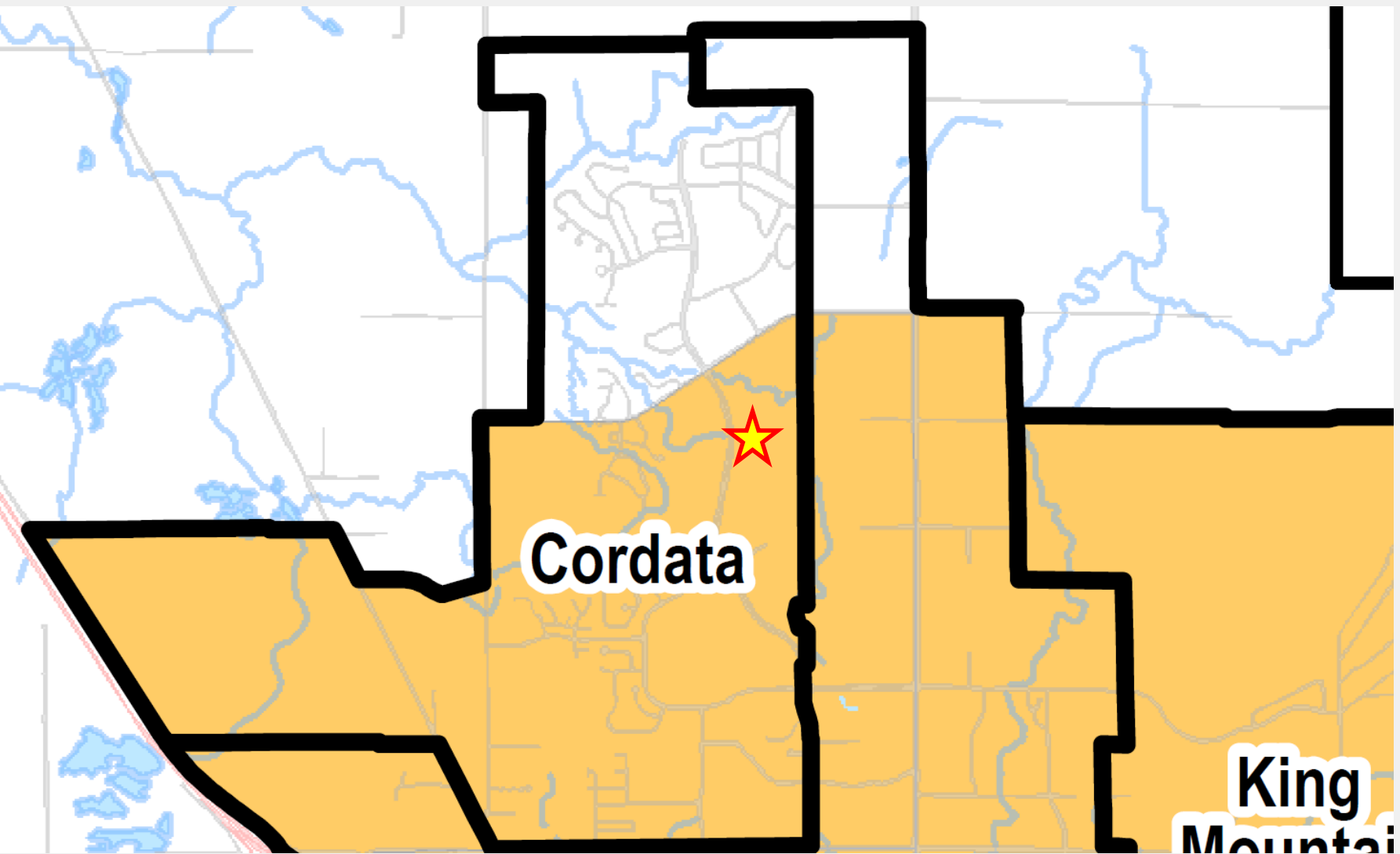
Recommended Facilities

- Cycle Tracks
- Bike Lanes
- Buffered Bike Lanes
- Climbing Lanes
- Bike Boulevards
- Shared Lane Markings
- Off-Street Connections

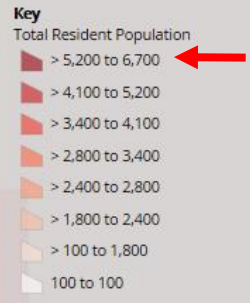
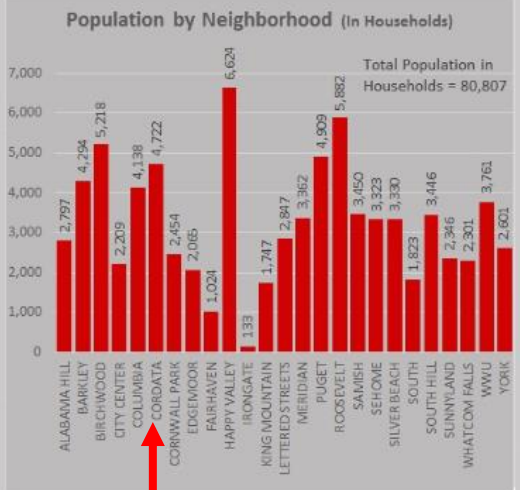
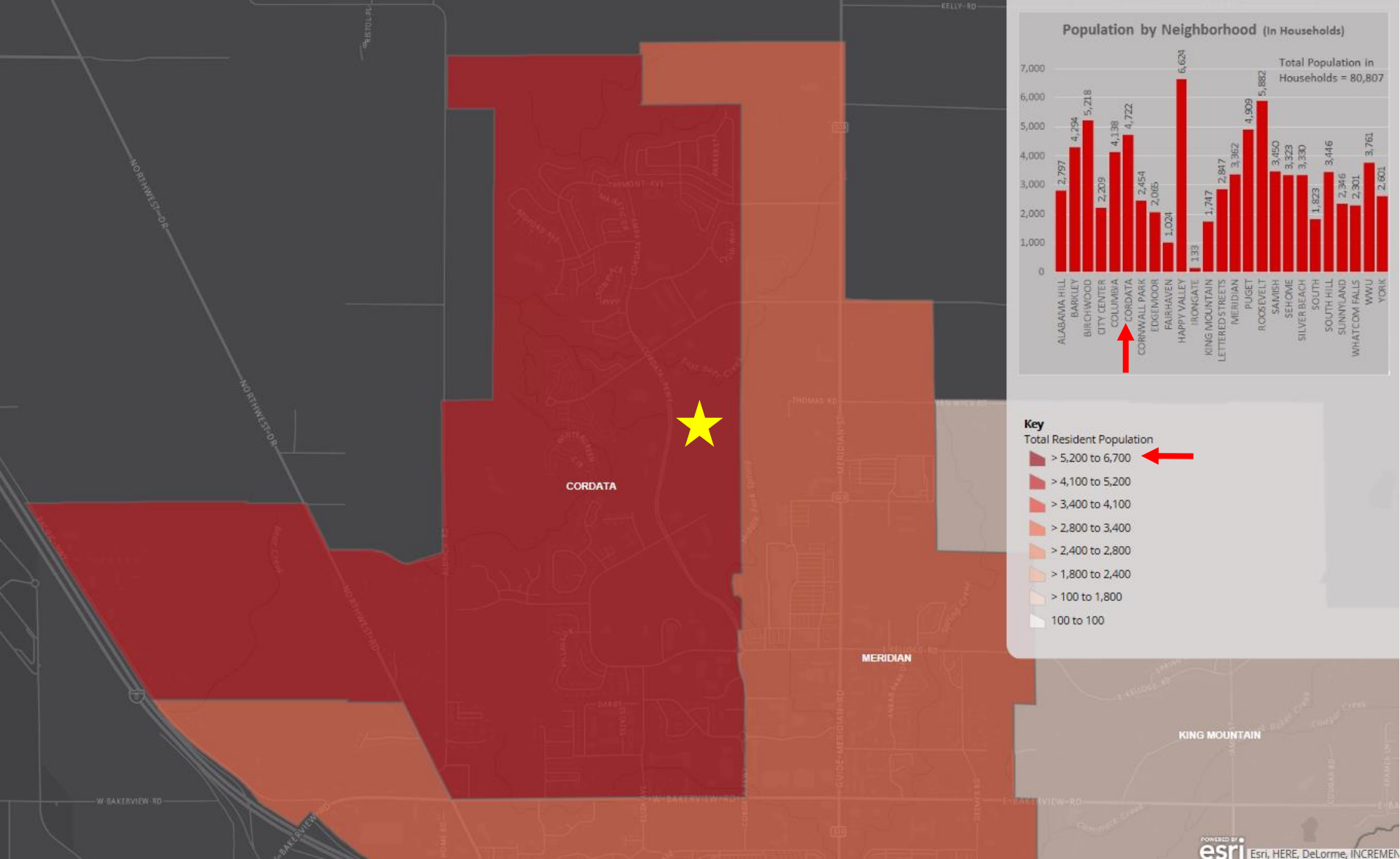
Existing Facilities

- Bike Lanes
- Climbing Lanes
- Shared Lane Markings

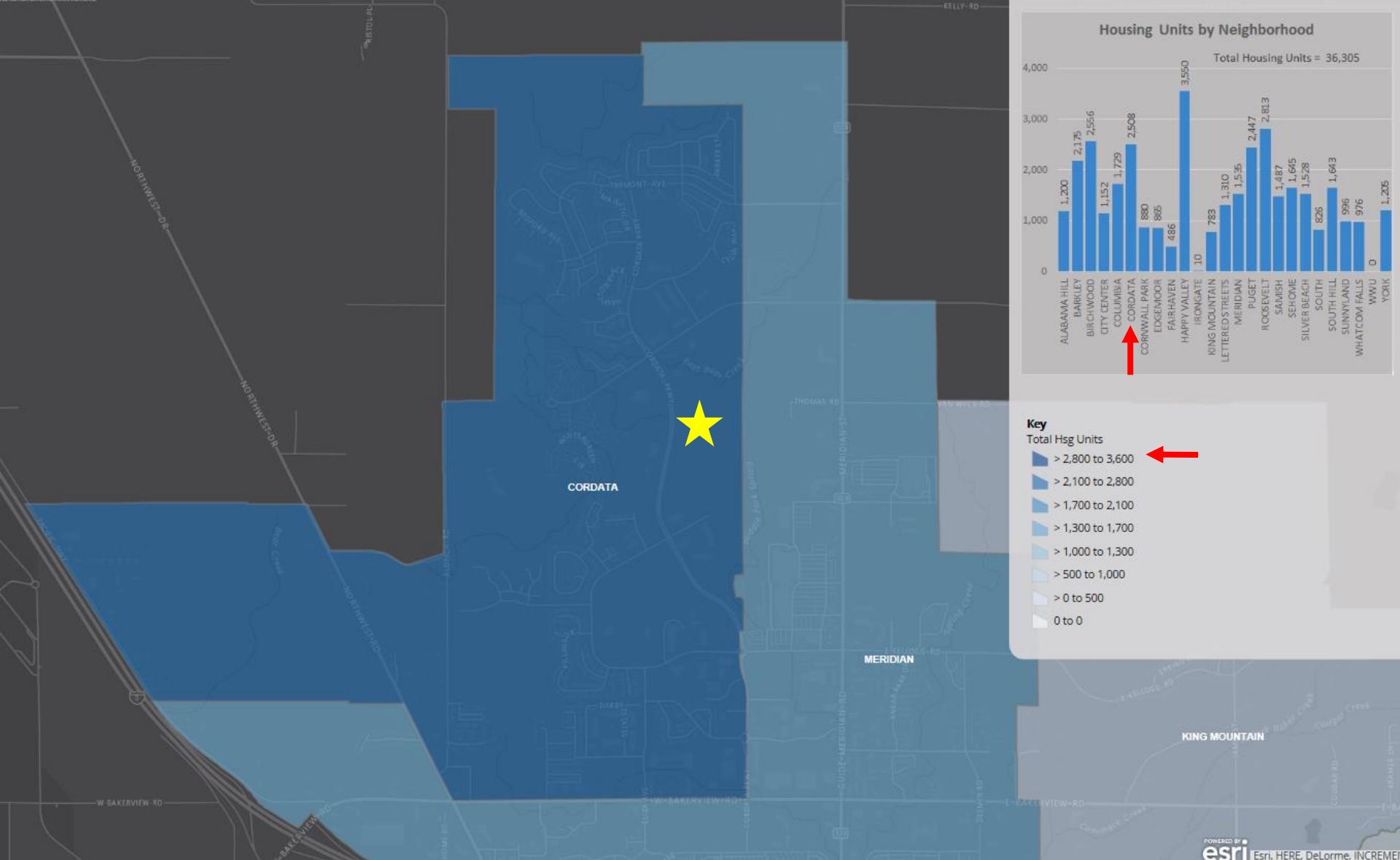
Subject	Number	Percent
HISPANIC OR LATINO AND RACE		
Total population.....	80,885	100.0
Hispanic or Latino.....	5,665	7.0
White alone.....	2,745	3.4
Black or African American alone.....	53	0.1
American Indian and Alaska Native alone.....	124	0.2
Asian alone.....	49	0.1
Native Hawaiian and Other Pacific Islander alone..	13	0.0
Some other race alone.....	2,067	2.6
Two or more races alone.....	614	0.8
Not Hispanic or Latino.....	75,220	93.0
White alone.....	65,907	81.5
Black or African American alone.....	1,015	1.3
American Indian and Alaska Native alone.....	964	1.2
Asian alone.....	4,086	5.1
Native Hawaiian and Other Pacific Islander alone..	201	0.2
Some other race alone.....	177	0.2
Two or more races alone.....	2,870	3.5



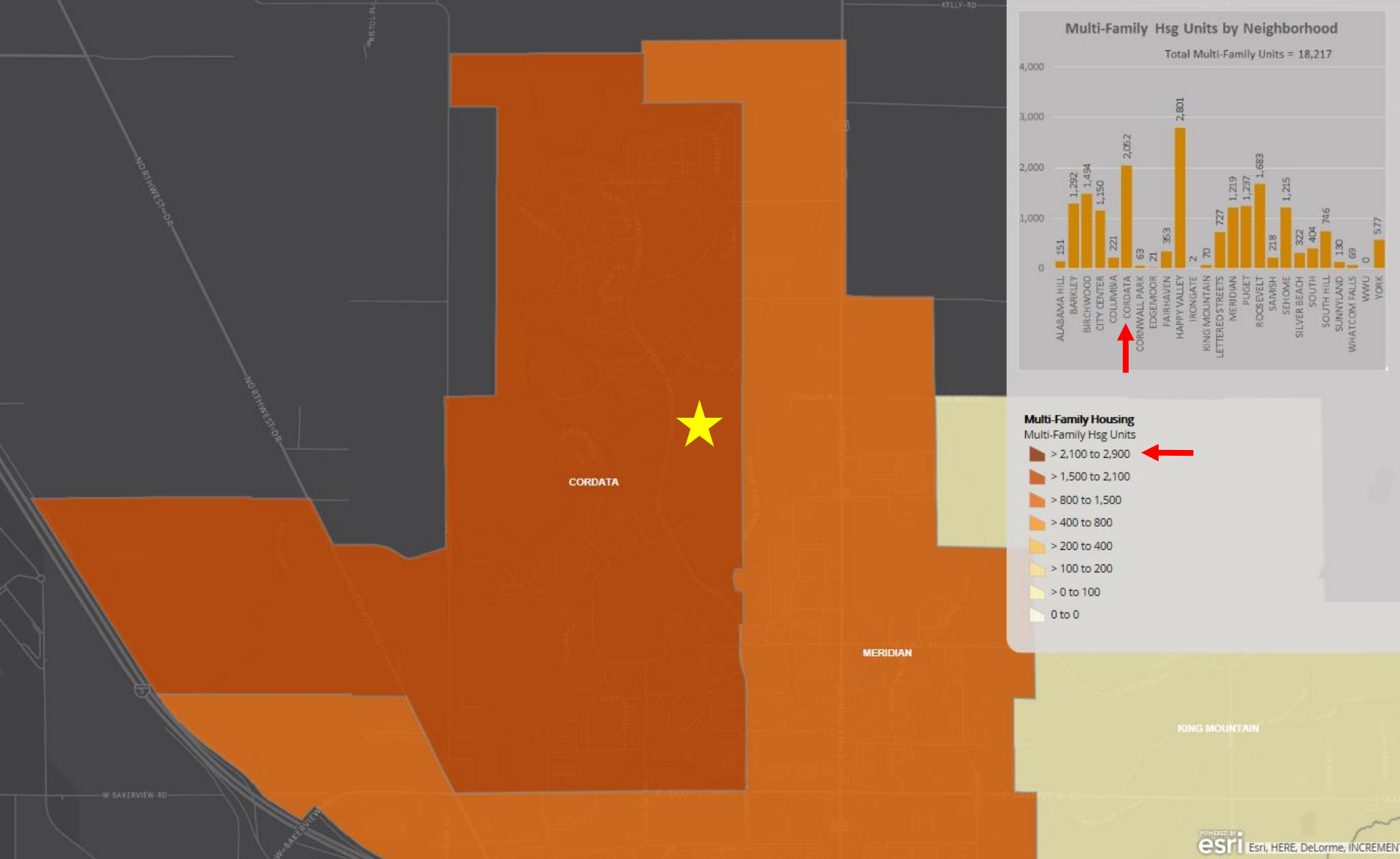
COB LOW & MOD INCOME BLOCK GROUPS (2006-2010 American Community Survey)



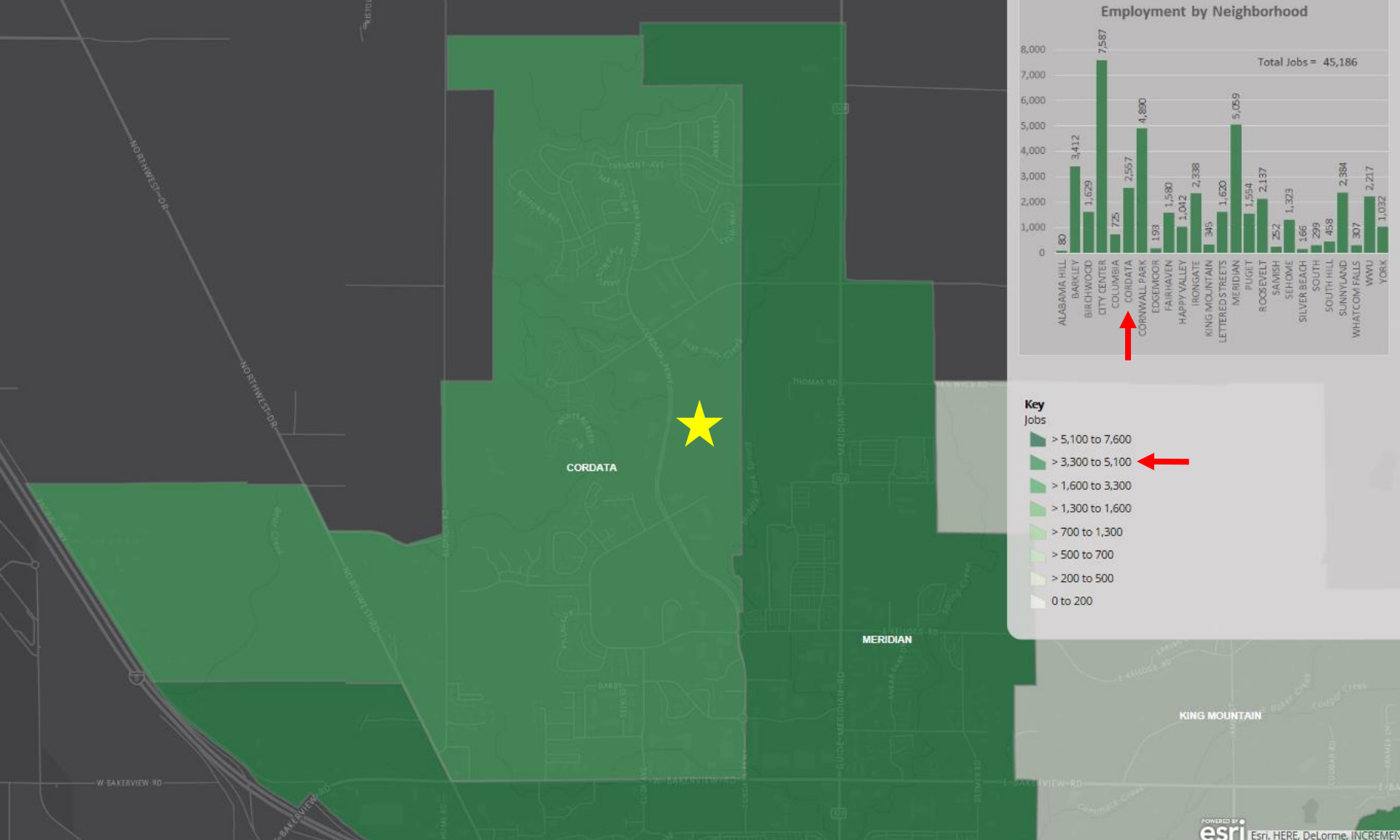
TOTAL RESIDENTIAL POPULATION



TOTAL HOUSING UNITS



MULTI-FAMILY HOUSING



TOTAL RESIDENTIAL POPULATION