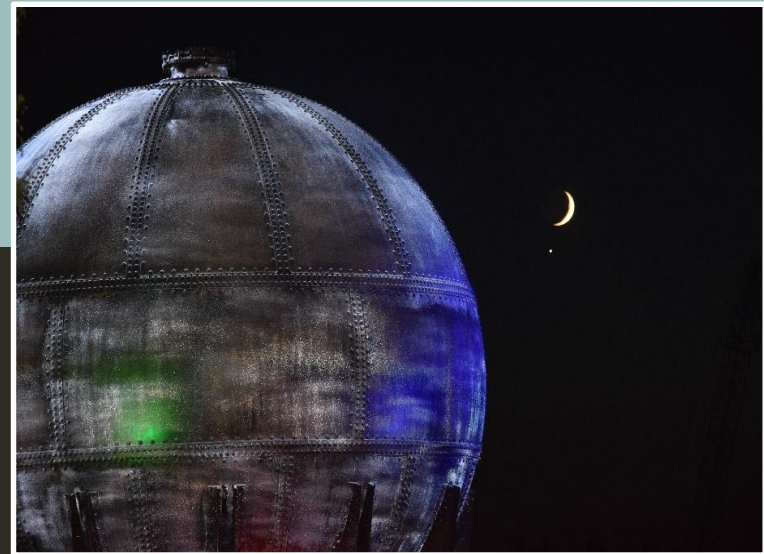


# THE 2020 BELLINGHAM PARKS, RECREATION, AND OPEN SPACE PLAN

## Chapter 5: Recommendations



Acid Ball at Waypoint Park. Photo by Jerry Legault.

# POLICY RECOMMENDATIONS NEIGHBORHOOD PARKS (NP)

- Neighborhood parks should be located within a safe half-mile walking distance of residential development.
- Acquire and develop new neighborhood parks in the City limits and as areas annex to be located in the general vicinity shown on the map.
- Improve or add restrooms at neighborhood parks where feasible and provide a guide to restrooms that are available during winter months.



Birchwood Park. Photo by Sabine Fuller.

PROJECT RECOMMENDATIONS NEIGHBORHOOD PARKS (NP)

|  | Funded<br>2019/2020 | High<br>2021/<br>2022 | Medium<br>2023/<br>2024 | Low<br>2025/<br>2026 |
|--|---------------------|-----------------------|-------------------------|----------------------|
| Acquire and develop neighborhood park in the Bakerview corridor. |                     |                       |                         |                      |
| Develop Maplewood/McLeod Park.                                   |                     |                       |                         |                      |
| Develop Julianna Park.   |                     |                       |                         |                      |
| Renovate and upgrade Shuksan Meadows Park.                       |                     |                       |                         |                      |
| Plan and develop North Samish Hill Park.                         |                     |                       |                         | ADD                  |
| Add additional park amenities at Sunset Pond Park.               |                     |                       | ADD                     |                      |
| Acquire a Neighborhood Park in Happy Valley.                     |                     |                       | ADD                     |                      |

## POLICY RECOMMENDATIONS COMMUNITY PARKS (CP)

- Community parks should be distributed throughout the City with approximately one park for every four-square miles, and served by designated pedestrian routes, sidewalks or trails.
- Create capital maintenance plans for each Community Park.
- Develop waterfront parks according to the Waterfront District Subarea Plan.



Lake Padden Park. Photo by Sean Stockburger.

# Project Recommendations Community Parks (CP)

|  | Funded<br>2019/2020 | High<br>2021/2022 |
|--|---------------------|-------------------|
| Develop Cordata Park Phase 2.  |                     |                   |
| Develop Cornwall Beach Park.   |                     |                   |
| Construct new restrooms at Boulevard Park.                                     |                     |                   |
| Pursue partnership with YMCA and Arne Hanna Aquatic Center.                    |                     | ADD               |
| Complete a master plan for Fairhaven Park's Chuckanut Community Forest.        |                     |                   |
| Complete Boulevard Park clean up of South State Street Manufactured Gas Plant. |                     |                   |
| Replace roof at Bloedel-Donovan multi-purpose building.                        |                     | ADD               |

# Project Recommendations Community Parks (CP)

|   | Medium<br>2023/2024 | Low<br>2025/2026 |
|---|---------------------|------------------|
| Master Plan and develop Van Wyck Park.  |                     |                  |
| Develop Cornwall Beach Park.  |                     |                  |
| Squalicum Creek Park - complete remaining master planned improvements.  |                     | ADD              |
| Replace natural field surfaces with synthetic surfaces to maximize use at Geri Fields, Squalicum Creek Park and other sites.  |                     | ADD              |
| Civic Complex: <ul style="list-style-type: none"><li>• Replace dugouts at Geri Fields.</li><li>• Replace scoreboard at Civic Stadium</li><li>• Lighting assessment.</li></ul> | ADD                 |                  |
| Improve drainage at multi-use fields, including Lake Padden and Cornwall Parks  | ADD                 |                  |

## POLICY RECOMMENDATIONS SPECIAL USE (SU)

- Acquire and develop new hand-carry boat launch or landing facilities in conjunction with park development in the Waterfront District and at other locations.
- Identify appropriate location for a north end skate park.
- Acquire or develop new or improved town square or plaza space downtown and in urban villages such as Old Town, Samish and at Fountain Plaza.



Woodstock Farm in Summer. Photo by Tore Ofteness.

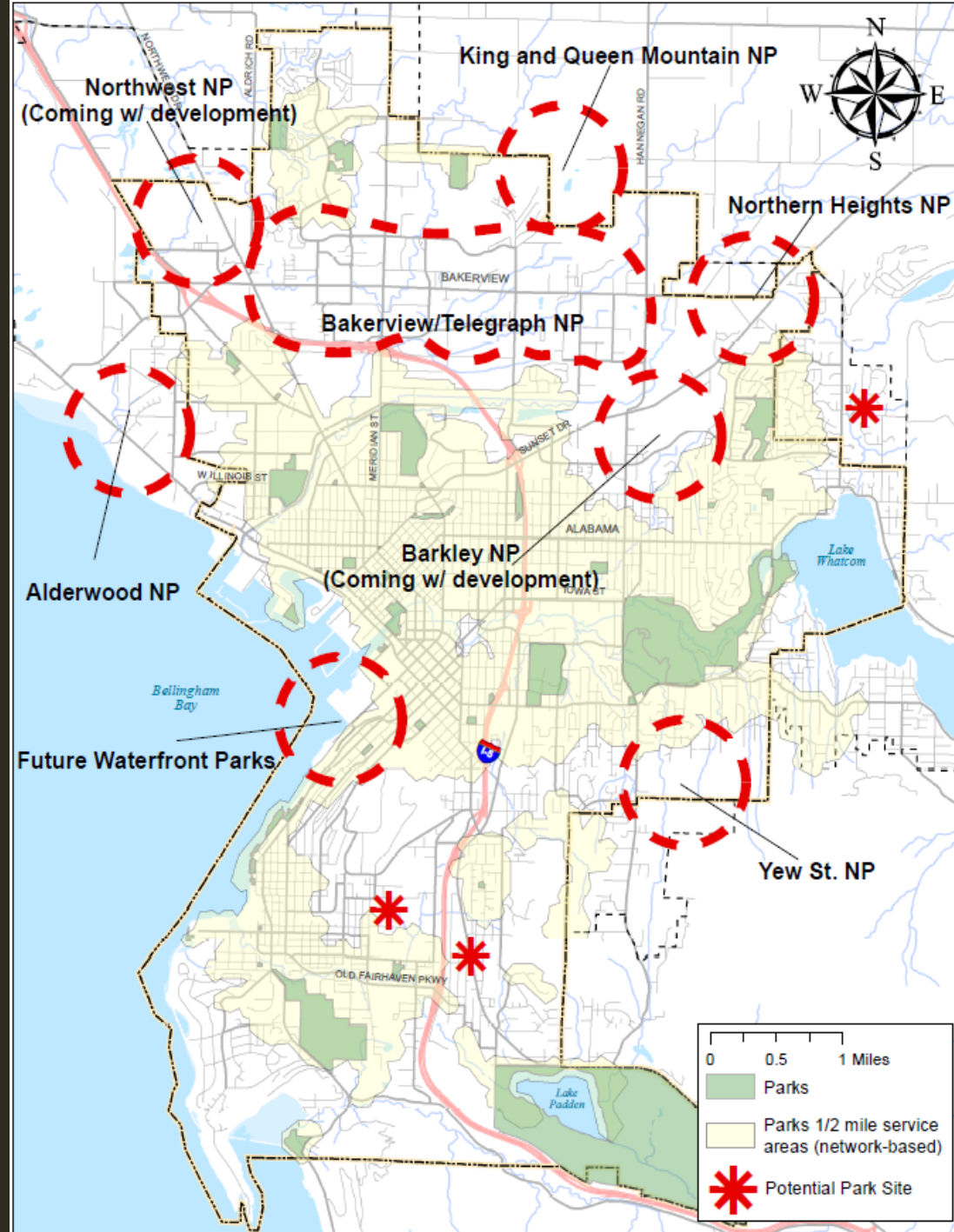


# Project Recommendations Special Use (SU)

|   | Funded<br>2019/2020 | High<br>2021/2022 |
|---|---------------------|-------------------|
| Add parking, ADA access and trail connectivity to Woodstock Farm and develop a strategic management and maintenance plan.         |                     | ADD               |
| Provide identified improvements to community gardens and form a committee to propose a strategic management and maintenance plan. |                     | ADD               |
| Implement master plan at Big Rock Garden, including replacing fence.  |                     | ADD               |
| Acquire and renovate the pier for public access at Little Squalicum Park.   |                     | ADD               |

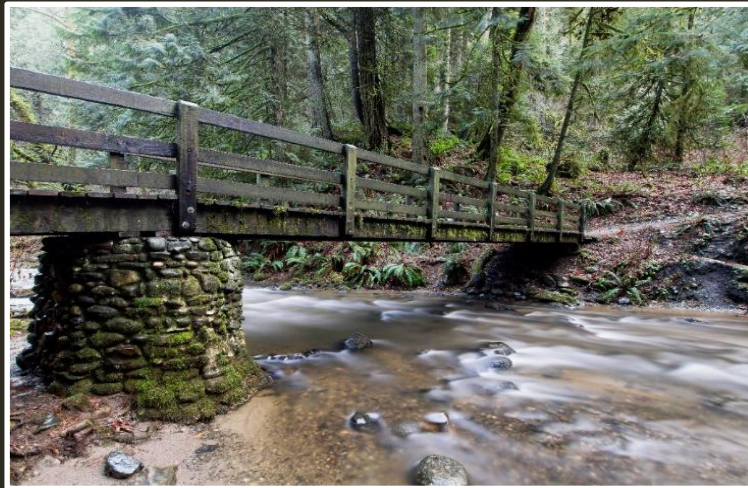


# RECOMMENDED FACILITIES PLAN PARKS AND SPECIAL USE SITES



# POLICY RECOMMENDATIONS OPEN SPACE (OS)

- Acquire additional greenway corridors as identified on the map.
- Acquire additional open space anchors in the general vicinity of the areas identified on the map.
- Acquire additional salt waterfront land and tidelands to expand the network of open space and public access along Bellingham Bay.
- Evaluate Samish Crest open space for surplus or land swap opportunities.

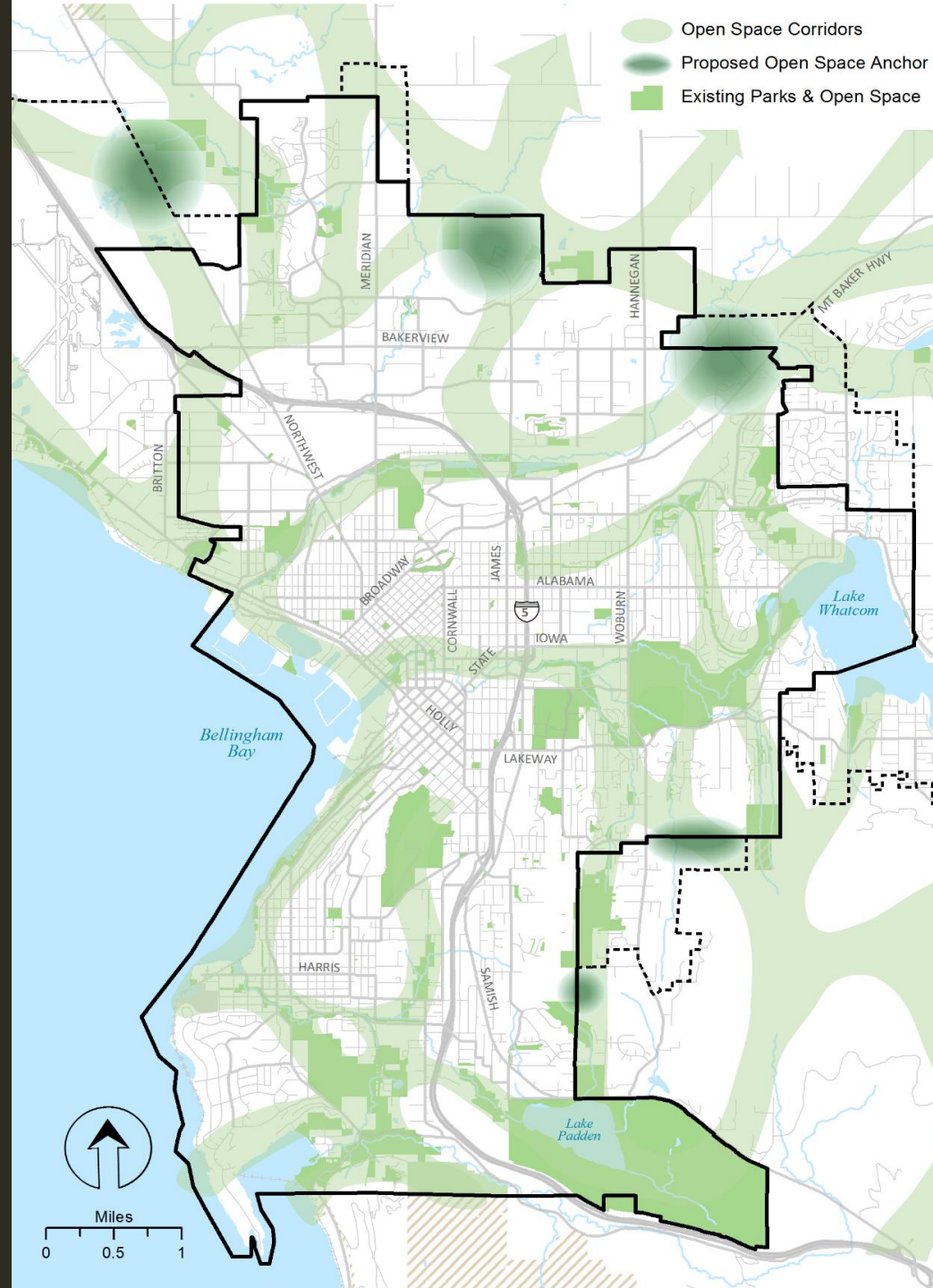


Padden Creek passing through Arroyo Nature Area. Photo by Sean Stockburger.

# Project Recommendations Open Space (OS)

|   | Funded<br>2019/2020 | High<br>2021/2022 | Medium<br>2023/2024 | Low<br>2025/ 2026 |
|---|---------------------|-------------------|---------------------|-------------------|
| Improve parking and wayfinding at Riley Open Space.                                 |                     | ADD               |                     |                   |
| Develop access to King and Queen Mountain Greenway.                                 |                     |                   | ADD                 |                   |
| Prioritize and implement recommendations of Urban Forestry Plan on Parks open space |                     | ADD               |                     |                   |

# RECOMMENDED FACILITIES PLAN • OPEN SPACE



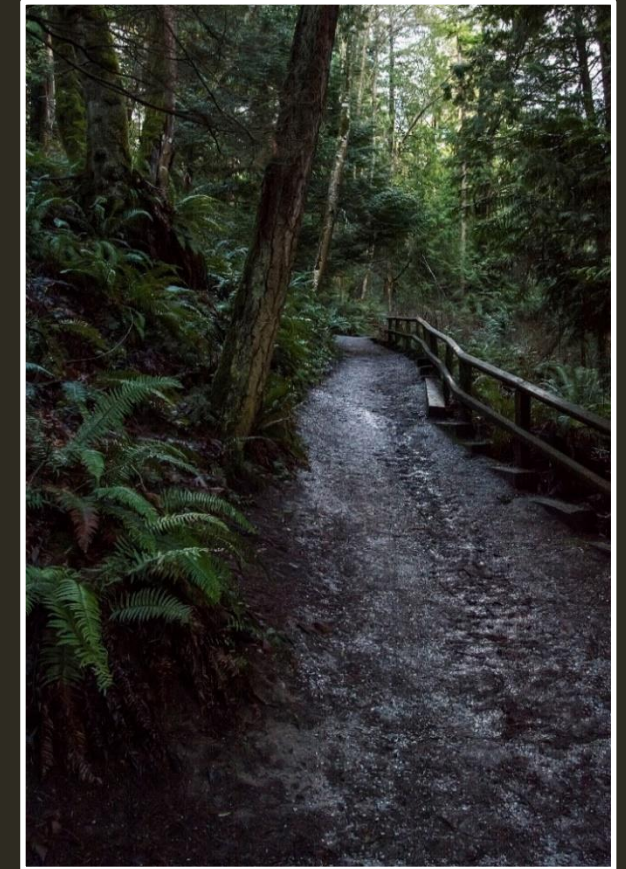
# POLICY RECOMMENDATIONS TRAILS (TR)

- Acquire and/or develop new trail connections as shown on the in order to provide an off-street trail within a half mile of every resident in Bellingham.
- Coordinate with Public Works to identify opportunities for better trail, sidewalk and bike route connectivity.
- Institute a maintenance replacement program to monitor, maintain, improve and/or replace trail features, including bridges, boardwalks and stairs.
- Connect Cordata Park, Whatcom Community College and Van Wyck Park.
- Acquire and/or develop trailheads (parking, signage, restrooms, picnic areas, etc.) at Galbraith Mountain area, Woodstock Farm, Fairhaven Park Forest and North Chuckanut Trailhead.
- Acquire and develop a trail corridor to extend the Northridge Park Trail west.
- Pursue easements to connect Bay to Baker Trail to King and Queen Mountain Greenway.
- Pursue connections from Little Squalicum Park northwest to Alderwood/Airport area.
- Develop trails to fulfill the Waterfront District Subarea Plan.



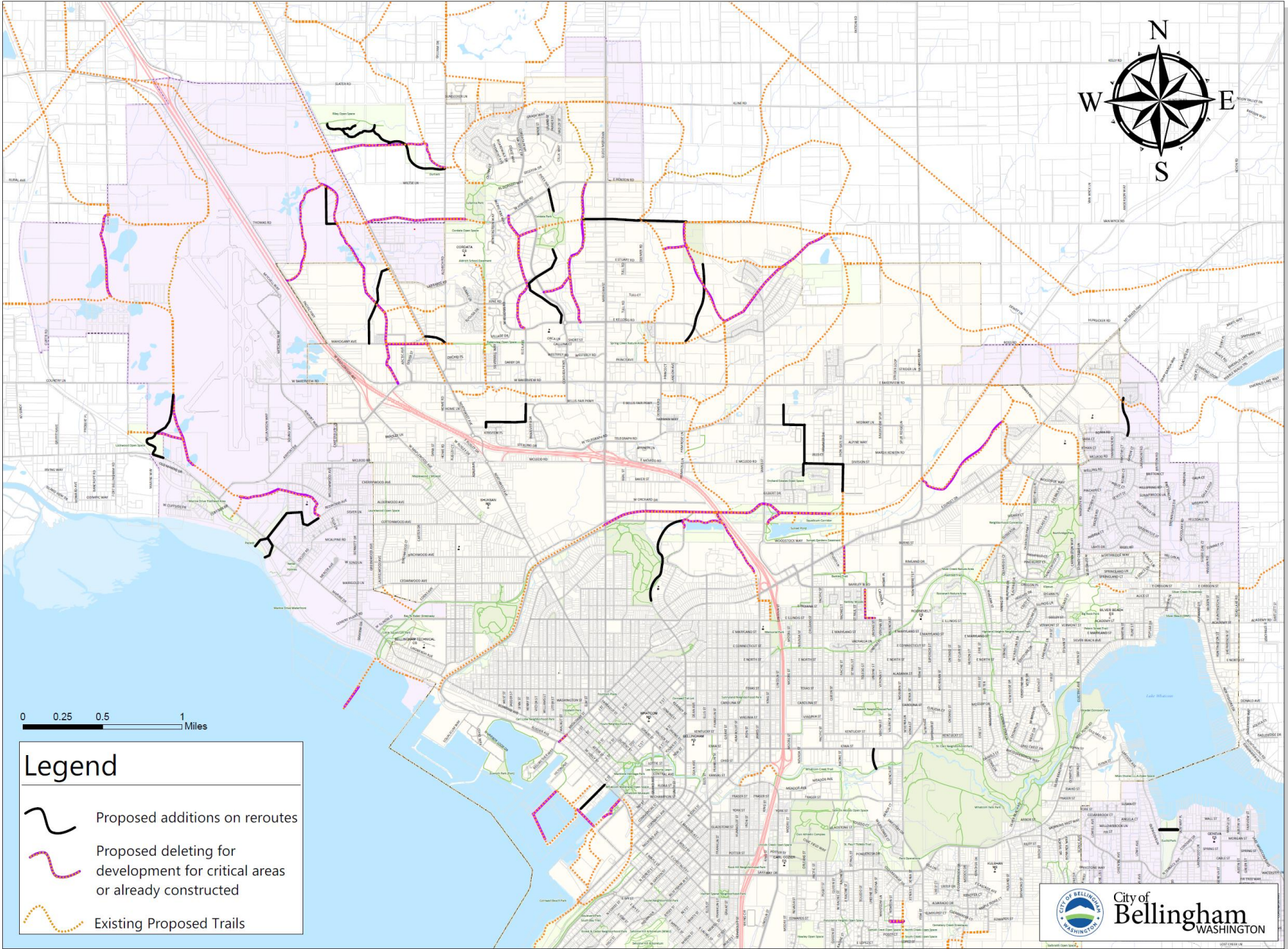
# Project Recommendations Trails (TR)

|   | Funded<br>2019/2020 | High<br>2021/2022 | Medium<br>2023/2024 | Low<br>2025/2026 |
|---|---------------------|-------------------|---------------------|------------------|
| Samish Crest — complete connection to Lake Padden.              |                     |                   |                     |                  |
| Connect Riley Open Space and the Cordata Trail.                 |                     |                   | ADD                 |                  |
| Acquire trail corridor along Squalicum Creek.                   |                     |                   |                     |                  |
| Complete Locust Beach trailhead and trail improvements.         |                     |                   |                     | ADD              |
| Extend trail along Whatcom Waterway as development occurs.      |                     |                   |                     |                  |
| Evaluate and replace bridges — Wildflower, Civic, Silver Creek. |                     | ADD               | ADD                 |                  |



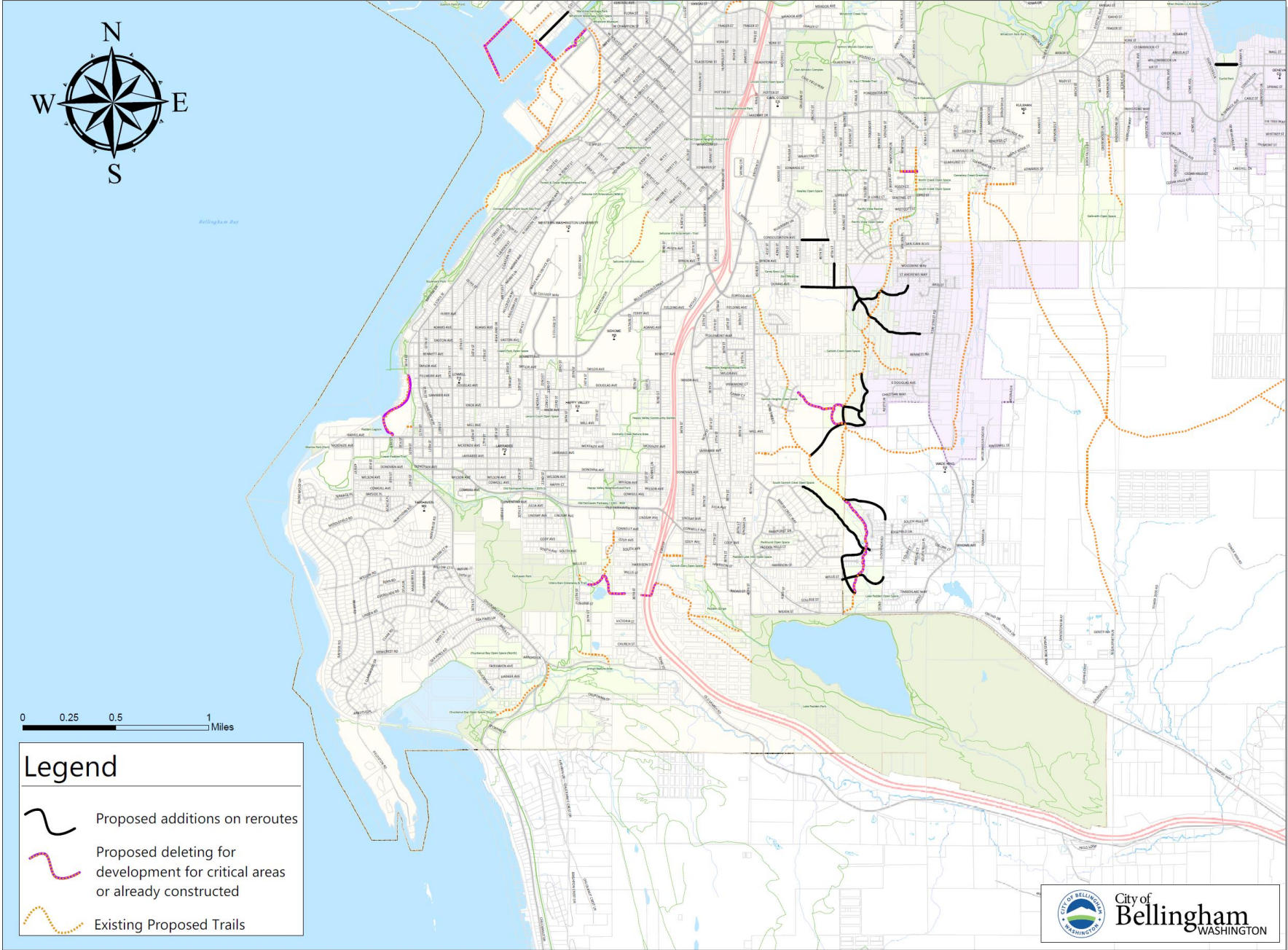
Trail in Whatcom Falls Park. Photo by Roberta Hochreiter.

# North Bellingham Proposed Trail Changes





South Bellingham Proposed Trail Changes



# NEXT STEPS

- Public Meeting – Thursday, September 19<sup>th</sup>, 6:30 – 8:30 p.m., Bloedel-Donovan
- Complete and validate land inventory and implementation chapters
- Full Draft published next month
- MNAC presentation October
- Planning Commission November
- City Council January/February
- Final resolution approving plan due to State RCO office on March 1, 2020