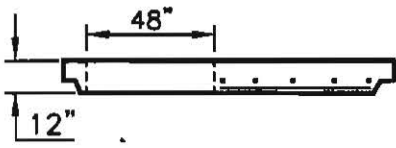
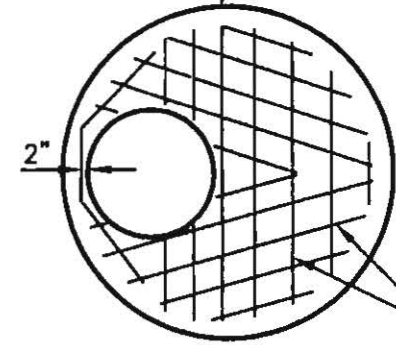
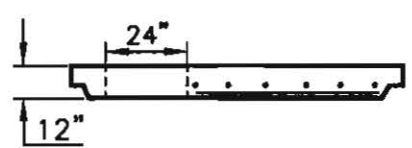
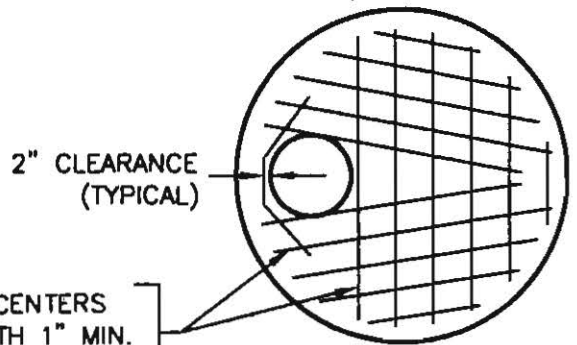


96" SLAB/48" OPENING



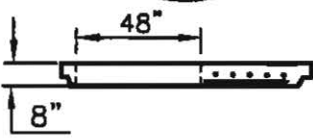
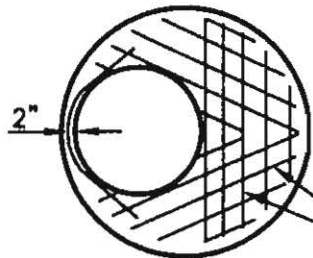
96" SLAB/24" OPENING



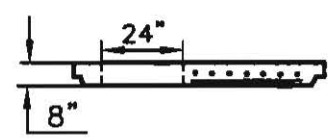
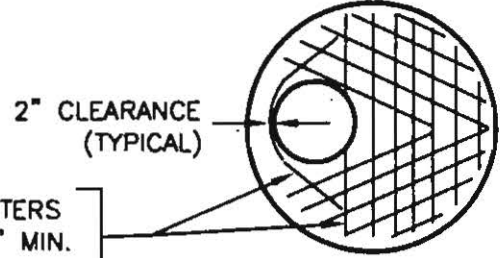
#6 BARS AT 7" CENTERS
BOTTOM FACE WITH 1" MIN.
COVER

2" CLEARANCE
(TYPICAL)

72" SLAB/48" OPENING



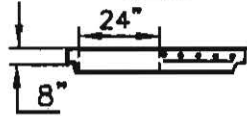
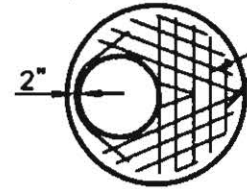
72" SLAB/24" OPENING



#5 BARS AT 6" CENTERS
BOTTOM FACE WITH 1" MIN.
COVER

2" CLEARANCE
(TYPICAL)

54" SLAB/24" OPENING

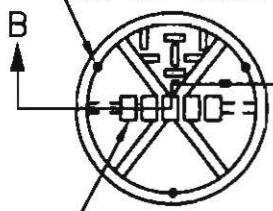


#4 BARS AT 6" CENTERS BOTTOM
FACE WITH 1" MIN. COVER

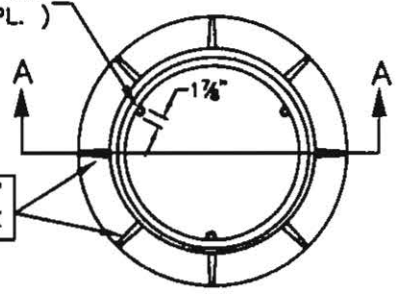
24"Ø D.I. OR C.I. MANHOLE FRAME
WITH D.I. LOCKING COVER

DRILL & TAP 5/8"-11 N.C.
120 DEGREES (TYP. 3 PL.)

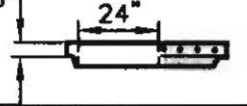
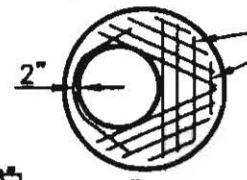
5/8"-11 N.C.x1 1/4" SS SOC.
HD. CAP SCREW (3 REQ'D)



8 WEBS 1/2" THICK



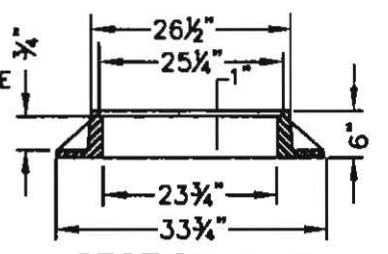
48" SLAB/24" OPENING



3" RAISED LETTERS AS REQUIRED
"SEWER" FOR SANITARY SEWER.
"STORM/DRAIN" FOR STORM DRAINAGE



SECTION B-B



SECTION A-A

APPROVED

Henry J. ...
City Engineer

9-8-11

Date

CITY OF BELLINGHAM
STANDARD MANHOLE
RING AND COVER

DRAWING
SS-704