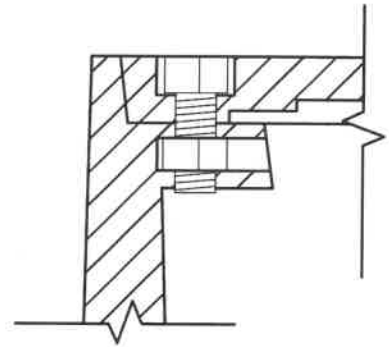
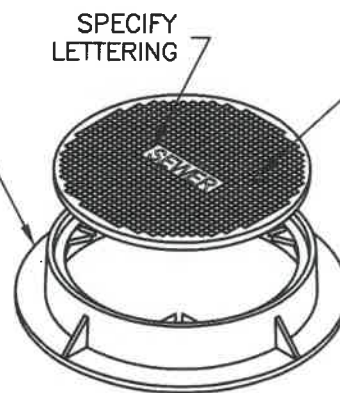


FRAME PLAN VIEW



FLOATING NUT DETAIL

RING AND COVER SHALL BE BOLT-DOWN/WATERTIGHT TYPE 2 PER CURRENT WSDOT STANDARD PLAN BUT USE (3) $\frac{5}{8}$ " FLOATING NUTS AT 120° ON 22 $\frac{1}{8}$ " BOLT CIRCLE IN PLACE OF FIXED BOLT DOWN THREADS, SEE DETAIL THIS SHEET (RING AND COVER SHALL BE OLYMPIC FOUNDRY A-2009-R40G OR EQUAL)



ISOMETRIC VIEW

NOTES:

1. FRAME SHALL NOT BE THREADED AND INSTEAD PROVIDE A FLOATING AND REMOVABLE SQUARE NUT SECURED TO THE BOTTOM OF THE RING/FRAME THAT CAN BE REPLACED IF THE THREADS ARE STRIPPED IN THE FUTURE. NUT SHALL BE SQUARE AND IN A CHANNEL TO PREVENT ROTATION DURING TIGHTENING OF THE BOLT.
2. SEWER FRAMES AND COVERS SHALL BE BOLT-DOWN / WATER TIGHT PER THE CURRENT WSDOT STANDARD PLAN FOR CIRCULAR FRAME (RING) AND COVER WITH REVISIONS AS INDICATED ON THIS STANDARD PLAN.

APPROVED

City Engineer

22 May 2023

Date

CITY OF BELLINGHAM
STANDARD MANHOLE
RING AND COVER

DRAWING
SS-704