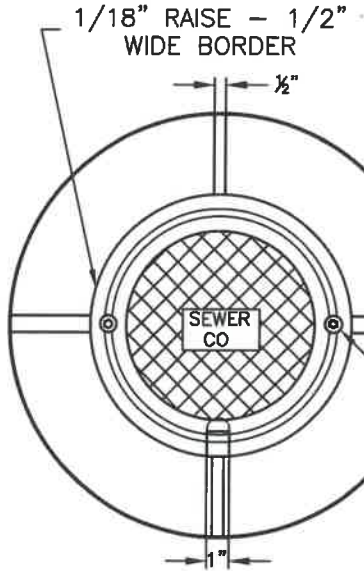


2"x4" STAKE BURIED TO WITHIN 6" ABOVE TOP OF PIPE, EXTEND A MINIMUM OF 3' ABOVE GRADE. PAINT GREEN ABOVE GROUND. MARK 2"x4" STAKE WITH "SEWER" AND DEPTH TO PIPE INVERT FROM FINISHED GROUND LEVEL.

PVC FEMALE PIPE THREADED HUB ADAPTER AND PLUG  
PAVEMENT OR FINISH GRADE



2'-0"W x 2'-0"L x 1'-0"T  
CONCRETE BLOCK.

COMPACTED BACK FILL

SEWER PIPE

WYE

WATERTIGHT  
THREADED  
PLUG

DRILL & TAP  
(SPLITTING THE SEAM)  
SET MADE BOLT-DOWN  
WITH 5/8" S.S. ALLEN  
HEAD BOLTS - 2  
PLACES

CLEAN-OUT LID MUST BE AT  
LEAST 2" ABOVE PVC PLUG

COVER PIPE

2" MIN

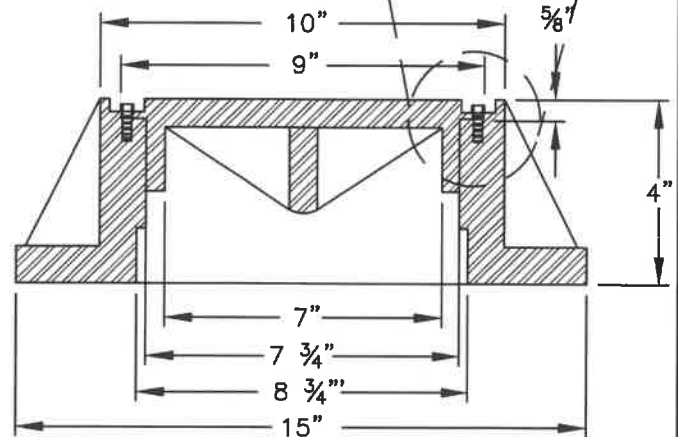
1'-0"

4 3/4"

FIBER JOINT PACKING

OVERLAP 3-5"

45° BEND



## NOTES:

1. FOR 8" AND LARGER SEWER MAINS THE VERTICAL PORTION OF THE MAIN IS TO BE REDUCED TO 6" BETWEEN THE WYE AND CAST IRON RING AND COVER.
2. IF CLEANOUT IS LOCATED IN ASPHALT, THE CONCRETE BLOCK IS TO BE LEFT APPROXIMATELY 1-1/2" LOW TO ALLOW FOR AN ASPHALT TOPPING OF LIKE MIXTURE AS THE SURROUNDING AREA. IN ALL CASES THE CONCRETE BLOCK WILL BE 12" THICK.

NOT TO SCALE

APPROVED

  
City Engineer

22 May 2023  
Date

CITY OF BELLINGHAM  
SEWER MAIN AND SIDE SEWER  
CLEANOUT

DRAWING  
SS-735