



## Squalicum Creek Park Phase 3 Development

### Description

Squalicum Creek Park Phase 3 includes a new lighted ball field as well as lighting the existing field and providing a multi-use sports field in the outfields of the adjoining ball fields. Also included is a new playground, a fenced dog off-leash area, restrooms, picnic shelter, basketball court, loop trail, additional parking, a stair connection to the Bay to Baker Trail, landscaping, park benches and picnic tables.

### Status & Project Schedule

The park playground, dog off-leash area, restrooms, picnic shelter and basketball court are complete and open for your enjoyment!

### Zipline Status:

- The current zipline is out of commission. The zipline was installed as part of phase three construction in 2015. Later, Parks and Recreation took the zipline out of commission on five occasions owing to abnormal wear on parts. The final repair made the zipline non-compliant with adopted playground safety standards. The City negotiated a refund and purchased a zipline from another manufacturer. The order was placed in March 2017. An incomplete delivery of zipline parts occurred in July 2017.
- The installation of the new zipline is pending full delivery of the rest of the zipline parts, and obtaining price quotes for the installation of the zipline by a contractor. Anticipated installation is August/September 2017.

### Park Stormwater Improvements Status and Project Schedule:

- Park Ops Maintenance Yard Stormwater design currently in 100% design phase. Construction is anticipated September 2017.
- Infiltration Basins-Four stormwater basins are currently infiltrating slower than designed. Geotechnical explorations and soil samplings continue. Potential infiltration construction 2018.

### Phase 3 Budget & Funding Source

- Budget: \$5 million
- Funding Source: Greenway 3 Levy and Park Impact Fees

### Contractor & Consultants

City's Project Manager:

- Jonathan Schilk, RLA

Contractor:

- Strider Construction Company, Inc., Bellingham

Design Consultants:

- Robert W. Droll, PS, Landscape Architect
- Reichardt and Ebe Engineering, Inc., Civil Engineering
- GeoEngineers, Inc., Geotechnical Engineering

## Reference

- Phase 3 Master Plan (PDF)
- Squalicum Park Phase 3 Fact Sheet (PDF)
- Squalicum Creek Park Aerial (PDF)

## Affected Neighborhoods

- Birchwood
- Columbia

## Participating Departments

- Parks and Recreation

## contacts

[Parks and Recreation Department](#)



# Squalicum Creek Park Phase Three

## **Project Scope**

Proposed park improvements include:

- Demolish concrete slabs & building
- Extend utilities
- Site grading
- Light existing ball field & construct second lighted field
- Improved walkways
- Loop trail and connection to Bay to Baker Trail
- Basketball court
- Fenced dog off leash area
- Restroom building near off leash area & basketball court
- Large rentable picnic shelter with tables
- Playground
- Park benches and picnic tables
- Landscaping
- Convert storage building to park maintenance facility
- Lighted parking
- Lighted crosswalk at Squalicum Way and West Street

## **Project History:**

Squalicum Creek Park was purchased in 2002 with Beyond Greenways Levy funding and State grant funds for the purpose of building a community park & an athletic field complex.

Park Master Plan adopted by City Council in 2005

Phase One completed 2008 - included ballfield, restroom, parking, and trail

Phase Two completed 2010 - salmon enhancement and trail

Phase Three completed 2015-included playground, skate dot, ballfield, restroom, parking, pedestrian walkways and trail loop, basketball court, picnic shelters, fenced dog off leash area, landscape planting, multi-purpose playing field, lawn and irrigation, utility extensions, extension of existing paved parking, and overflow gravel parking area.

### **Park Type:**

Community

### **Neighborhood Plan Sub Area /Zone:**

24/Public

### **Neighborhood**

Birchwood

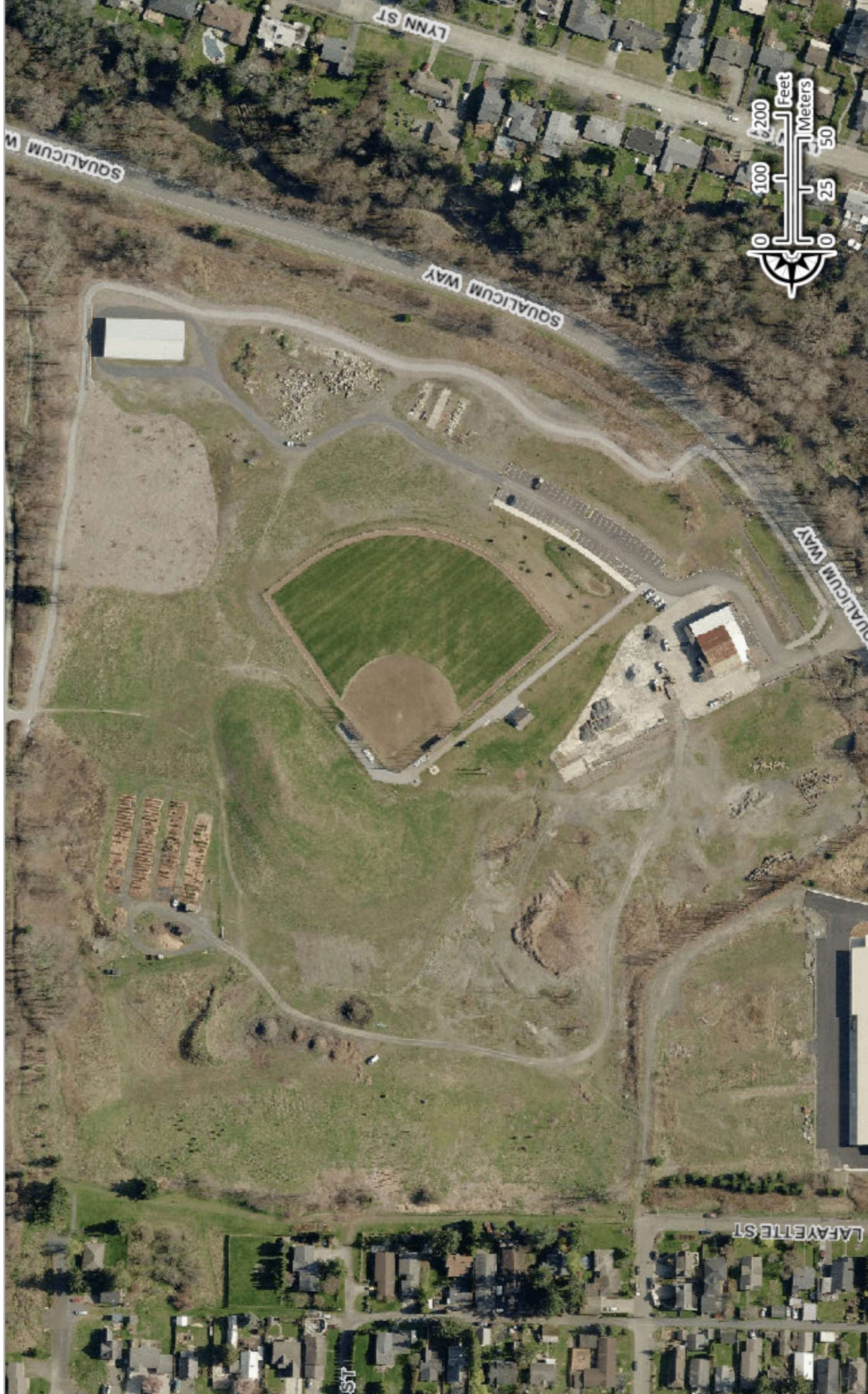
### **City Project Manager:**

Jonathan Schilk, ASLA

### **Area:** 35 Acres

### **Consultant:**

Robert Droll, Landscape Architect, Lacey WA



LYNN ST

SQUALICUM W

SQUALICUM WAY

SQUALICUM WAY

LAFAYETTE ST

ST

