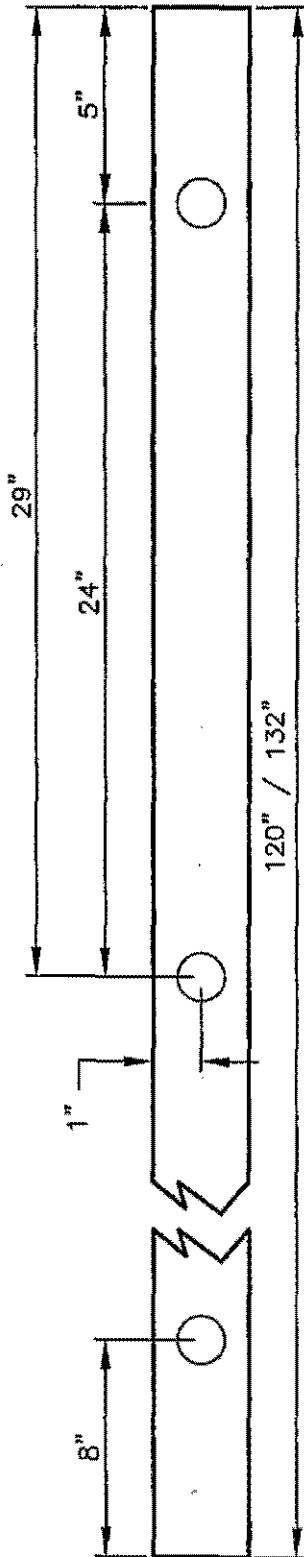
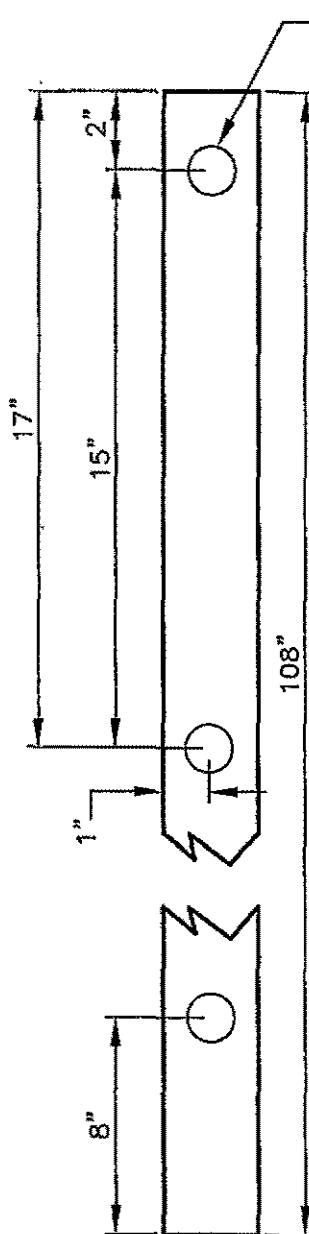


NOTES:

1. BASE PIECES ARE $2\frac{1}{4}$ " OUTSIDE DIMENSION-12 GAUGE STEEL ASTM DES A-570 GRADE 33, AND WILL BE A SLIP FIT OVER POST PIECES. HOLES ARE $\frac{7}{8}$ " DIAMETER ON 1" CENTERS, ALL FOUR SIDES. GALVANIZED COATING, ASTM SPEC. A-525, DES G-90.
2. POSTS ARE 2" OUTSIDE DIMENSION, 14 GAUGE STEEL ASTM DES A-570 GRADE 33. PAINTED EPOXY OR OTHER DURABLE COATING, COLOR IS PERMA-GREEN PER FEDERAL STANDARD 595-A, COLOR NUMBER 14109 (DARK LIMIT V-) OR EQUIVALENT. PERMANENT UV RESISTANT DARK GREEN COATING. HOT DIP GALVANIZED COATING ASTM SPECIFICATION A-525, DES G-90.



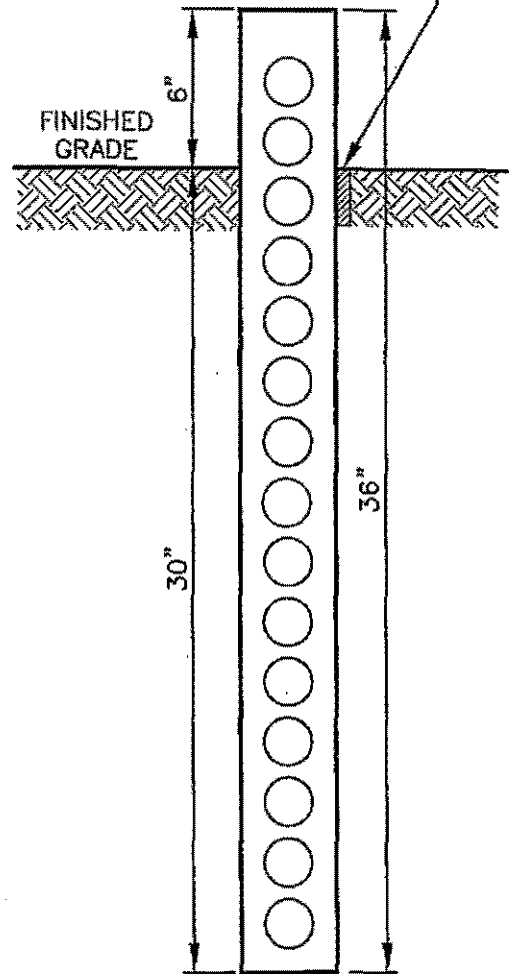
10 AND/OR 11 FT.
SIGN POST



9 FT. SIGN POST

ALL HOLES ARE $\frac{7}{8}$ " DIAMETER
PUNCHED OR DRILLED AS SHOWN.

IF INSTALLED IN CONCRETE
INSTALL EXPANSION JOINT
MATERIAL AROUND BASE



BASE PIECE

APPROVED
Phyllis A. Smith
City Engineer

11-9-05
Date

CITY OF BELLINGHAM
STREET SIGN POST DETAIL

DRAWING
TC-320