

NOTE FOR NIGHT CLOSURE:

1. FLASHING LIGHTS ON SIGNS.
2. STEADY BURNING LIGHTS FOR DELINEATION AND CHANNELIZATION.

SIGN SPACING

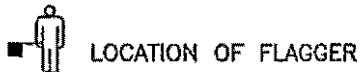
SPEED MPH	DISTANCE FROM TAPER TO 1ST SIGN	2ND SIGN	3RD SIGN
25MPH	200'	400'	400'
35MPH	300'	600'	600'

TAPER LENGTHS

SPEED MPH	LANE WIDTHS		
	10'	11'	12'
25	260'	275'	300'
35	350'	385'	420'

TRAFFIC CONE SPACING

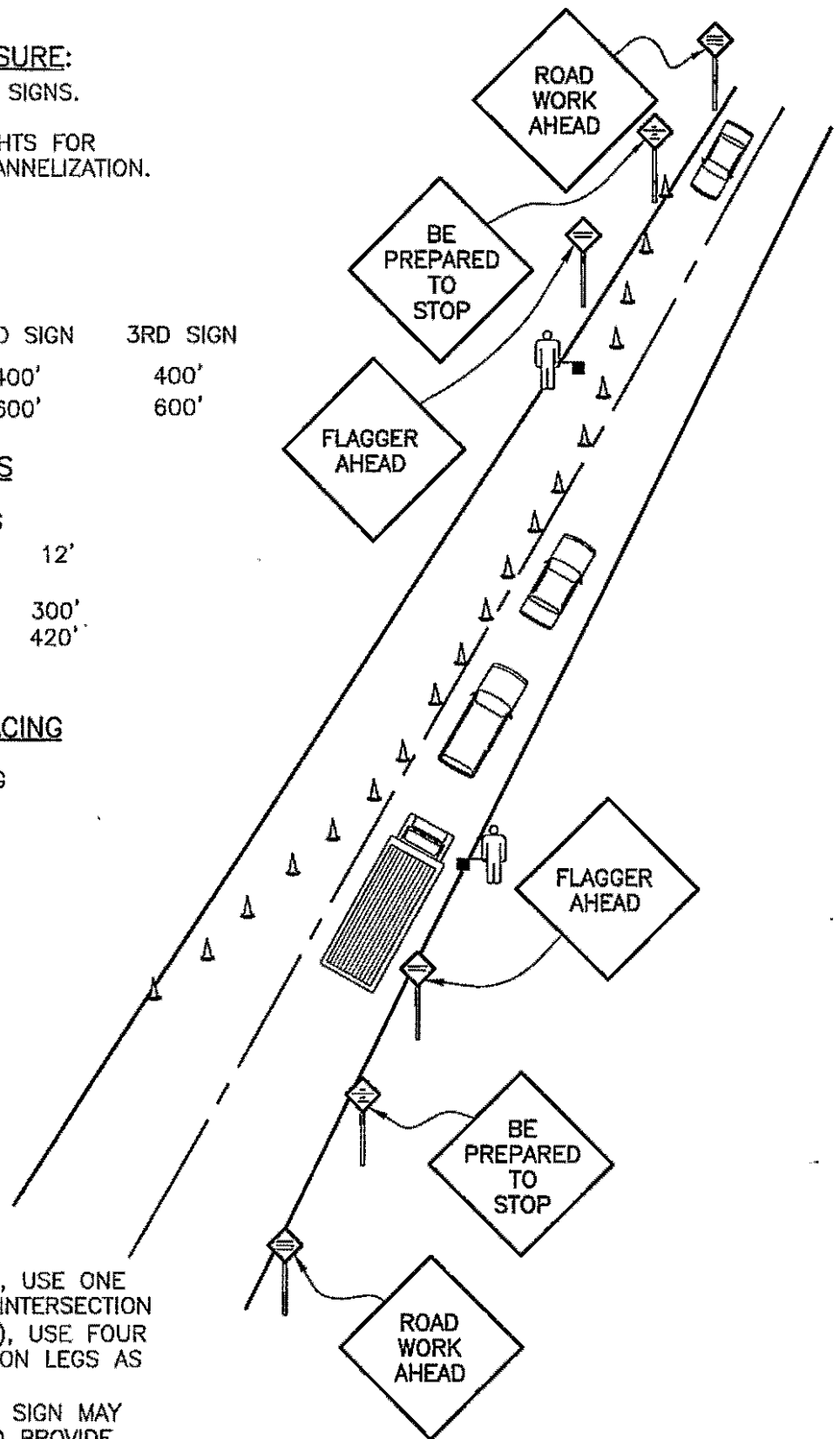
SPEED MPH	SPACING
25	25'
35	35'



NOTES:

LOW VOLUMES (2 LANES), USE ONE FLAGGER AT CENTER OF INTERSECTION
HIGH VOLUMES (4 LANES), USE FOUR FLAGGERS ON INTERSECTION LEGS AS SHOWN.

"ONE LANE ROAD AHEAD" SIGN MAY ALSO BE NECESSARY TO PROVIDE ADEQUATE ADVANCE WARNING.



NOT TO SCALE

APPROVED

Ray A. Routh
City Engineer

1/11/05
Date

CITY OF BELLINGHAM
FLAGGER CONTROL
FOR LANE CLOSURES

DRAWING
TC-330