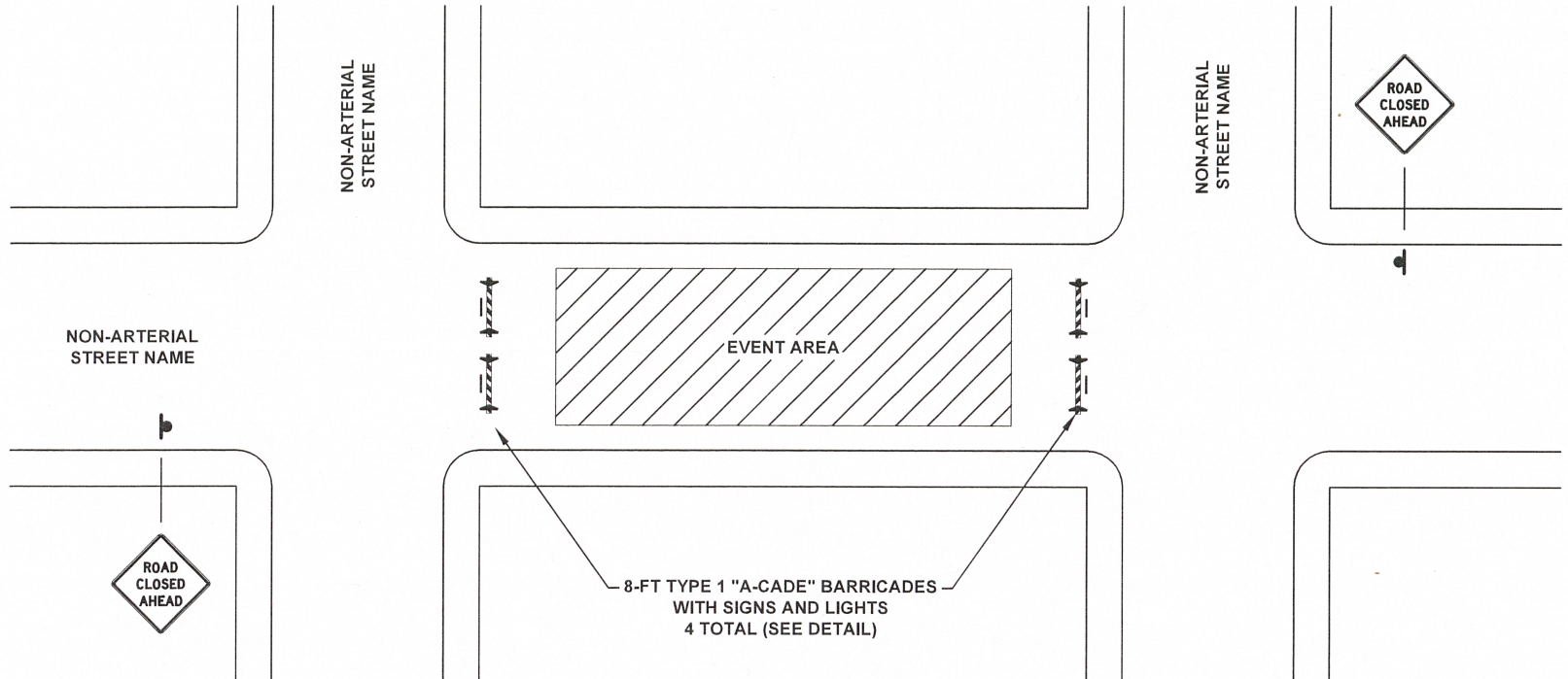


EXAMPLE TRAFFIC CONTROL PLAN FOR COMMUNITY EVENTS

THIS EXAMPLE IS FOR A TYPICAL BLOCK CONFIGURATION. IF YOUR STREET DOES NOT MEET THIS CONFIGURATION, OR IF THE EVENT IS ADJACENT TO AN ARTERIAL STREET, YOU ARE REQUIRED TO SUBMIT A TRAFFIC CONTROL PLAN WITH YOUR APPLICATION.



TRAFFIC CONTROL DEVICES NEEDED TO CLOSE ONE TYPICAL BLOCK:

- FOUR (4) 8-FT TYPE 1 "A-CADE" BARRICADES. SEE DETAIL.
- TWO (2) DOUBLE ARROW DETOUR SIGNS, 30" X 24" MIN. SIZE
- TWO (2) ROAD CLOSED SIGNS, 36" X 24" MIN. SIZE
- TWO (2) ROAD CLOSED AHEAD SIGNS, 30" X 30" MIN. SIZE



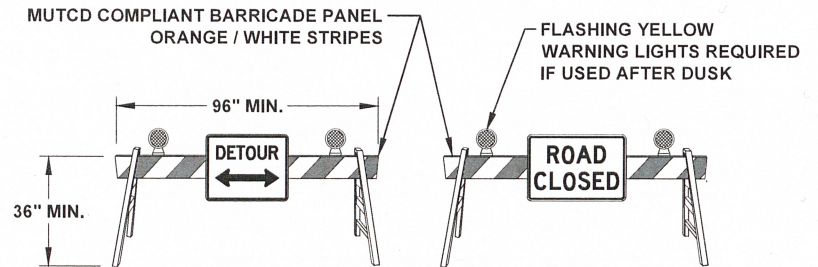
W20-3
30" X 30"
BLACK ON ORANGE



M4-9
30" X 24"
BLACK ON ORANGE



R11-2
36" X 24"
BLACK ON WHITE



TYPE 1 "A-CADE" BARRICADE

Each non-arterial road closure requires 2, 8-ft long "A-cade" style barricades, one DETOUR sign, and one ROAD CLOSED sign as shown above. Signs may be mounted to barricade panel.

APPROVED

City Transportation Engineer

Date 7/21/2025

CITY OF BELLINGHAM
STREET CLOSURE FOR
COMMUNITY EVENTS

DRAWING

TC-340