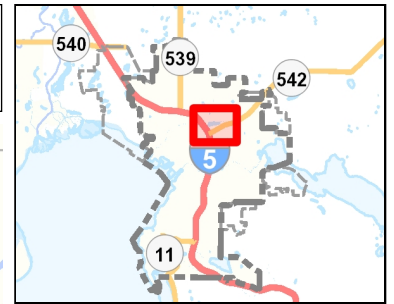
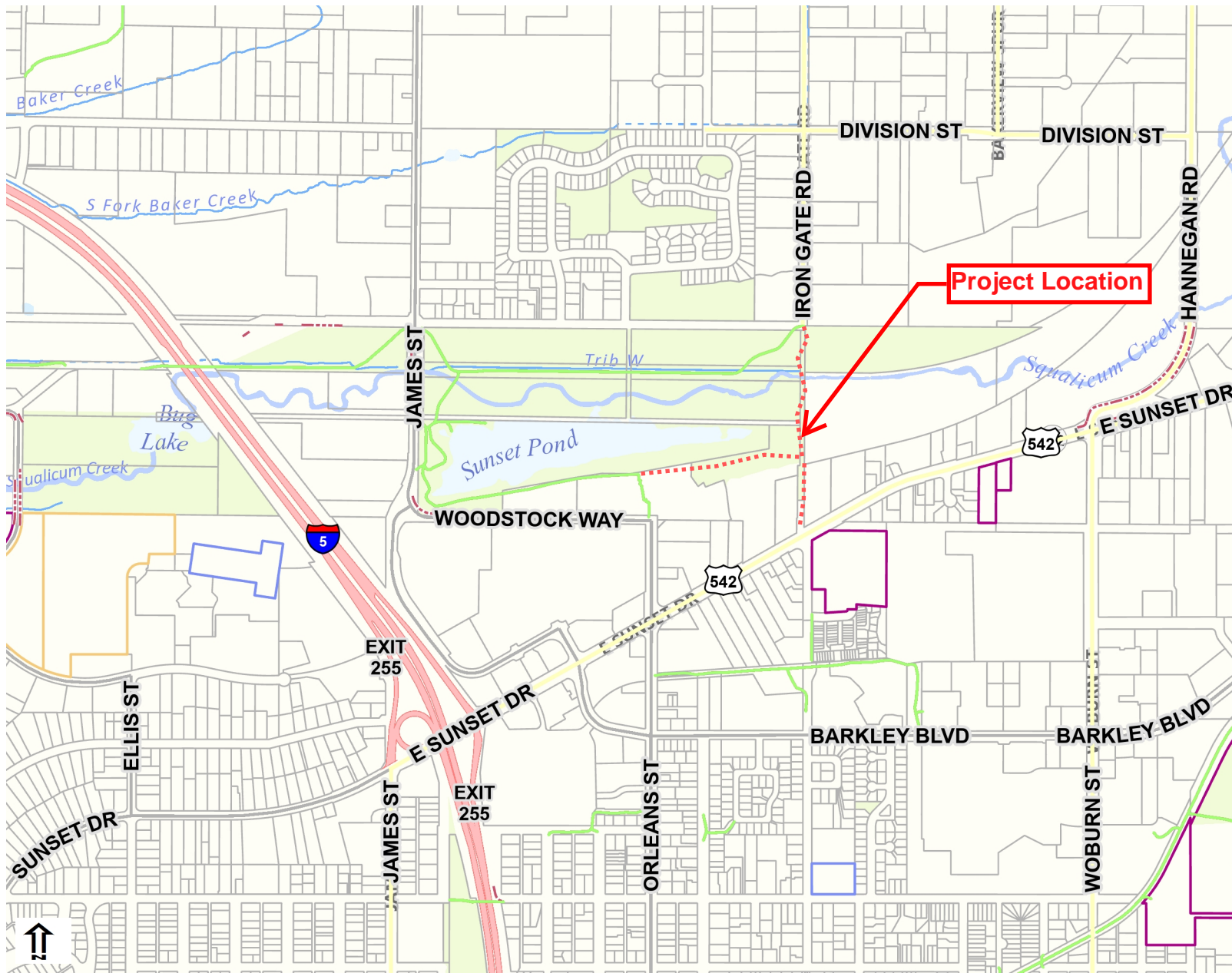


Vicinity Map



Legend

- Washington Roads Labels
- Bellingham Streets Neighborhood View
- County Roads Detail
- Trails
- Railroads
- Ferries
- Guardrails
- Airport
- Tax Parcels
 - Care Facility
 - Hospital
 - Schools
 - <all other values>
- Schools
 - Colleges/Universities
 - Elementary, Middle, High Schools
 - Private School or Preschool
- Fire Stations
- City Boundary
- Urban Growth Area
- Trails
- Railroads
- Ferries
- Interstate Polygons
 - Street
 - Interstate
- Airport
- Open Channel Streams
- Parks

Notes

Printed: 8/9/2022 12:14:15 PM

1,986 0 993 1,986 Feet

THIS MAP IS NOT TO BE USED FOR NAVIGATION

The City of Bellingham has compiled this information for its own use and is not responsible for any use of this information by others. The information found herein is provided simply as a courtesy to the public and is not intended for any third party use in any official, professional or other authoritative capacity. Persons using this information do so at their own risk and by such use agree to defend, indemnify and hold harmless the City of Bellingham as to any claims, damages, liability, losses or suits arising out of such use. Contact the Whatcom County Assessors office (360-778-5050) for the most up to date parcel information.