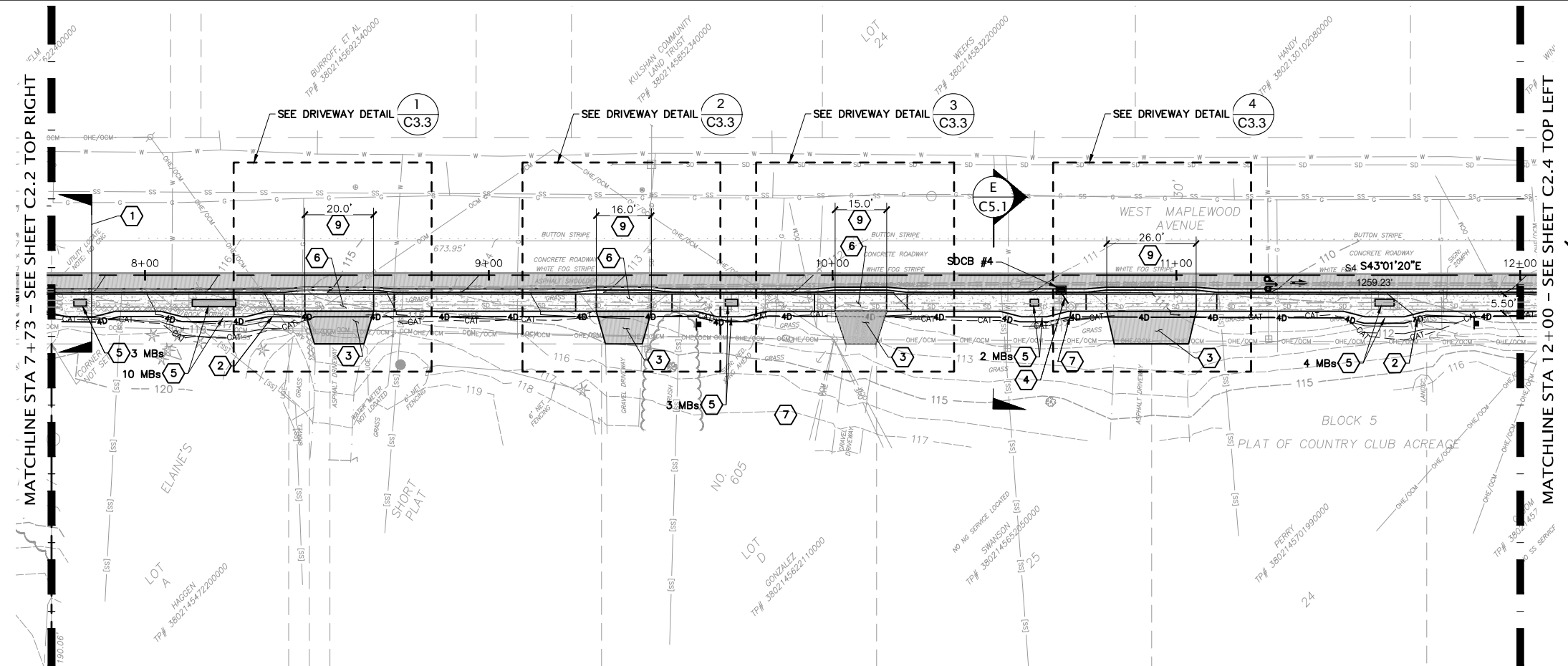
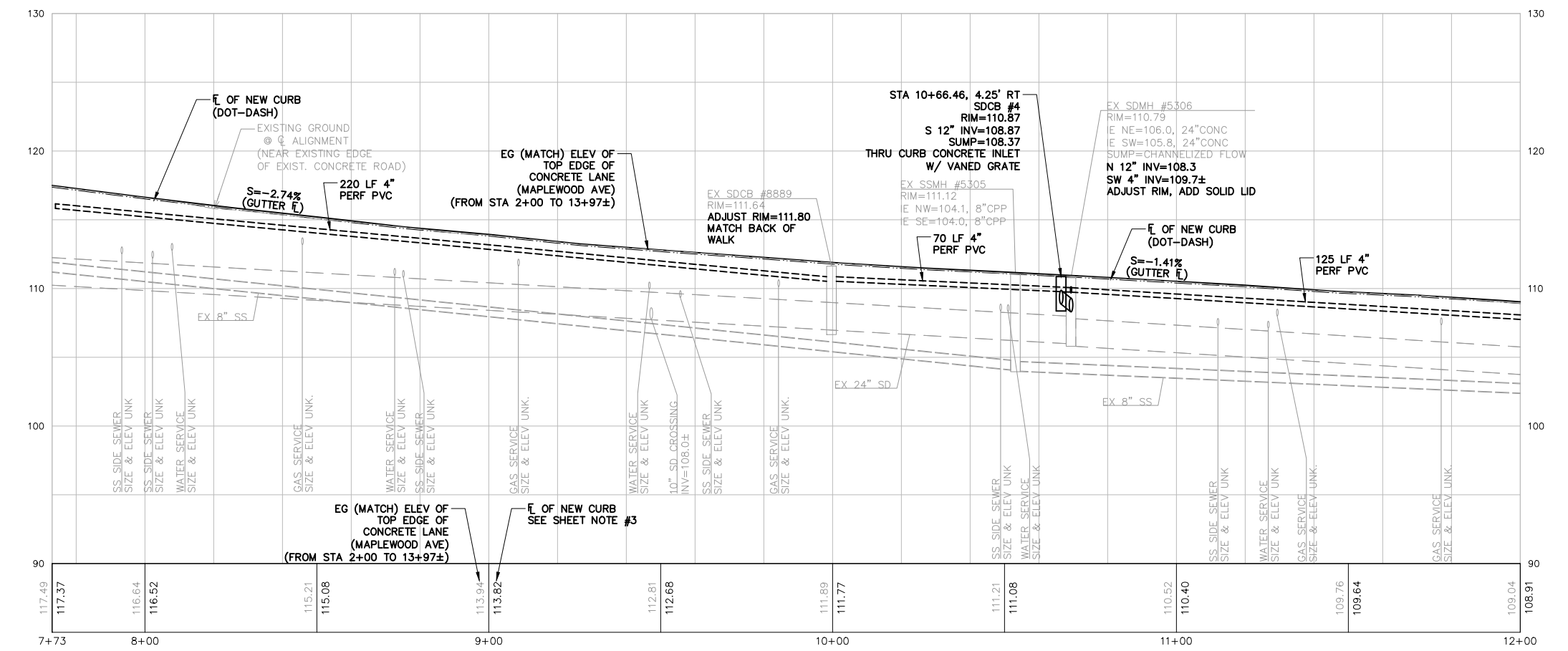


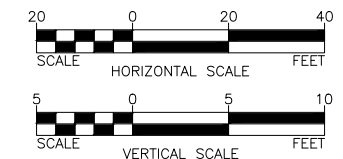
PLOT SETTINGS: WE Autocad PDF (General Documentation).pc3, WILSON 11X17, Portrait, 1:2, WE APWA_UNSCREENED.ctb
 W:\2022\2022-108 COB STORYBROOK (MAPLEWOOD-MCLEOD) PARK\DWG\02 ROW DWGS\2021_108_SET 2_C2.1 FRONTAGE IMPROVEMENTS.DWG - 11/30/2023 4:26 PM - Jeff Smith



- KEYED NOTES**
- 1 = NORTH OF STA 7+73 SIDEWALK IMPROVEMENTS. SEE SCHEDULE 'B'
 - 2 = STA 7+73 TO 14+00: BACK OF SIDEWALK DRAIN, 4" PERF PVC PER DR-520 CG-230 (C5.2) (C5.2)
 - 3 = ASPHALT CONCRETE DRIVEWAY PER CG-218 (C5.2)
 - 4 = 5 LF CPP @ 2.0%
 - 5 = MAILBOX (MB) POST AND WIDENED SIDEWALK TO MAINTAIN 5 FT OF UNOBSTRUCTED WIDTH PER REINSTALL MAILBOXES ON POST (MS-1050) (C5.4)
 - 6 = TYPE 2 CONCRETE DRIVEWAY PER CG-260 EXCEPT WITH ROLLED CURB (C5.2)
 - 7 = CONNECT SIDEWALK DRAIN TO SDCB DR-520 (C5.2)
 - 8 = NOT USED
 - 9 = ROLLED CURBAT DRIVEWAY, H=4" (2) (C5.3)



811 Call 811
 two business days before you dig



- SHEET NOTES:**
- SEE APPENDIX SHEETS FOR COMPLETE EXISTING CONDITIONS
 - FOR PROPOSED CATCH BASIN STRUCTURE TABLE SEE SHEET C5.3
 - CONFIRM GUTTER FLOW LINE IS LOWER THAN SAWCUT ELEVATION PRIOR TO POURING CONCRETE



4	
3	
2	
1	
Date	No

PROJECT ENGINEER	DJ
DESIGNED/DRAWN	PMT/JGS
INSPECTOR	XXX

DIRECTOR PUBLIC WORKS	ECJ
CITY ENGINEER	-
ASSISTANT DIRECTOR	-

CITY OF BELLINGHAM, WASHINGTON
 PARKS AND RECREATION DEPARTMENT
 ENGINEERING DIVISION

SCALE
 Horiz. As Shown
 Vert. As Shown

DATUM
 H: NAD 83/98
 V: NAVD 88

Job No. --
Date 11/30/2023
Field Bk.

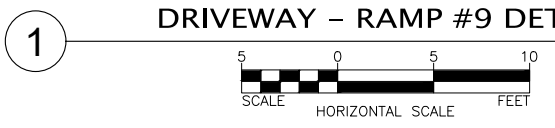
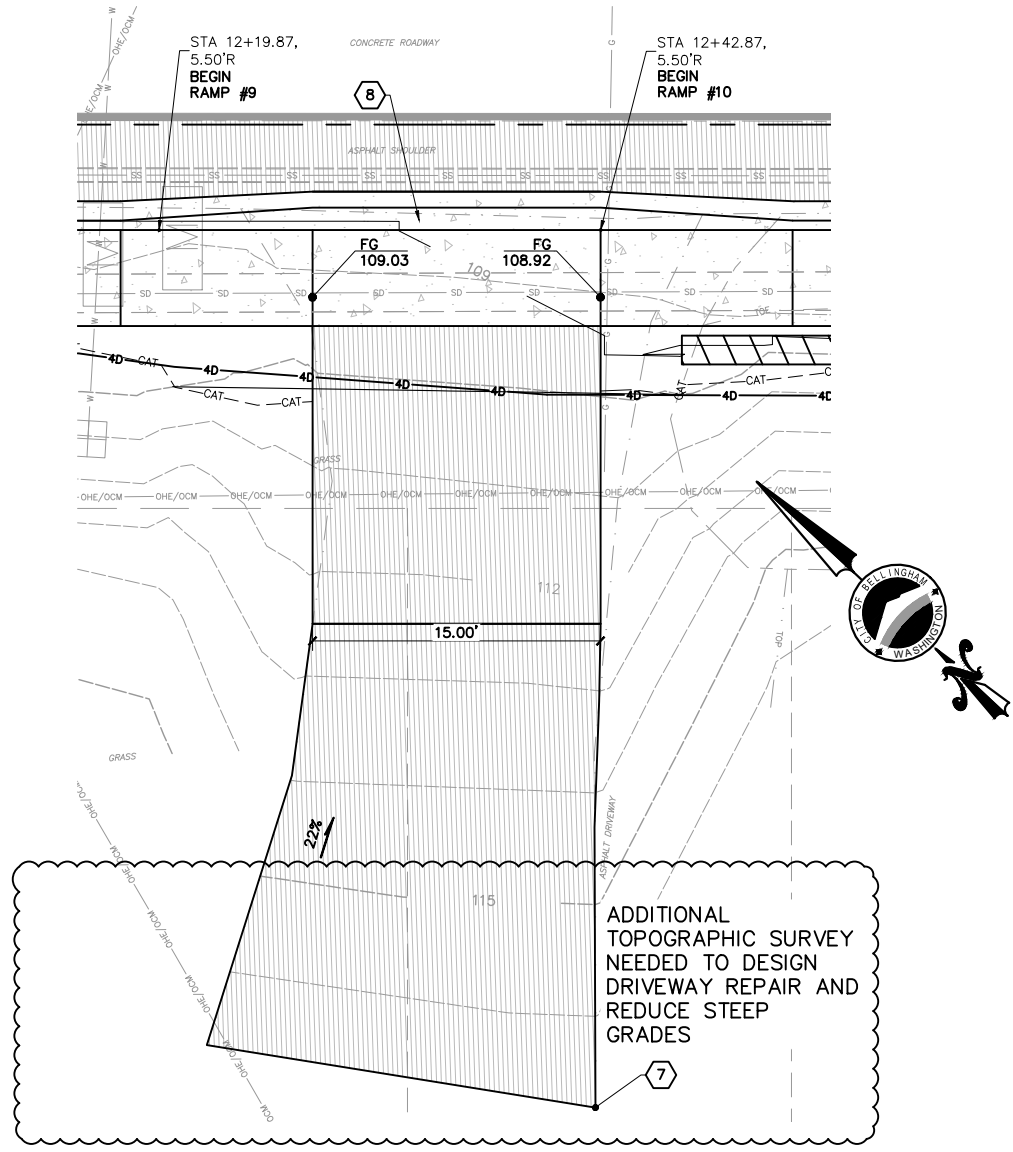
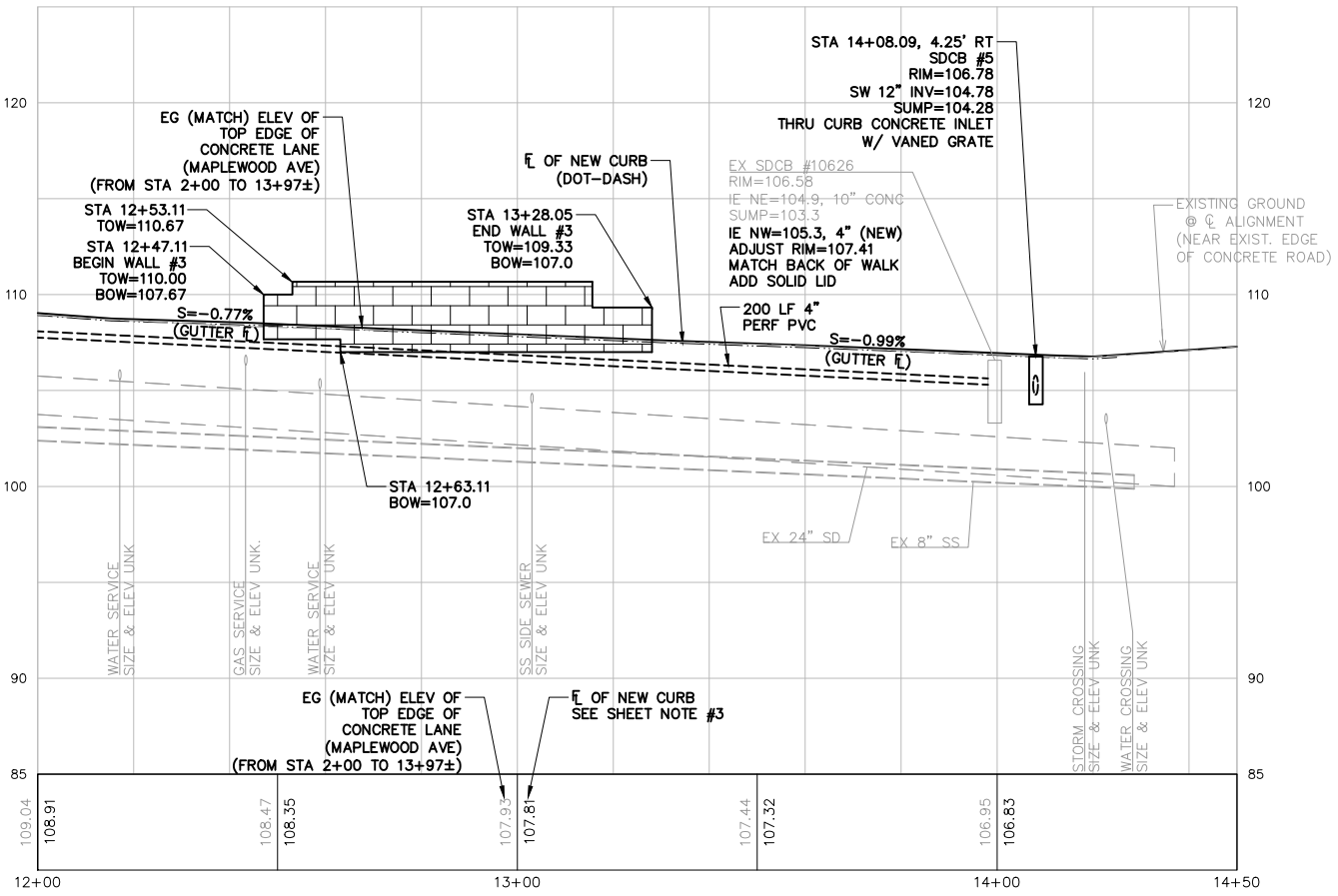
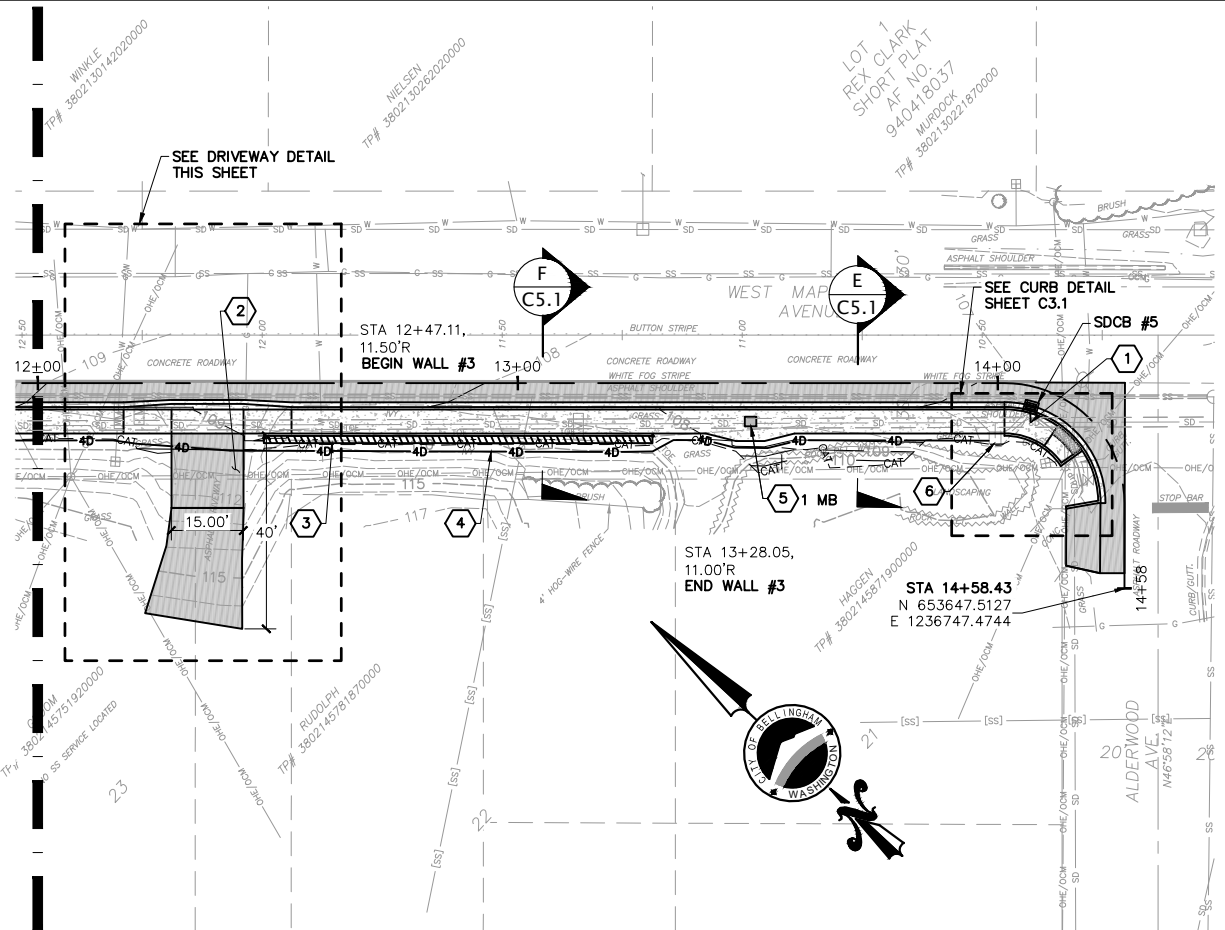
MCLEOD / MAPLEWOOD SIDEWALK IMPROVEMENTS
PLAN & PROFILE STA 7+73 TO 12+00, SCHEDULE C

DRAWING NO. C2.3
SHEET NO. 9 OF 30

CONTACT PERSON: _____

PLOT SETTINGS: WE AutocAD PDF (General Documentation)pc3, WILSON 11x17, Portrait, 1:2, WE APWA_UNSCREENED.ctb
 W:\2022\2022-108 COB STORYBROOK (MAPLEWOOD-MCLEOD) PARK\DWG\02 ROW DWGS\2021_108_SET 2_C2.1 FRONTAGE IMPROVEMENTS.DWG - 11/30/2023 4:26 PM - Jeff Smith

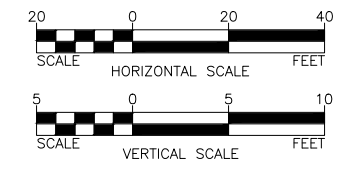
MATCHLINE STA 12+00 - SEE SHEET C2.3 TOP RIGHT



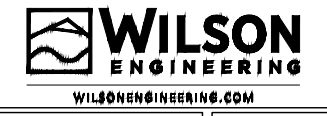
- KEYED NOTES**
- 1 = INSTALL INSERTA-TEE TO EX. 24" CONC. STORM MAIN INV=100.8±
 - 2 = ASPHALT CONCRETE DRIVEWAY PER CG-218 (C5.2)
 - 3 = GRAVITY BLOCK WALL, WALL #3 STA 12+47 TO STA 13+28 (C5.1)
 - 4 = STA 7+73 TO 14+00: BACK OF SIDEWALK DRAIN, 4" PERF PVC PER DR-520 CG-230 (C5.2) (C5.2)
 - 5 = MAILBOX (MB) POST AND WIDENED SIDEWALK TO MAINTAIN 5 FT OF UNOBSTRUCTED WIDTH PER MS-1050 REINSTALL MAILBOXES ON POST (C5.4)
 - 6 = CONNECT SIDEWALK DRAIN TO SDCB DR-520 (C5.2)
 - 7 = MATCH EXISTING
 - 8 = ROLLED CURB AT DRIVEWAY, H=4" (C5.3)



811 Call 811
two business days before you dig



- SHEET NOTES:**
- SEE APPENDIX SHEETS FOR COMPLETE EXISTING CONDITIONS
 - FOR PROPOSED CATCH BASIN STRUCTURE TABLE SEE SHEET C5.3
 - CONFIRM GUTTER FLOW LINE IS LOWER THAN SAWCUT ELEVATION PRIOR TO POURING CONCRETE



4	
3	
2	
1	
Date	No

PROJECT ENGINEER	DJ
DESIGNED/DRAWN	PMT/JGS
INSPECTOR	XXX

DIRECTOR PUBLIC WORKS	ECJ
CITY ENGINEER	-
ASSISTANT DIRECTOR	-

CITY OF BELLINGHAM, WASHINGTON
PARKS AND RECREATION DEPARTMENT
 ENGINEERING DIVISION

SCALE
 Horiz. As Shown
 Vert. As Shown

DATUM
 H: NAD 83/98
 V: NAVD 88

Job No. --
Date 11/30/2023
Field Bk.

MCLEOD / MAPLEWOOD SIDEWALK IMPROVEMENTS
PLAN & PROFILE STA 12+00 TO 14+50, SCHEDULE C

DRAWING NO. C2.4
SHEET NO. 10 OF 30

CONTACT PERSON: _____