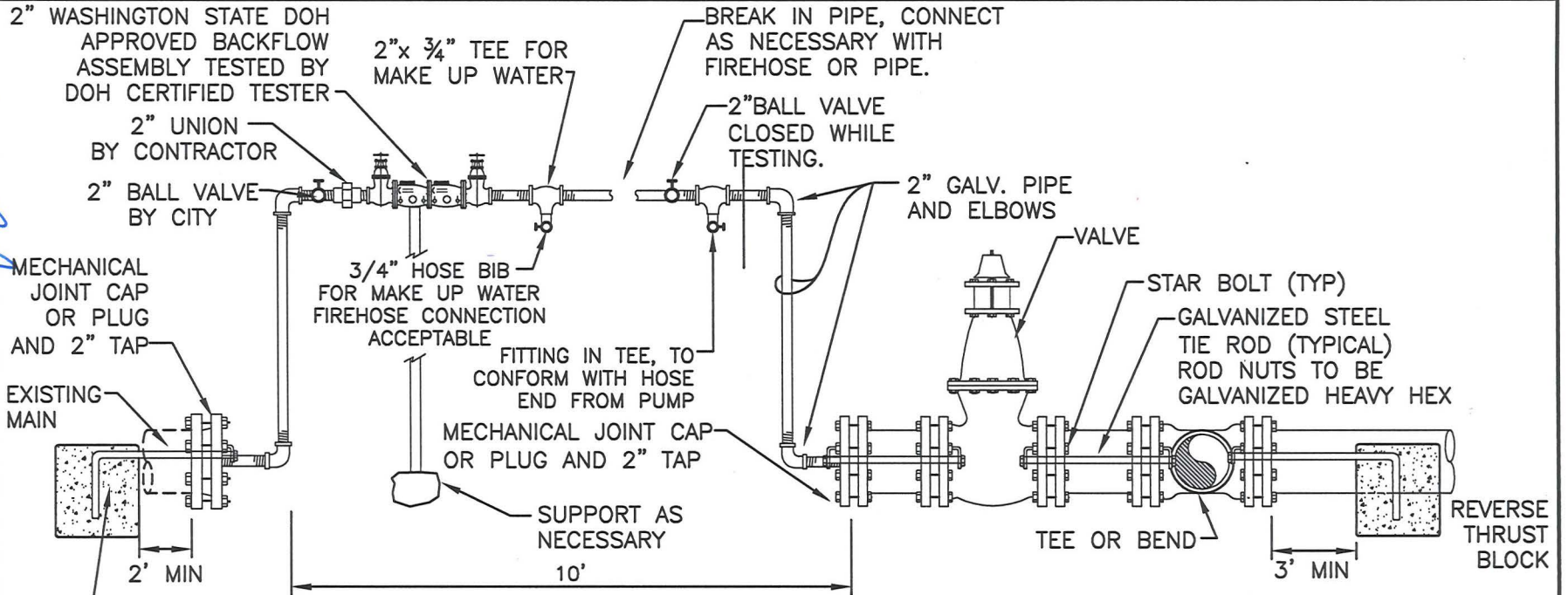


City Engineer

APPROVED
[Signature]
 Date 3/19/12

APPROVED



BLOCKING FOR CONNECTION

NOTE:
 MINIMUM 3000 PSI CONCRETE
 TO BE USED ON THRUST
 BLOCKS, TO BEAR AGAINST FIRM
 UNDISTURBED GROUND.

NOTE:
 CROSS CONNECTION CONTROL
 DEVICE SHALL BE TESTED PRIOR
 TO ACTIVATION OF MANIFOLD AS
 PER AWWA CROSS CONNECTION
 MANUAL CHAPTER 9(E)(1).

THRUST BLOCK DIMENSION TABLE

PIPE DIAM.	TEST PRESSURE (PSI)	BEND ANGLE	CONCRETE VOLUME (Ft ³)	CUBE SIZE (Ft)	TIE ROD DIAM.	TIE ROD EMBEDMENT	No OF RODS
4"	200	11¼°	6	1.8	¾"	17"	2
		22½°	12	2.3			
		45°	22	2.8			
6"	200	11¼°	14	2.4	¾"	17"	2
		22½°	27	3.0			
		45°	50	3.7			
8"	200	11¼°	25	2.9	¾"	17"	2
		22½°	48	3.6			
		45°	89	4.5			
10"	200	11¼°	38	3.4	¾"	17"	4
		22½°	75	4.2			
		45°	139	5.2			
12"	200	11¼°	55	3.8	¾"	17"	4
		22½°	108	4.8			
		45°	200	5.8			
14"	200	11¼°	75	4.2	¾"	17"	6
		22½°	147	5.3			
		45°	272	6.5			
16"	200	11¼°	98	4.6	¾"	17"	8
		22½°	192	5.8			
		45°	355	7.1			
					7/8"	24"	
					1"	27"	
					1"	30"	

CITY OF BELLINGHAM
 PRESSURE TEST CHARGE
 MANIFOLD

DRAWING
 WA-858