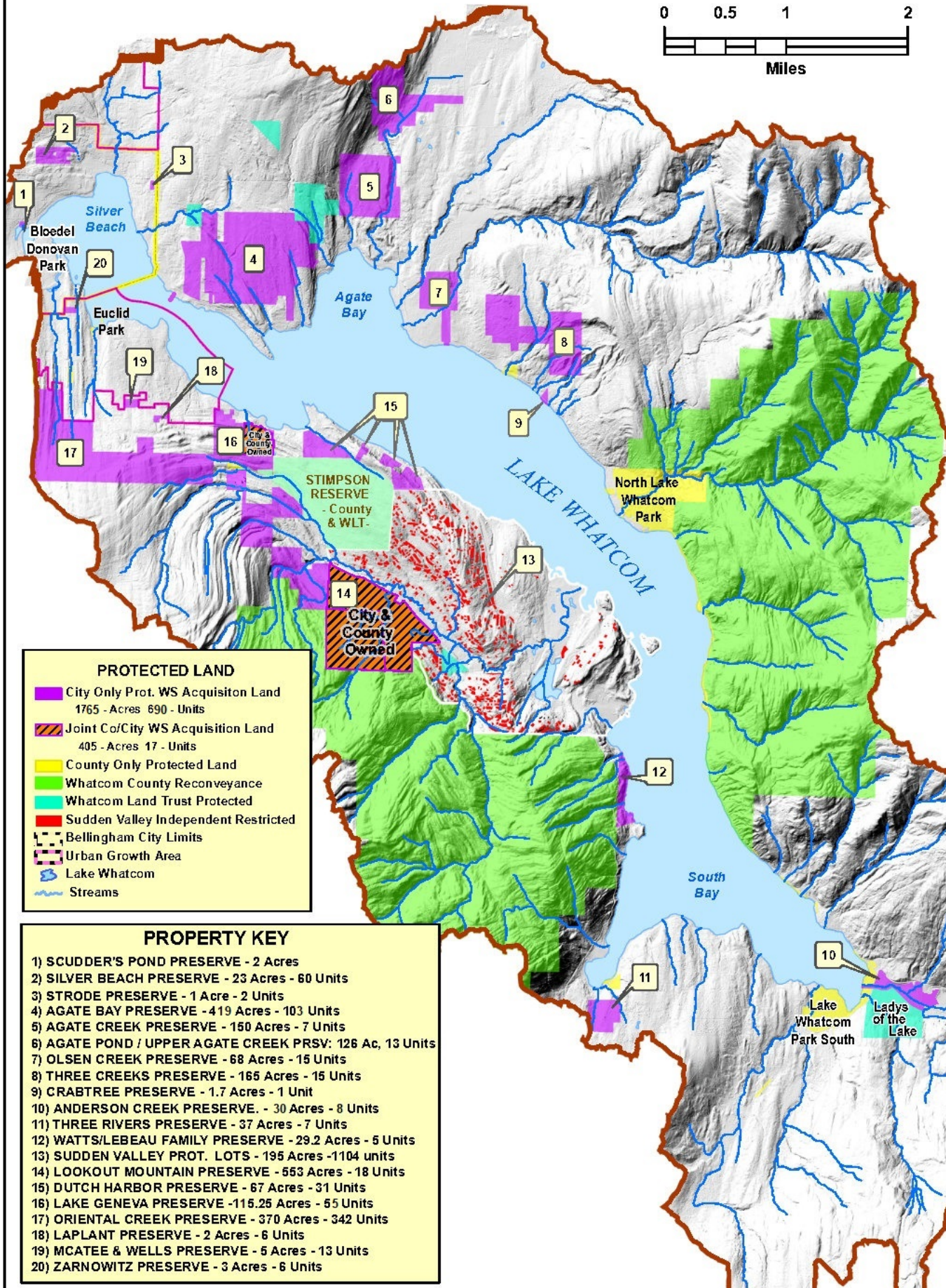
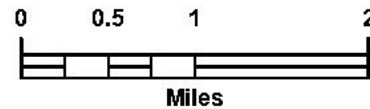




PROTECTED PROPERTY IN THE LAKE WHATCOM WATERSHED (As of 4 - 3 - 2020)



PROTECTED LAND

- City Only Prot. WS Acquisition Land
1765 - Acres 690 - Units
- Joint Co/City WS Acquisition Land
405 - Acres 17 - Units
- County Only Protected Land
- Whatcom County Reconveyance
- Whatcom Land Trust Protected
- Sudden Valley Independent Restricted
- Bellingham City Limits
- Urban Growth Area
- Lake Whatcom
- Streams

PROPERTY KEY

- 1) SCUDDER'S POND PRESERVE - 2 Acres
- 2) SILVER BEACH PRESERVE - 23 Acres - 60 Units
- 3) STRODE PRESERVE - 1 Acre - 2 Units
- 4) AGATE BAY PRESERVE - 419 Acres - 103 Units
- 5) AGATE CREEK PRESERVE - 150 Acres - 7 Units
- 6) AGATE POND / UPPER AGATE CREEK PRSV: 126 Ac, 13 Units
- 7) OLSEN CREEK PRESERVE - 68 Acres - 15 Units
- 8) THREE CREEKS PRESERVE - 165 Acres - 15 Units
- 9) CRABTREE PRESERVE - 1.7 Acres - 1 Unit
- 10) ANDERSON CREEK PRESERVE. - 30 Acres - 8 Units
- 11) THREE RIVERS PRESERVE - 37 Acres - 7 Units
- 12) WATTS/LEBEAU FAMILY PRESERVE - 29.2 Acres - 5 Units
- 13) SUDDEN VALLEY PROT. LOTS - 195 Acres -1104 units
- 14) LOOKOUT MOUNTAIN PRESERVE - 553 Acres - 18 Units
- 15) DUTCH HARBOR PRESERVE - 67 Acres - 31 Units
- 16) LAKE GENEVA PRESERVE -115.25 Acres - 55 Units
- 17) ORIENTAL CREEK PRESERVE - 370 Acres - 342 Units
- 18) LAPLANT PRESERVE - 2 Acres - 6 Units
- 19) MCATEE & WELLS PRESERVE - 5 Acres - 13 Units
- 20) ZARNOWITZ PRESERVE - 3 Acres - 6 Units