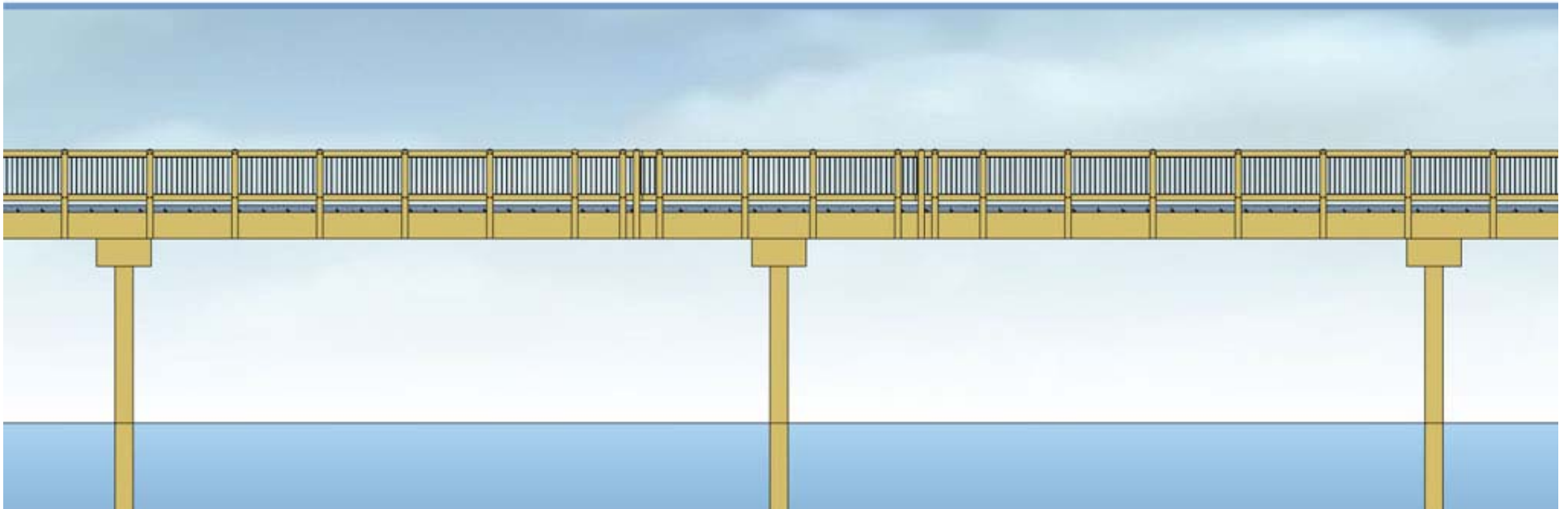


# Boulevard Park



Public Meeting  
June 26, 2008

# AGENDA



- Introductions
- Project Background
  - Park History
  - Public Process
  - Funding
  - Schedule
- Background Studies
  - Shoreline Assessment
  - Pattle Point Condition Assessment
  - Cultural Resources Assessment
  - Focused Environmental Site Assessment and Geotechnical Study
  - Eelgrass Survey
- Initial Concepts
- Permit Process and Next Steps
- Q&A

# PROJECT BACKGROUND



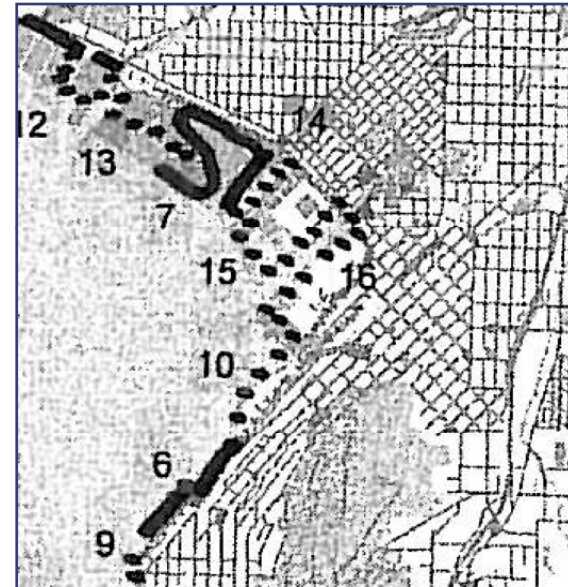
- Park History



# PROJECT BACKGROUND



- Public Process
  - Parks, Recreation and Open Space Plan 2002



Recommended Trails Plan

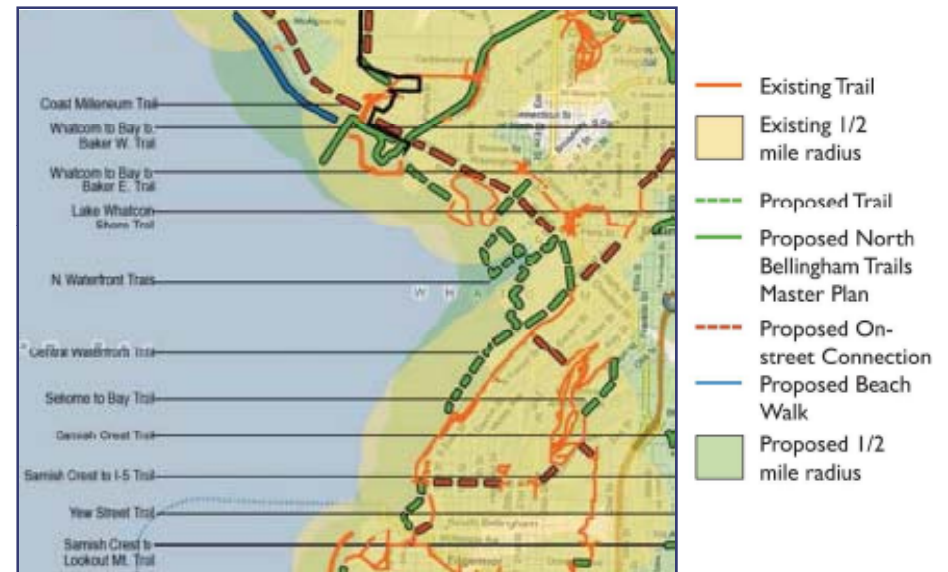
- shoreline trails – existing
- shoreline trails – proposed
- boardwalk/promenades – existing
- boardwalk/promenades – proposed



# PROJECT BACKGROUND



- Public Process
  - Parks, Recreation and Open Space Plan (Updated 2008)



Recommended Trails Plan

# PROJECT BACKGROUND



- Public Process
  - Waterfront Futures Group
  - Vision & Framework
  - Plan 2004

## RECOMMENDATIONS

### Culture & History

- Collaborate with Native American neighbors.
- Conduct an inventory to identify all the historic and native sites.

### Connections

- Construct an over-water trail to connect Boulevard Park to the Cornwall Landfill similar to the over water connection from Boulevard Park to Taylor Avenue Dock.



Waterfront Futures Group Fall Recommendations

25

# PROJECT BACKGROUND



- Public Process
  - Waterfront District Development Plan
    - Identifies connection between waterfront district plan and waterfront

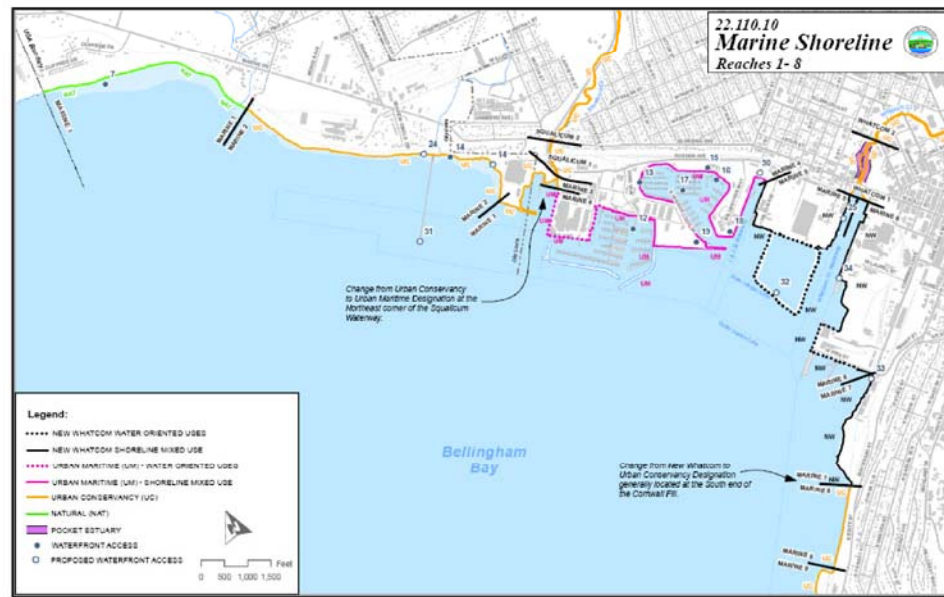


# PROJECT BACKGROUND



- Public Process:
    - Shoreline Master Program Update 2007
- Public Access “Goals and Objectives” includes:

*Overwater walkway from the south end of the Cornwall Avenue Landfill to the north end of Boulevard Park*





# PROJECT BACKGROUND



- Public Process
  - Greenway Levy III
  - City wide vote
  - Listed as Waterfront Redevelopment Trail



# PROJECT BACKGROUND



- Funding Sources

- Greenway Levy III

- Heritage Parks Improvements Boulevard Park Trestle & Beach Improvements \$1.5M

- Greenway Levy III

- Waterfront Redevelopment Trail \$4M

- 2005 Federal Enhancement Grant

- \$1.6M

- Ecology Remediation Grant (Focused Environmental Site Assessment)

- Matching funding available upon completion of Agreed Order between City and Ecology

# PROJECT BACKGROUND



- Schedule
  - Feasibility Study 2008
  - Pattle Point Trestle Improvements 2009
  - Shoreline Improvements 2010
  - Over water walkway permitting through 2011
  - Boulevard Park Cleanup 2012



# SITE BACKGROUND STUDIES



- Shoreline Assessment
- Pattle Point Condition Assessment
- Cultural Resources Assessment

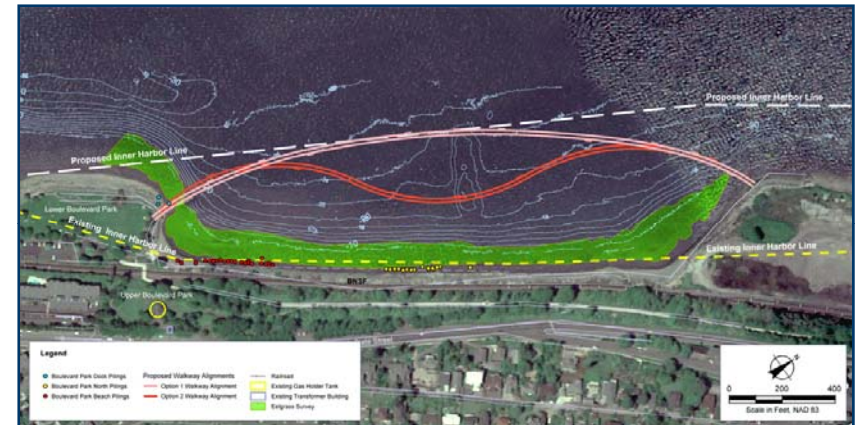




# SITE BACKGROUND STUDIES



- Focused Environmental Site Assessment and Geotechnical Study
  - Data Gap Analysis
  - Sampling and Analysis Plan
  - Sediment Sampling
    - Surface Sediments
    - Sediment Cores/Borings
  - Geophysical and Bathymetry Surveys



# SITE BACKGROUND STUDIES



- Remedial Investigation/Feasibility Study
  - Agreed Order Negotiations with Ecology
  - Historical Coal Gasification Plant
  - Work Plans for Additional Sampling & Testing
  - Separate Public Participation Process

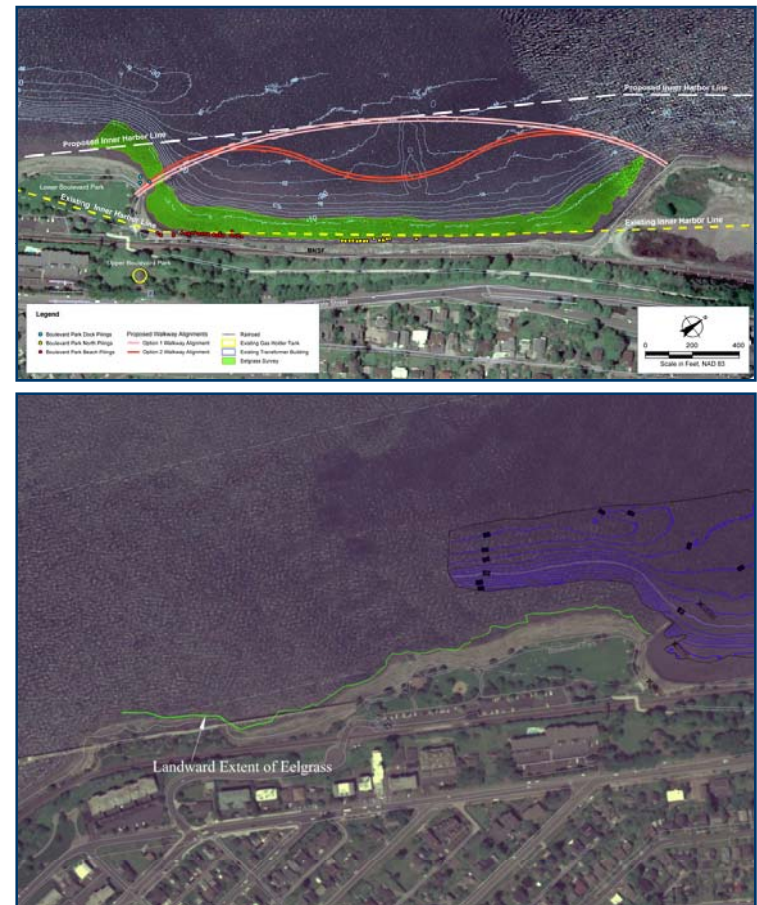


# SITE BACKGROUND STUDIES



- Eelgrass

- Present in the Boulevard Park area and Pattle Point
- Very important aquatic habitat for a range of aquatic species including salmon
- Eelgrass and macroalgae survey conducted in June using latest survey protocols.
- Survey provides basis for avoiding and minimizing eelgrass and macroalgae
- Results show clear limits of eelgrass and no macroalgae.

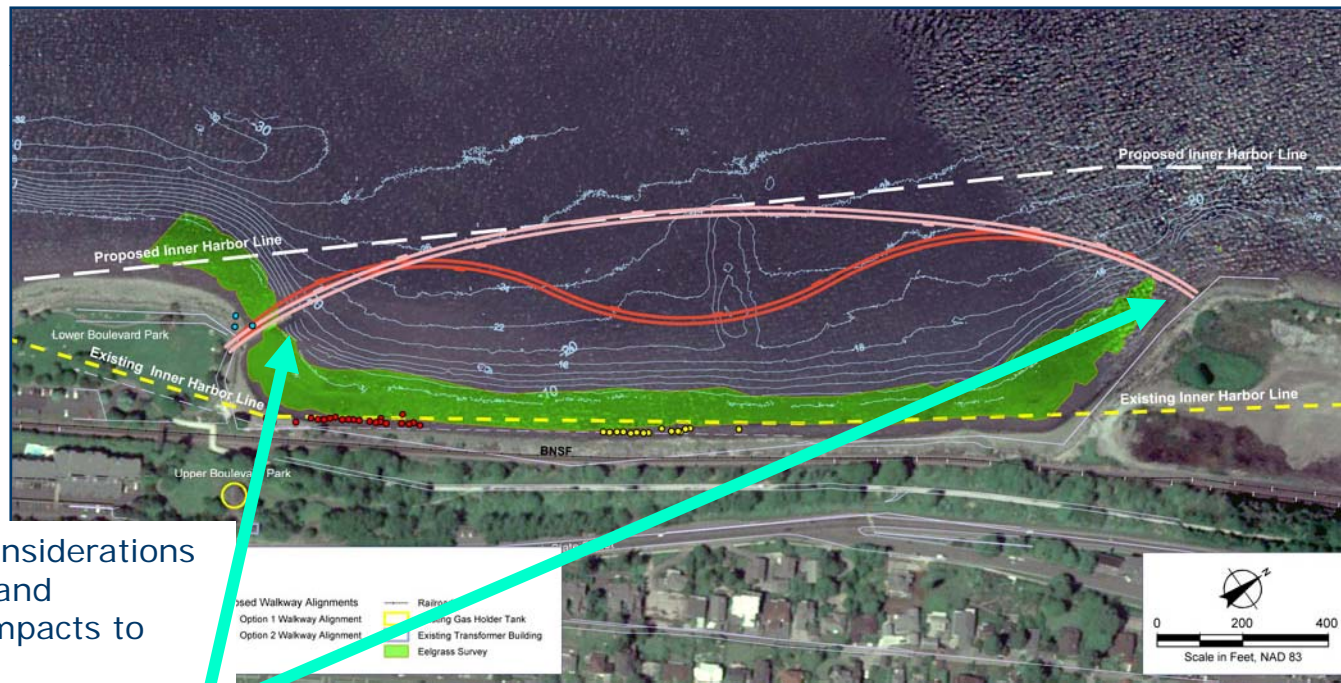




# SITE BACKGROUND STUDIES



- Eelgrass and Concept Design
  - Approach: avoid and minimize impacts



Important considerations for avoiding and minimizing impacts to eelgrass:

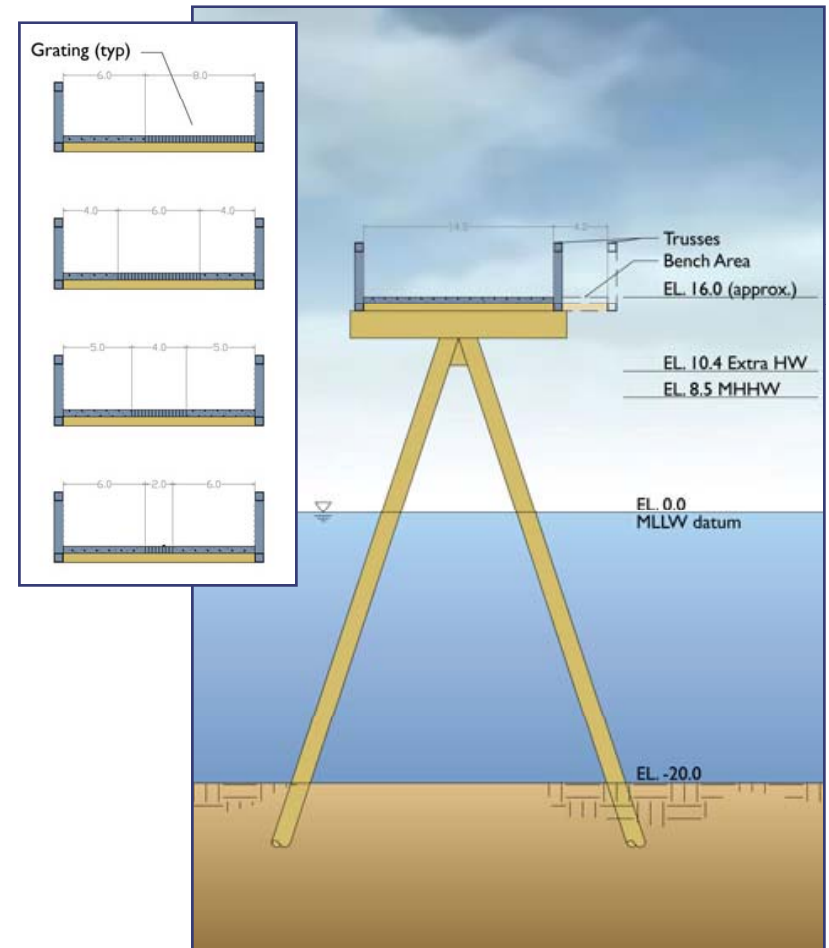
- Location of approaches
- Water depth under trail
- Walkway surface



# INITIAL CONCEPTS



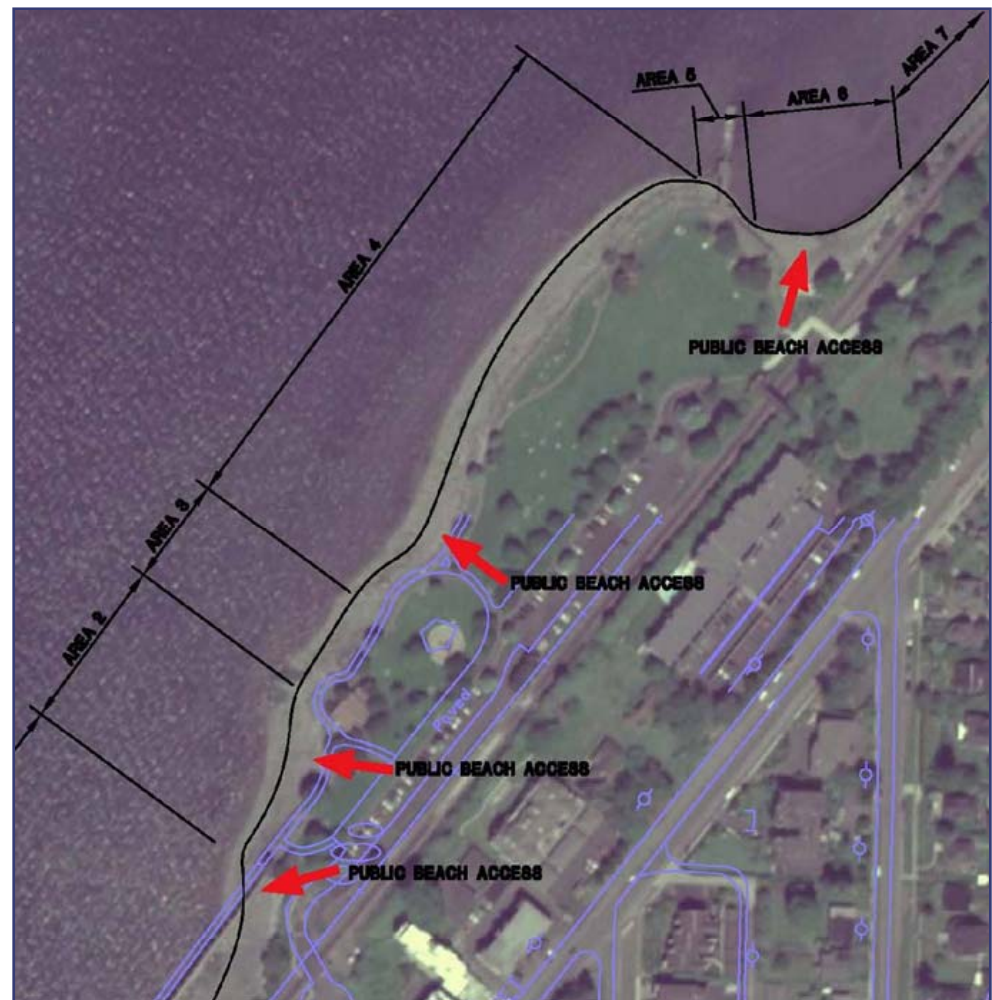
- Pattle Point Trestle Renovation
  - Existing stringers are at the end of design life
  - Improve walking surface and ADA access
  - Reuse piling and pile caps
  - Replace superstructure
  - Increase width to 12' plus bench areas
  - Utilize combination of grating and solid concrete decking



# INITIAL DESIGN CONCEPTS



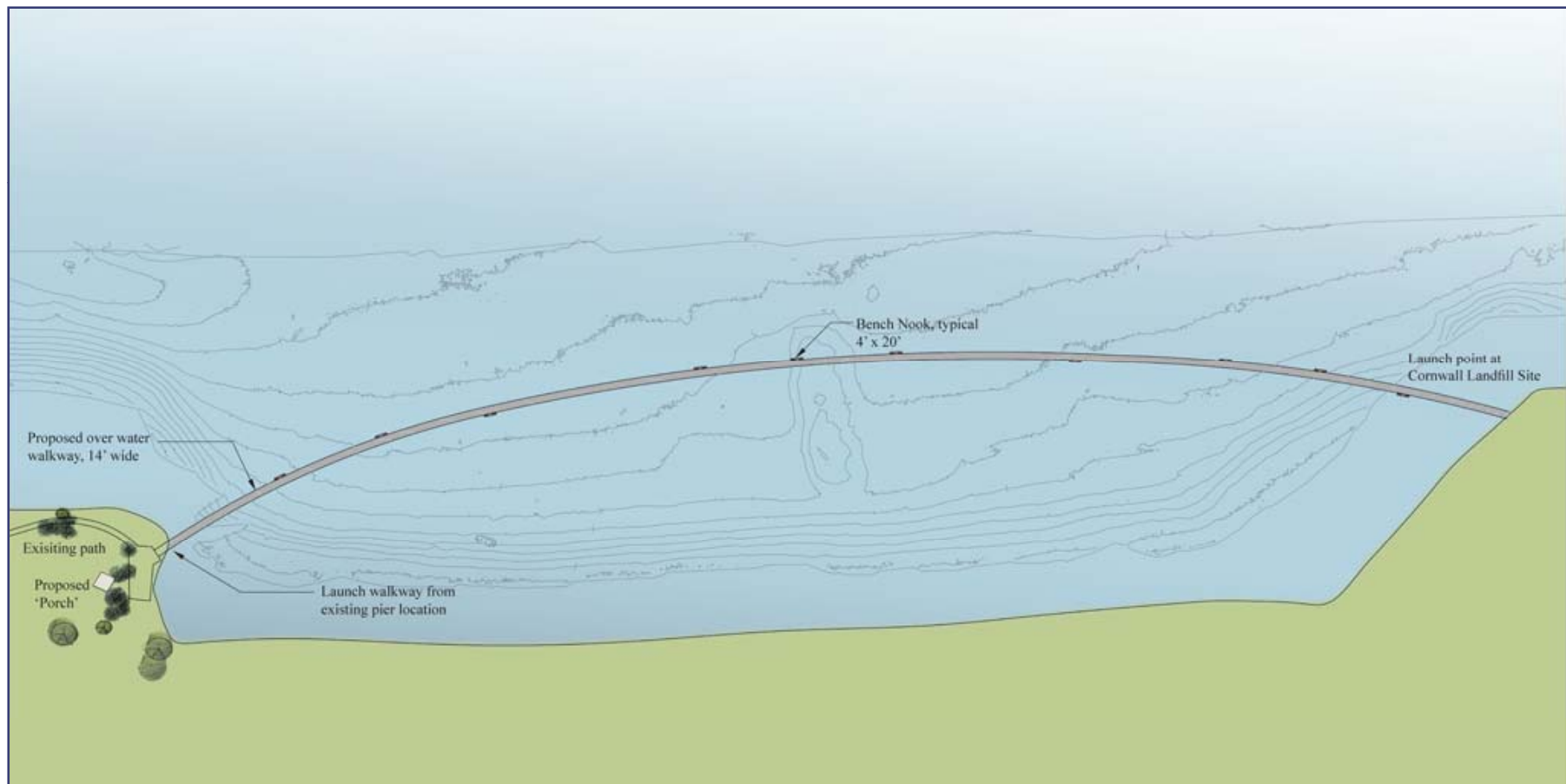
- Shoreline Improvements
  - Enhance public access and environment
  - Four proposed areas of enhancement
  - Removal of concrete & rock rubble
  - Create gradual sloped pocket beach areas
  - Minor trail relocation



# INITIAL CONCEPTS



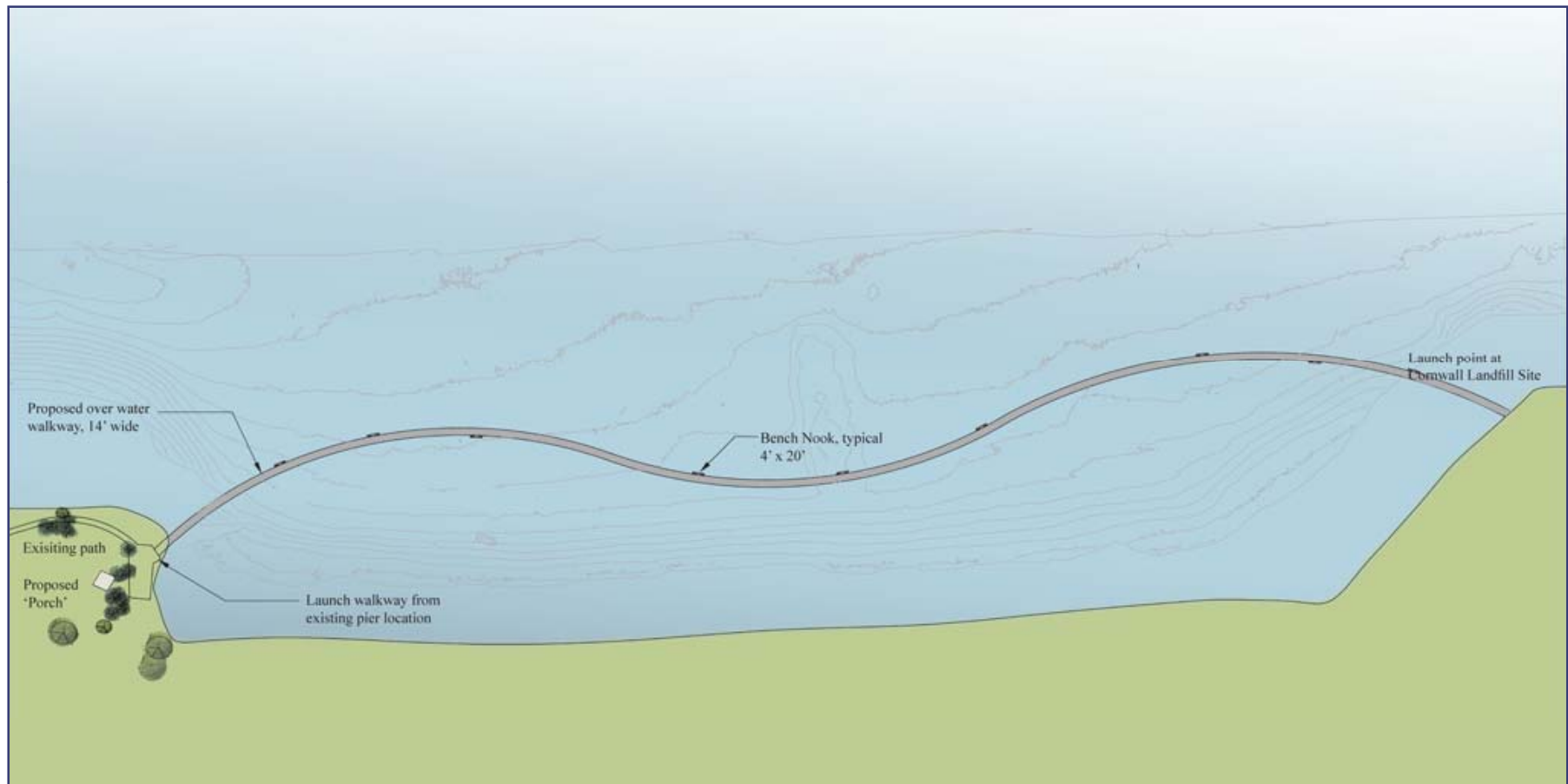
- Overwater Trail Layout Option 1 – Arc Style



# INITIAL DESIGN CONCEPTS



- Overwater Trail Layout Option 2 – S Curve Style

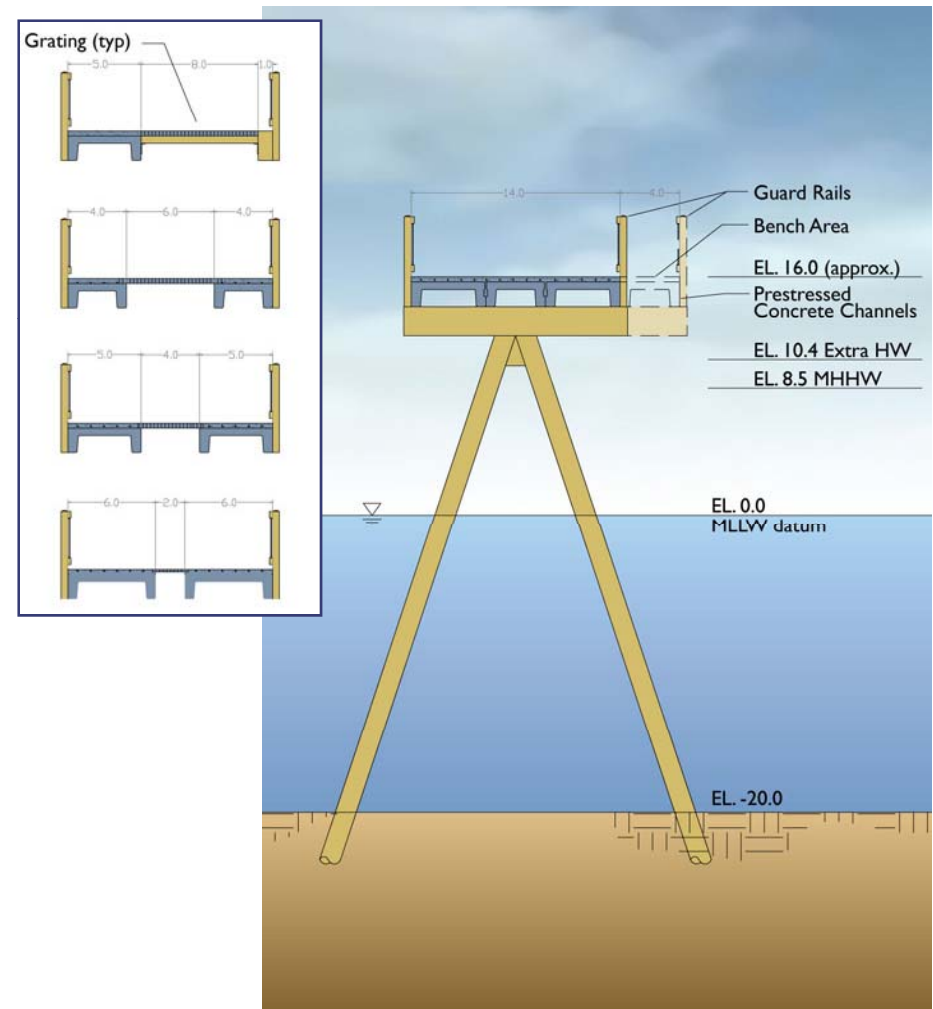




# INITIAL DESIGN CONCEPTS



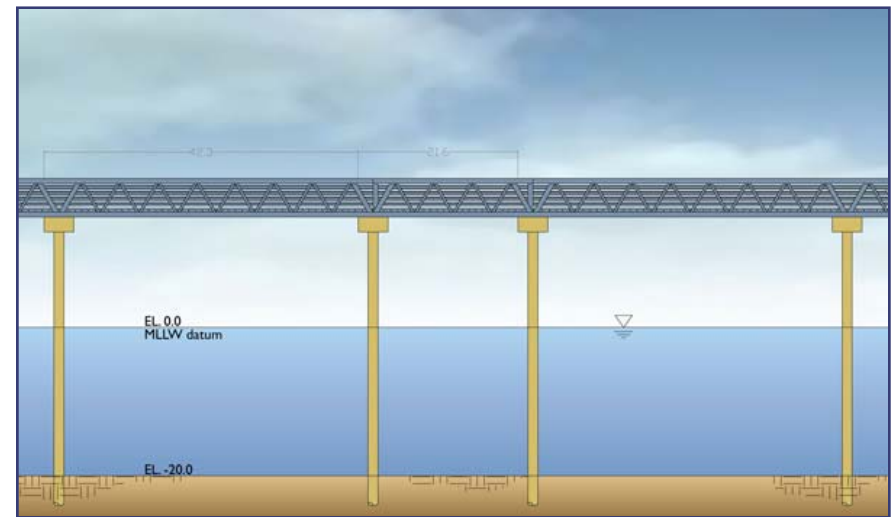
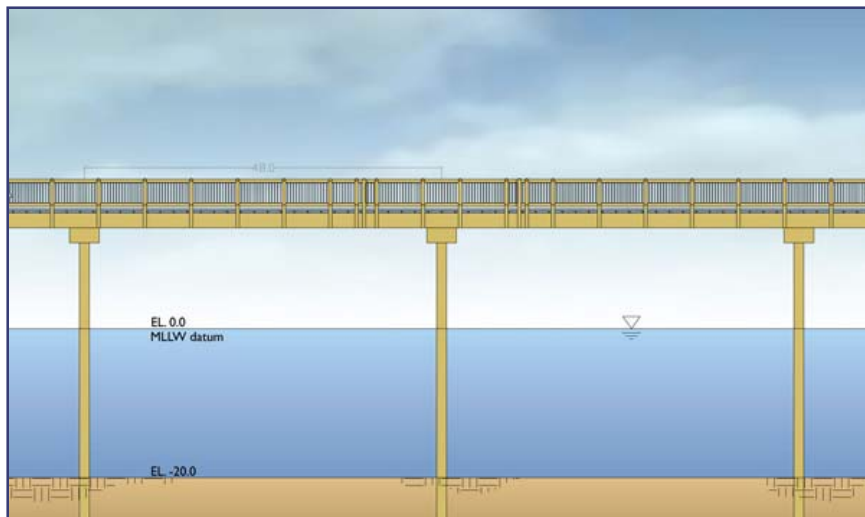
- 14' clear walkway
- Bench areas
- Decking – combination of grating and solid concrete surfacing
- Handrail
- Low level security lighting



# INITIAL DESIGN CONCEPTS



- Structure Options
  - Channel Design (similar to Taylor St Dock)
  - Truss Design



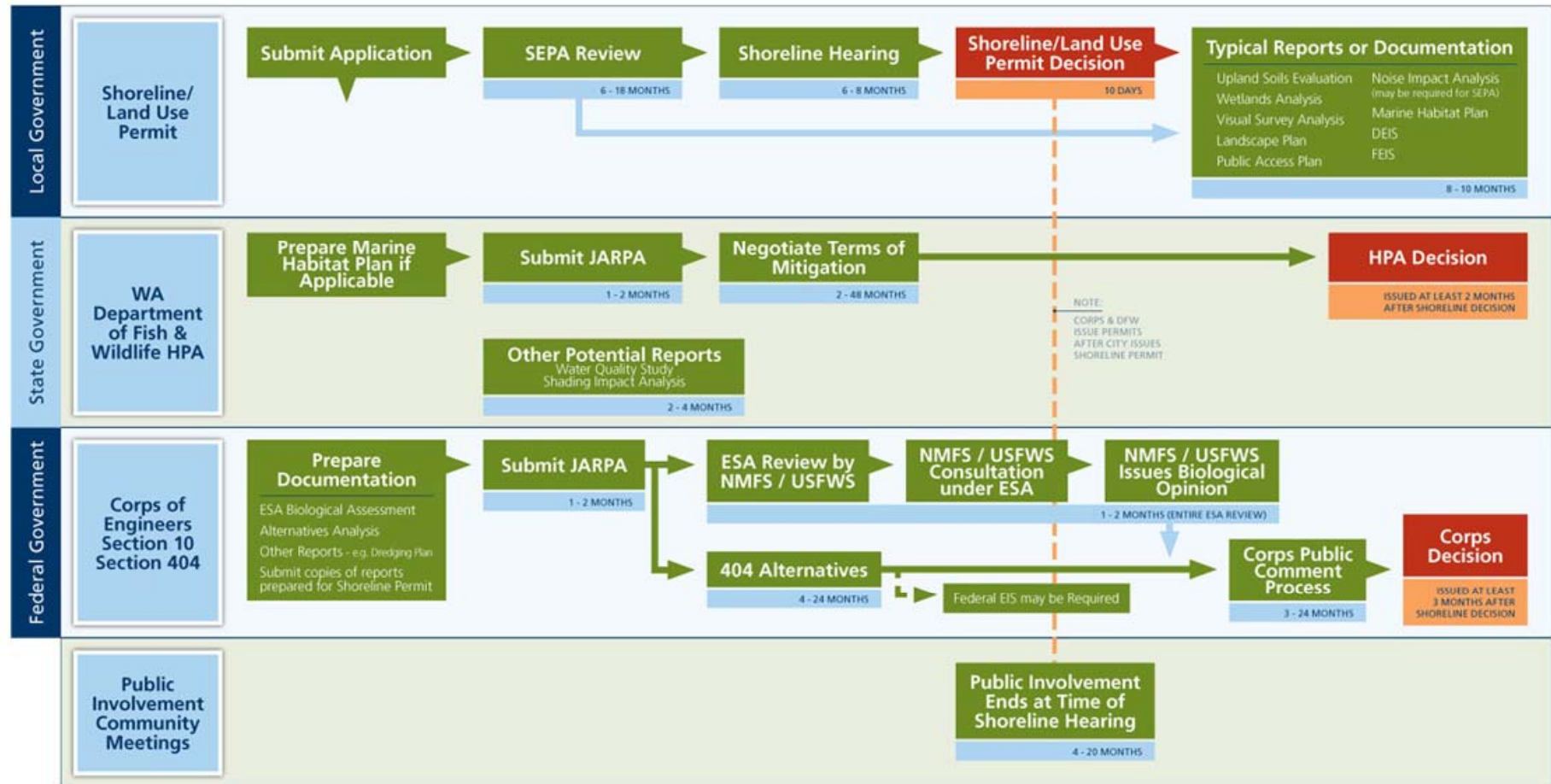
# INITIAL DESIGN CONCEPTS



- Conceptual Options



# TYPICAL LAND USE & SHORELINE PERMITTING PROCESS





# PERMIT AGENCY RELATIONSHIPS



## City of Bellingham

Shoreline Substantial Permit  
SEPA

## State Government

Department of Fish & Wildlife  
Hydraulic Project Approval  
(HPA)

Department of Ecology-  
Water Quality Permit

## Federal Government

Corps of Engineers §10 or 404  
ESA Compliance - NOAA (NMFS),  
USFWS



# SHORELINE PERMITTING



## Key Issues In water

Water depths

Nearshore Habitat

Vegetation – eelgrass &  
surf smelt

Overwater Coverage

Fish Windows & Closures

Cultural Resources



# NEXT STEPS



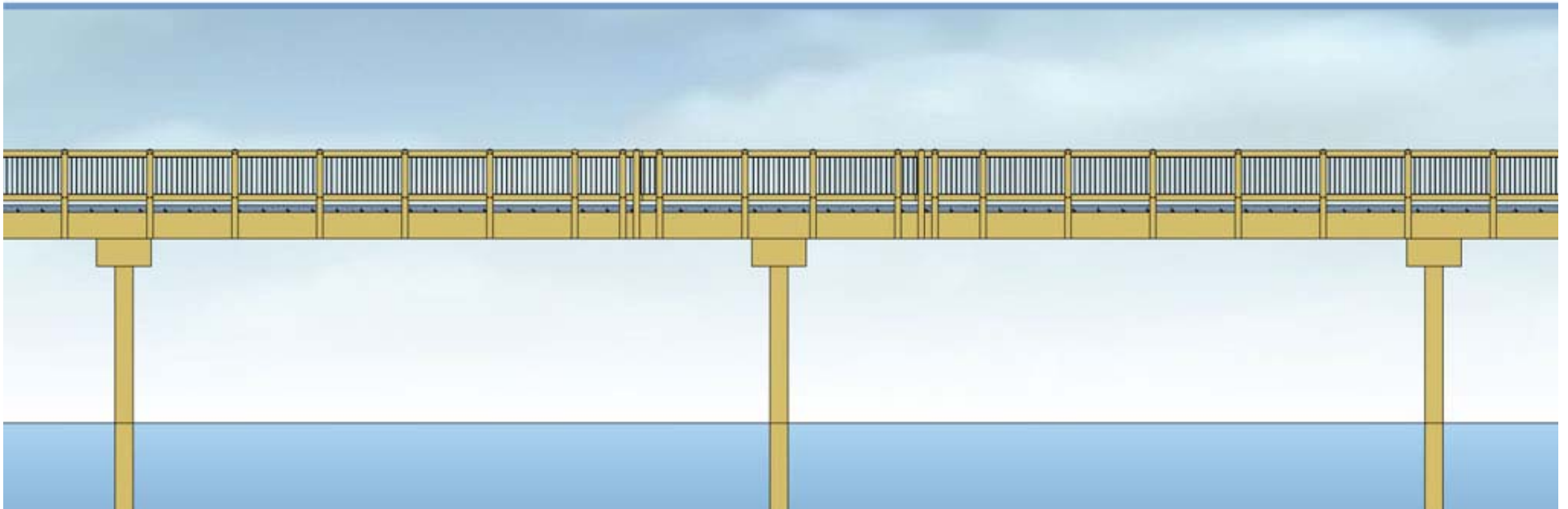
- Negotiate DNR lease
- Permitting agency approval (tribes, Army Corps, WDFW, DNR, Port, etc)
- Improvements to existing Pattle Point construction
- Focused ESA for Waterfront Project, RI/FS for Coal Gasification Site (Boulevard Park), Engineering/Design and Construction
- Cleanup for Cornwall Landfill
- Seek grants from RCO and other sources
- Construct Shoreline improvements at Boulevard Park
- Construct over water walkway



# Q & A



# Boulevard Park



Public Meeting  
June 26, 2008