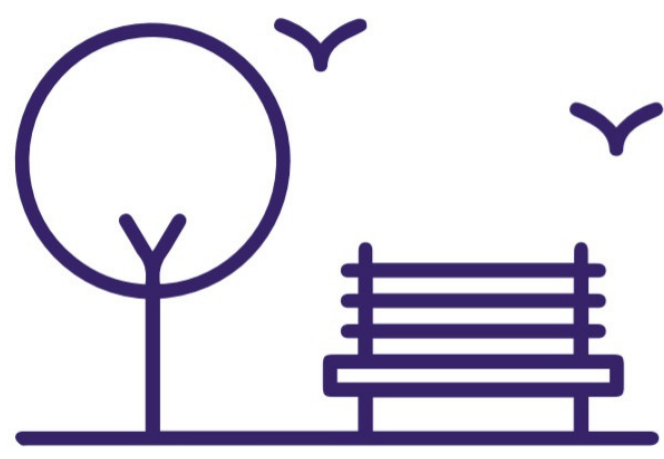


City Services

How does annexation affect your neighborhood?



The Growth Management Act of 1990 says that all areas defined as urban growth areas (UGAs) should be in a city. Whatcom County does not have the resources to support urban areas while the City of Bellingham does. Due to this, both the County and City agree that these areas should be part of the City of Bellingham to best serve the residents of the UGAs.



Lower utility costs for City of Bellingham water and sewer services and extension of service to vacant properties (upon the submission of an application)

Consideration for the City of Bellingham to improve public park spaces (trails, playfields, etc.) identified in the Parks, Recreation and Open Space (PRO) Plan



Inclusion in City planning and budgeting for parks, infrastructure, and other neighborhood improvements

Increased levels of service provided by the City of Bellingham police and fire departments



The ability to vote in the City of Bellingham elections along with representation on the Bellingham City Council

Establishment of Neighborhood Associations officially recognized by the City of Bellingham and representation on the Mayor's Neighborhood Advisory Commission



Depending on the UGA you are located in, there will be varying potential increased in stormwater fees and reduced property taxes and water bills.

Check your FAQ sheet to review estimated costs for your neighborhood



Access to city and state funding for neighborhood development through programs such as Small and Simple Grants and Safe Routes to School



UNIVERSITY *of* WASHINGTON
Bellingham Annexation Research Initiative

