



Downtown Improvement Gardens Final Project Review

February 10 , 2014



City of
Bellingham Public Works

Project Summary

- Pocket bioretention facilities (raingardens)
- Stormwater runoff quality improvement
- Greenspace enhancements
- Pedestrian improvement component
- Aesthetic maintenance 'stewards'
- Cornwall/Maple Combined Stormwater Overflow (CSO) Improvement – 2013 Pilot Project
- Seeking Greenroads Certification

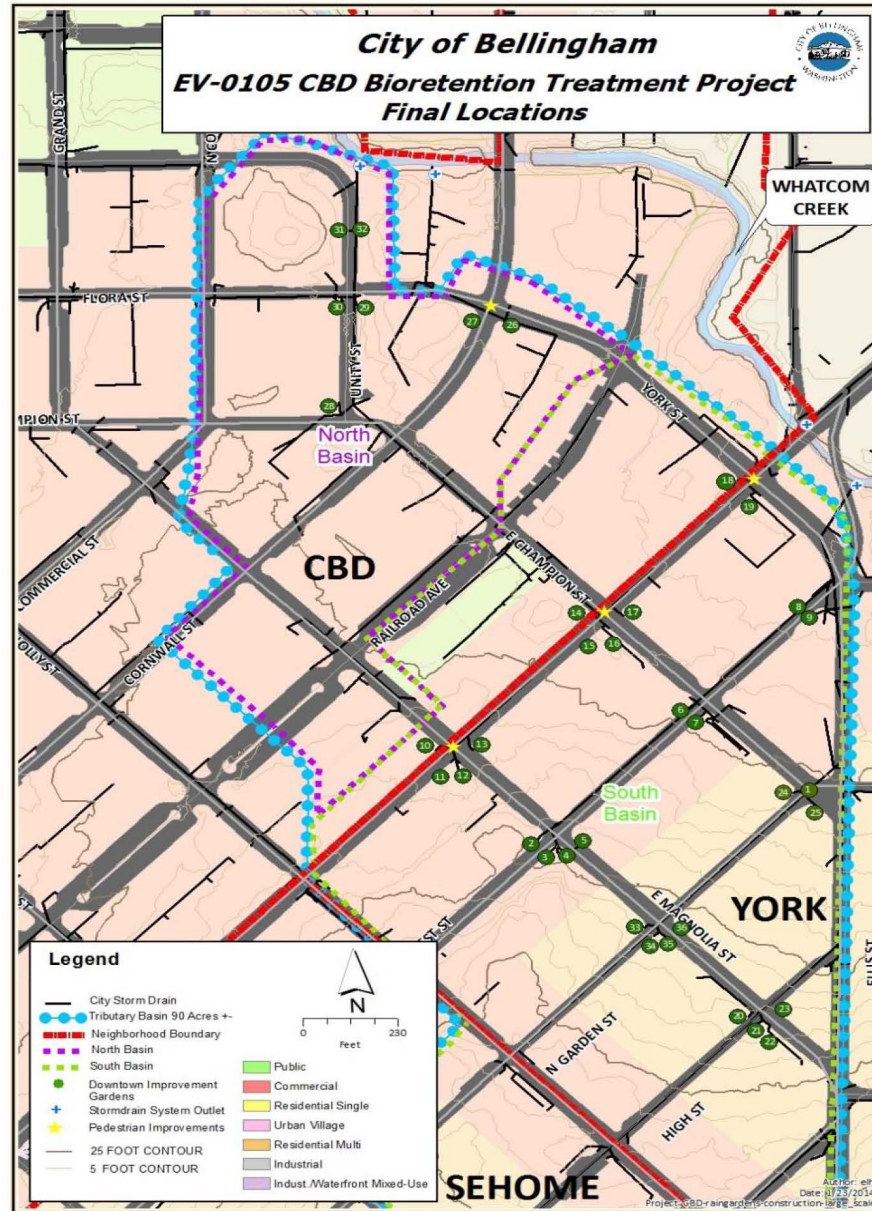
Project Scope

- Treats stormwater for 80+ acres of urban area (final design)
- Uses bioretention and infiltration with overflow to existing storm system
- Provides green-space
- Gains two parking spots
- Increases low-maintenance plantings



Location Determination

- Scored each site in 2012
- Discussed with property/business owners
- Targeted pedestrian improvements
- Minimized parking impacts
- Coordinated locations with other Public Works projects
- Finalized locations in December 2013



Maintenance

- Hydraulic Structures
 - year 1 – Contractor
 - year 2+ – Public Works Operations
- Bioretention Plantings
 - year 1 & 2 – Contractor
 - year 3+ - Public Works Operations
- Aesthetic – Downtown Improvement Gardens (DIG) Steward program

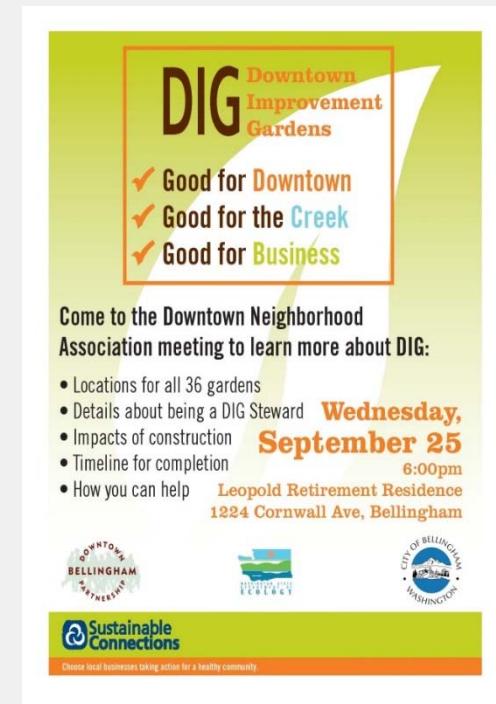


Funding/Schedule

- 2012 Ecology grant funded (stormwater)
- 25% City match
- Additional street funds for pedestrian improvements
- Maintenance funding – Stormwater Operations
- Coordination with watermain work
- Bid – February/March 2014
- Construction – March to May 2014
- DIG Steward training – May 2014

Outreach

- Collaboration with Sustainable Connections and Downtown Bellingham Partnership
- Two public Open Houses
- One-on-one meetings with business/property owners
- Coordination with Planning Dept.
- Preconstruction postcard – February 2014
- Steward maintenance training – May 2014



DIG Steward Program

- CBD businesses in project area
- Biotrention maintenance training
- Promotional plaque at bioretention
- 2-year pledge for aesthetic maintenance
- Information for future 'stewards'

DIG

Find out if your business can be a DIG Steward.

Contact:
Sustainable Connections
360 647-7093
www.sustainableconnections.org
or
Downtown Bellingham
360 527-8710
www.downtownbellingham.com

Good for Downtown
Good for the Creek
Good for Business

- Improves downtown's sense of place through enhanced vegetation
- Improves water quality of Whatcom Creek
- Adds pedestrian safety with added green islands

Find out if your business can be a DIG Steward.

To learn more visit www.cob.org and search for DIG or contact:
Project Manager
Freeman Anthony, P.E.
faanthony@cob.org
360 778-7925

This project is funded by the Washington State Department of Ecology.

Sustainable Connections
100 local businesses taking action for a healthy community.

CITY OF BELLINGHAM Low Impact Development

CITY OF BELLINGHAM WASHINGTON

DIG
Downtown Improvement Gardens



Questions?

Freeman Anthony, P.E., Project Manager
778-7924, fanthony@cob.org



City of
Bellingham Public Works