

McLeod Road Culvert Replacement

Project Overview: EV-0101

This project replaces an existing corrugated metal pipe arch culvert that is 8 ft. wide, 6 ft. tall, and 46 ft. long and partially blocks fish passage under E. McLeod Road, on Baker Creek. The new aluminum bottomless box culvert is 15 feet wide by 5.7 feet tall. This larger culvert will meet WDFW requirements for fish passage.

Project Detour

A section of E. McLeod Road approximately 300 feet south of Telegraph road will be closed temporarily, and the section from Primrose Lane to James Street will be temporarily opened as a detour to provide access to those properties isolated by the roadway closure. This is necessary due to the nature of the work, the utilities around the work area, and the limited space available for construction.

Project Details

- Status - Construction
- Contract Awarded - 8/11/14
- Contract Amount - \$293,263
- Contractor - Stremler Gravel
- Completion Date: December 31, 2015
- Final Contract Amount: \$377,634.70
- Vicinity Map

Affected Neighborhoods

- King Mountain
- Meridian

Participating Departments

- Public Works

contacts

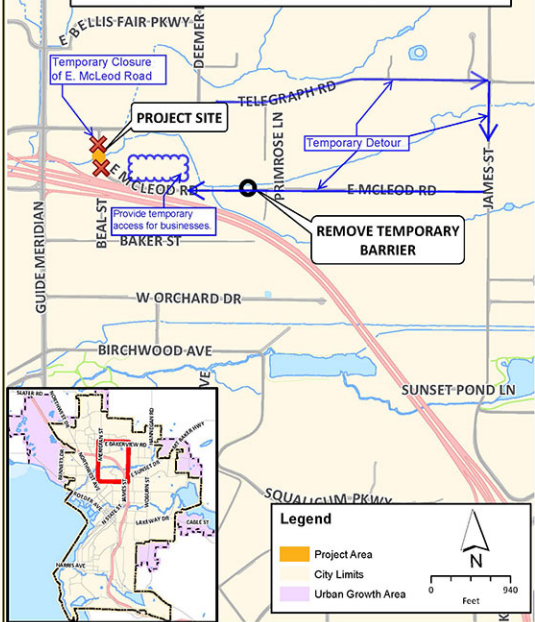
Larry Scholten, P.E.

Project Engineer

Phone: (360) 778-7923

[Public Works Contacts](#)

City of Bellingham EV-0101 McLeod Culvert Replacement Upgrade and Repair Existing Culvert



Legend

- Project Area
- City Limits
- Urban Growth Area

0 Feet 940

