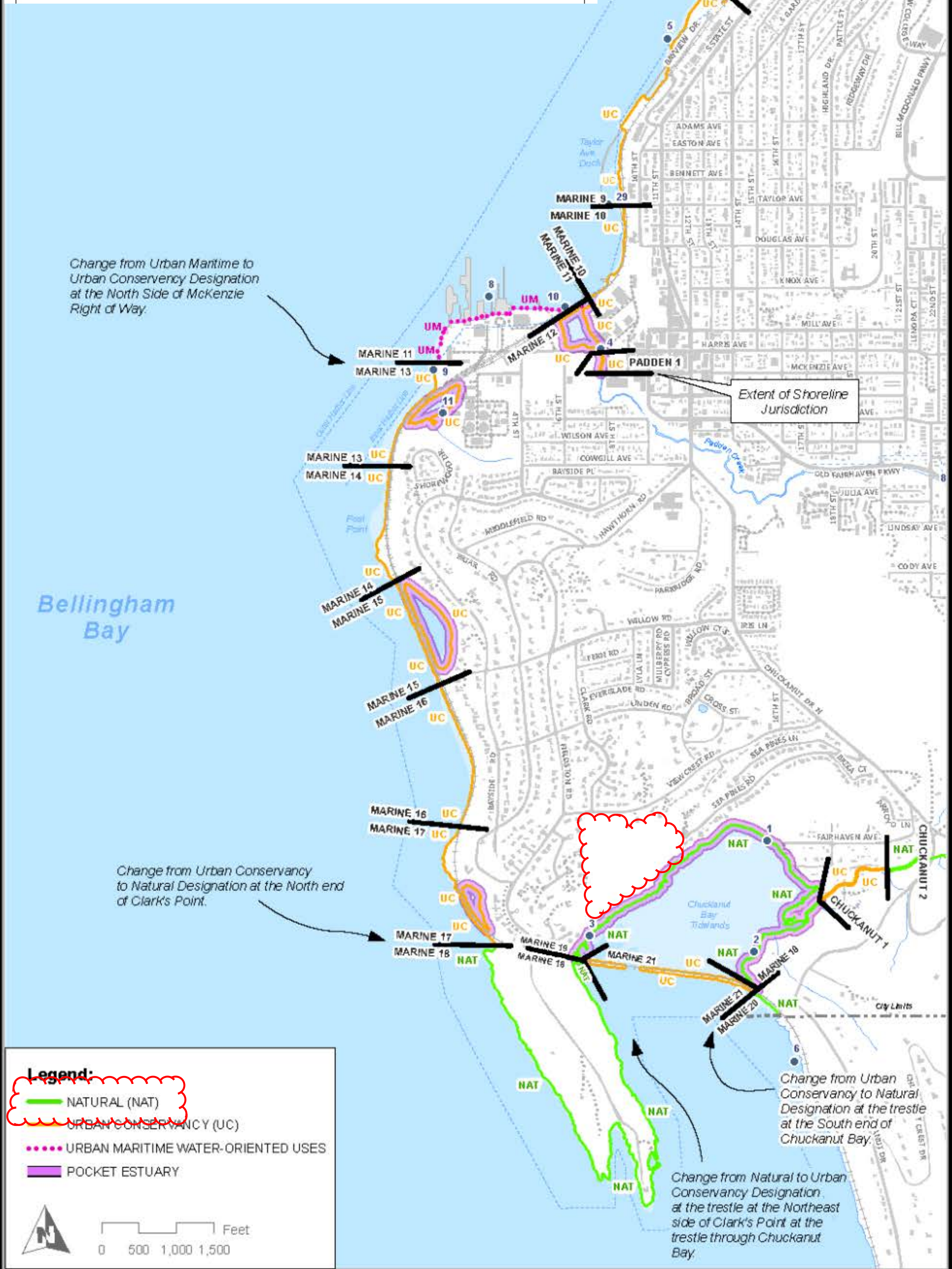


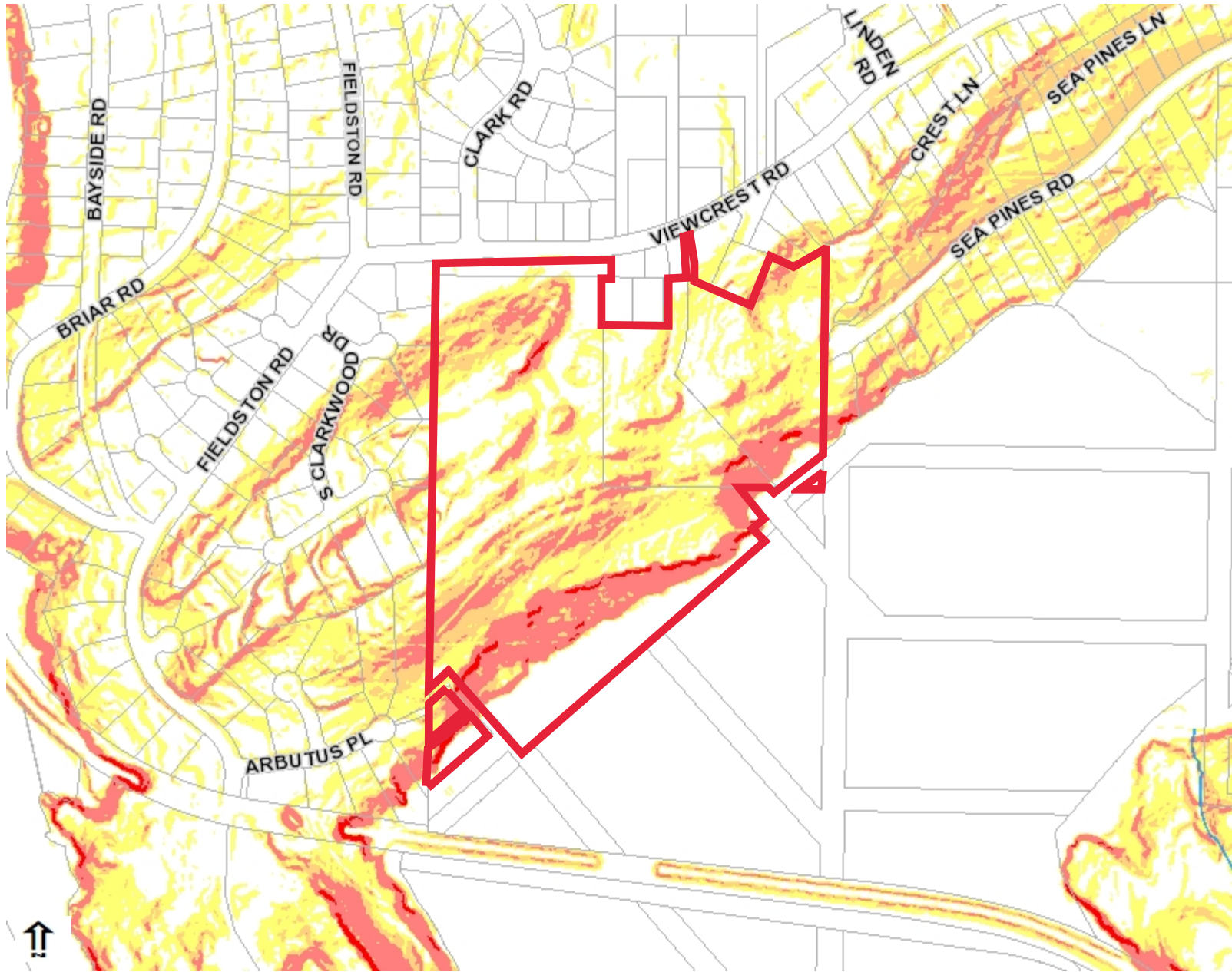
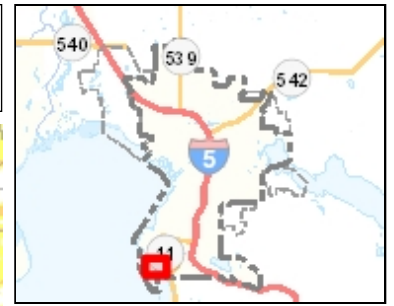
Table 22.11.030(A) NATURAL Development Regulation Matrix

22.11.10
Marine Shoreline
 Reaches 9 - 21



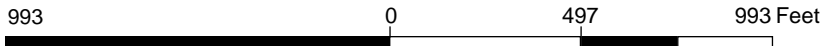
NATURAL - MARINE					
Reach #	Setback ¹ (from buffer edge)	Buffer (min - max)	Height	Pub Acc Req'd ²	Hab Rest Req'd ³
Marine 1 and 18 - 20	15'	200'	35' max / >35' = variance	subject to BMC 22.08.090	N





Legend

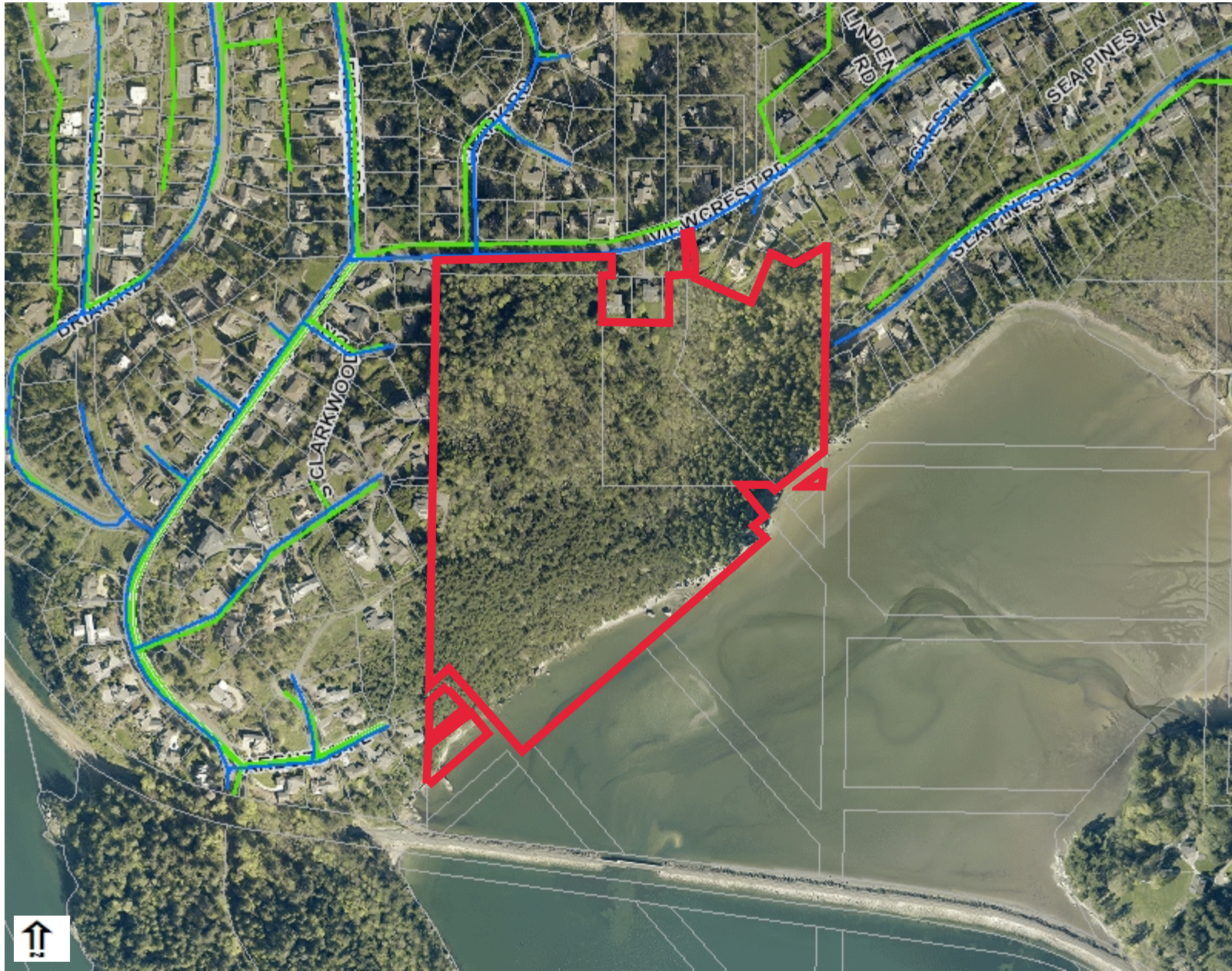
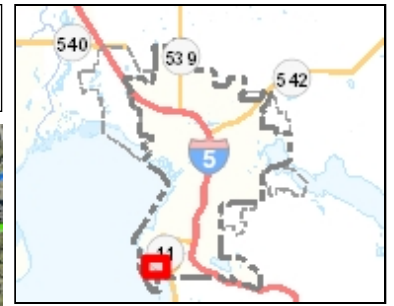
- Streams
- Culvert
- Stormwater Main
- Stream Centerline
- MTCA Areas (Model Toxic Control Act)
- Washington Roads Labels
- Bellingham Streets Street View
- County Roads Detail
- Tax Parcels
- <all other values>
- Care Facility
- Hospital
- Schools
- Schools
- ▲ Colleges/Universities
- ▲ Elementary, Middle, High Schools
- Private School or Preschool
- ▲ Fire Stations
- City Boundary
- Urban Growth Area
- Trails
- Railroads
- ... Ferries
- Interstate Polygons
- Street
- Interstate
- Airport
- Open Channel Streams
- Parks



THIS MAP IS NOT TO BE USED FOR NAVIGATION

Notes
Printed: 10/23/2019 3:07:39 PM

The City of Bellingham has compiled this information for its own use and is not responsible for any use of this information by others. The information found herein is provided simply as a courtesy to the public and is not intended for any third party use in any official, professional or other authoritative capacity. Persons using this information do so at their own risk and by such use agree to defend, indemnify and hold harmless the City of Bellingham as to any claims, damages, liability, losses or suits arising out of such use. Contact the Whatcom County Assessors office (360-778-5050) for the most up to date parcel information.

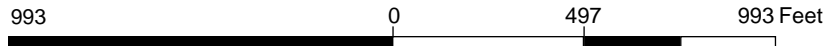


Legend

- Water Access Points
- Water Main
 - City Main; Active; Potable
 - City Main; Under Construction; Potable
 - City Main; Active, UC; Untreated
 - - Private Main; Active; Potable
- Reservoirs
- Sewer Access Points
- Sewer Gravity Mains
 - ✕ City Mains, Inactive
 - City Mains, Active
 - City Mains, Under Construction
 - - WD10, A; Private Mains, Active; PVT, A; WWU, A
 - - Private Mains, Under Construction
- Sewer Pressurized Mains
 - COB - Active
 - COB - Under Constr.
 - ✕ COB - Inactive
 - Private, Active
- Washington Roads Labels
- Bellingham Streets Street View
- County Roads Detail
- Tax Parcels
 - <all other values>
 - Care Facility
 - Hospital
 - Schools
- Schools
 - ▲ Colleges/Universities
 - ▲ Elementary, Middle, High Schools
 - Private School or Preschool
- ▲ Fire Stations
- City Boundary
- Urban Growth Area
- Trails
- Railroads
- ... Ferries

Notes

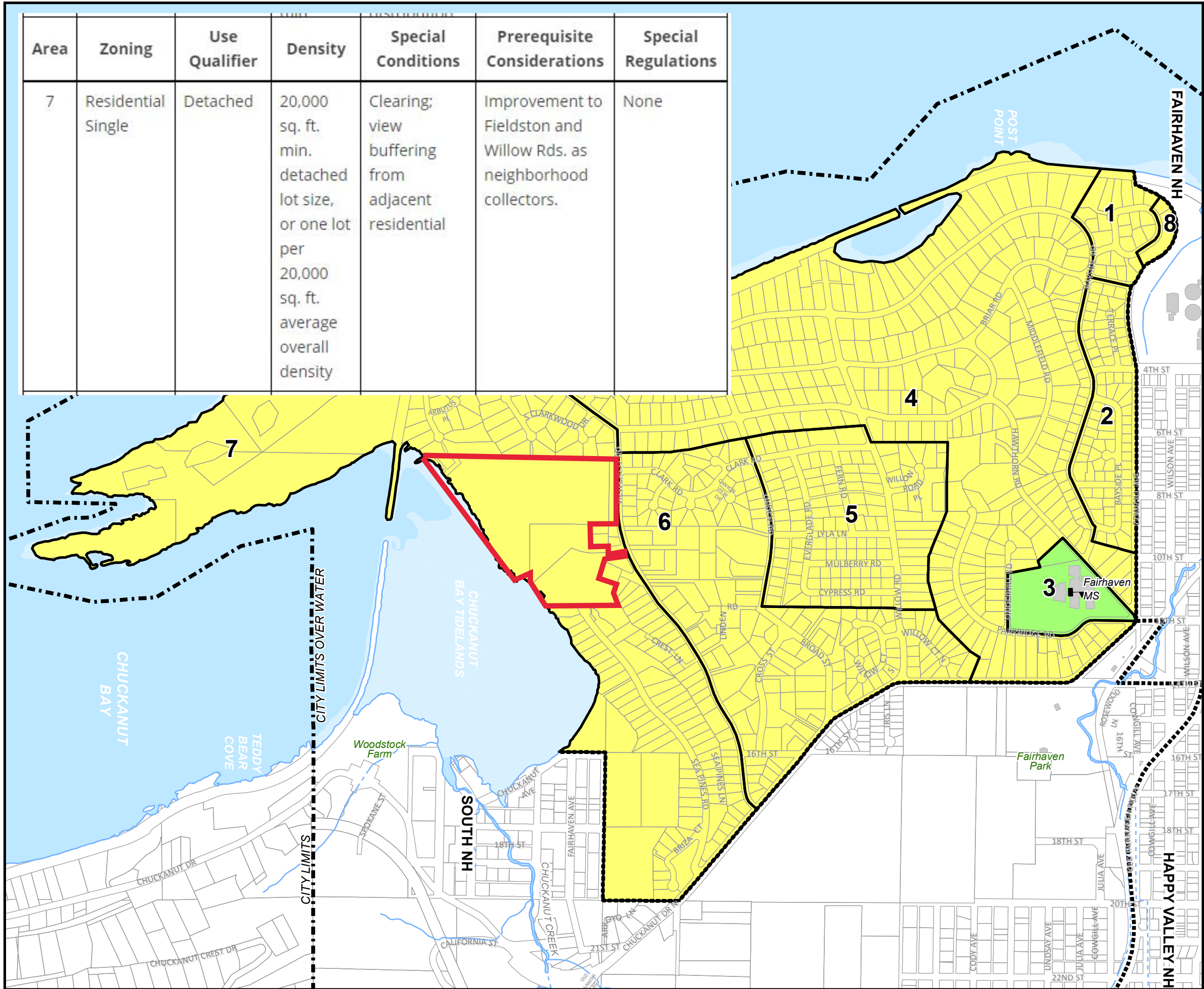
Printed: 10/23/2019 3:05:28 PM



THIS MAP IS NOT TO BE USED FOR NAVIGATION

The City of Bellingham has compiled this information for its own use and is not responsible for any use of this information by others. The information found herein is provided simply as a courtesy to the public and is not intended for any third party use in any official, professional or other authoritative capacity. Persons using this information do so at their own risk and by such use agree to defend, indemnify and hold harmless the City of Bellingham as to any claims, damages, liability, losses or suits arising out of such use. Contact the Whatcom County Assessors office (360-778-5050) for the most up to date parcel information.

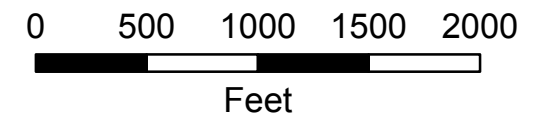
Area	Zoning	Use Qualifier	Density	Special Conditions	Prerequisite Considerations	Special Regulations
7	Residential Single	Detached	20,000 sq. ft. min. detached lot size, or one lot per 20,000 sq. ft. average overall density	Clearing; view buffering from adjacent residential	Improvement to Fieldston and Willow Rds. as neighborhood collectors.	None



EDGEMOOR NEIGHBORHOOD ZONING

AREA	ZONING DESIGNATION*
1	Residential Single
2	Residential Single
3	Public, Recreation/School
4	Residential Single
5	Residential Single
6	Residential Single
7	Residential Single
8	Residential Single

*SEE BELLINGHAM MUNICIPAL CODE TITLE 20 TABLE OF ZONING REGULATIONS FOR MODIFICATIONS IN THE LIST OF PERMITTED USES AND OTHER SPECIAL PROVISIONS FOR EACH NUMBERED AREA



City of Bellingham
Planning Department
2011