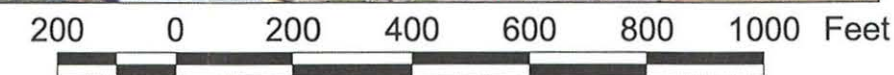


Data Sources: Nooksack Salmon Enhancement Association; City of Bellingham

Lambert Conformal Conic
Washington State Plane North
North American Datum 1927

This figure is for informational purposes only. It is intended to assist in the identification of the features discussed in a related document. Data were compiled from sources as listed in this figure. The data sources do not guarantee these data are accurate or complete. There may have been updates to the data since the publication of this figure. This figure is a copy of a master document. The master hard copy is stored by GeoEngineers, Inc. and will serve as the official document of record.

The locations of all features shown are approximate.



Existing Conditions (Upstream Reaches)

FIGURE # 2a

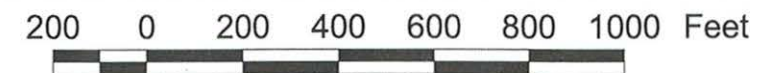


Data Sources: Nooksack Salmon Enhancement Association; City of Bellingham

Lambert Conformal Conic
Washington State Plane North
North American Datum 1927

This figure is for informational purposes only. It is intended to assist in the identification of the features discussed in a related document. Data were compiled from sources as listed in this figure. The data sources do not guarantee these data are accurate or complete. There may have been updates to the data since the publication of this figure. This figure is a copy of a master document. The master hard copy is stored by GeoEngineers, Inc. and will serve as the official document of record.

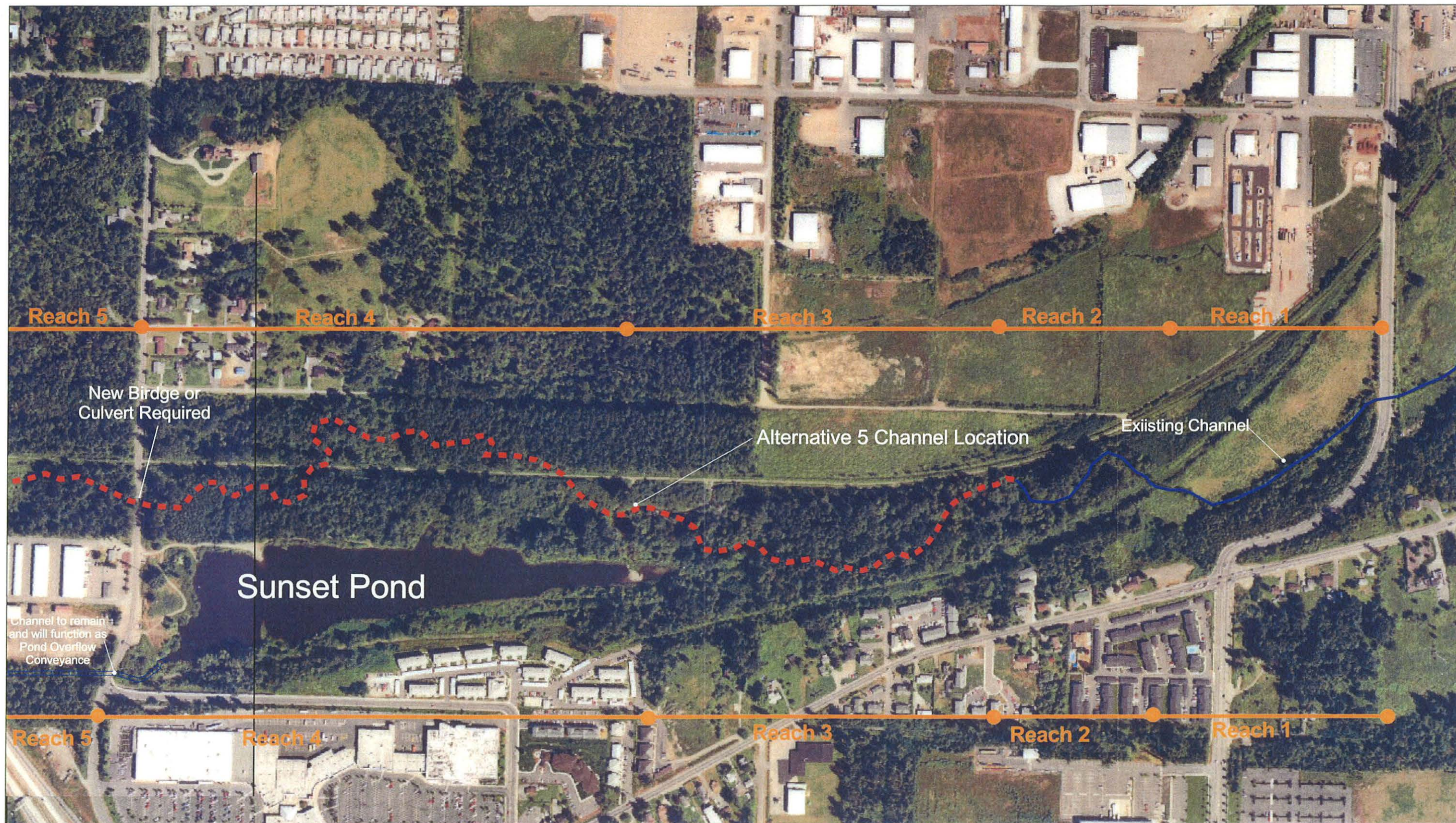
The locations of all features shown are approximate.



GeoEngineers

Existing Conditions (Downstream Reaches)

FIGURE # 2b



Data Sources: Nooksack Salmon Enhancement Association; City of Bellingham

Lambert Conformal Conic
Washington State Plane North
North American Datum 1927

This figure is for informational purposes only. It is intended to assist in the identification of the features discussed in a related document. Data were compiled from sources as listed in this figure. The data sources do not guarantee these data are accurate or complete. There may have been updates to the data since the publication of this figure. This figure is a copy of a master document. The master hard copy is stored by GeoEngineers, Inc. and will serve as the official document of record.

The locations of all features shown are approximate.



200 0 200 400 600 800 1000 Feet

GeoEngineers

Alternative 5 (Upstream Reaches)

FIGURE # 6a