

Locust Beach Public Meeting

BELLINGHAM



October 7, 2015

Gina Gobo Austin, Project Engineer
City of Bellingham Parks and Recreation
Design and Development Division



City of
Bellingham

Overview

- Background
- Greenway connections
- Property ownership
- Work completed
- Trailhead design
- Park name
- Next steps
- Open discussion

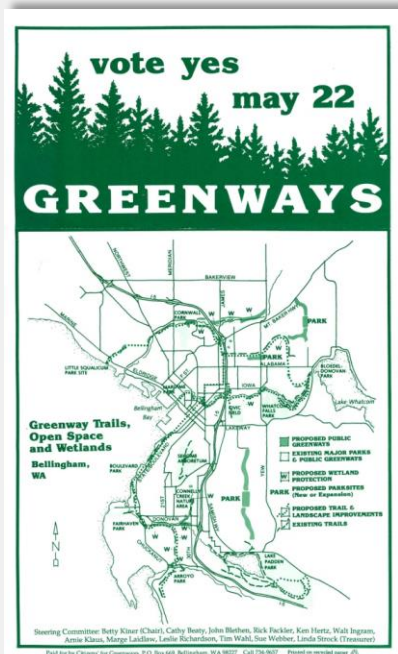


Background – Why This Site?

- Public shoreline access
- Public Plans:
 - City's planned Urban Growth Area
 - City's long term planning documents



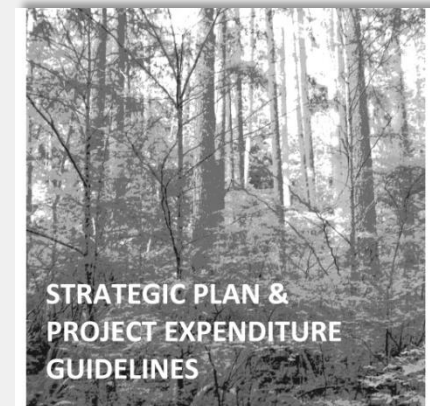
3 popular Greenway levies have provided funding for shoreline access at & around Locust



1990 Greenway Levy



1997 Beyond Greenway Levy



for Greenway Program
Land Acquisitions
October 2011 Update

Prepared by

City of Bellingham Parks & Recreation Department and Greenway
Advisory Committee for the Bellingham City Council
City of Bellingham, Washington

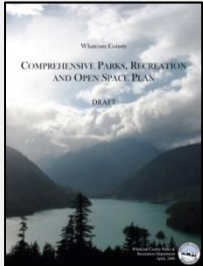
2006 Greenway III Levy

2003-5 BELLINGHAM WATERFRONT FUTURES GROUP

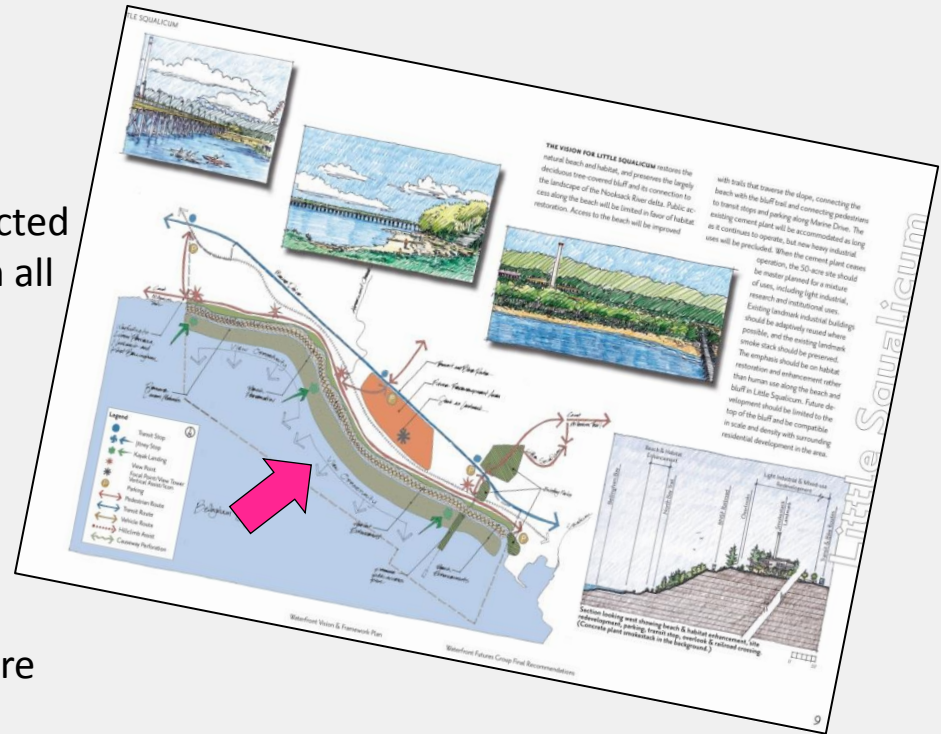


- 2 year citizen-based process
- City Council Res. 2005-04 directed staff to include components in all plan updates
- Access to Locust from east

2007 WHATCOM COUNTY PARKS



- Locust Beach state tidelands are recreational opportunity
- Need for over 2 miles of new marine beach access



Published Plans & Priorities

2008 CITY of BELLINGHAM PARKS



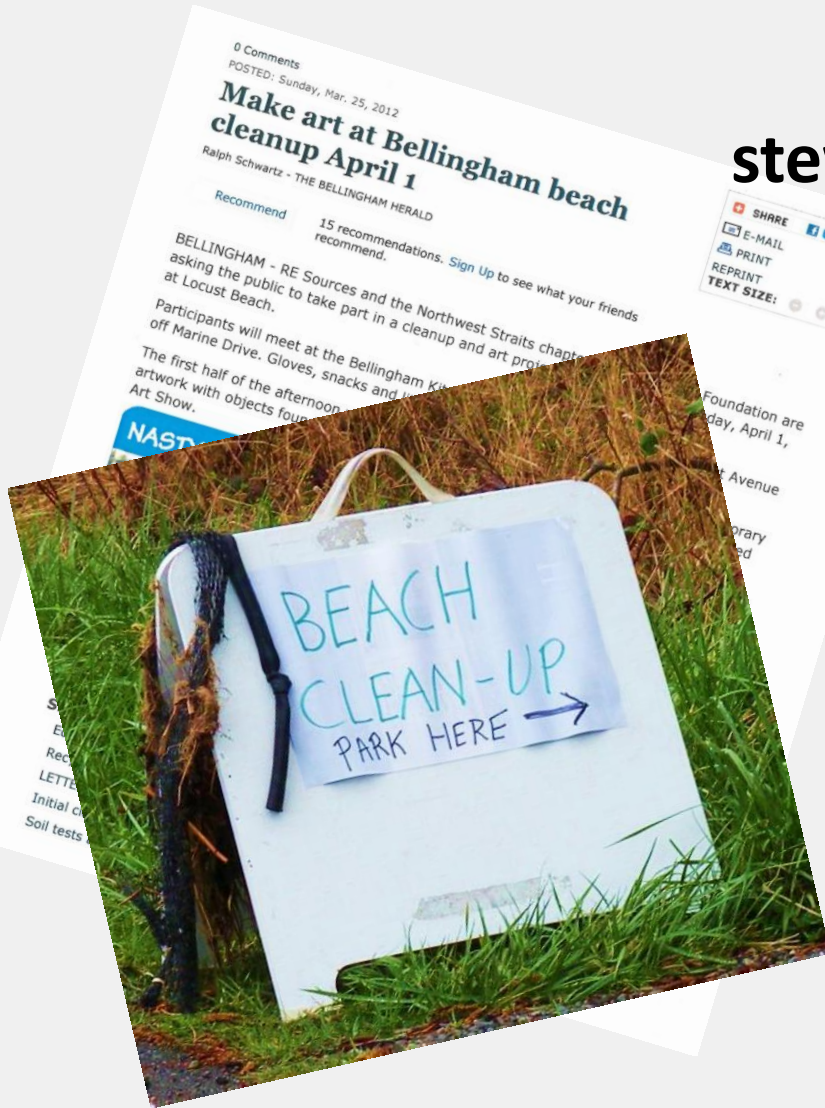
- “Greenway anchor” at Locust
- “North Bay Beachwalk” to Locust
- “Waterfront integration”

Support for public use & stewardship at Locust began with private efforts

- Chartwell Estates Condominium
- ReSources Inc
- Whatcom County Marine Resources Com
- North Sound Kiteboarding Assn
- North Straits Surfriders

Recent outreach & support generation by Bellingham Parks has included meetings with all these parties & preparations to engage other stake-holders

Locust Beach clean-ups & special events have been web-promoted for years



NORTH SOUND KITEBOARDING ASSOCIATION
2875 ROEDER AVE #10
BELLINGHAM, WA 98225
360-752-2614

April 12, 2012

To Whom It May Concern:

To Whom It May Concern:

The North Sound Kiteboarding Association (NSKA) enthusiastically supports the expansion of public beach and tideland access at Whirlwind Beach on Bellingham Bay. Without this purchase there is no legal way for the public to reach state tidelands. Without this purchase the city would be forced to take steps to promote and improve the area and its management at a much greater cost. Without this purchase the city would be forced to take steps to protect private property rights and confusion over shoreline property.

Sincerely,
[Signature]
[Name]
[Address]
[City, State, Zip]
[Phone Number]
[Email Address]

NSKA is a year-round organization that serves the public and the board of safety organization in the North Pacific local marine and active members.

NSKA has public n activities users.

NSKA up a acco Nor

15

April 11, 2012

To Whom it May Concern:

The Surfrider Foundation enthusiastically supports public access at Whirlwind Beach on Belle Isle. The foundation is concerned about the public's ability to reach state tide lands in the area and its management. There is also confusion over shoreline property.

Surfrider hosts many beach clean-up participants from the surrounding area. Members bring their families and friends. Members of the public will be able to enjoy the unique geography that allows them to recreate on the beach and nearshore. Walkers, picnickers, waders, bird watch-

Since large groups of people often recreate in warmer months, Surfrider has added this sixth water quality site in Bellingham Bay, to that Ecology's BEACH Program will be able to testing program in partnership locally with Su Health, but currently cannot due to limited pu by the addition of the Pazaski property, it may programs that would be able to ensure the pu recreationists at Whirlwind.

With the purchase of the Pazaski property there is public pride and care.

We are pleased to support an important project of gre

Sincerely,
Elena F. Hines

Eleanor Hines
Chapter Chair
Norwest Straits Chapter
Surfrider Foundation
215-287-0043
neh@surfrider.org
P.O. Box 2979
Bellingham, WA 98227

The Surfrider Foundation is a 501(c)(3) nonprofit environmental organization dedicated to protecting oceans, waves, and beaches through conservation, activism, research, and education.

www.surfider.org



SURFRIDER



2309 Meridian Street
Bellingham, WA 98225

Ph. (360) 733-8307
Fax (360) 715-8434

TO: Parties Interested in Winthrop
FROM: Crina Hoyer, Interim Executive Director,
RE Sources for Sustainable Communities
DATE: April 23, 2012

DATE: 7/1/78
To Whom it May Concern:

DATE: RE SUB April 23, 2012

To Whom It May Concern:

I am pleased to write in support of the City of Bellingham's purchase of the 14-acre "Pazaski Bluffs" property on Bellingham Bay. The Pazaski property has been a legal inholding and barrier tract lying between the State's public tidelands and the tideland beach eased to the public by the Chartwell Estate Condominium off the end of Locust Avenue.

For Sustainable Communities is actively involved with Beaches. Our monthly sponsor work

My organization, RE Sources for Sustainable Beaches, is actively involved with stewardship along Whirlwind and Cliffside Beaches. Our North Sound Baykeeper program works with community groups and volunteers to regularly sponsor work days along these beaches throughout the year. We have also worked with the Department of Ecology to monitor and clean-up the beaches during storm events.

program works with the Washington State Department of Ecology to coordinate beach clean-ups at these beaches during winter storms.

With public acquisition of the beach area, the City will be able to manage the areas in the Whirlwind bight area will be able to manage the areas under its purview and to promote public use of the beach. The City also applauds the City's efforts to unify public ownership and to address public use of the informational, management and regulatory ownership and to promote public use of the beach. The City-State memorandum of understanding between the City and the State suggests a City-State memorandum of understanding between the City and the State forward to supporting formation of a Whirlwind Beach stakeholders group to help forward to local resources and encourage responsible and valued public use.

There can now be clear management and messaging to guide protection of tidal and roosting areas and beaches, and, perhaps most importantly, to protect the area's wildlife and encourage responsible use of the area. The Bellingham Bay area is a unique site, which offers the only significant public beach on Bellingham Bay.

leased to support this project, on behalf of the Bellingham Bay and central Salish Sea region.

RE Sources is pleased to support
and the residents and fisheries of the central Salton

Sincerely,

 Chris Hoyer
 Interim Executive Director

www.tc-sources.org

Made from 100% post consumer, secondarily chlorine



Whatcom County Marine Resources Committee
322 N. Commercial St, Suite 110
Bellingham, WA 98225
Phone: 360-676-6876
Fax: 360-738-2468
www.mrc.whatcomcounty.org

May 17, 2012

TO:
Washington State Recreation & Conservation Office
Washington Department of Natural Resources, Aquatic Lands Division

CARE OF:
Bellingham Parks and Recreation Department

RE: Whirlwind Beach Aquatic Land Assembly Project, RCO # 12-1545

The Whatcom County Marine Resources Committee (MRC) enthusiastically endorses the City of Bellingham's acquisition of 13 nearshore acres at Whirlwind Beach, and its request for retroactive matching funds from the Aquatic Lands Enhancement Account (ALEA). This purchase fills a gap in the public lands at Whirlwind Beach, creating a connection between the existing State-owned tidelands and the public Chartwell tidelands and trail, which were dedicated for public access in 1999.

Also in 1999, the MRC was established by the Whatcom County Council to protect and enhance local marine resources and contribute to the protection of the marine environment of the Northwest Straits. Members of the Whatcom MRC represent conservation, business, recreation, and scientific perspectives, as well as city, county, and tribal government. We are one of seven MRCs established in the Northwest Straits region as a part of the federally established Northwest Straits Marine Conservation Initiative.

The MRC considers public access to our marine resources of paramount importance as public use and enjoyment encourages stewardship and builds support for protection. Inadequate management, access, and infrastructure at Whirlwind Beach have led to problems including illegal parking, illicit activity, and garbage dumping. As public use continues to increase, these issues could worsen. The MRC welcomes the City's efforts in support of unified management of the Whirlwind area to improve environmental conditions, promote pride and stewardship and to provide and maintain critical facilities for appropriate levels and types of public use. Improved safety, access and stewardship messaging at a clear, public setting will also enable the MRC to expand restoration and outreach efforts at and near Whirlwind Beach.

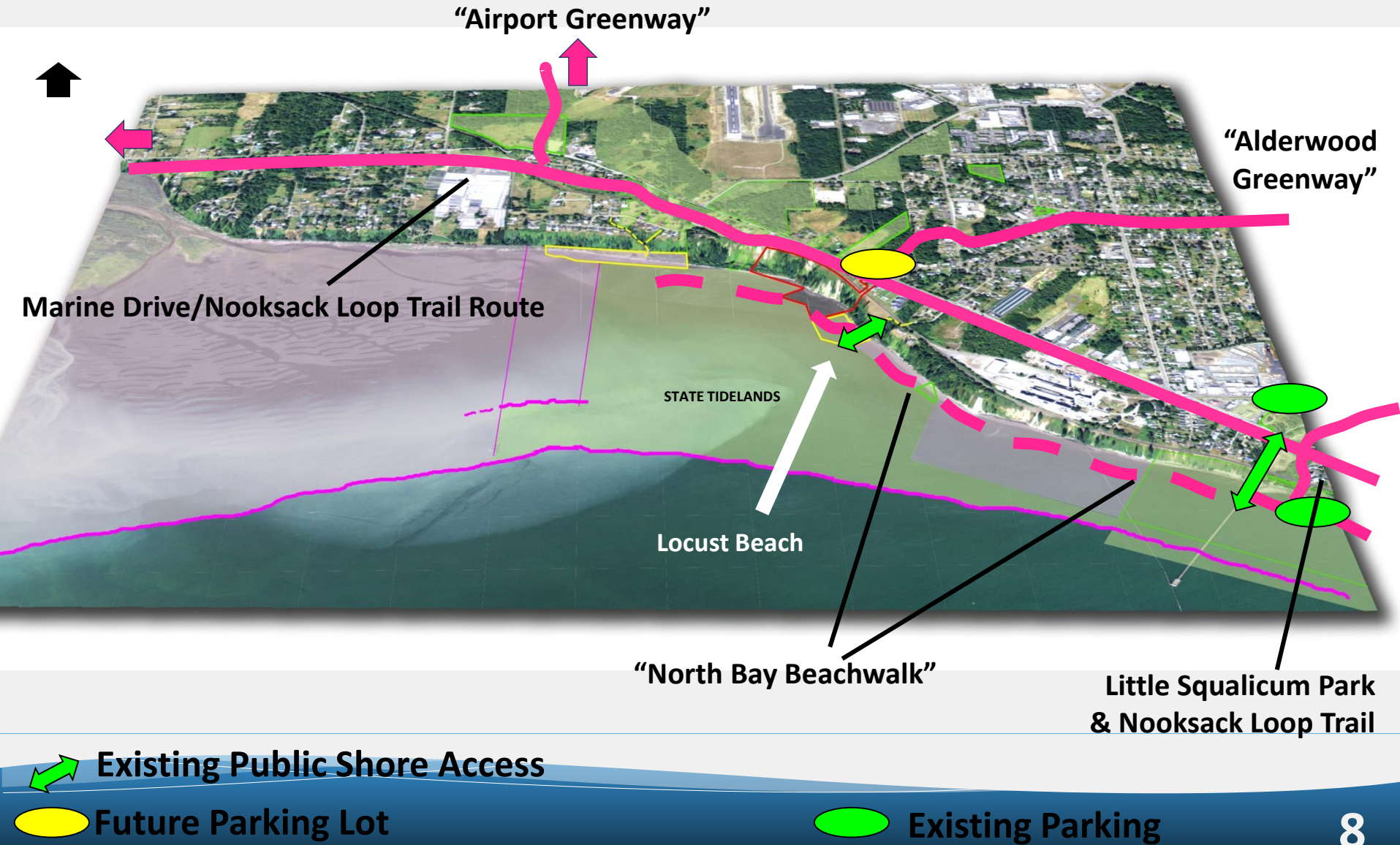
We look forward to working with the City of Bellingham to provide input and support in the development of this area that will occur with the help of ALEA funding.

Sincerely,

Wendy Steffensen, Whatcom MRC Chair

- Re-Sources of Whatcom County
 - North Sound Kite Boarding Association
 - Surfrider Foundation, NW Straits Chapter
- Whatcom County Marine Resources Committee

Greenway Connections & Parking

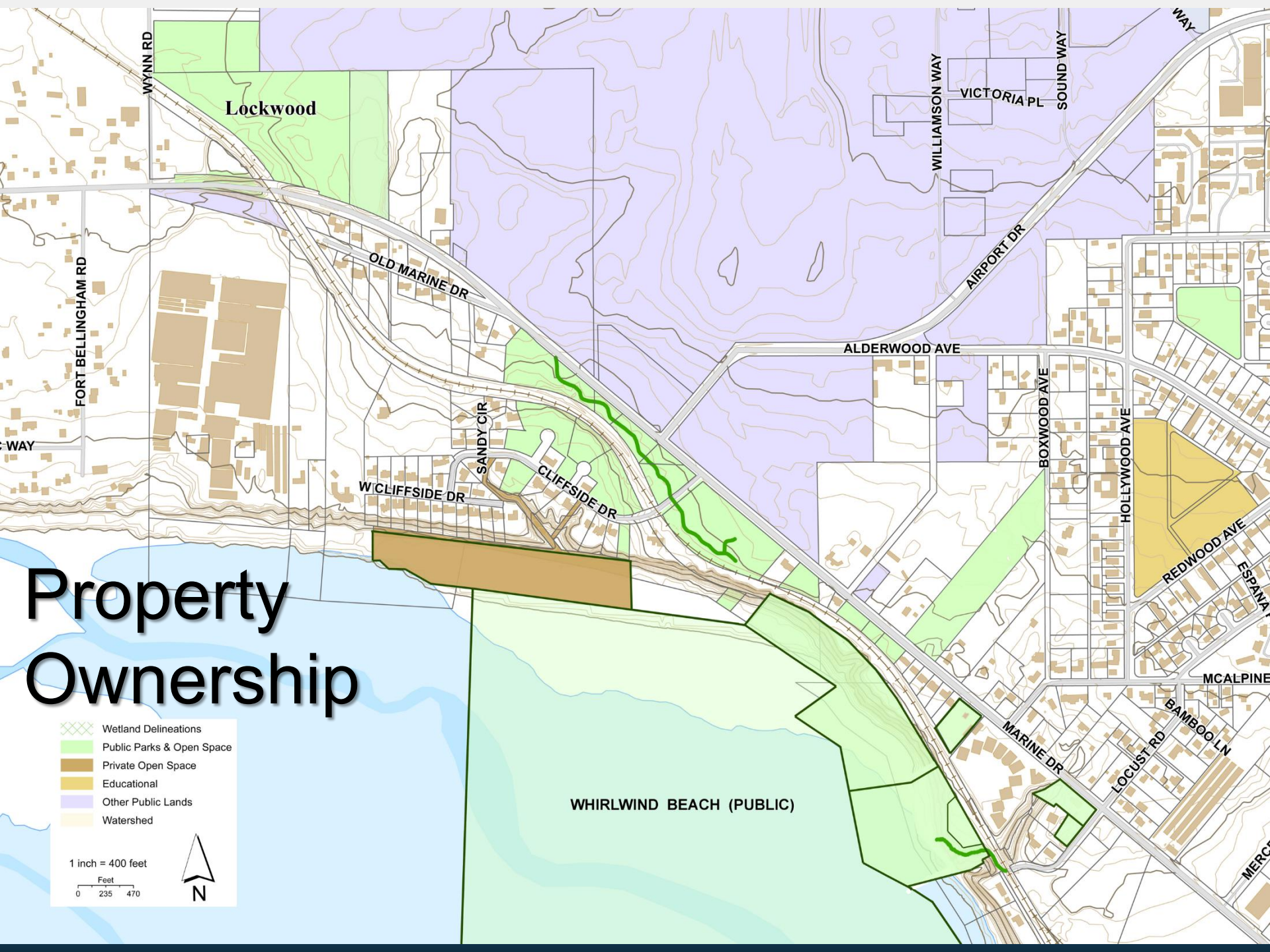


Property Ownership

- Wetland Delineations
- Public Parks & Open Space
- Private Open Space
- Educational
- Other Public Lands
- Watershed

1 inch = 400 feet

Feet
0 235 470



STATE TIDELANDS

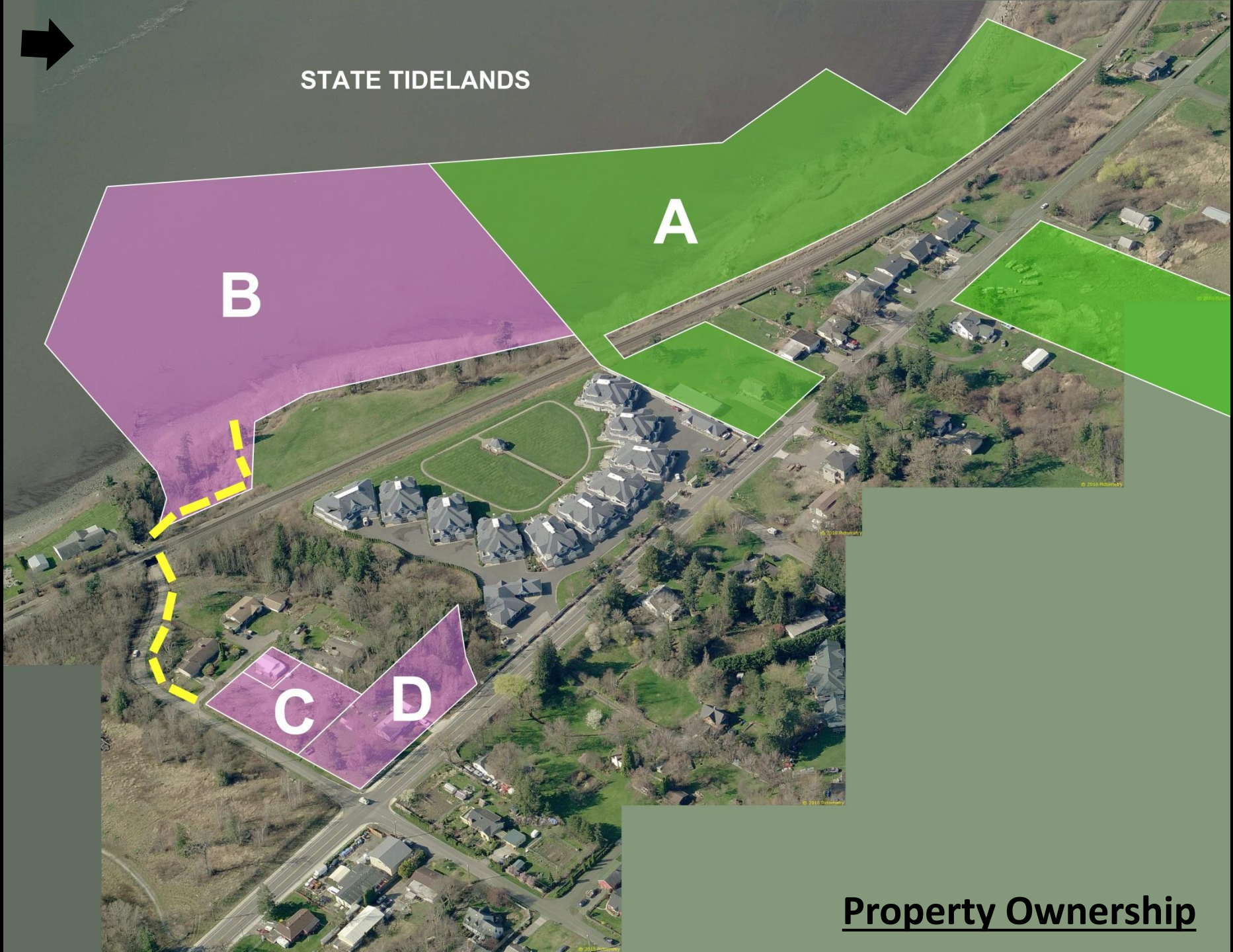
B

A

C

D

Property Ownership



Work Completed:

- Received grant funds
- Hired consultant
- Met with DNR, WDFW
- Met with County staff, County Law Enforcement & Fire Departments
- City staff tour & design charrette
- Adjoining property owner meetings
- Preliminary design concepts
- Site studies, asbestos removal, building demolition

Trailhead Design

- \$550,000 budget
- Design this year
- Construct next year
- Site amenities:
 - Paved parking
 - Restroom
 - Trash receptacles
 - Signs
 - Security lighting



Way finding Sign



Park Sign



Trailhead Sign



Trash Receptacle

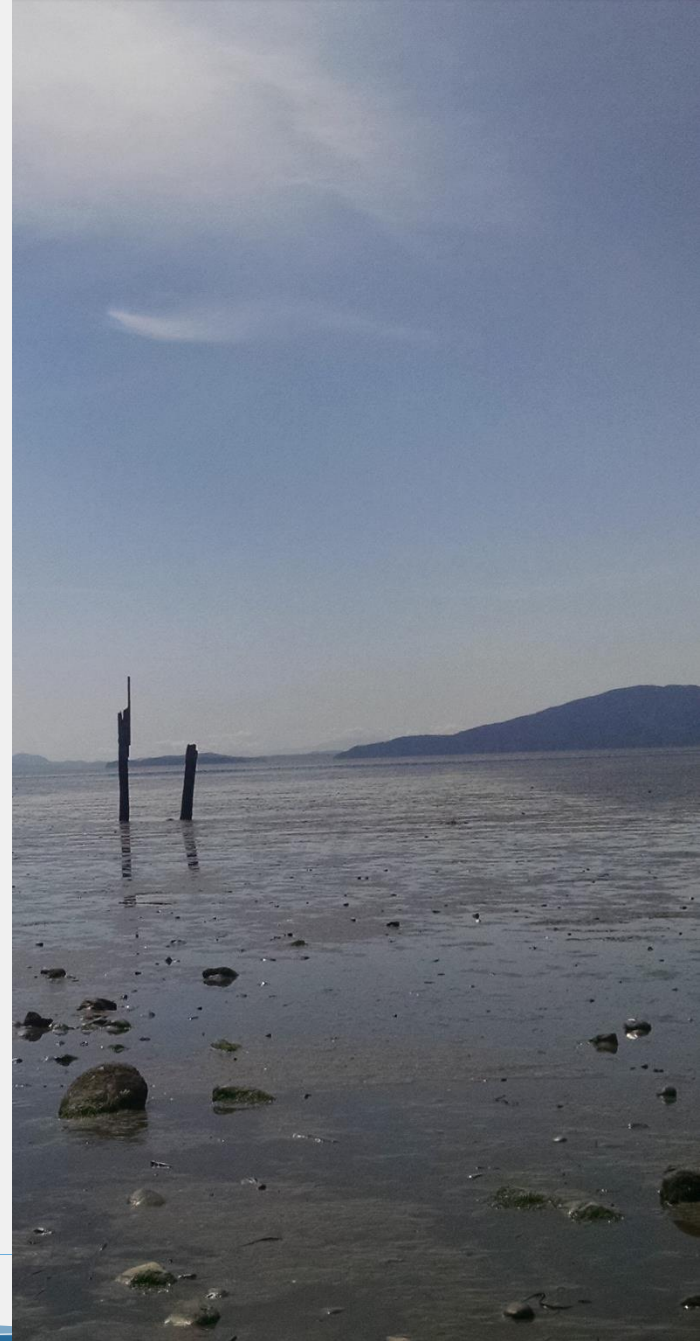


Restroom Building



Preliminary Design Overview

- Parking
- Landscaping
- Trash/dumpster
- Pet waste station
- Interpretive Sign
- Park Sign
- Bicycle parking
- Motorcycle parking
- Security Lighting
- Restroom



ALDERWOOD CREEK

SEC. 22
SEC. 23

APN 380223 025453

APN 380222 560484

APN 380223 022440
#3199 LOCUST AVE.

HOLMES

NEHER
#877 MARINE DRIVE

LOCUST AVE. (50'
WIDE RIGHT-OF-WAY)

MARINE DR.

ALDERWOOD CREEK



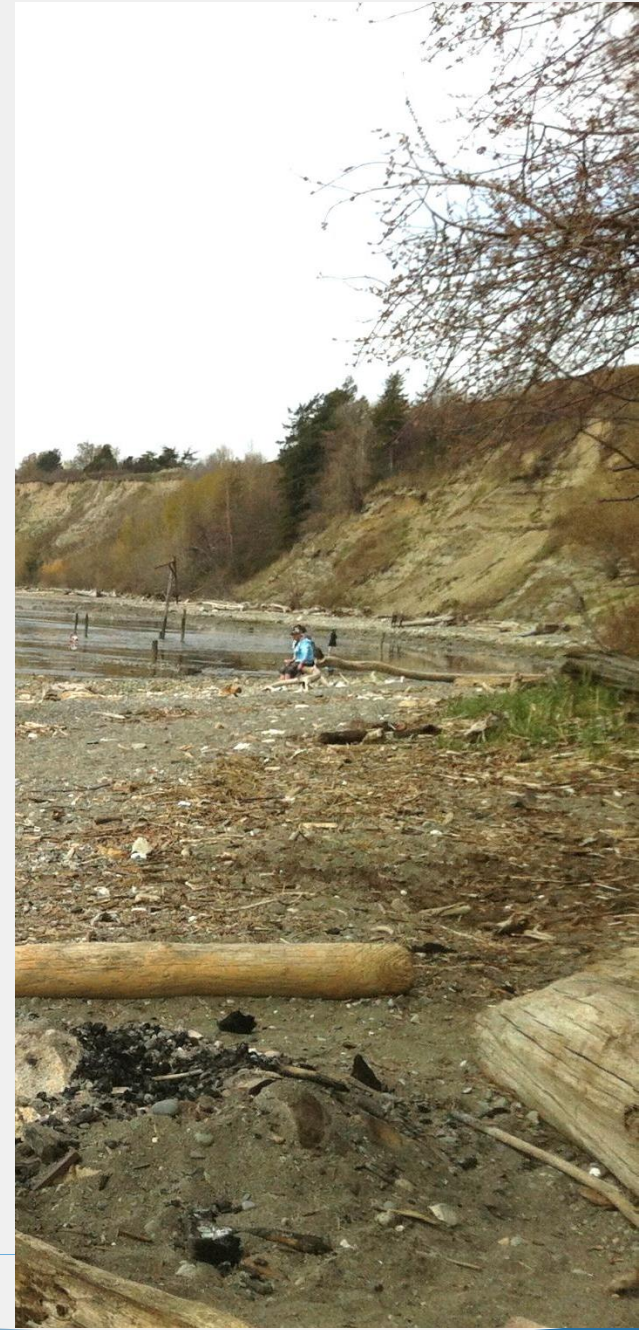
SEC. 22
SEC. 23

APN 380222 560484



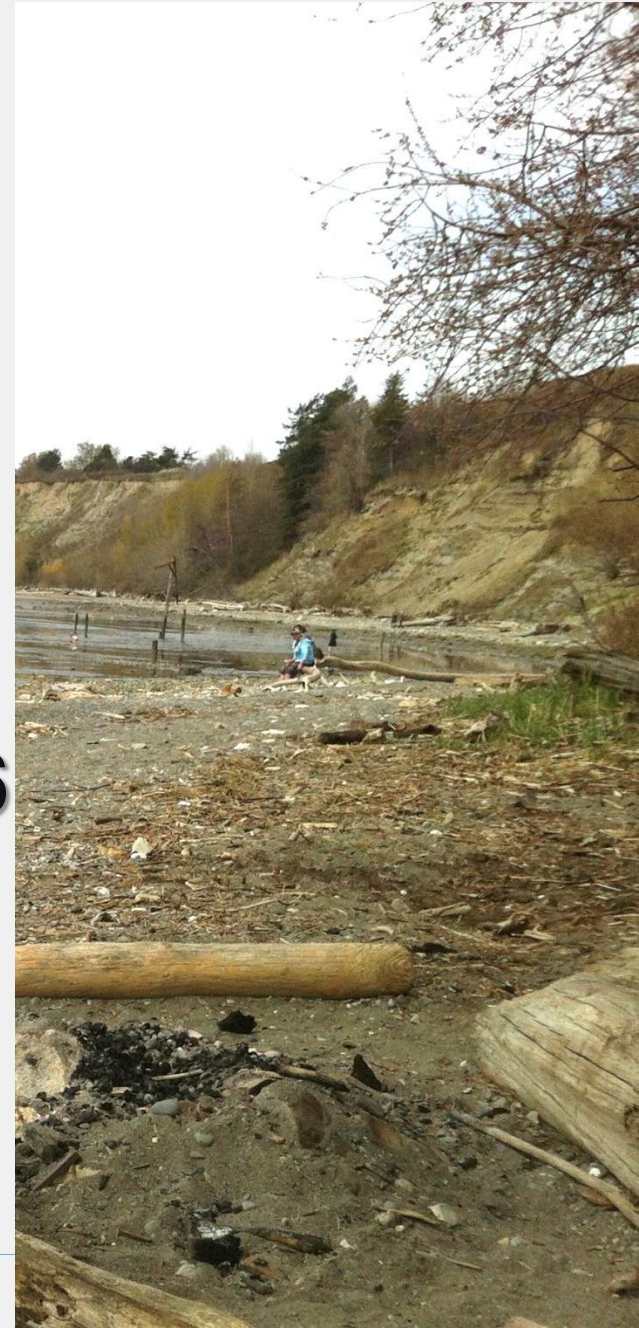
Park Name

- Locust Beach Trailhead?
- Others?



Next steps

- Complete Design - 2015
- Apply for Permits - 2015
- Bid - Spring 2016
- Construct - Summer 2016
- Continue coordination with County staff & neighborhood



Open discussion/Group Comments:

- Build beach access at property 'A' (925 Marine Drive) for Tsunami escape route
- Don't plan deciduous trees, they are messy. Evergreens are better
- Driveway on Locust is an existing access. Keep the driveway as the main parking lot entrance.
- Consider a "pit" toilet down at the beach. There is human feces down at the beach.
- Consider a portable toilet in the parking lot as an interim solution
- Does the city have access to water service?
- Install an outdoor shower at the new restroom building
- Don't build the restroom. It will be a nuisance of drug and illicit activity
- Are there any plans to improve the intersection at Marine and Locust? Add a stop sign?
- Building the restroom is more important than paving and landscaping. Build the restroom first. Consider a gravel parking area to save costs.
- Parking lot is overdeveloped. Use gravel. Parks doesn't keep up with their landscaping maintenance. Whatcom Creek looks horrible. Save money and build the restroom now. Trash and parties are an issue here. Residents have been doing a lot of the work to keep things clean.

Open discussion/Group Comments:

- Provide ATV access on the trail for the sheriff.
- Will trail be made accessible for all? Why have accessible parking for inaccessible trail?
- Install pet waste stations
- The more value and enjoyment that happens here, the better the area will get
- Get everyone involved in this effort. Get neighbors involved
- Will this development increase activity? City is developing property in the County and law enforcement is a big concern. With expanding the facility, there are issues. Laws aren't enforced now. People are speeding on Marine drive.
- People camp on property and no one is doing anything about it
- Improve the stairs and trail to the beach. City should take responsibility now even though you don't own the property.
- Consider education campaign and recruit beach stewards.
- Trail is becoming a liability with increased use.
- Student population may be bringing in trash and parties. Consider them in the process as neighbors to improve and raise awareness, get involved and do something good.
- Community groups are interested in trail building. City should utilize free help more often.

Open discussion/Group Comments:

- Set up volunteer stewardships with the city now
- Install a gate at the parking area. 90% of issues happen after dark.
- Install a fence at the ravine to deter illegal dumping. People have dumped couches, etc, down the ravine. It's too easy to access.
- Name of park should be "Locust Beach" this is what people reference
- Another name idea is "Nooksack Delta" to raise awareness of environment
- Clarify exactly what will be built next summer
- Sewer service is very important. It's a very critical issue of health and safety. We should be able to overcome paperwork issues with getting sewer approval
- Put a sign at the beach within the Locust ROW
- Plant an impermeable hedge along the private drive between the park and the neighbors
- Use gravel instead of pavement to save money
- Create a design that has a more residential feel to landscaping.
- Use curved landscape areas, not such straight and abrupt lines
- Will trail to beach close?
- Is Chartwell land private?
- Use permeable surfaces in the parking lot. Create softer surfaces
- Install bicycle parking.

Open discussion/Group Comments:

- Create a barrier between the pond and parking lot for children's safety.
- Create a more welcoming gathering area in the parking lot. Consider other paved surface treatments
- Install bike racks that are useable
- Consider solar cell lighting
- Use dimming lights with motion sensors
- Neighbors aren't too sure about parking lot lighting. Will we see lights outside our bedrooms?
- Implement smart technology here to detect vehicles and use. Detect movement, no cameras. Work with the sheriff on this.
- Install security cameras and have staff monitor them
- Create "beachy" theme for fencing using driftwood
- Consider an artist mural on the railroad over pass to deter graffiti
- Communicate with students. Get their involvement and investment in this area
- Don't built a "pit" toilet
- What is needed to build just a shower? Could we just have a water spigot with no sewer hookup?
- Consider building a playground at the parking lot

Locust Beach Public Meeting

BELLINGHAM



Presented by: Gina Gobo Austin, PE
Project Engineer, Parks and Recreation
Design and Development Division
(360) 778 – 7000 gaustin@cob.org



City of
Bellingham

