

Questions / Answers

- I assume that even though this is for a public entity, we need to account for sales tax coming out of the \$240k budget?

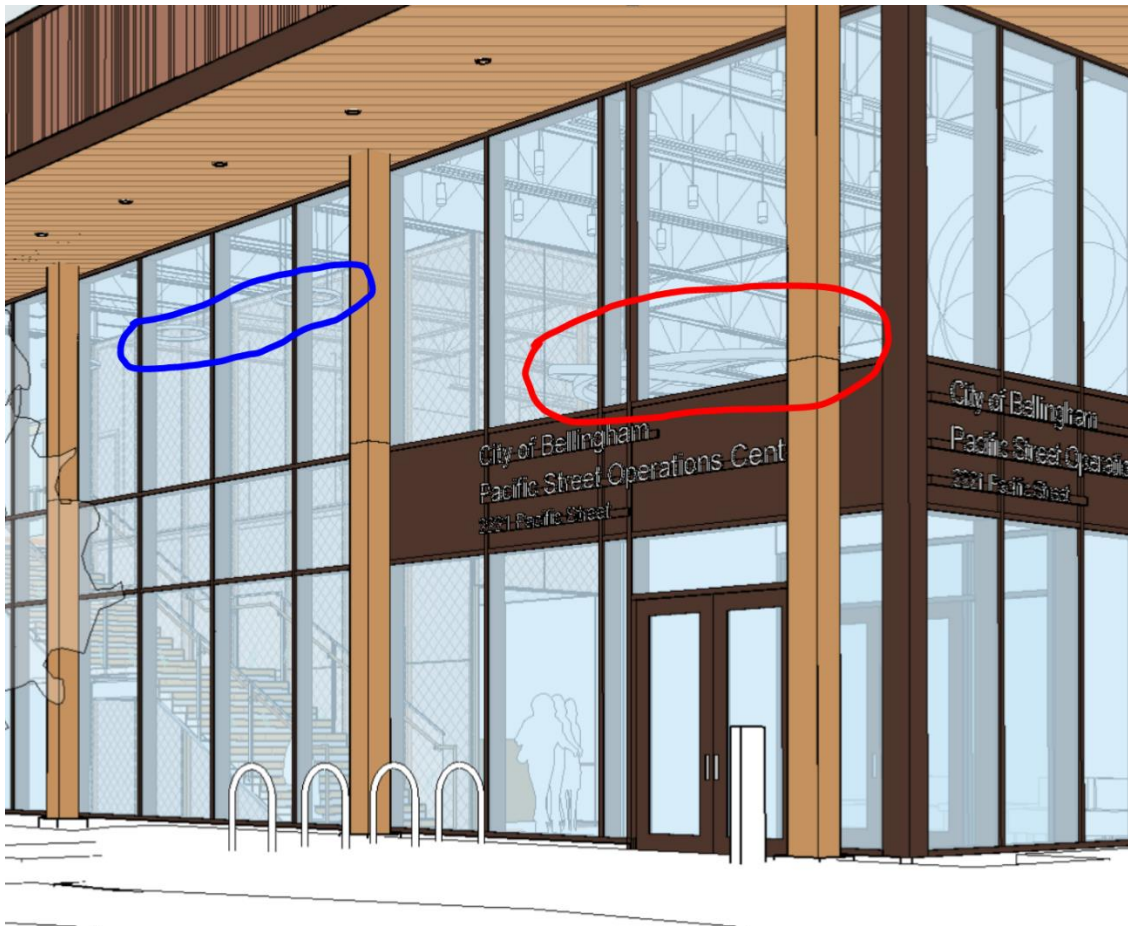
Yes, please check the current Washington State Sales Tax through the State's website

- Is there a minimum clearance that we need to maintain below the artwork? I usually maintain 9 ft, but let me know if it should be higher for some reason

9 Feet meets code

- Are the "Halo" lights over the stairs shown in the model the actual fixtures or just placeholders (circled in blue below)? If they are real, can they be moved or should we consider them fixed?

They are fixtures but the architect can work with the artist on placement. There are lighting requirements per the code

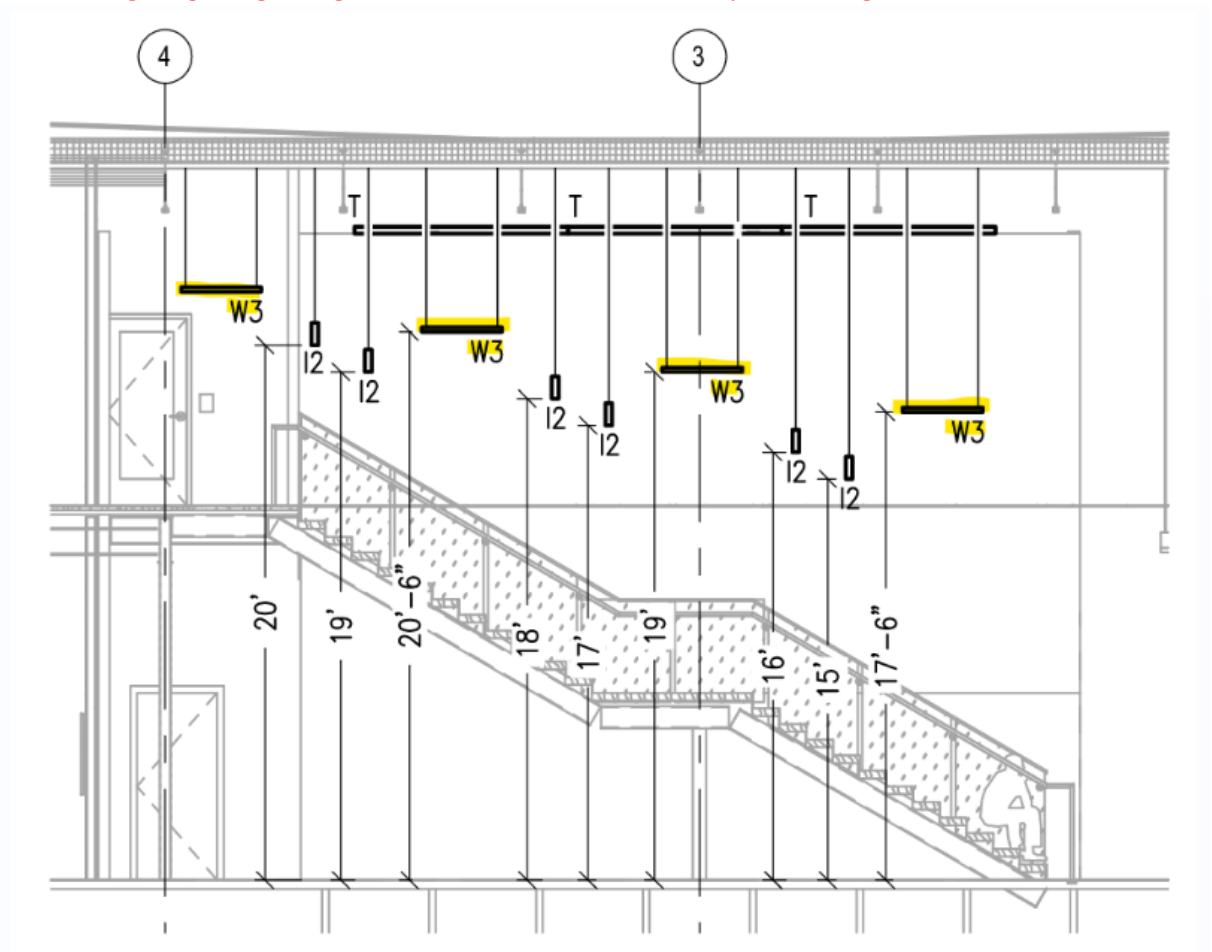


- The model has a big spiral-knot like chandelier in it - circled in red below. I assume that is just a placeholder and isn't in the project.

Yes this large chandelier is a placeholder

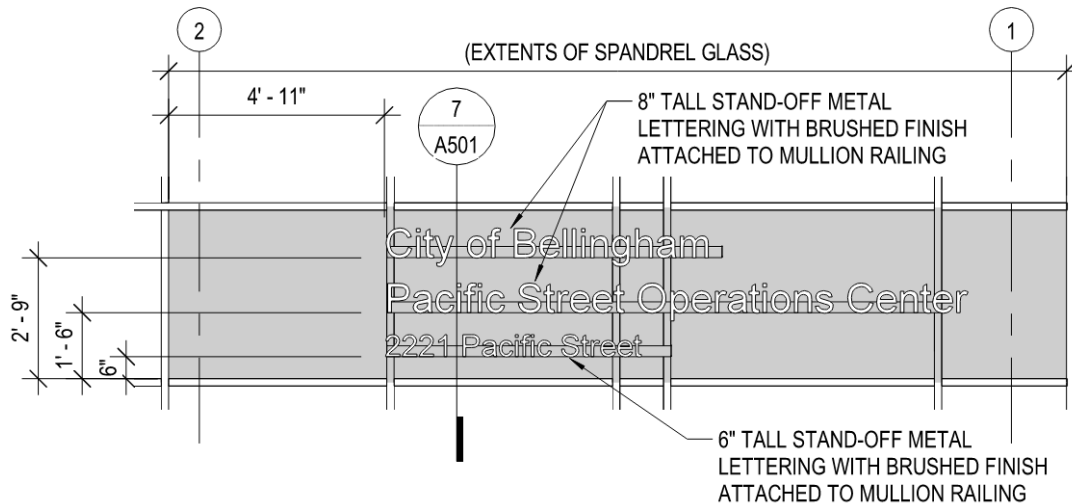
- The defined space for the hanging sculpture does not go into the space above the stairs. Would it be possible to propose a work that does go into the space above the stairs (as long as it is out of reach?)

Yes, they may drift over into this zone, with the one caveat that they need to work around the lighting in that area (the stair lighting is needed for code, we can't delete). See below. I will email our lighting designer right now to see if there is flexibility in the heights...



- What is the design of the sign above the door? i.e. material and color?

Here is the address sign, with materials called out. Brushed metal finish/color:



4 East Elevation - Building Sign

1/4" = 1'-0" 0 1' 2' 4' 8'

- If we choose to create an artwork for the wall adjacent to the stairs, are there any specific requirements? Does it need to act as a physical barrier for the second floor

Yes, it does need to act as a physical barrier to L2. Also, there is currently a 4" gap between the face of the HSS and the stairs (see below)... the artist can work in that gap as much as they want, but that's all they have.... The gap gets any bigger and we start to bump into guardrail territory

- Does it need to let light through to the second floor?

That was our original thinking, giving employees more natural light in the open work area beyond. But it's not a strict "requirement".

- If we choose to create an artwork for the wall adjacent to the stairs, can we use the architect's mesh wall as support?

Yes

- Are the trees in front of the building located in the same place as they are in the revit file provided?

Those trees will not be there

- What is the goal of having more than one artwork in this space?

The goal isn't to have more than one artwork in the space however that is an option, the goal is to fill the spaces, primarily those areas visible from the exterior with artwork this could be one piece if planned properly