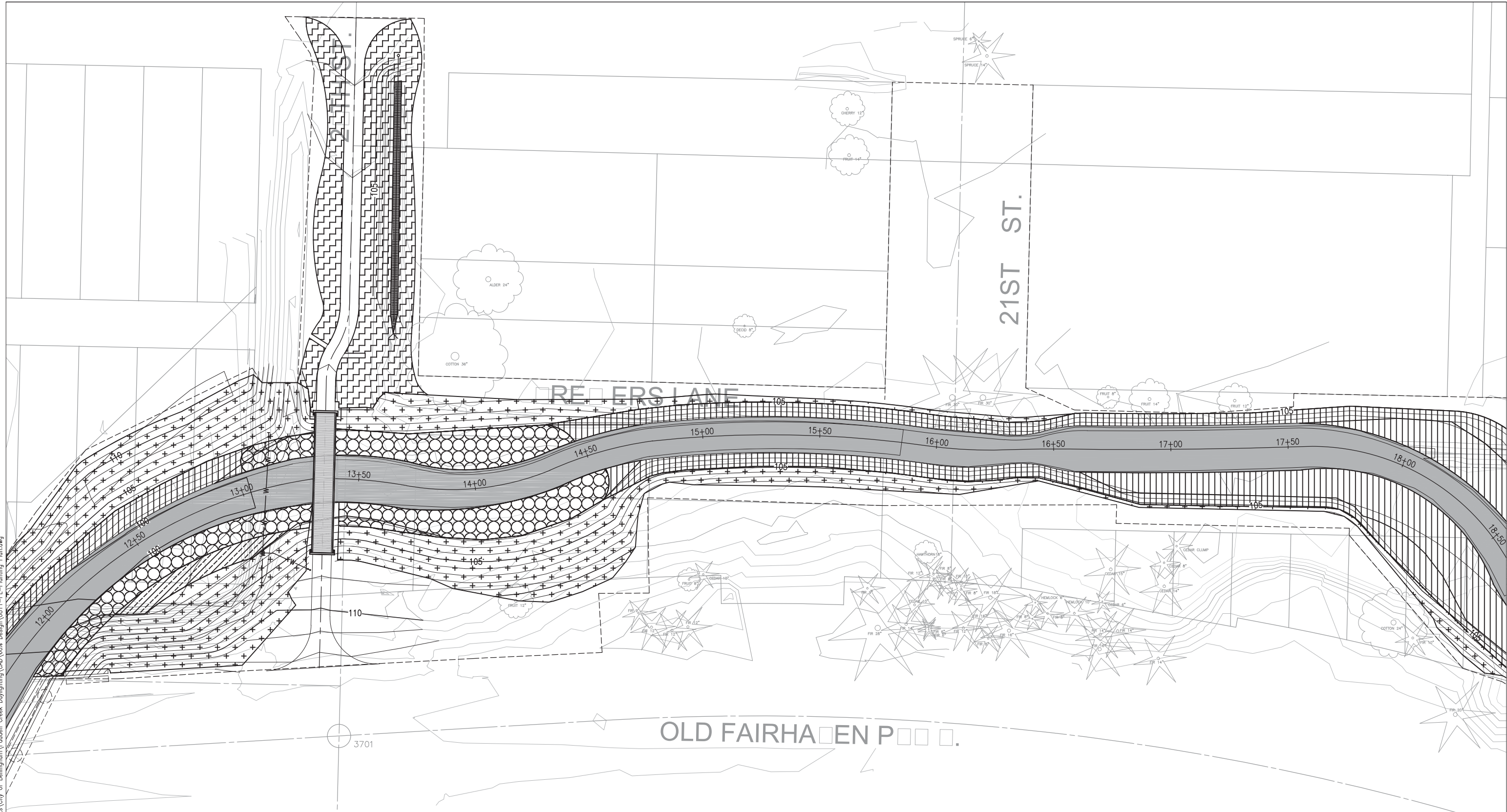


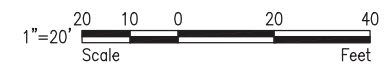
Dana Goffrey - 5/15/2013 9:59 AM - B:\Projects\City of Bellingham\Padden Creek Daylighting\CAD\60% Design\0811-PL-Planting Plan.dwg



LEGEND:

- | | | | | | |
|--|------------------------------------|--|---|--|---------------------------|
| | EMERGENT WETLAND PLANT COMMUNITY | | TREE AND SHRUB WETLAND PLANT COMMUNITY | | DAYLIGHTED STREAM CHANNEL |
| | LIVE STAKE WETLAND PLANT COMMUNITY | | RIPARIAN BUFFER PLANT COMMUNITY - LIVE STAKES & POLES | | PROJECT LIMITS |
| | SHRUB WETLAND PLANT COMMUNITY | | RIPARIAN BUFFER PLANT COMMUNITY - TREES & SHRUBS | | |
| | | | RIPARIAN TRAILSIDE PLANT COMMUNITY | | |

NOTE:
1. SEE PLANT SCHEDULE, SHEET L-1 FOR PLANT CANDIDATE SPECIES BY PLANT COMMUNITY.



4			
3			
2			
1			
Date	No	Revision	By

PROJECT ENGINEER	GMS	DIRECTOR OF PUBLIC WORKS	T.A.C.
DESIGNED/DRAWN	DJG	CITY ENGINEER	R.A.R.
INSPECTOR		OPERATIONS ENGINEER	

CITY OF BELLINGHAM, WASHINGTON
PUBLIC WORKS DEPARTMENT
ENGINEERING DIVISION

ANCHOR OEA
1605 Cornwell Ave
Bellingham, WA 98225
(360) 733-4311
www.anchoroea.com

DATUM	NAVD 88
Job. No.	-
Date	-
Field Bk.	-

PADDEN CREEK DAYLIGHTING PROJECT
PLANTING PLAN (3 OF 4)

SHEET	35	OF	38
DRAWING	L4		

CONTACT PERSON: PROJECT ENGINEER AT 360-778-7900