



Recycling & Waste Collection Services  
Jobsite & Event Services  
Mobile Data Shredding  
*Commercial • Residential*

Date: 9-16-22

To: Jack Bloss  
AVT Consulting  
1708 F St.  
Bellingham, WA 98225  
Office: [360-527-9445](tel:360-527-9445)  
[www.avtplanning.com](http://www.avtplanning.com)

**Re: Squalicum Heights, Garbage/Recycling Enclosure**

Having reviewed your plans for meeting the requirements of WAC 51-50-009 (b) and City of Bellingham policies pursuant to the same, Sanitary Service Company authorizes use of standard residential curbside service as selected for the project above (see attached), subject to the following notes:

1. All containers placed for collection along either side of the main loop road, within 5' of the curb, away from trees and other objects.
2. No parking on main loop road at any time.

Contact me at 815-1098 (cell) or 734-3490 (voicemail) with any questions.  
Thanks for working with us on your design - it helps us provide your client with the best service at the lowest cost!

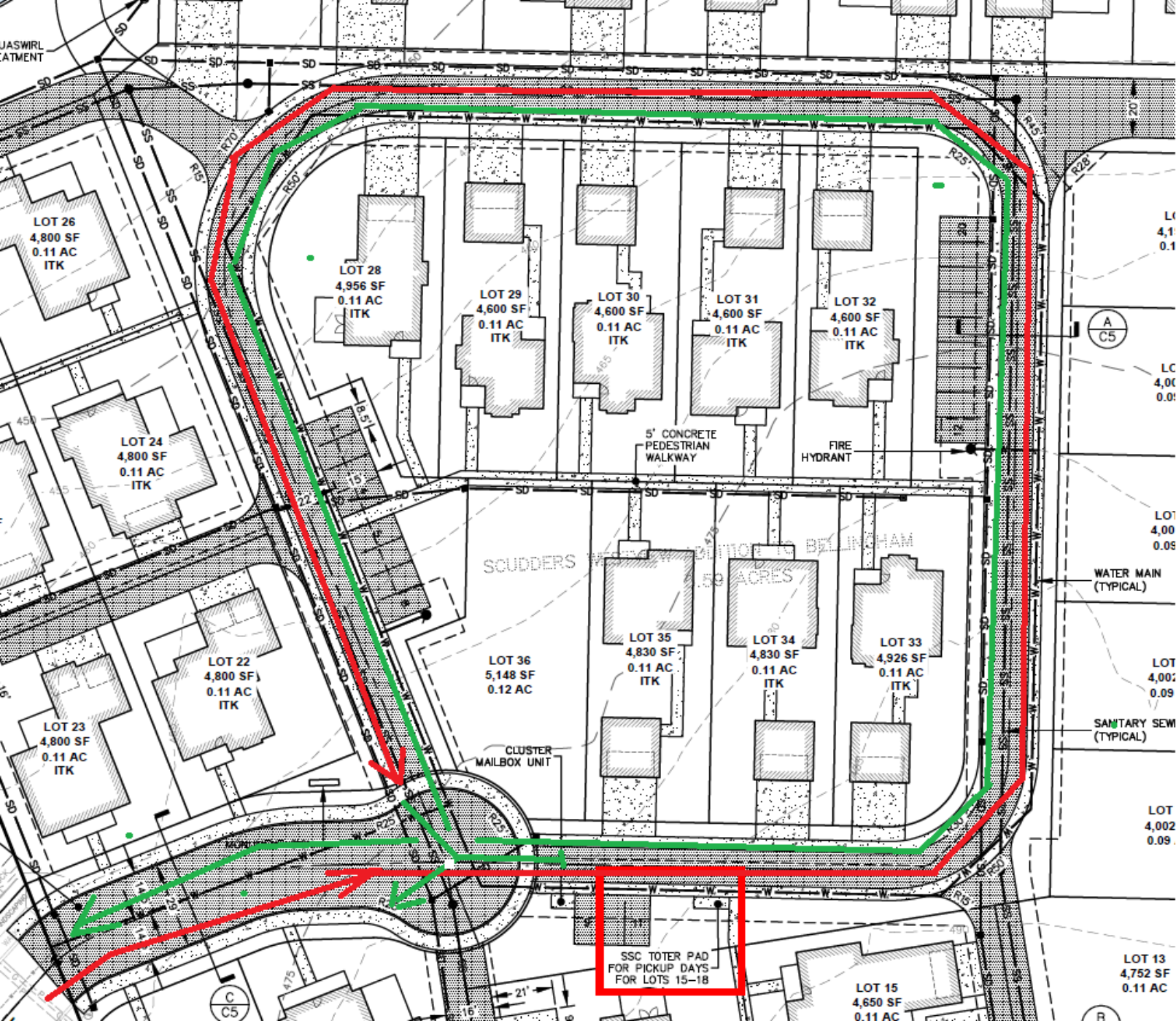
Sincerely,

Rodd Pemble  
Account Services

P.O. Box 1702 • 21 Bellwether Way, Suite 404, Bellingham, WA 98227  
(360) 734-3490 • Fax: (360) 671-0239 • 24-Hour Dispatch (360) 734-2051

[info@ssc-inc.com](mailto:info@ssc-inc.com) • [www.ssc-inc.com](http://www.ssc-inc.com)

*Serving Whatcom County since 1929 • Locally-owned and operated*



**Are the radii set up at the roundabout to allow our 30' inside/45' outside turn trucks to do a three-point turn around to finish the inner loop Toters going clockwise, then exit?**