

## Stormwater Pollution Prevention For Vehicle Washing and Detailing Businesses



# What is stormwater pollution?



# What's so important about stormwater?

**#1 source of water pollution in urban areas of  
Western Washington**





# Why is stormwater a problem?

- 75% of toxic chemicals entering Puget Sound come from roads, driveways, rooftops, yards and other developed land

Source: Department of Ecology



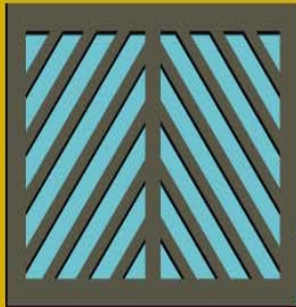


# Where does water go when it leaves your worksite?

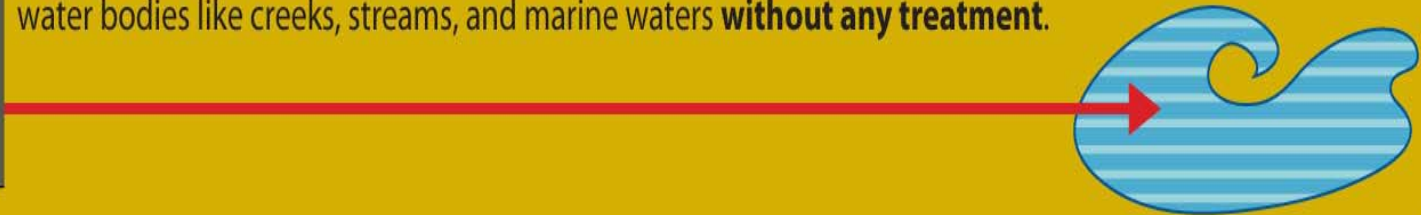


**WASTEWATER:** Indoor drains collect water from sinks, toilets, washing machines, and other sources.

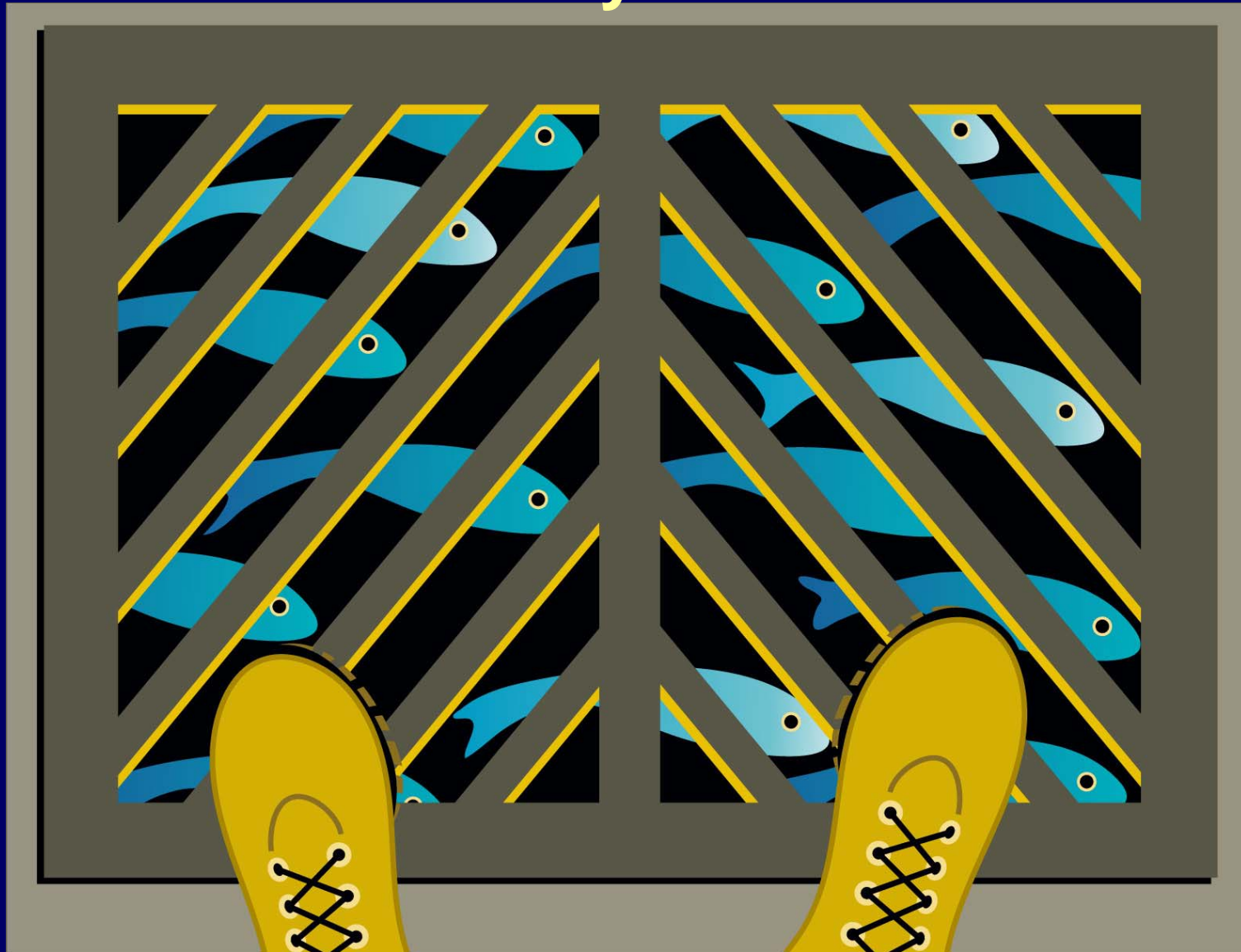
**This water is treated at a wastewater treatment facility.** The solids are removed and the cleaned water is discharged into a nearby water body. Contact your local wastewater treatment facility before disposing of toxic or questionable substances down indoor drains.



**STORMWATER:** Outdoor drains and ditches collect water from hard surfaces like roofs, pavement, and hard-packed ground. This water is piped through the stormwater system and discharged **directly** into water bodies like creeks, streams, and marine waters **without any treatment**.



**Stormwater goes directly into streams  
without any treatment**



# How do vehicle washing and detailing business practices affect stormwater?

If soaps, phosphorus-containing cleaners and degreasers, oil, gas, antifreeze, metals, dirt, road grime, and grease reach waterways, they can cause significant water pollution problems.





# What's the problem?

- Soaps, even biodegradable soaps
- Brake pad dust contains copper
- Fuel, oil, and cleaning chemicals



# Why these things are harmful:

- Some pollutants are deadly to fish and aquatic life
- Soap harms fish
- Metals are toxic to fish
- Oil, fuel, grease, pH, temperature
- Fine sediment particles are pollutants



**What's the solution?**



# Best Management Practices

Pre-clean all oily parts using a reusable rag.



# Best Management Practices

Avoid hose-off degreasers and cleaners.



# **Best Management Practices**

**Make sure your wash water drains to the sewer system.**





# **Best Management Practices**

**You may be required to have an oil/water separator.**



# **Best Management Practices**

**Maintain your oil/water separator.**



# Best Management Practices

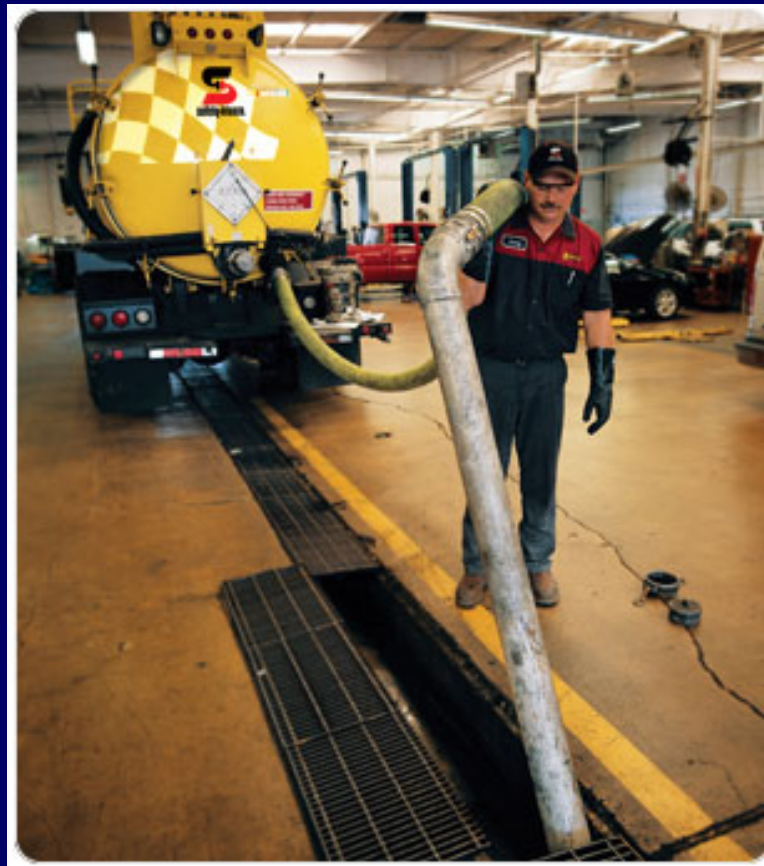
Anything ignitable, reactive, corrosive, or toxic must be disposed of as hazardous waste.





# Best Management Practices

Use a third party hauling business.



# Best Management Practices

Cover and secure the lids to garbage cans.





**Best management practices can be simple!**





# **Best Management Practices:**

**Get to know the drainage on your site.**



# Best Management Practices:

Map your storm drains.





# Best Management Practices:

Good housekeeping goes a long way.





# Best Management Practices: Sweep!



# Best Management Practices: Spill Kits





# Best Management Practices: Clean up spills and drips!





# Best Management Practices:

Keep all cleaners and chemicals in closed, covered, labeled containers.



# Best Management Practices:

Clean up and report spills and leaks.



## **Report spills – it's the law:**

You must the call the **TWO (2)** following 24-hour numbers:

- 1) National Response Center: 1-800-424-8802**
- 2) Washington Emergency Management Division:**  
*(including Emergency Release Notification)*  
**1-800-258-5990 -OR- 1-800-OILS-911**

**Local help can be found at:**

Bellingham Stormwater Hotline 778-7979, or online at [cob.org](http://cob.org) by searching “stormwater”



# Best Management Practices:

Check catch basins under storm drains.





# **Best Management Practices:**

**Block storm drains before starting any outdoor work that might impact stormwater.**



# Best Management Practices: Parking lot maintenance





# Best Management Practices: Waste material storage



# Best Management Practices: Indoor and outdoor storage





# Best Management Practices: Roof drains



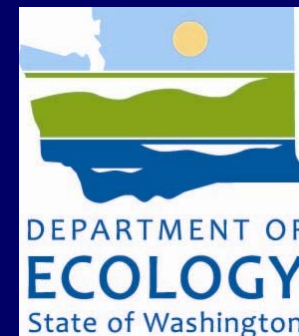


# Best Management Practices: Garbage, etc.



## Additional Resources:

- Department of Ecology's Hazardous Waste Services Directory
- Department of Ecology's Spills Report Hotline
- Bellingham Stormwater Hotline: 778-7979
- Lee First, Pollution Prevention Specialist, RE Sources for Sustainable Communities (360) 733 8307
- Washington Stormwater Center:  
[www.wastormwatercenter.org/](http://www.wastormwatercenter.org/)
- This presentation was created through a collaboration between the following organizations:



## Sponsored by:

Washington Department of Ecology

[www.ecy.wa.gov/programs/wq/stormwater/index.html](http://www.ecy.wa.gov/programs/wq/stormwater/index.html)

City of Bellingham

[www.cob.org/services/environment/stormwater/](http://www.cob.org/services/environment/stormwater/)

## Thanks go to:

RE Sources for Sustainable  
Communities for photography.

Jane Burns for graphics.

