

# BELLINGHAM Water School

## Welcome to the Bellingham Water School home edition!

Use these worksheets, videos, and facts to learn about Bellingham's water systems. Each one of these 5 mini-lessons take about 30-minutes to one hour and should be completed in order. For any questions about Bellingham Water School, Bellingham's three water systems (stormwater, drinking water, and wastewater), or if you want to share about your learning experience, contact us at [waterschool@cob.org](mailto:waterschool@cob.org)

**Fun Fact:** The City of Bellingham's Public Works department manages the City's drinking water, waste water, and stormwater. Buried under the roads of the City lie hundreds of miles of pipes; over 300 miles of drinking water pipes, waste water pipes (used water from your house—think toilet, laundry, dishes, and shower water), and stormwater pipes.

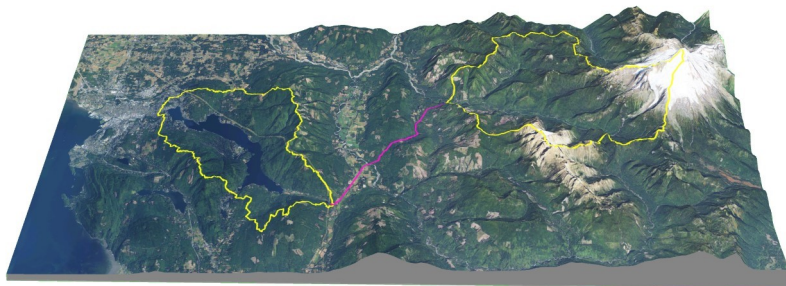
## Lesson 1: Watersheds

Fill out the worksheet on page 2 as you learn about watersheds by completing the following steps:

1. **What is a watershed?** Watch this 1 minute video to help define what a watershed is: <https://www.youtube.com/watch?v=QOrVotzBNto>
2. **Create a watershed model** by following the instructions on this 6 minute video: <https://www.youtube.com/watch?v=HgmQf0WWNMlc> . You'll need a piece of paper, 4 markers, and a spray bottle of water.
3. **Find the name of your watershed** by locating your neighborhood on this Bellingham Watersheds map here: <https://www.cob.org/services/maps/maps/pages/watersheds-map.aspx>



Lake Whatcom, the City of Bellingham's drinking water source



Lake Whatcom gets most of its water from precipitation falling within the watershed boundaries (just like the model you created). There is also a pipe that connects water from the Middle Fork of the Nooksack River to Lake Whatcom to divert water occasionally.

# BELLINGHAM Water School

## Lesson 1: Watersheds

After watching the first video on watersheds and following along with the second video creating your own personal watershed, answer the following questions:

1. The land area that drains into a common body of water is a

---

2. What are three examples of a body of water that has a watershed?

---



---



---

3. What divides watersheds? Why does the water flow towards one body of water vs. another body of water?

---



---

4. What watershed is your school in?

---

5. What watershed do you live in?

---

