



Project site circa 1970

Squalicum Creek Park once included a gravel pit, an airport, and a concrete plant. A century of development throughout the Squalicum Creek watershed resulted in poor water quality and loss of fish and wildlife habitat.

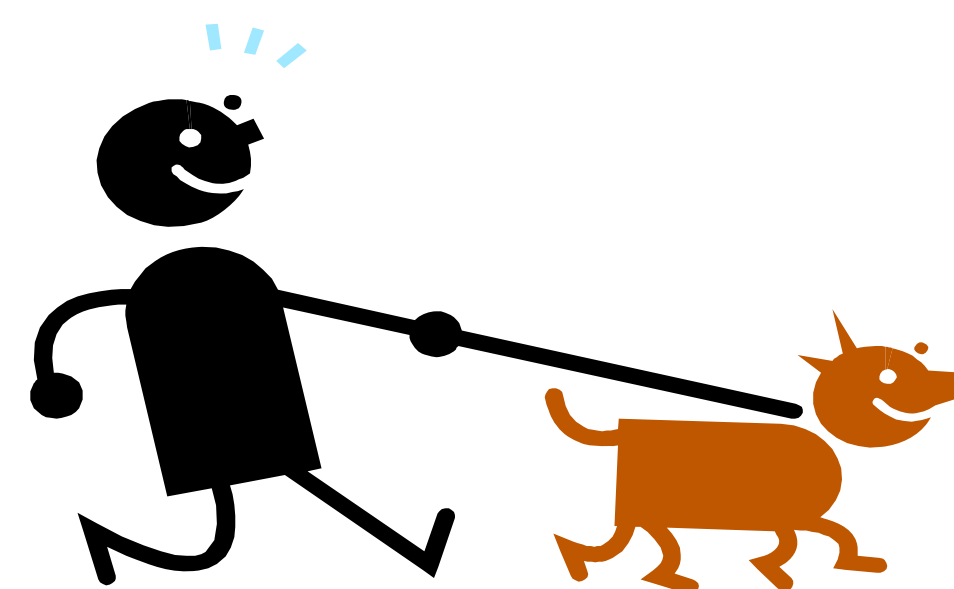


September 2010

The Willow Spring Project increases wildlife habitat by adding key components in productive salmon habitat including daylighting the creek, adding meandering bends, large woody debris, pools, and riffles.

Welcome to Willow Spring at Squalicum Creek Park

For many years, Willow Spring flowed in a pipe underground. *Daylighting* urban streams helps create high-quality fish and wildlife habitat.



Please help to protect this stream habitat by keeping dogs on-leash!

Master Plan for Squalicum Creek Park



Funding for the project was provided by the City of Bellingham and Washington Department of Ecology



Volunteers assist in a planting party

Planting partners for the Willow Spring Project include the Bellingham Parks Volunteer Program, Nooksack Salmon Enhancement Association, Transition Whatcom, REI, and City-sponsored Washington Conservation Corps crews.

You Can Make a Difference!

Whether you live next to a stream or want to volunteer, you can protect salmon habitat in many ways:

You can:

- Plant native trees and shrubs at volunteer events and in your yard.
- Keep people and pets out of streams during fall, winter, and spring salmon-spawning and rearing seasons.
- Stay on designated trails to protect riparian plants that shade and cool the water for young salmon.
- Pick up trash.
- Wash your car on the lawn to prevent soap suds and dirty water from entering creeks through the street storm drains.
- Reduce or eliminate pesticide and herbicide use around your yard.

